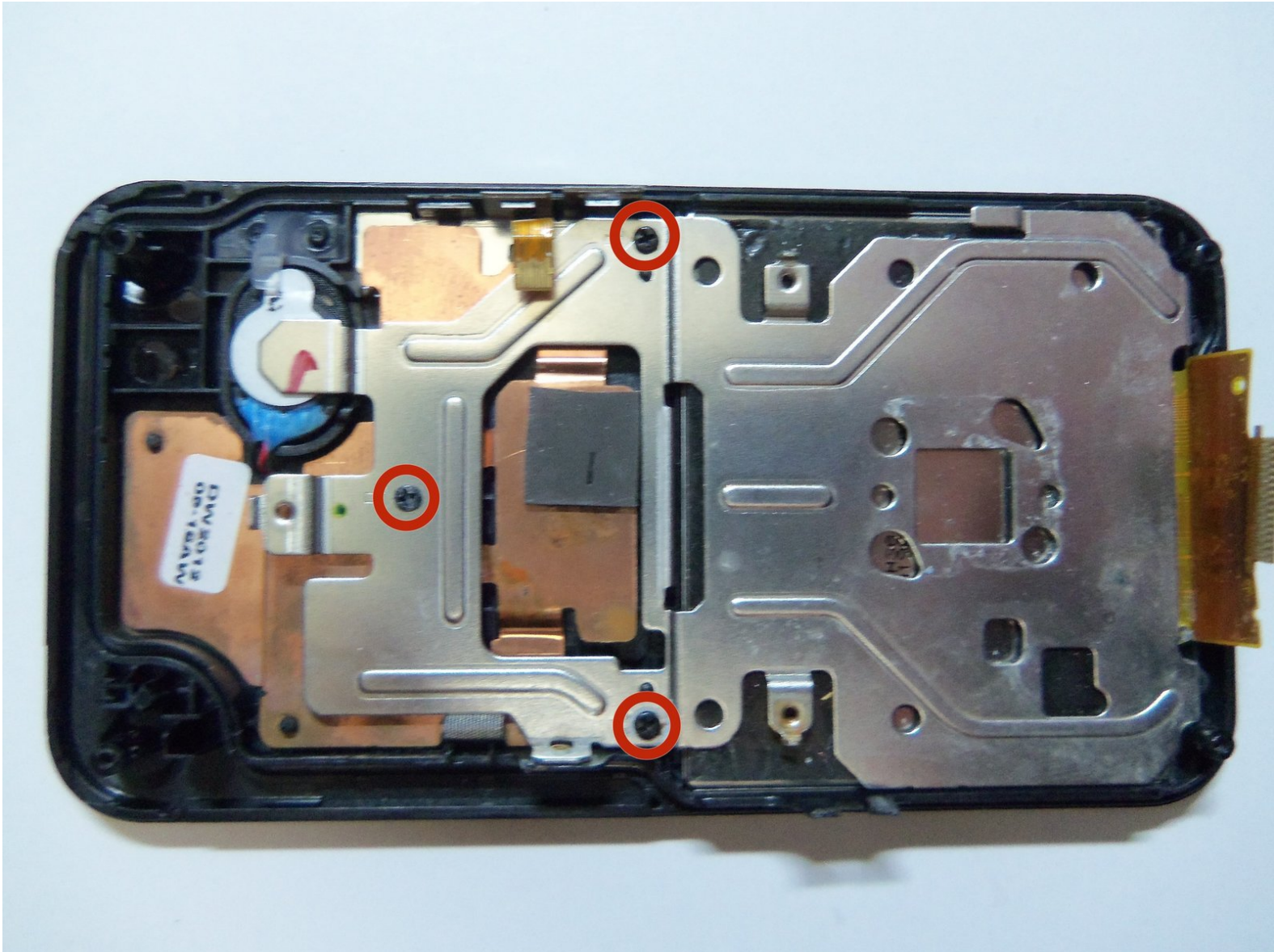




Samsung HMX-W300 LCD Screen Replacement

How to replace the screen.

Written By: Robert



INTRODUCTION

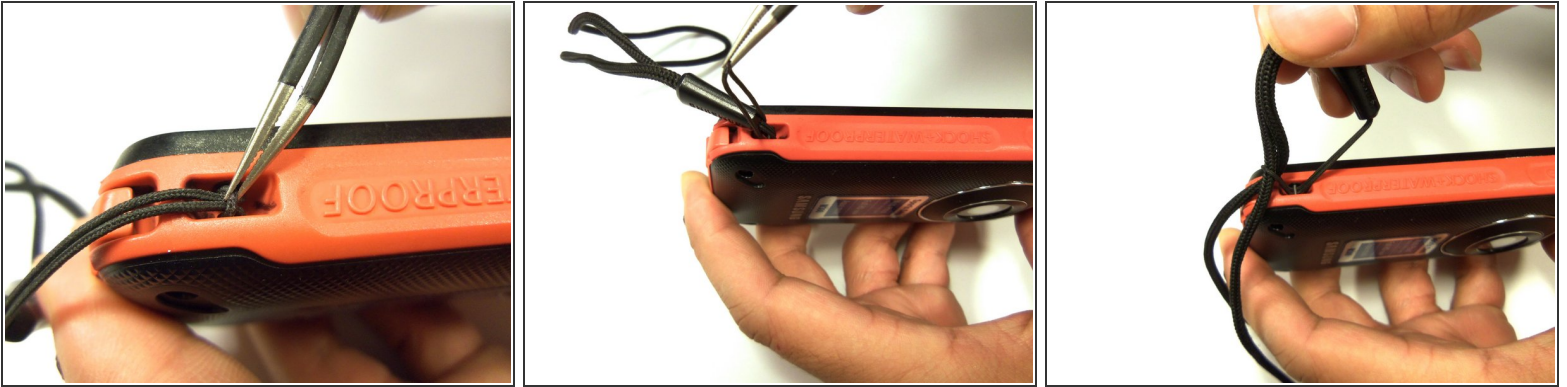
Shows how to place LCD screen of the camera via words and pictures. Replacement of LCD screen requires the removal of motherboard.



TOOLS:

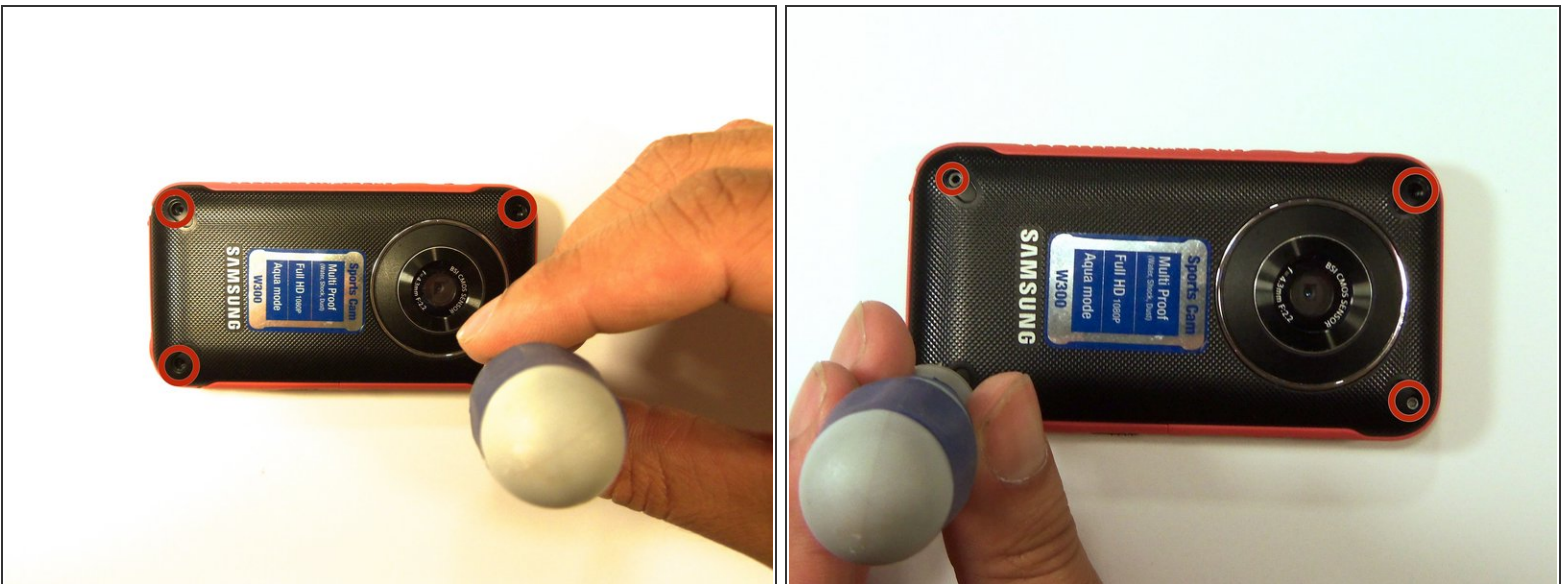
- [1.5mm Hex Screwdriver](#) (1)
 - [Phillips #00 Screwdriver](#) (1)
 - [iFixit Opening Tools](#) (1)
-

Step 1 — Remove wristband



- To remove the wristband of the device, grab the middle loop and pull. Pull the band through as shown in the picture.

Step 2 — Front case screw removal



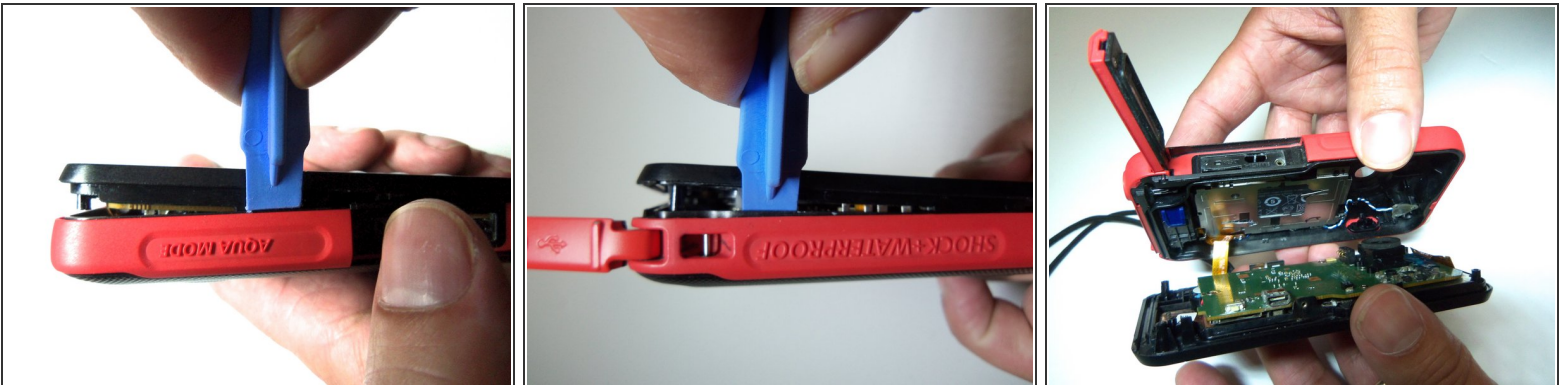
- Remove all four Hex screws with a Hex 1.5 mm screwdriver.

Step 3 — Remove HDMI screw



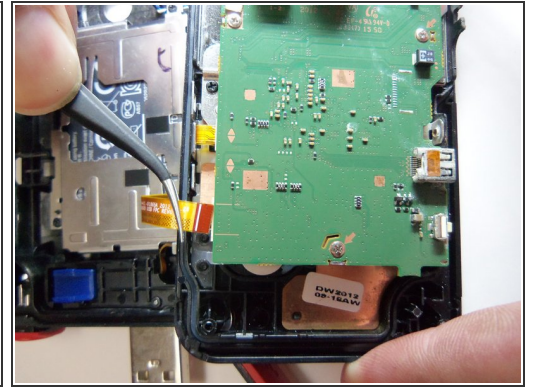
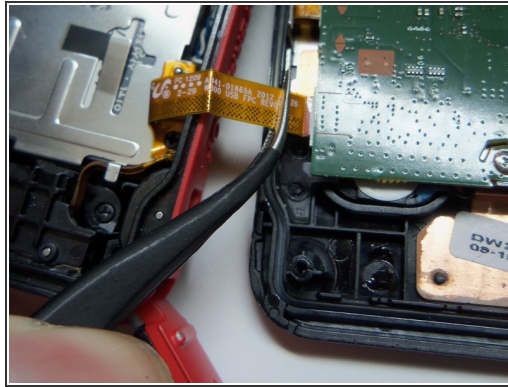
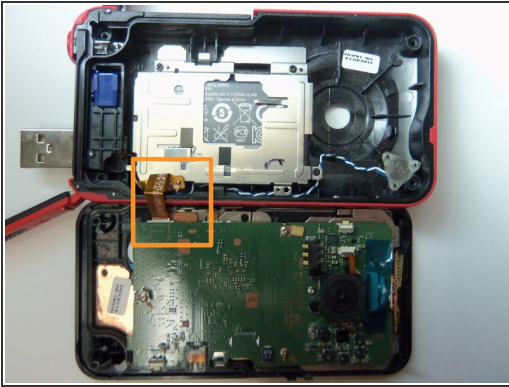
- To remove the HDMI screw, open the HDMI door on the side. Remove the screw using a Phillip size 00.

Step 4 — Open front case.



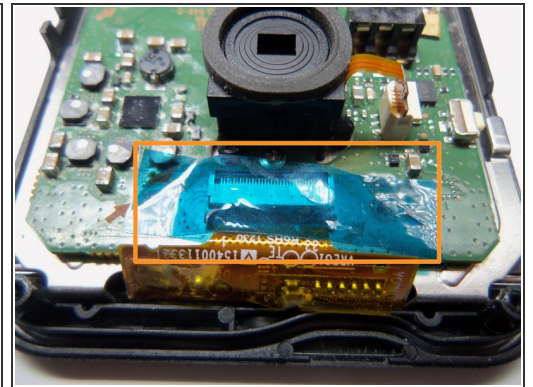
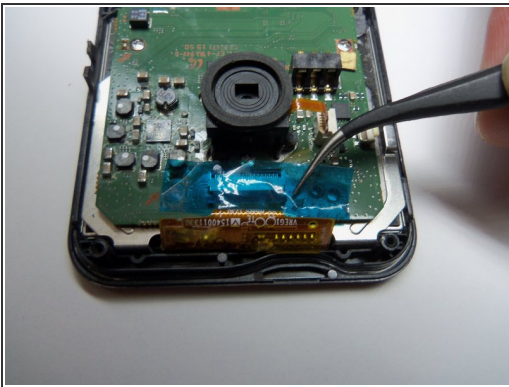
- As shown in the picture, use the plastic opening tool on both sides on the device. Pry apart both parts.
- ⚠ Do not pry apart the device too hard. There is a wire that attaches the front case with the rear case.

Step 5 — Unplug wire.



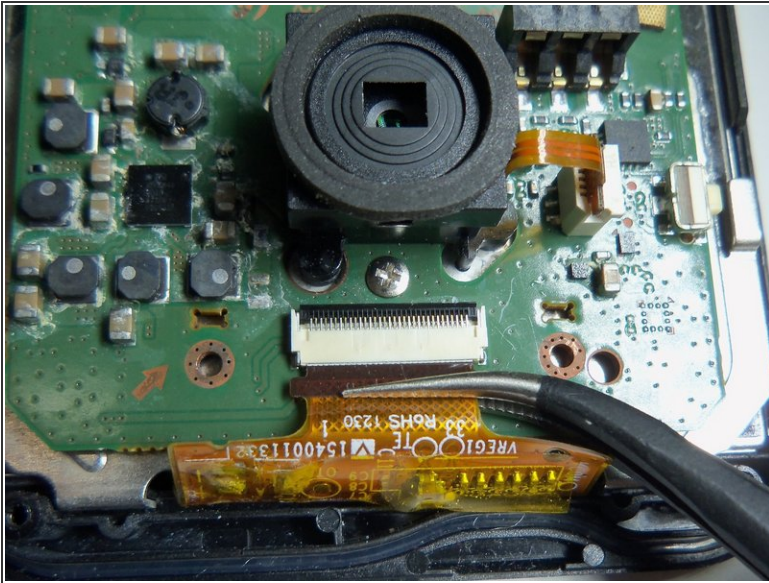
- Pull the wire ribbon out with a pair of tweezers.

Step 6 — Remove tape.



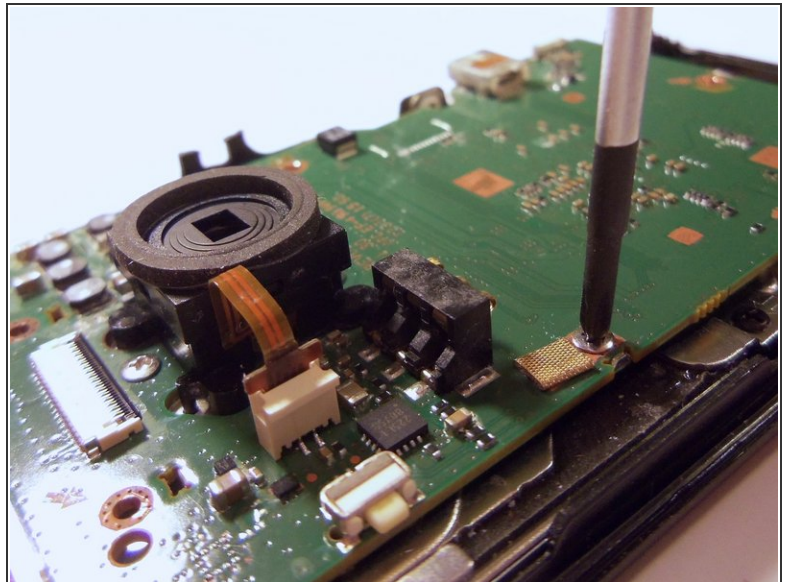
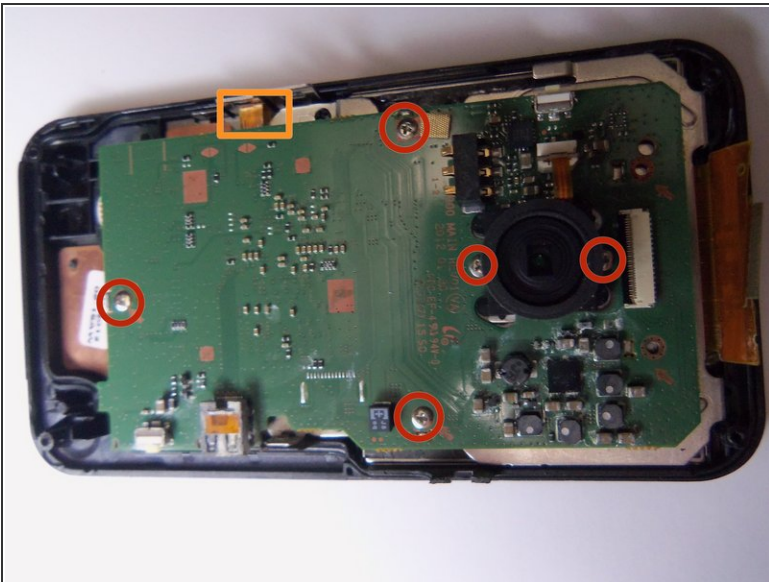
- Use tweezers to remove the tape.

Step 7 — Unplug wire ribbon.



- Use tweezers to grab the wire ribbon, then pull the wire out of connection.

Step 8 — Remove screws.



- There are 5 Phillips size 00 screws. Remove all 5 screws.
- Wire ribbon is attached to the motherboard.

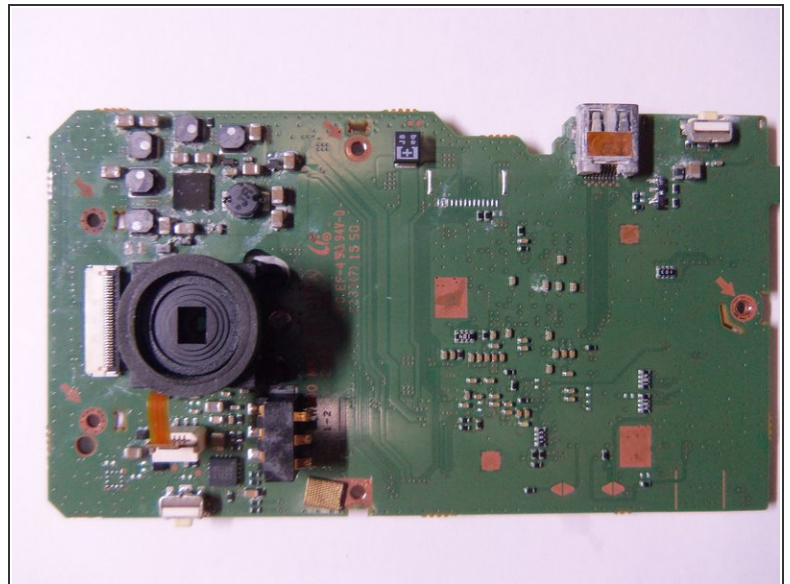
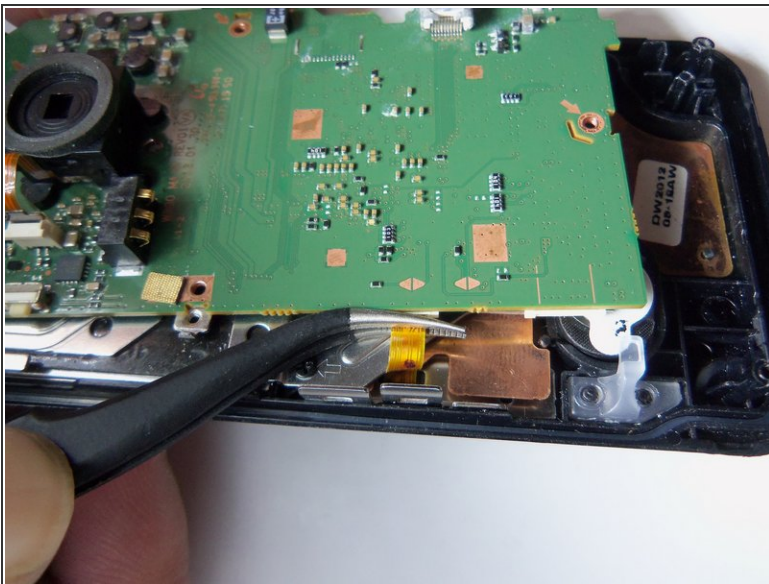
Step 9



- Pry the motherboard up using the plastic opening tool.

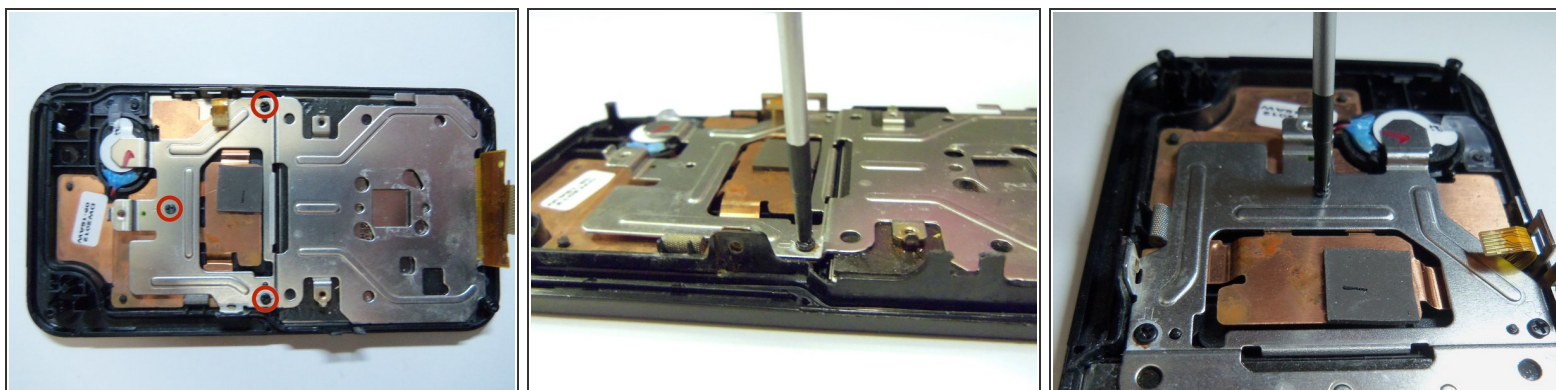
⚠ Be careful there is a wire ribbon holding the motherboard.

Step 10 — Disconnect wire ribbon.



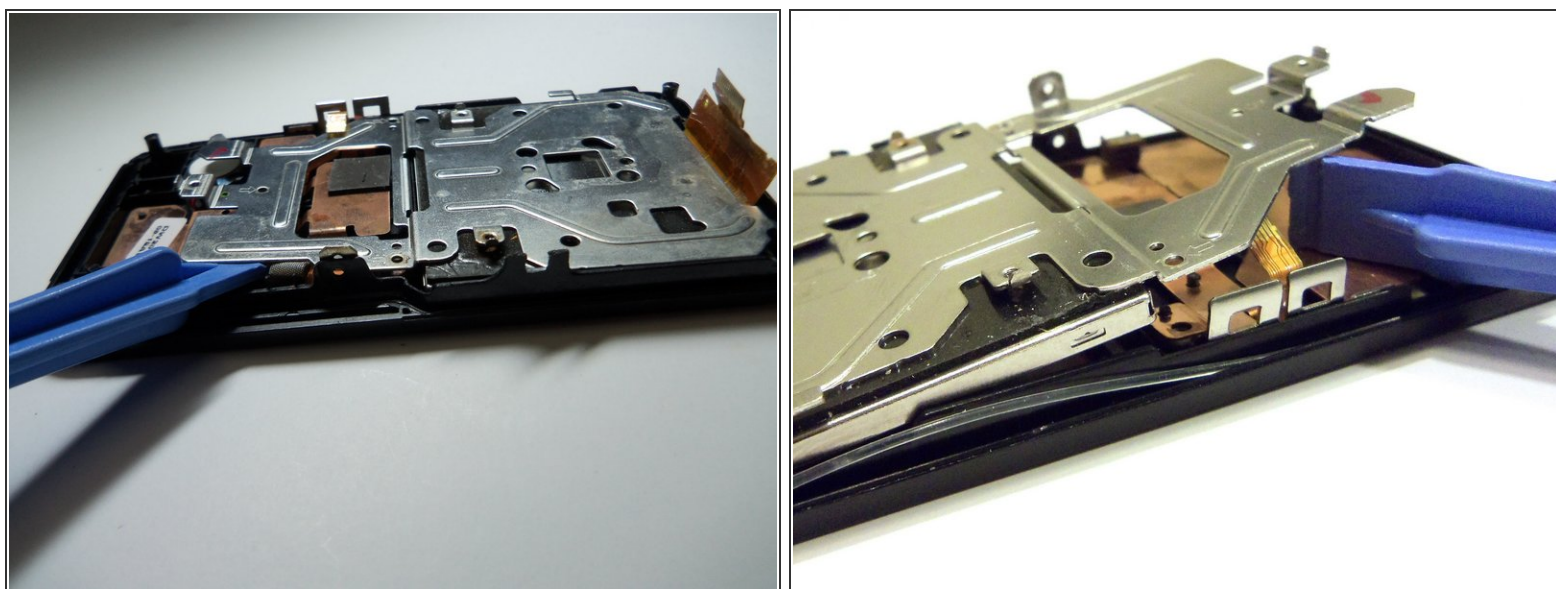
- Use tweezers to disconnect the wire as shown. This will loosen the motherboard from the rear case.

Step 11 — Remove screws.



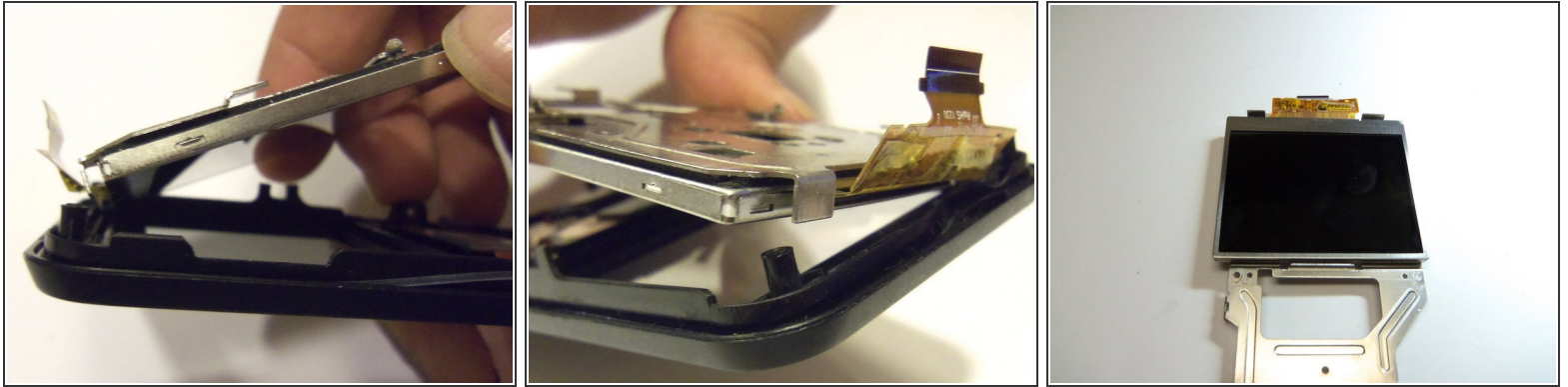
- Use Phillips size 00 and remove the 3 screws as shown.

Step 12 — Pry screen.



- Pry the end of the screen with the plastic opening tool.

Step 13



- Grab the end of the screen, then pull towards the inside of the case. This is a bit tricky. This will release tabs at the top of the screen to the rear case.

To reassemble your device, follow these instructions in reverse order.