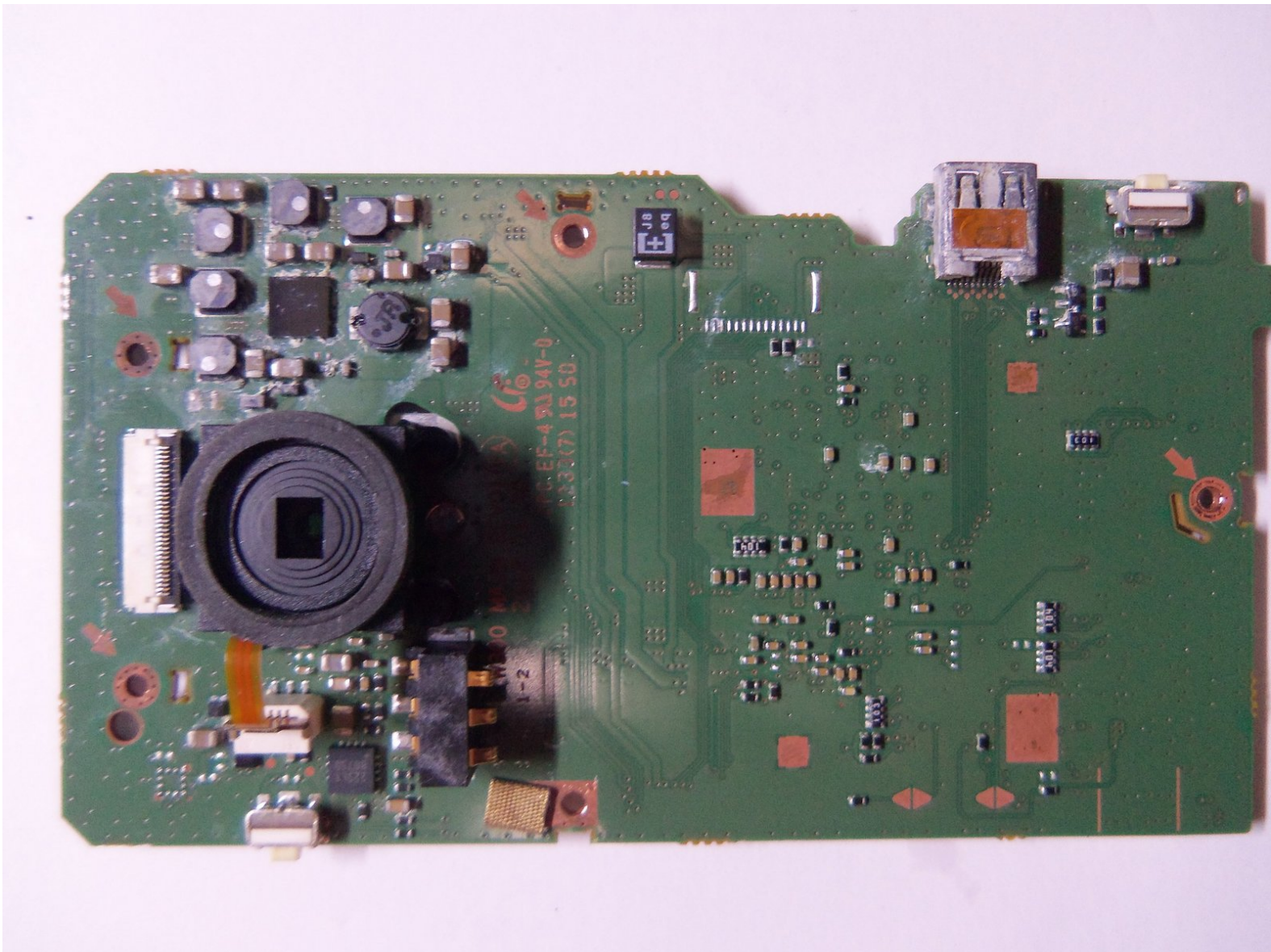




Samsung HMX-W300 Lens Replacement

How to replace the lens.

Written By: Robert



INTRODUCTION

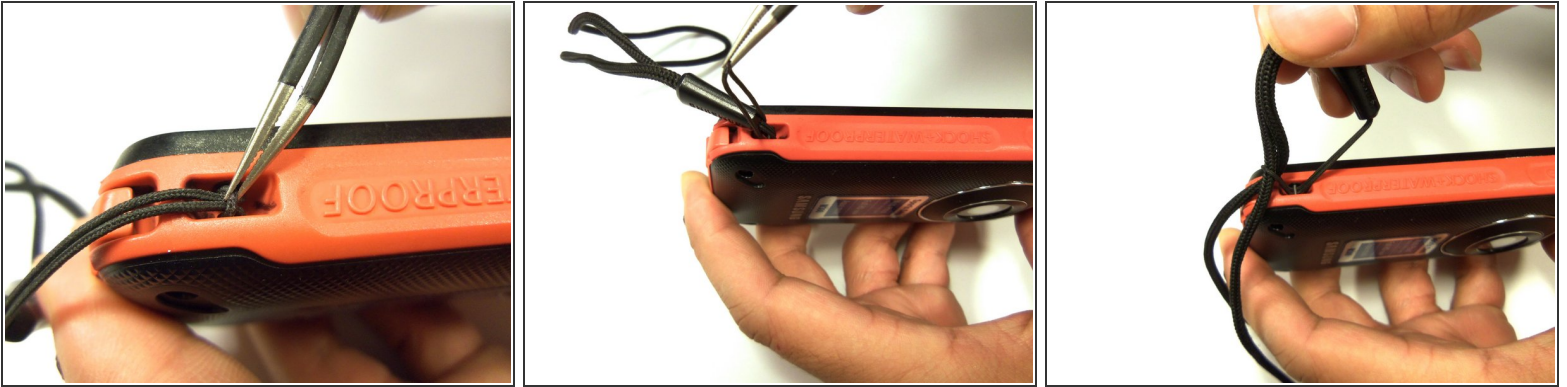
Shows how to replace the lens through pictures and words. The lens is located on the motherboard and requires tweezers to unplug ribbons and the remove motherboard from the rear case.



TOOLS:

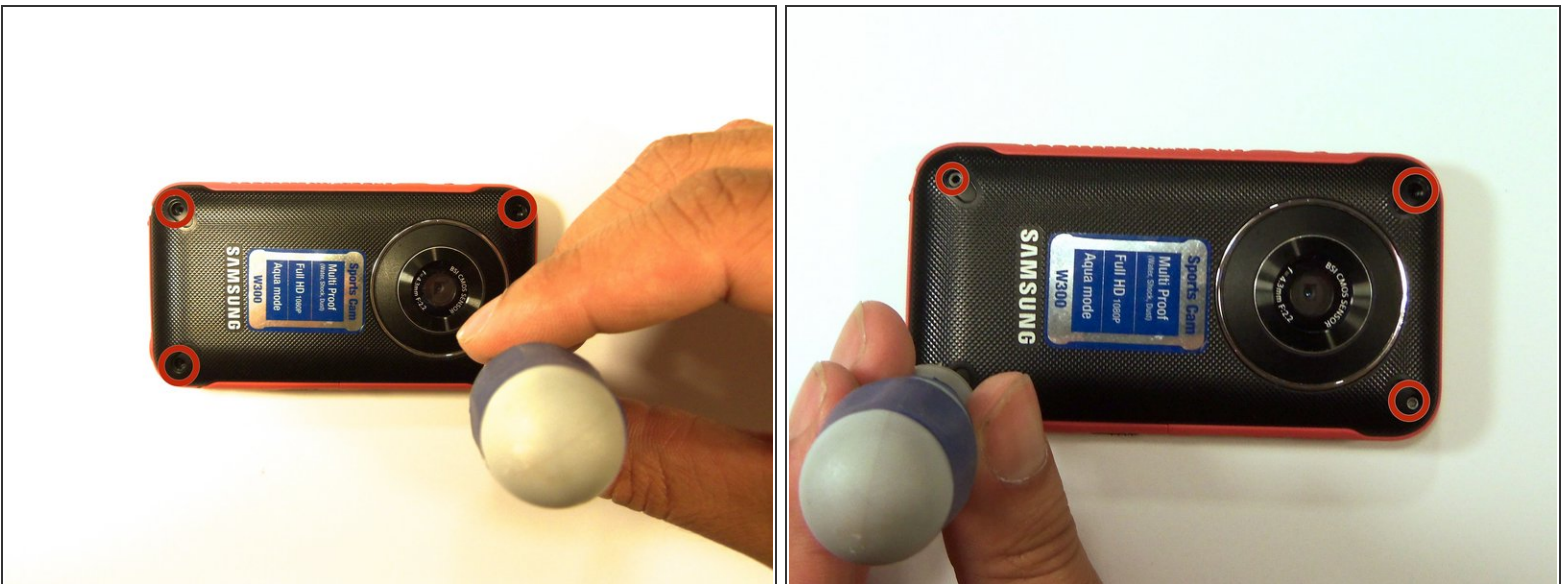
- [1.5mm Hex Screwdriver](#) (1)
 - [Phillips #00 Screwdriver](#) (1)
 - [iFixit Opening Tools](#) (1)
-

Step 1 — Remove wristband



- To remove the wristband of the device, grab the middle loop and pull. Pull the band through as shown in the picture.

Step 2 — Front case screw removal



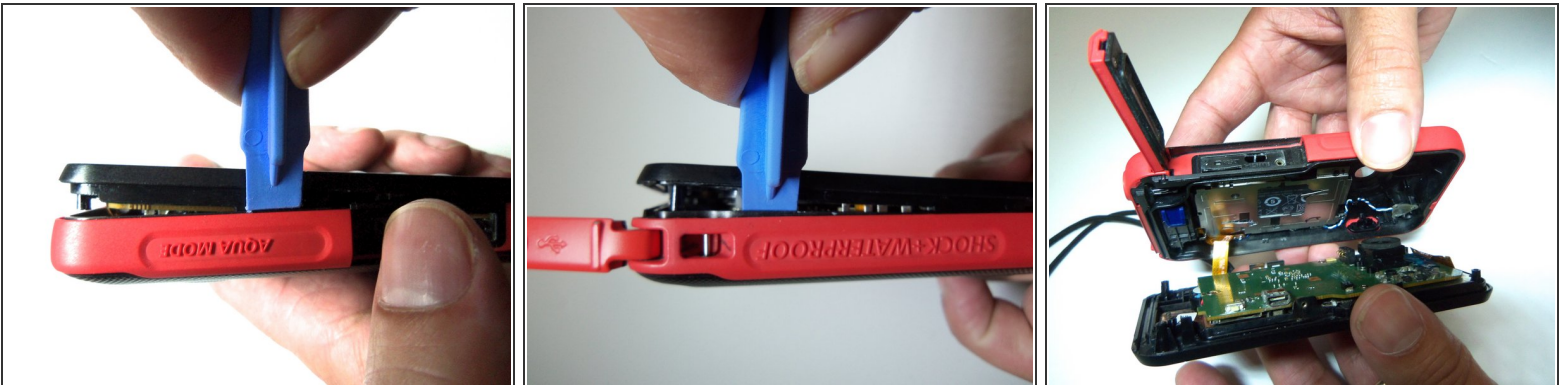
- Remove all four Hex screws with a Hex 1.5 mm screwdriver.

Step 3 — Remove HDMI screw



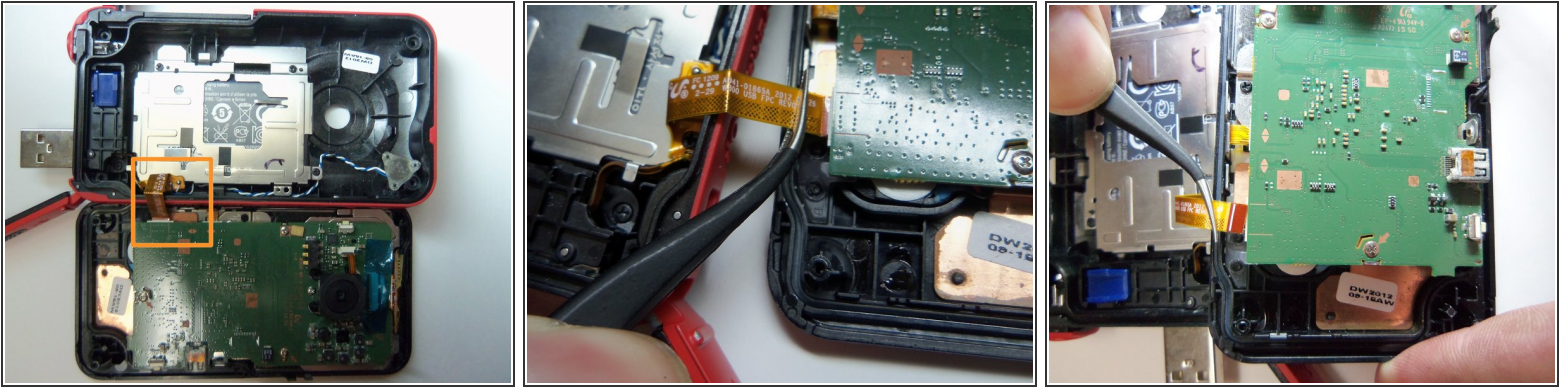
- To remove the HDMI screw, open the HDMI door on the side. Remove the screw using a Phillip size 00.

Step 4 — Open front case.



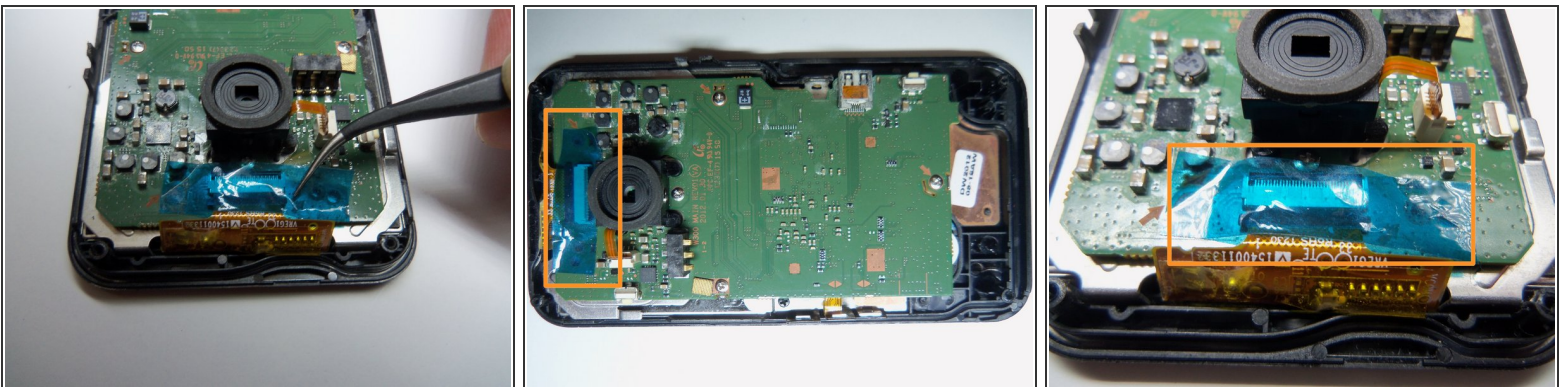
- As shown in the picture, use the plastic opening tool on both sides on the device. Pry apart both parts.
- ⚠ Do not pry apart the device too hard. There is a wire that attaches the front case with the rear case.

Step 5 — Unplug wire.



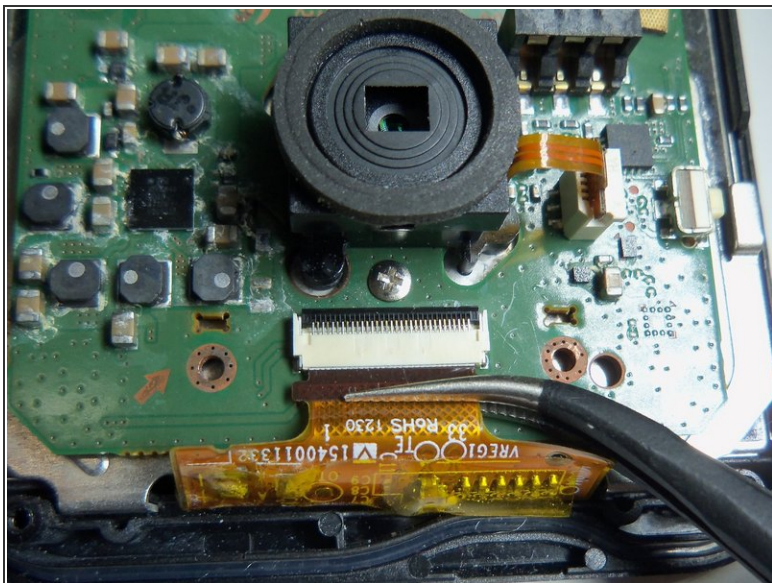
- Pull the wire ribbon out with a pair of tweezers.

Step 6 — Remove tape.



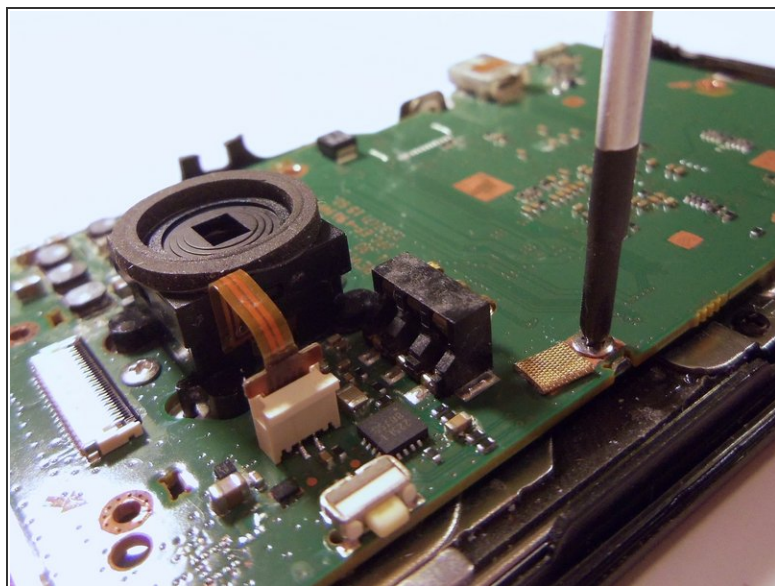
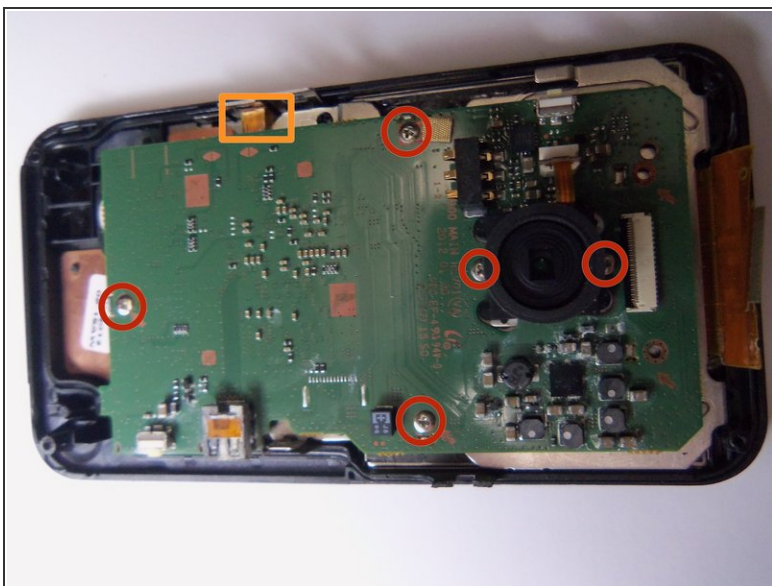
- Use tweezers to remove the tape.

Step 7 — Unplug wire ribbon.



- Use tweezers to grab the wire ribbon, then pull the wire out of connection.

Step 8 — Remove screws.



- There are 5 Phillips size 00 screws. Remove all 5 screws.
- Wire ribbon is attached to the motherboard.

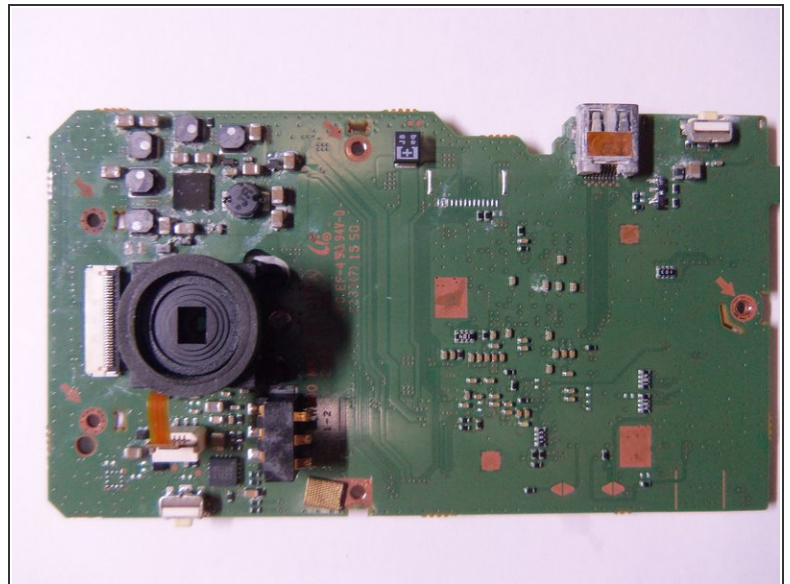
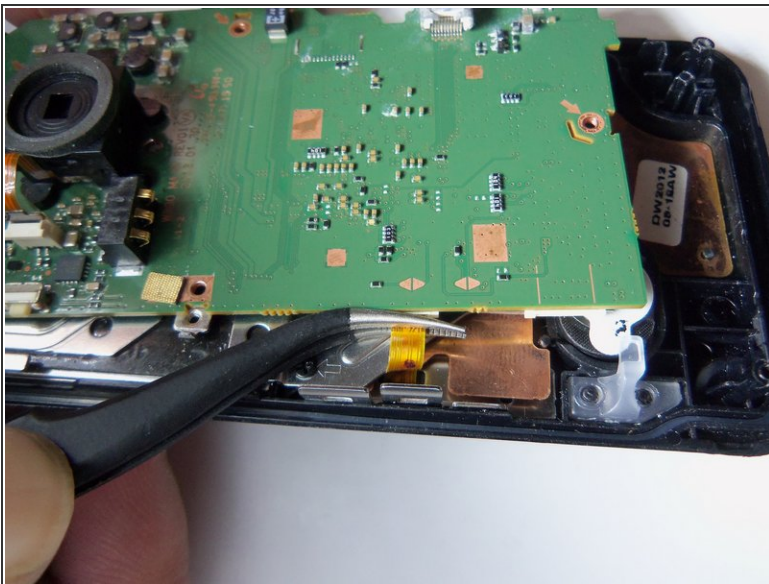
Step 9



- Pry the motherboard up using the plastic opening tool.

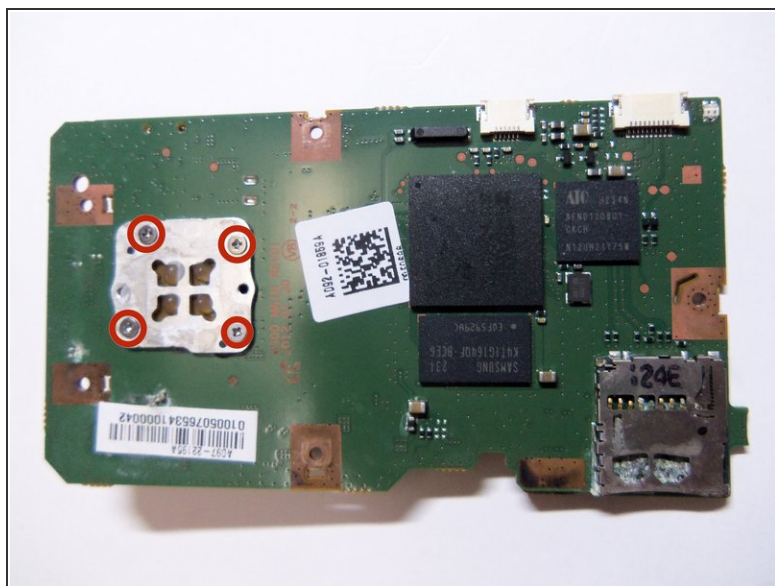
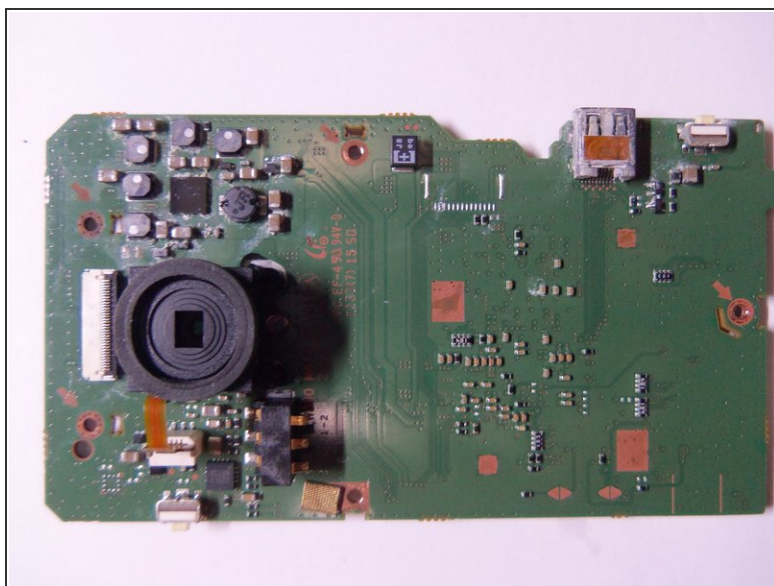
⚠ Be careful there is a wire ribbon holding the motherboard.

Step 10 — Disconnect wire ribbon.



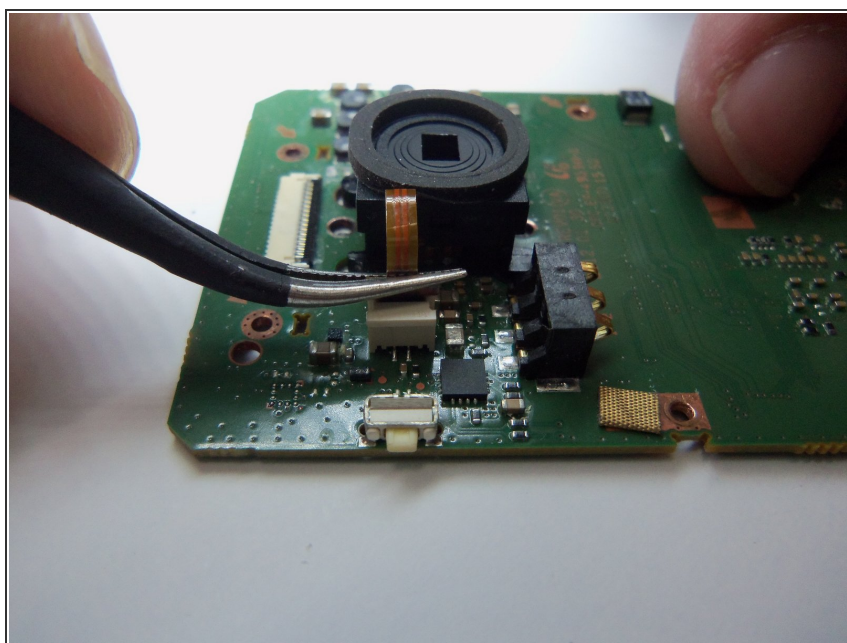
- Use tweezers to disconnect the wire as shown. This will loosen the motherboard from the rear case.

Step 11 — Lens screws



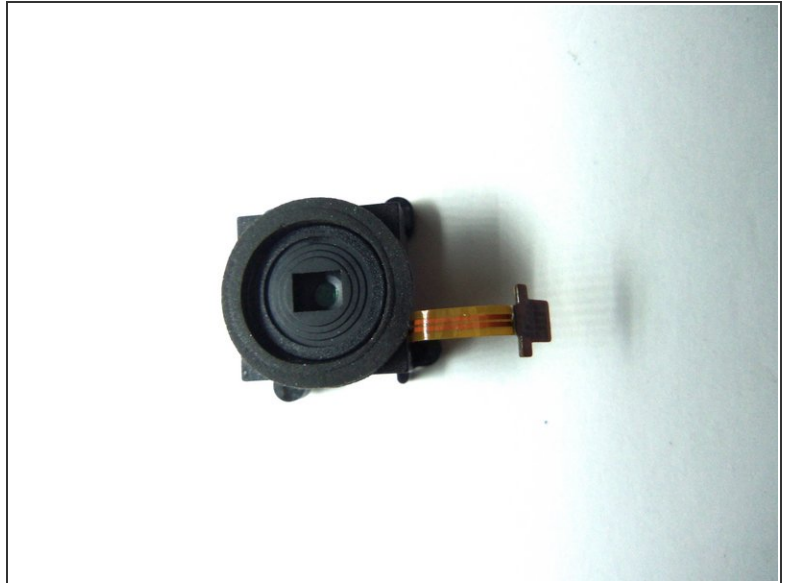
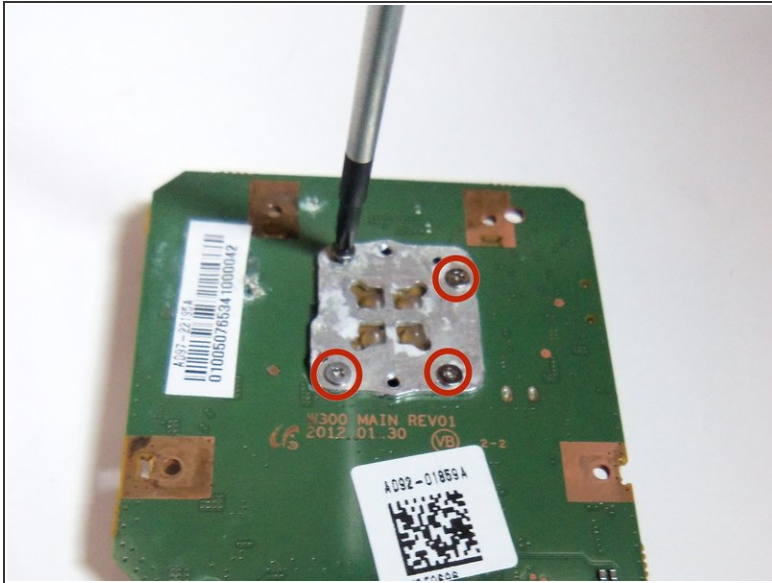
- Shows front of motherboard and rear of motherboard.
- Lens has 4 Phillips size 00 screws.

Step 12 — Remove wire ribbon



- Unplug the wire ribbon from the motherboard.

Step 13 — Remove lens screws



- Remove all 4 PH(00) screws, this will loosen the lens from the motherboard.

To reassemble your device, follow these instructions in reverse order.