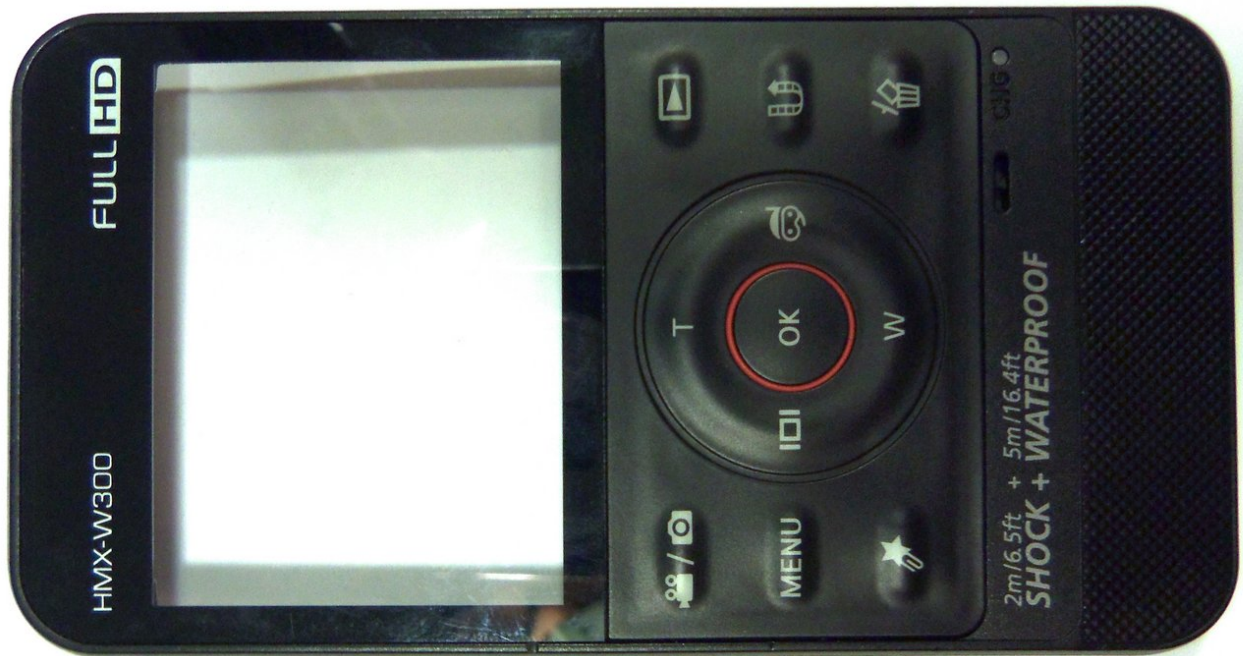




Samsung HMX-W300 Rear Case Replacement

How to replace the rear case.

Written By: Robert



INTRODUCTION

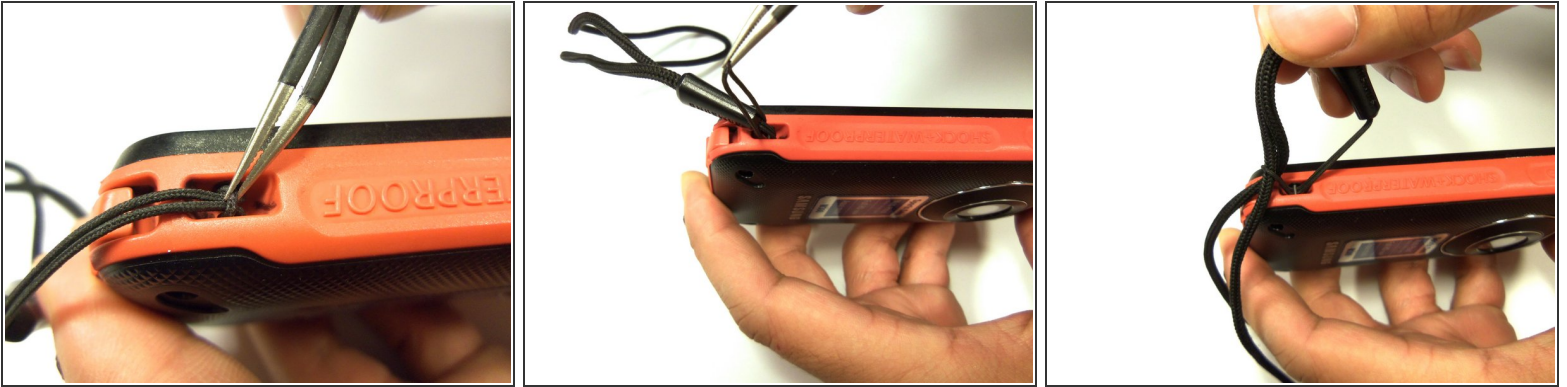
Demonstrates how to replace the rear case of the camera through instructive pictures and words. Replacement of rear case requires the removal of the motherboard and LCD screen.



TOOLS:

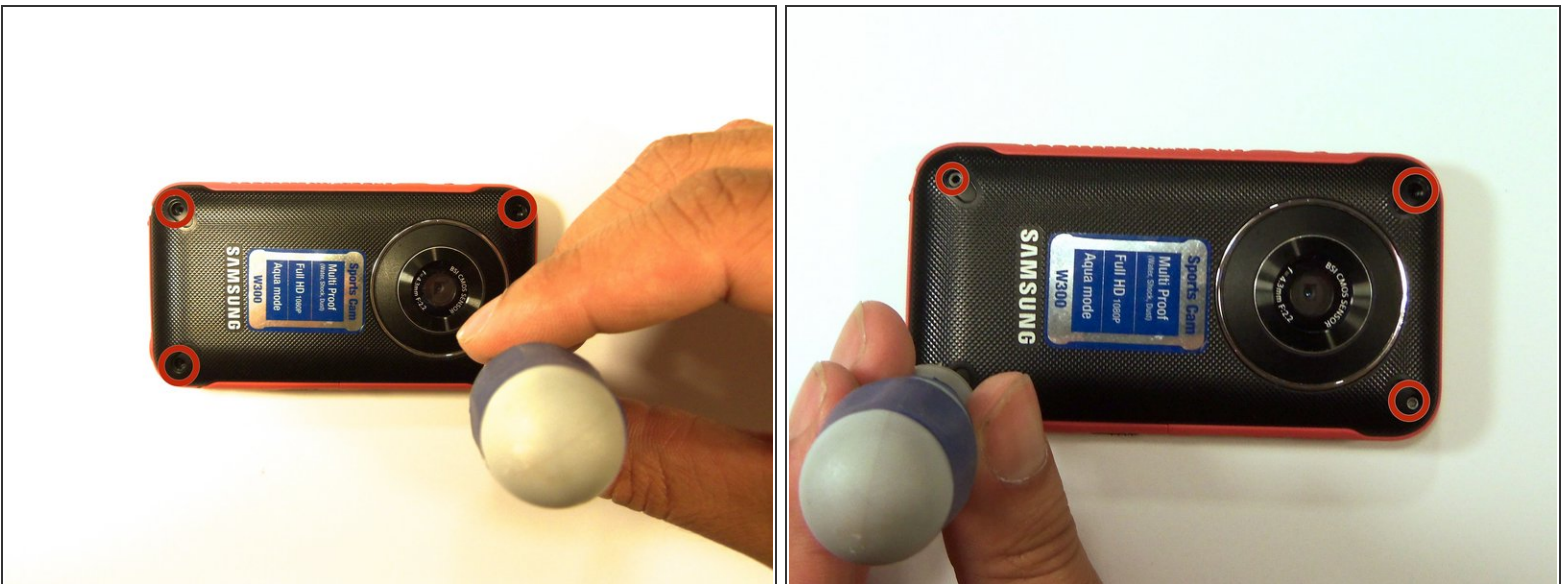
- [1.5mm Hex Screwdriver](#) (1)
 - [Phillips #00 Screwdriver](#) (1)
 - [iFixit Opening Tools](#) (1)
-

Step 1 — Remove wristband



- To remove the wristband of the device, grab the middle loop and pull. Pull the band through as shown in the picture.

Step 2 — Front case screw removal



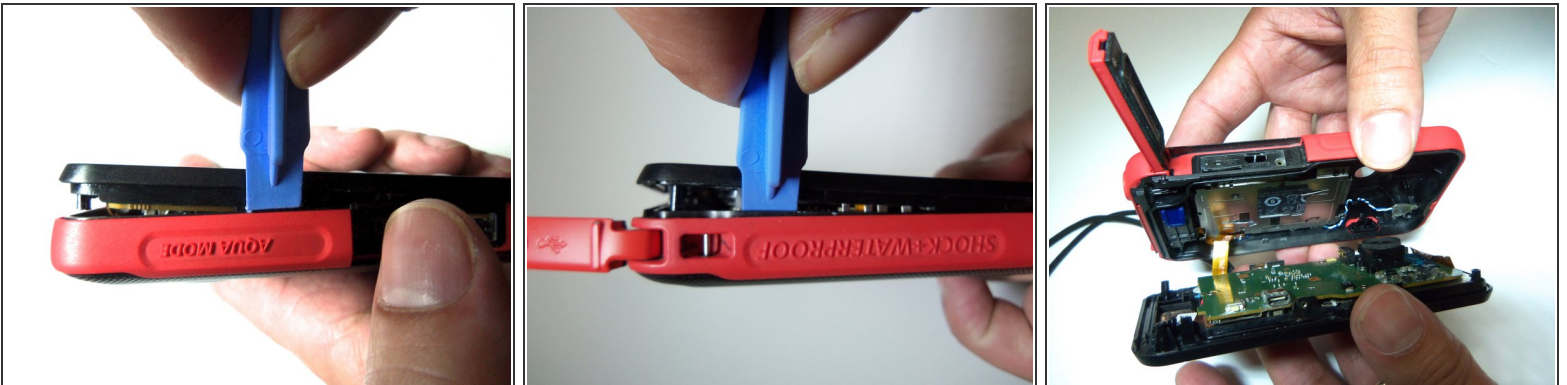
- Remove all four Hex screws with a Hex 1.5 mm screwdriver.

Step 3 — Remove HDMI screw



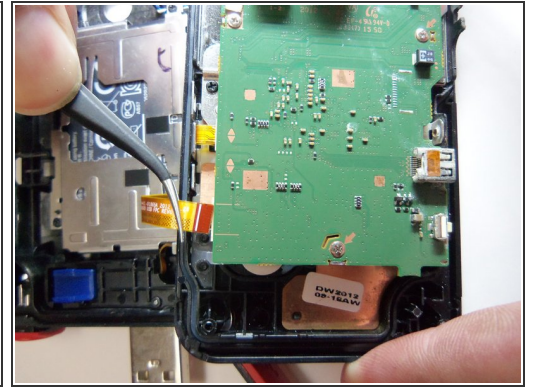
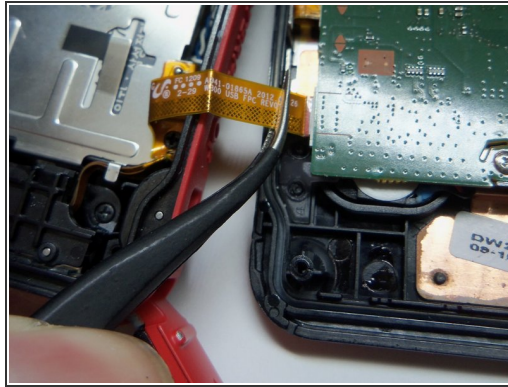
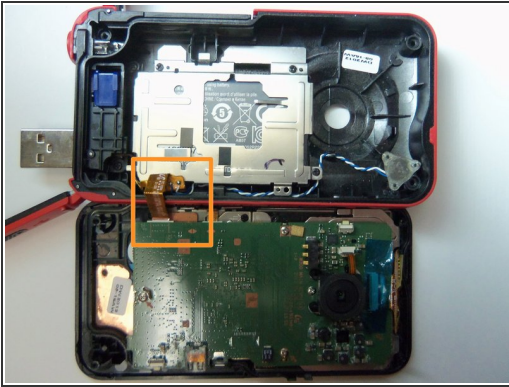
- To remove the HDMI screw, open the HDMI door on the side. Remove the screw using a Phillip size 00.

Step 4 — Open front case.



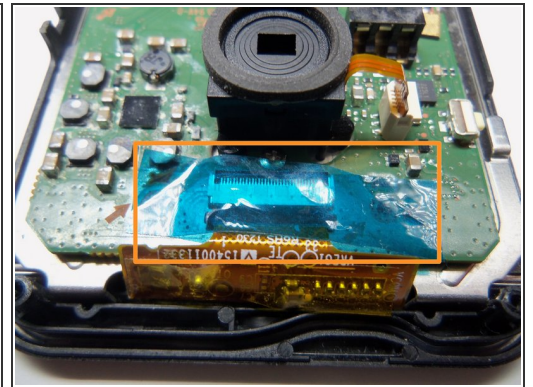
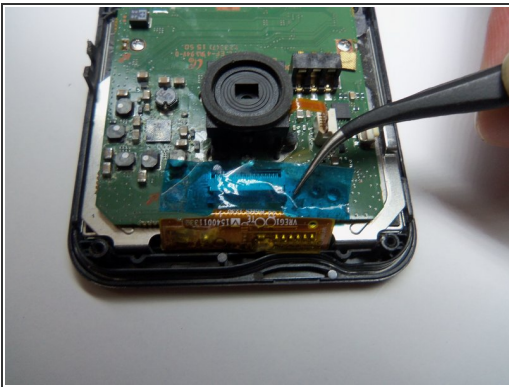
- As shown in the picture, use the plastic opening tool on both sides on the device. Pry apart both parts.
- ⚠ Do not pry apart the device too hard. There is a wire that attaches the front case with the rear case.

Step 5 — Unplug wire.



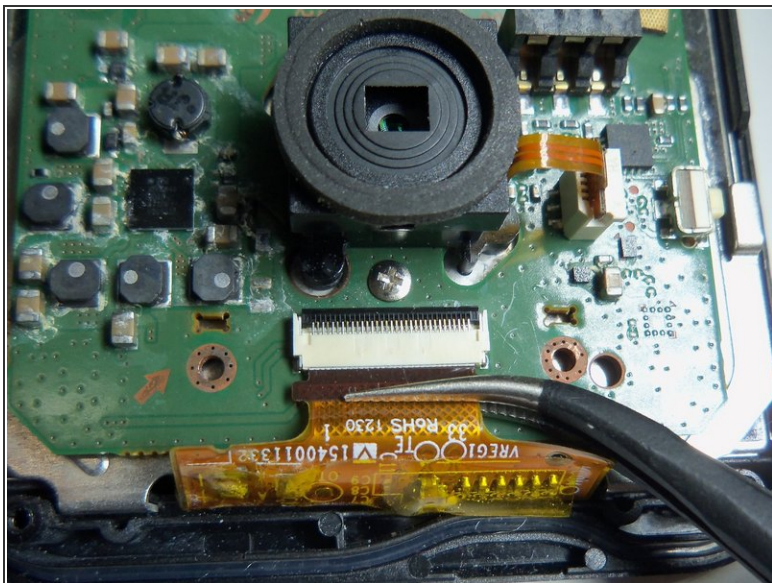
- Pull the wire ribbon out with a pair of tweezers.

Step 6 — Remove tape.



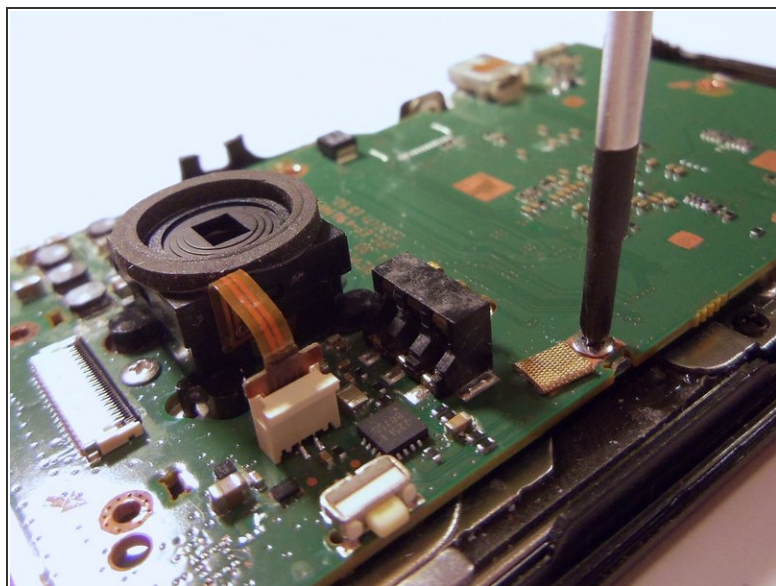
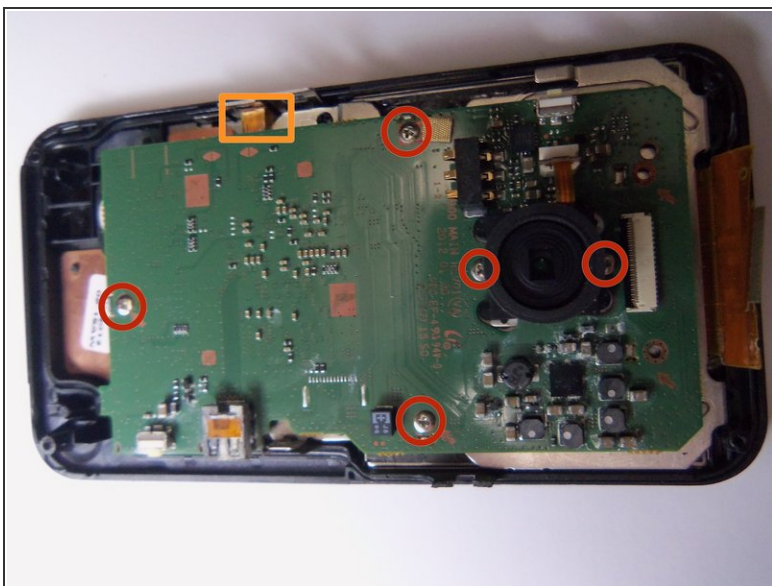
- Use tweezers to remove the tape.

Step 7 — Unplug wire ribbon.



- Use tweezers to grab the wire ribbon, then pull the wire out of connection.

Step 8 — Remove screws.



- There are 5 Phillips size 00 screws. Remove all 5 screws.
- Wire ribbon is attached to the motherboard.

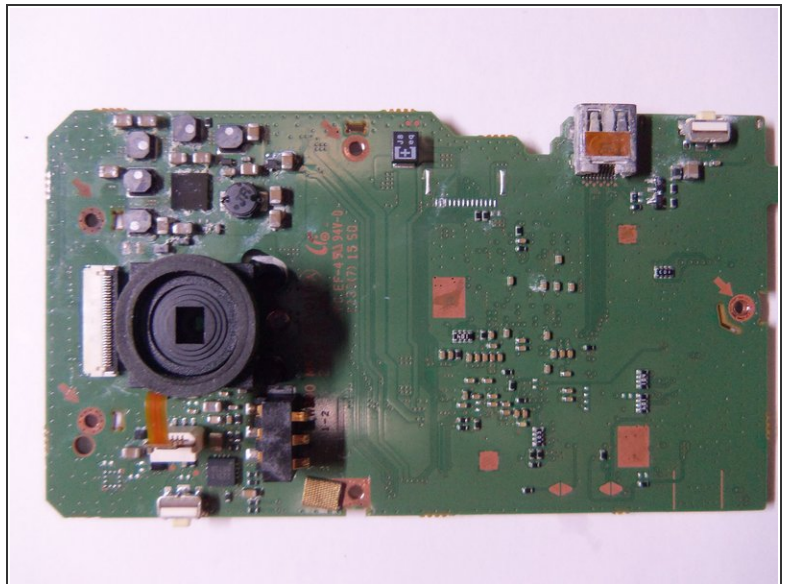
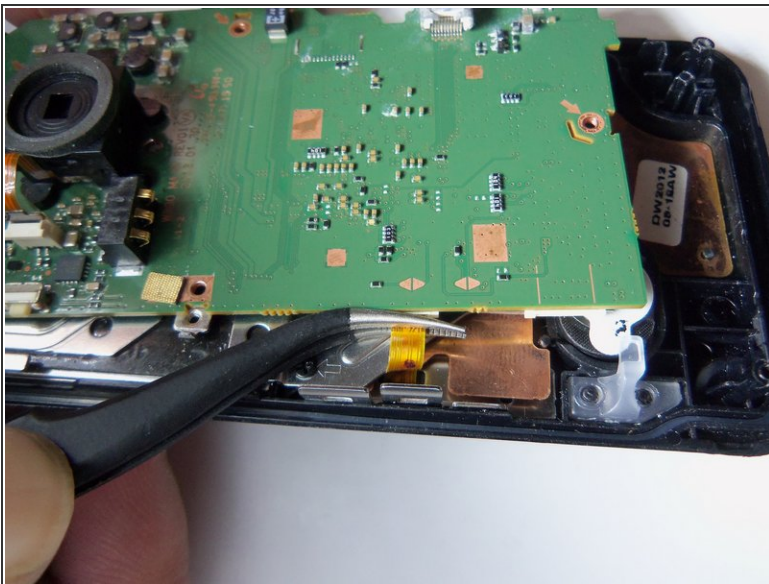
Step 9



- Pry the motherboard up using the plastic opening tool.

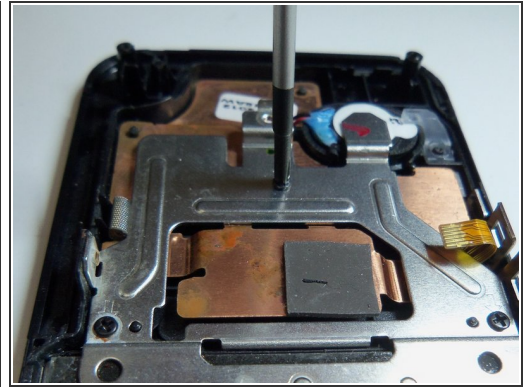
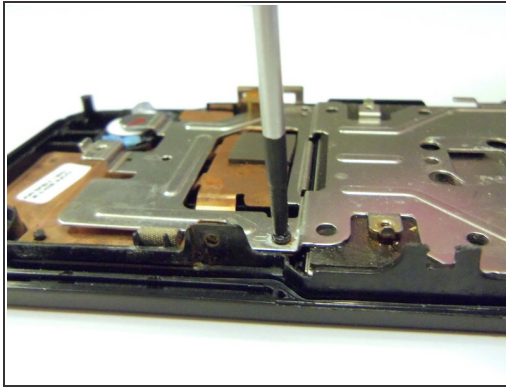
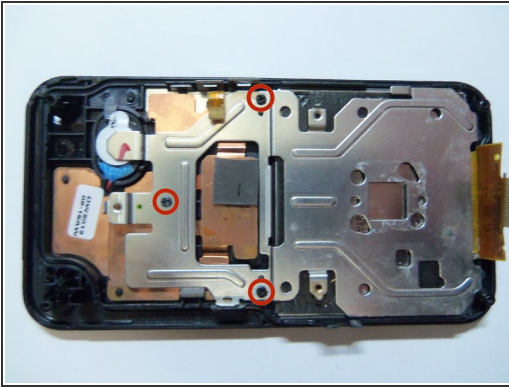
⚠ Be careful there is a wire ribbon holding the motherboard.

Step 10 — Disconnect wire ribbon.



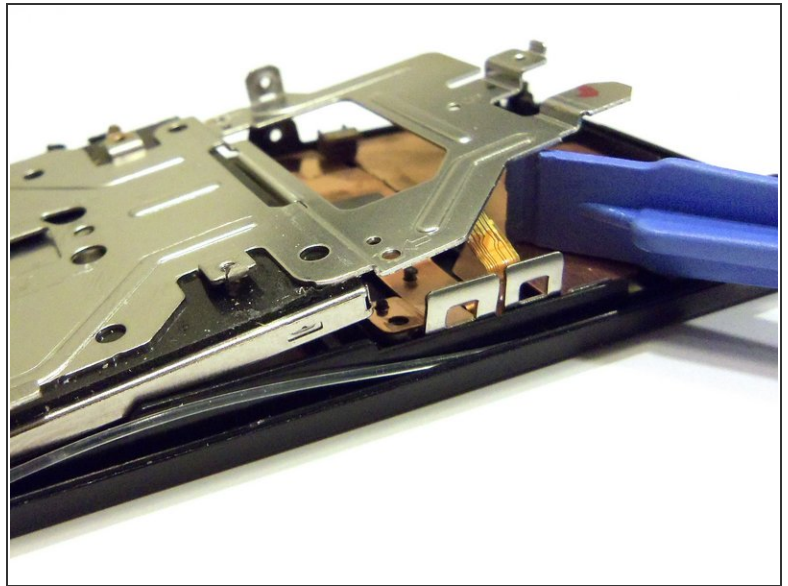
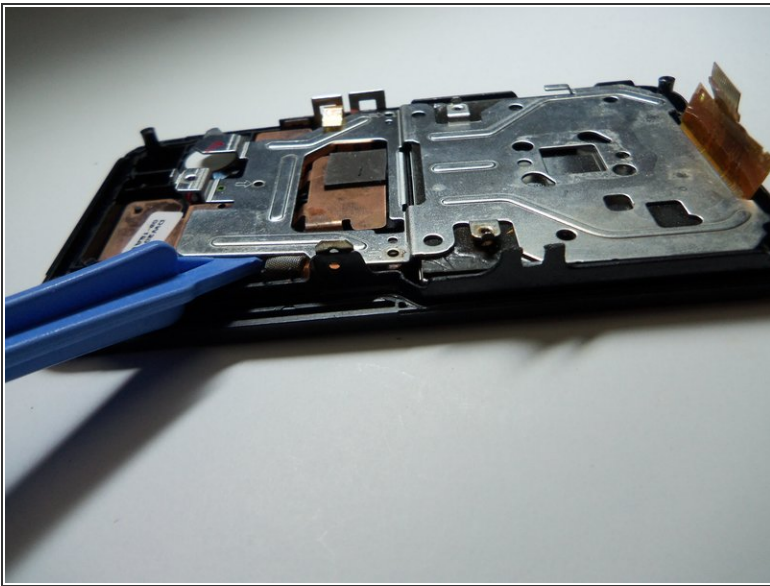
- Use tweezers to disconnect the wire as shown. This will loosen the motherboard from the rear case.

Step 11 — Remove screws.



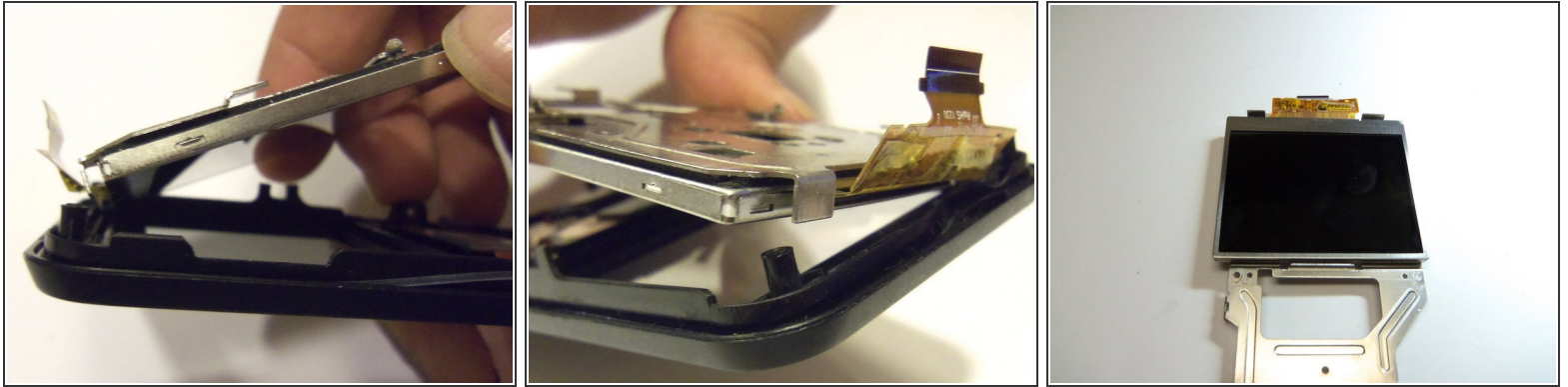
- Use Phillips size 00 and remove the 3 screws as shown.

Step 12 — Pry screen.



- Pry the end of the screen with the plastic opening tool.

Step 13



- Grab the end of the screen, then pull towards the inside of the case. This is a bit tricky. This will release tabs at the top of the screen to the rear case.

Step 14 — Repalce rear case



- Removal of the rear case is completed.

To reassemble your device, follow these instructions in reverse order.