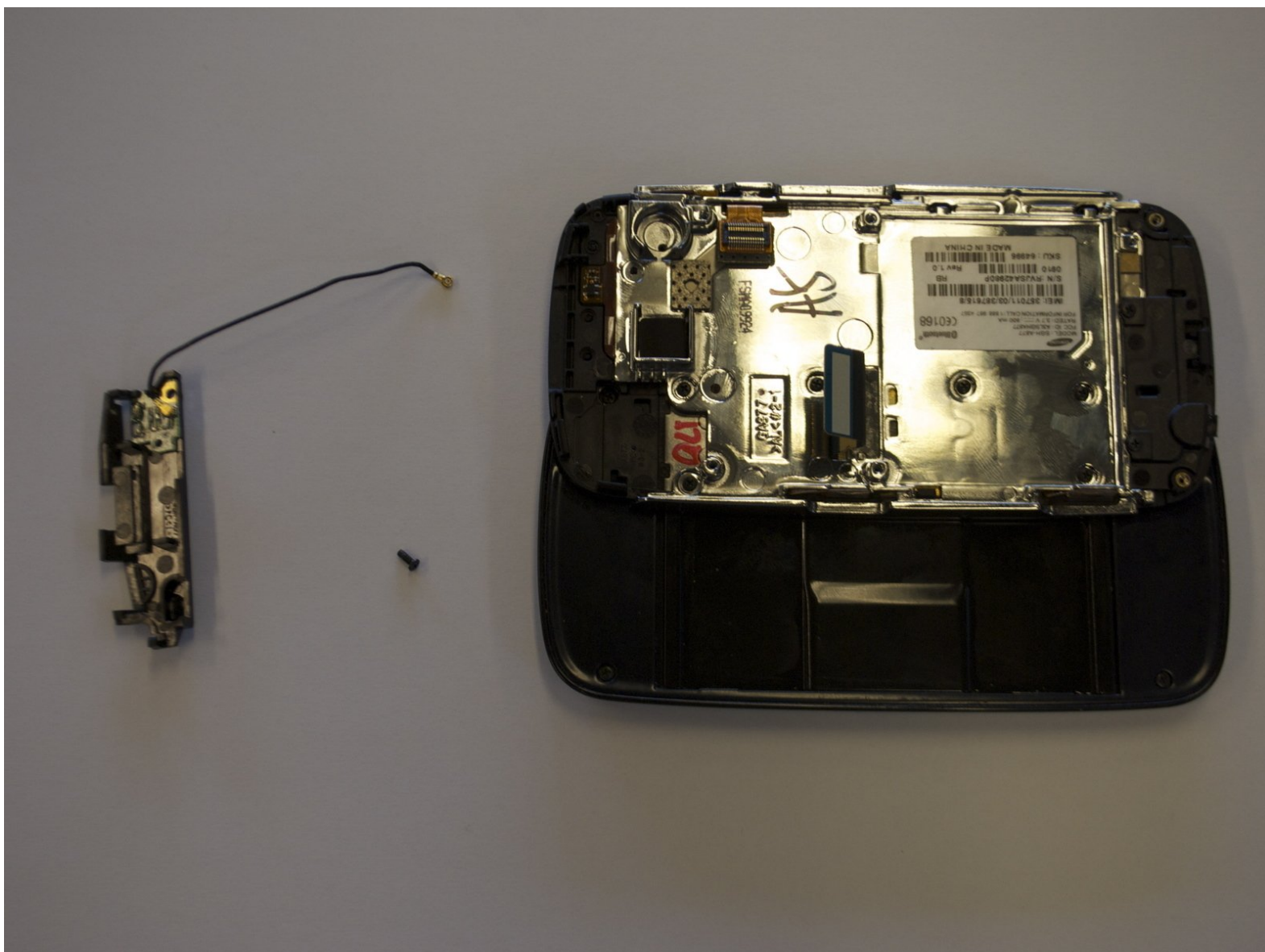




Samsung Impression Antenna Replacement

How to remove & replace the phone's antenna.

Written By: Saul Villatoro



INTRODUCTION

How to remove & replace the phone's antenna.



TOOLS:

- [Phillips #0 Screwdriver](#) (1)
-

Step 1 — Battery



- Orient the phone with the screen facing down.
- Using your thumb, slide the back panel away from the camera to expose the battery.

Step 2



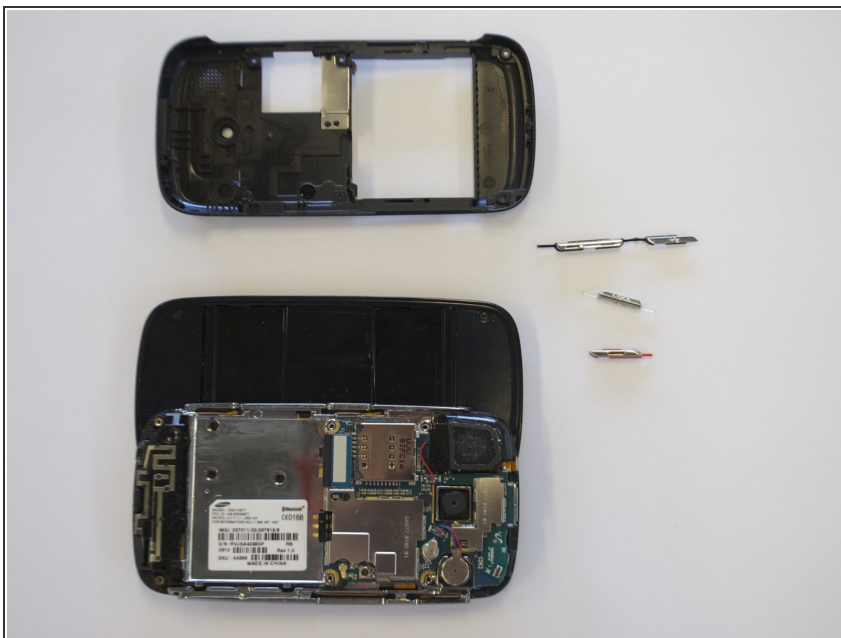
- Grip the battery on its sides, opposite the direction of the white arrow.
- Pry the battery up. It will pivot at the end with the white arrow. The battery will now be free.

Step 3 — Back Cover



- Remove the 6 outer screws.
 - The screws should be 3.5 mm in length.
- ⚠ Put the screws in a safe place as they are very small and easy to lose.

Step 4



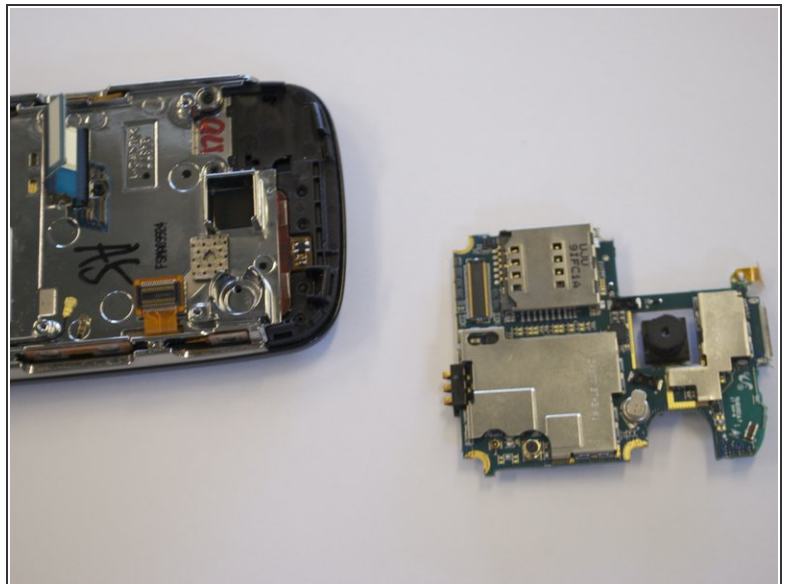
- Snap off back the cover by gently prying around the top and bottom edges with a flat head screwdriver.
 - ⓘ It may help to slide the touchscreen upwards when removing the back panel.
- The side buttons will become loose and are prone to fall out, so put these in a safe place.

Step 5 — Circuit Board



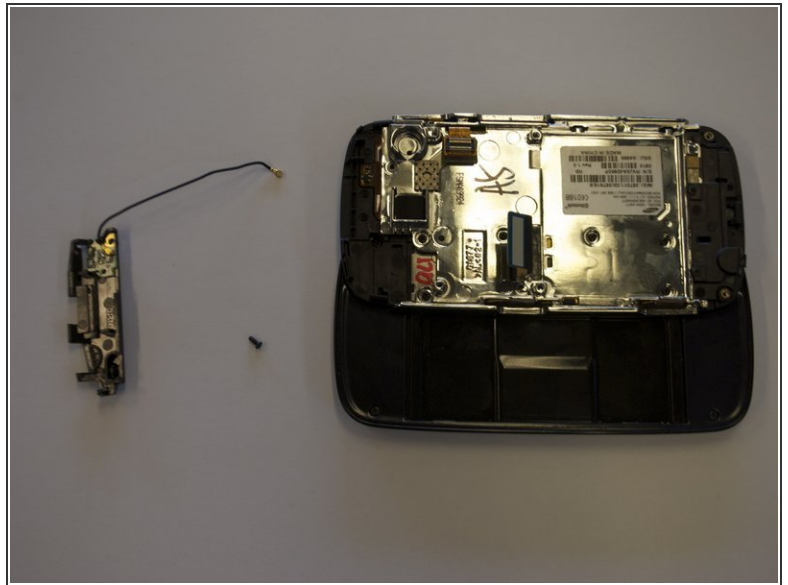
- To free the circuit board, remove the black wire that is holding it down.
- ⓘ You can remove the wire by gently prying up the gold terminator that is attached to the green circuit board. A gentle tug is all it will take.

Step 6



- The circuit board will still be held on by a blue and black ribbon that is removed by gently pulling it upwards.

Step 7 — Antenna



- Remove the 3.9mm screw holding the bottom black piece (antenna assembly) into place.
- The antenna assembly will snap off.

To reassemble your device, follow these instructions in reverse order.