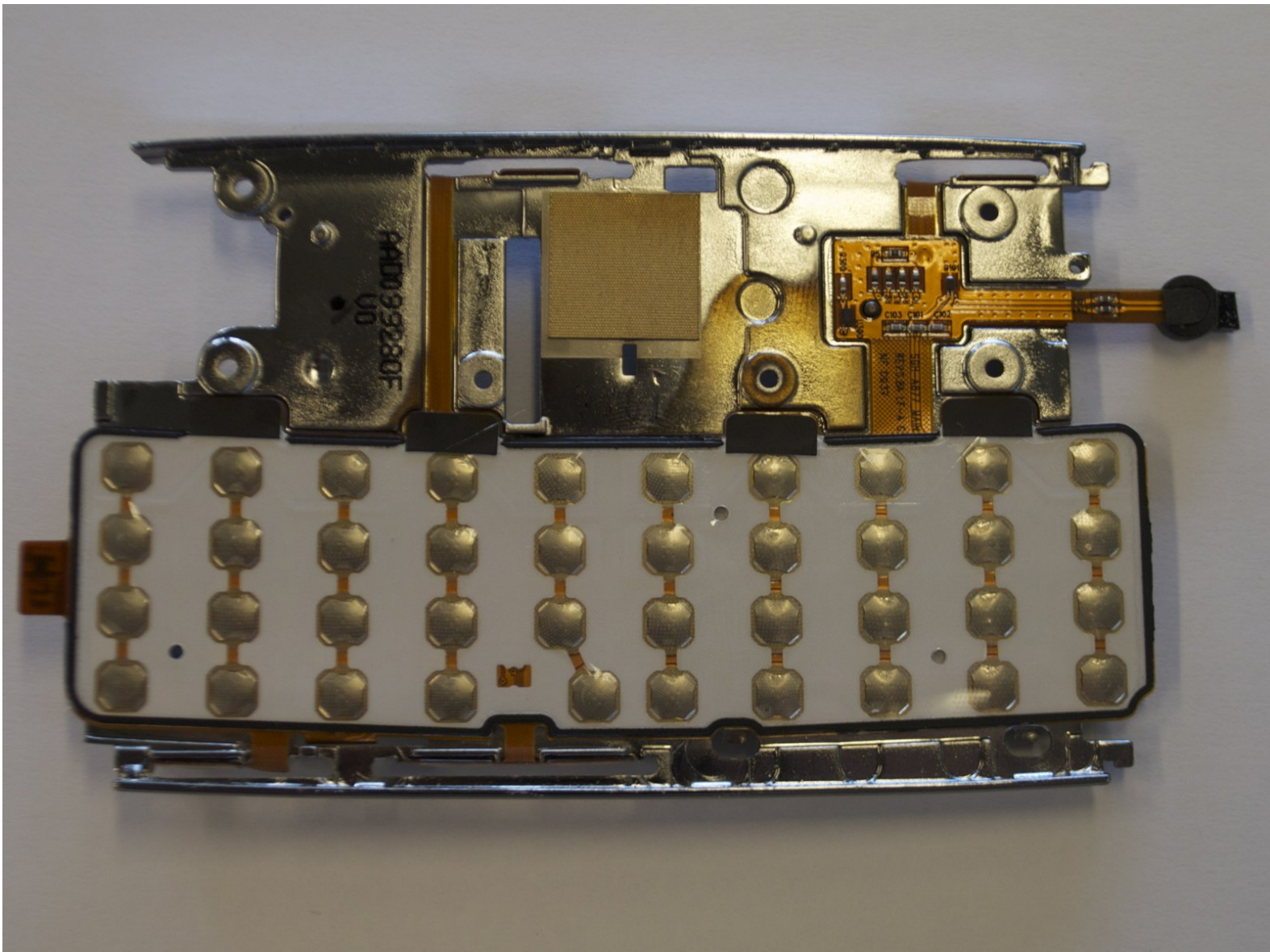




# Samsung Impression Keyboard Replacement

How to remove & replace the phone's keyboard.

Written By: Ross McKelvie



---

## INTRODUCTION

How to remove & replace the phone's keyboard.



### TOOLS:

- [Phillips #0 Screwdriver](#) (1)
-

## The image shows the back of a black Samsung SGH-D600 flip phone. The phone is closed, showing its rounded rectangular shape. The back cover is black with a slightly textured finish. In the upper left, the "SAMSUNG" logo is embossed. In the lower right, there is a silver-colored camera lens surrounded by a square frame, with a small speaker grille above it. The phone is set against a plain white background.

- Orient the phone with the screen facing down.
- Using your thumb, slide the back panel away from the camera to expose the battery.

## A close-up photograph of a person's hand holding a black Samsung smartphone. The back cover is removed, revealing the internal components. The battery is a large black rectangle with the 'SAMSUNG' logo in white. To the right of the battery is a silver SIM card slot with a small white triangle pointing to the right. Above the SIM slot is a small square camera lens. The phone is held against a plain white background.



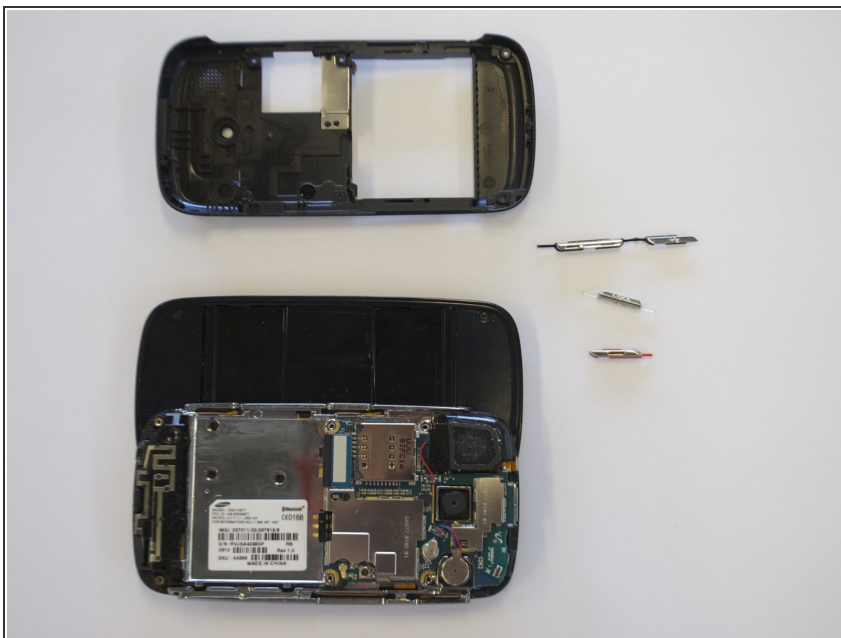
- Grip the battery on its sides, opposite the direction of the white arrow.
- Pry the battery up. It will pivot at the end with the white arrow. The battery will now be free.

## Step 3 — Back Cover



- Remove the 6 outer screws.
  - The screws should be 3.5 mm in length.
- ⚠ Put the screws in a safe place as they are very small and easy to lose.

## Step 4



- Snap off back the cover by gently prying around the top and bottom edges with a flat head screwdriver.
  - ⓘ It may help to slide the touchscreen upwards when removing the back panel.
- The side buttons will become loose and are prone to fall out, so put these in a safe place.

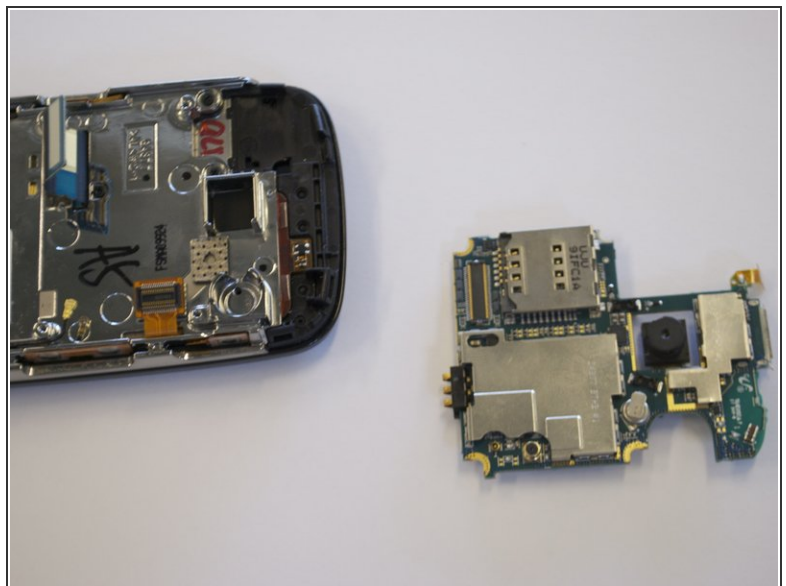
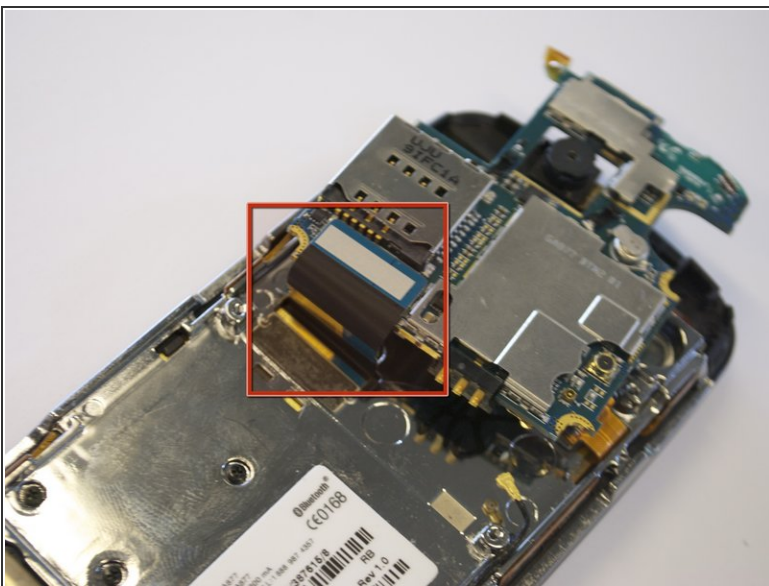


## Step 5 — Circuit Board



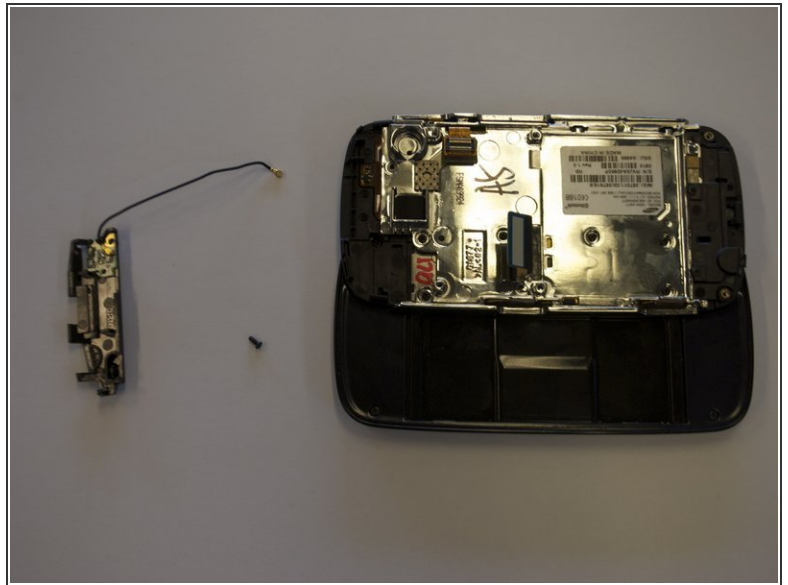
- To free the circuit board, remove the black wire that is holding it down.
- ⓘ You can remove the wire by gently prying up the gold terminator that is attached to the green circuit board. A gentle tug is all it will take.

## Step 6



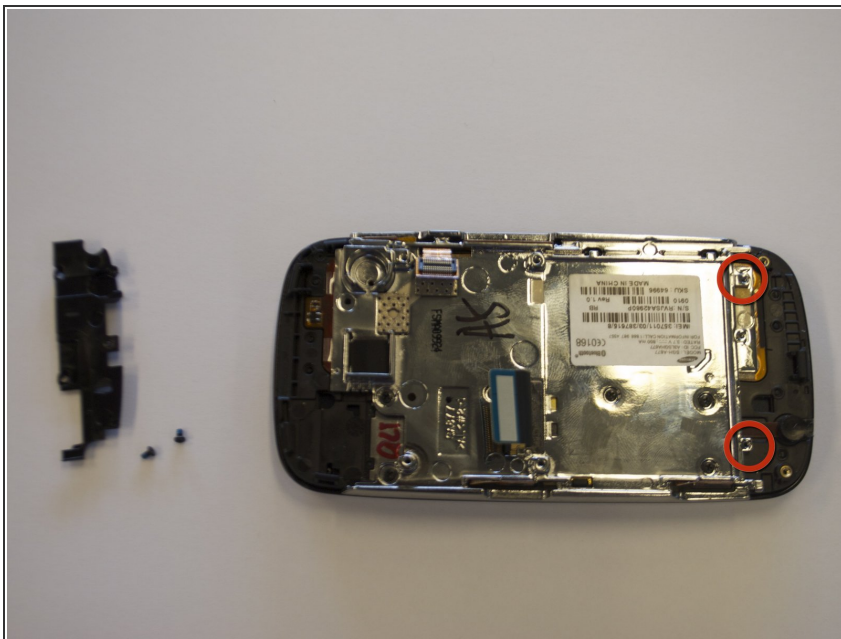
- The circuit board will still be held on by a blue and black ribbon that is removed by gently pulling it upwards.

## Step 7 — Antenna



- Remove the 3.9mm screw holding the bottom black piece (antenna assembly) into place.
- The antenna assembly will snap off.

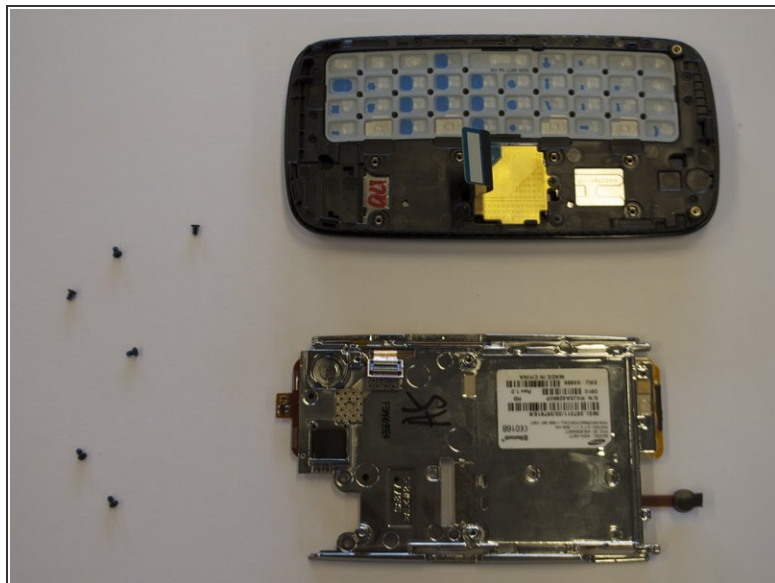
## Step 8 — Keyboard



- Remove the two base screws along the edge of the silver piece, where you just removed the black end piece.
- The screws are 2.7mm in length.
- The bottom black end cap will snap out.

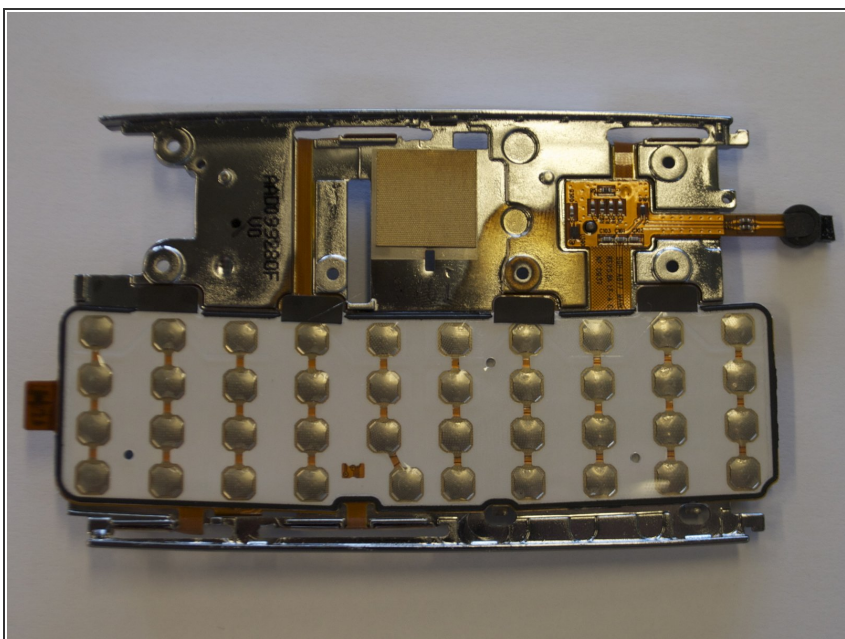


## Step 9



- Remove 6 screws holding the silver plate on.
  - 2.7mm in length
- The keys will peel right out of the screen side of the phone.

## Step 10



- The silver piece you are left with is the physical keyboard assembly.

To reassemble your device, follow these instructions in reverse order.