



Samsung Instinct LCD screen Replacement

This guide will show you how to replace the LCD screen on a Samsung Instinct.

Written By: Patrick



 **TOOLS:**

- [Phillips #00 Screwdriver](#) (1)
 - [iFixit Opening Tools](#) (1)
-

Step 1 — Battery



- Apply pressure to the back cover and slide it forward towards the camera.
- Lift the back cover off the phone.

Step 2



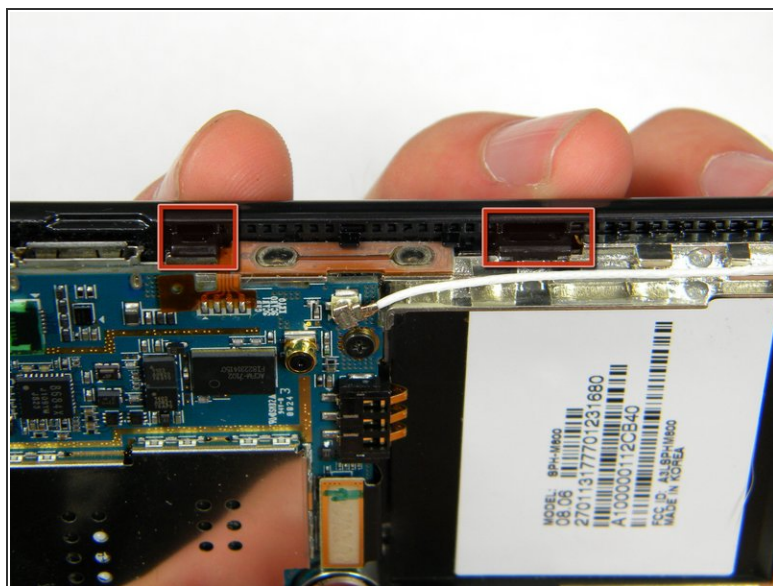
- Holding the phone firmly, use the notches to grip and lift up the battery.

Step 3 — Back Case



- Remove the four 4.45mm screws at the corners of the phone.

Step 4



- Use the plastic opening tool to unhook the locks around the edges of the phone.
- ⓘ Do not worry about the inner components of the phone; they are not connected to this case.

Step 5



- Lift the casing off of the phone.

Step 6 — Antenna



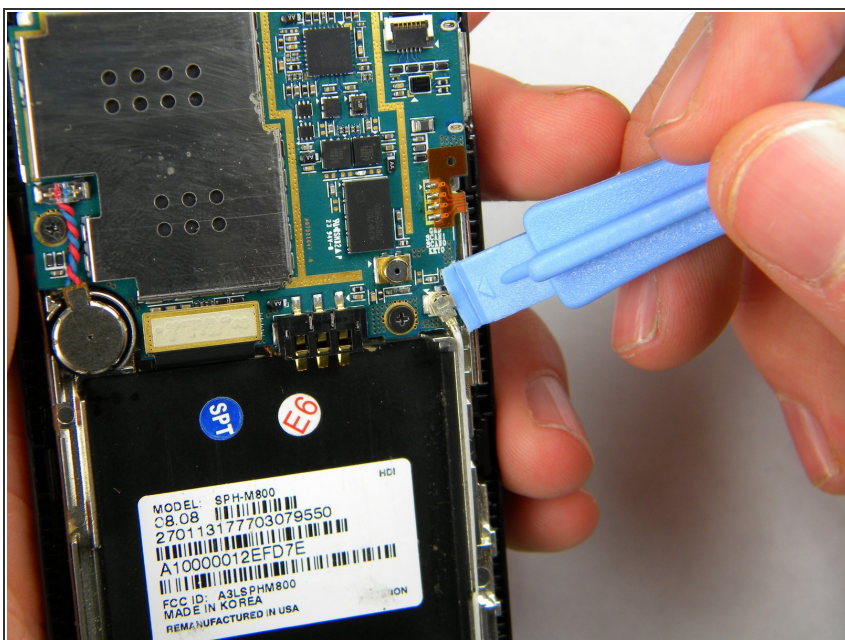
- With the screws removed, locate the antenna.

Step 7



- Using a Phillips head screwdriver, remove the 4.50mm screw holding the antenna in place.

Step 8



- Using the plastic opener tool, squeeze gently on the antenna cable connector and lift to remove the connector from its position.

Step 9



- Gently lift up on the antenna and remove it from the back of the device.

Step 10 — Front Case



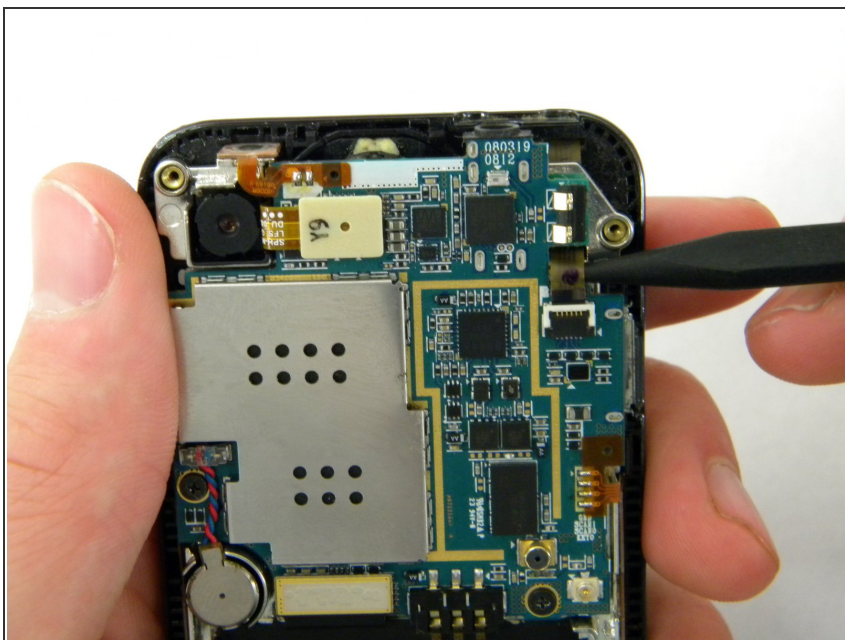
- Remove the two 3.50mm screws connecting the motherboard to the case.

Step 11



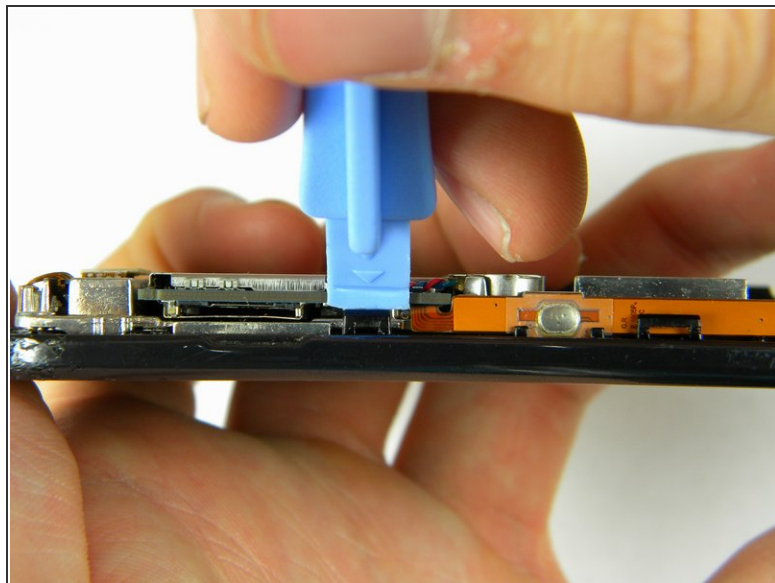
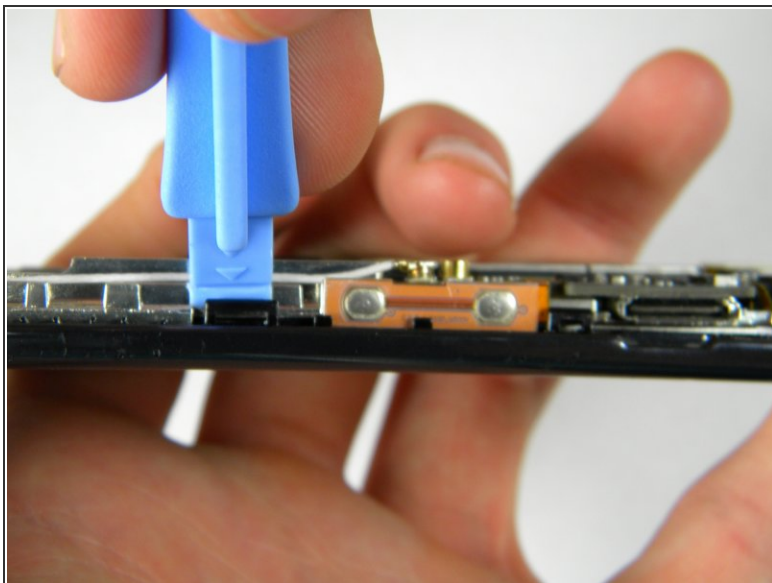
- Use the plastic opener tool to detach the three ribbons on the motherboard.

Step 12



- Lift out the top right ribbon from its slot on the motherboard.

Step 13



- Use the plastic opener tool to unhook the the locks on the side of the motherboard connecting it to the front casing.

Step 14



- Lift the motherboard away from the front casing.

Step 15



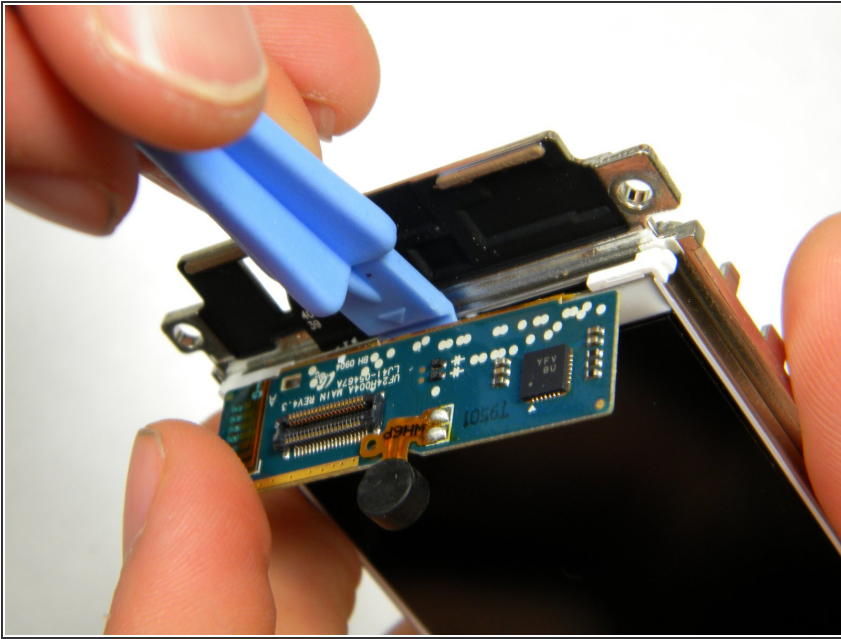
- After removing lifting up on the motherboard, the front casing and center frame should be separated as shown.

Step 16 — LCD screen



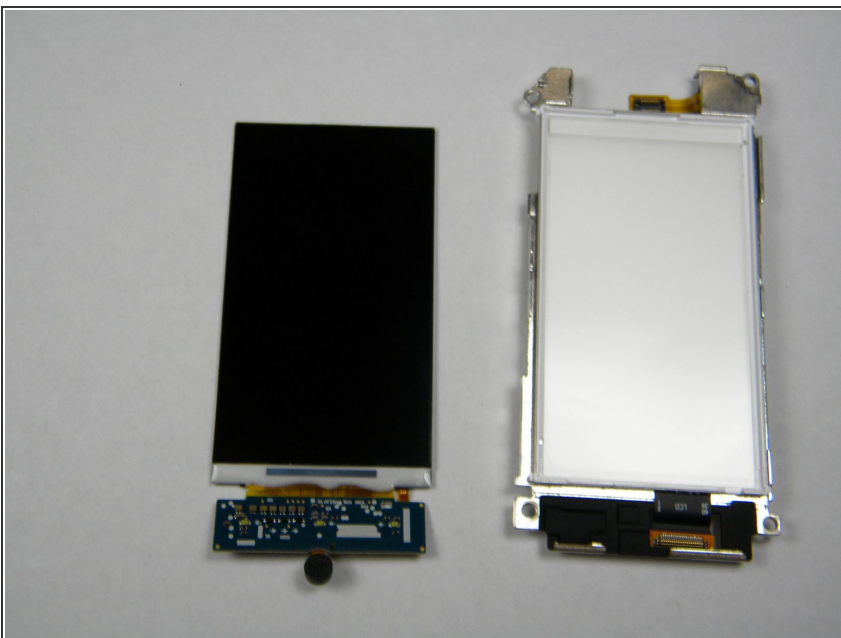
- Using the plastic opener tool, detach the ribbon located on the bottom of the phone below the battery compartment.

Step 17



- Lift the microchip (located at the bottom of the phone) and insert the plastic opener tool under the screen.
- Lift up the screen. The microchip is attached to the screen and will be lifted out with the screen.

Step 18



- After lifting out the LCD screen, the screen and its housing should be separated as shown.

To reassemble your device, follow these instructions in reverse order.