



Samsung Jack Rear Case Replacement

Replace the Samsung Jack's rear case.

Written By: Paul Piller



INTRODUCTION

Use this guide to install a rear case.



TOOLS:

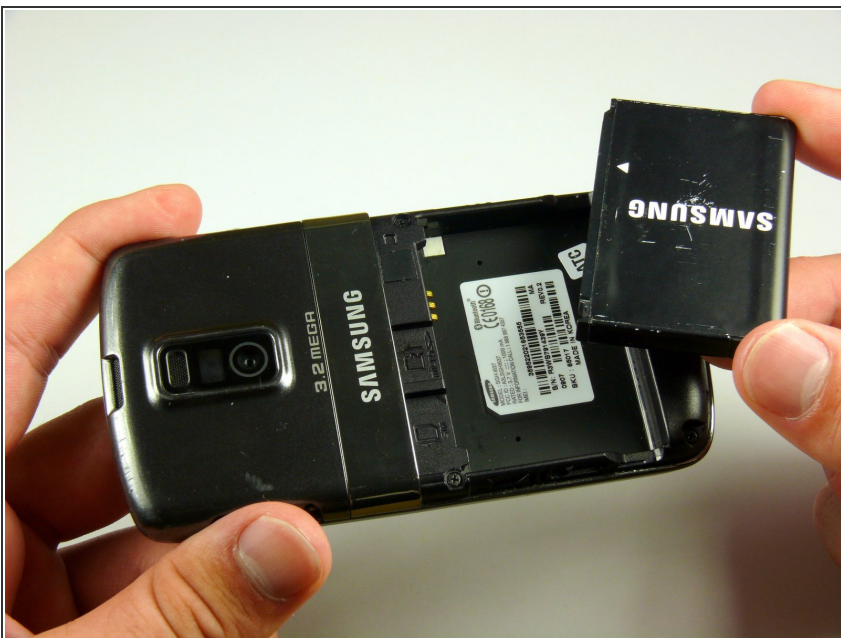
- [Phillips #00 Screwdriver](#) (1)
 - [iFixit Opening Tools](#) (1)
-

Step 1 — Battery



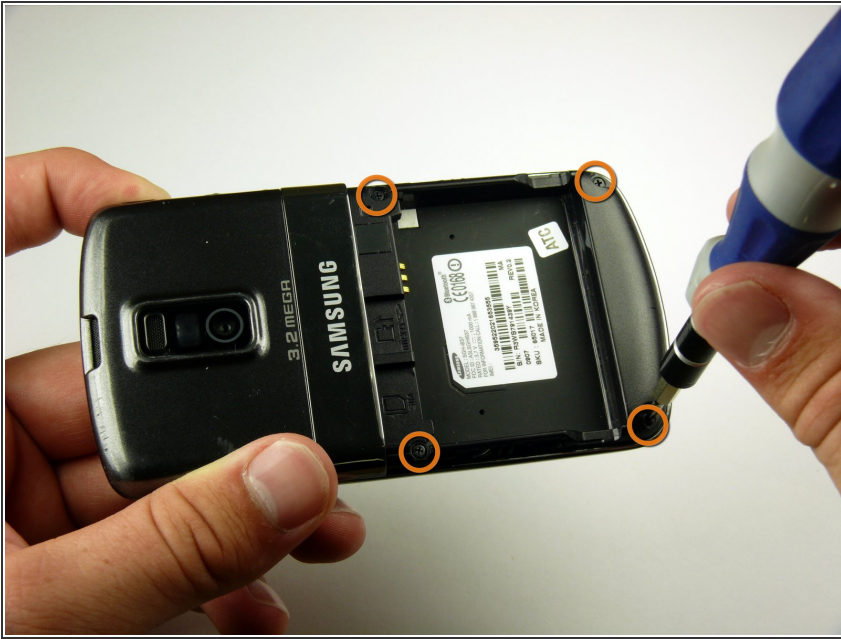
- Slide the battery cover downwards with pressure focused on the center of the cover.
- Lift the cover off of the phone.

Step 2



- Grasp the bottom left and right corners of the battery and lift it from its housing.

Step 3 — Rear Case



- Remove the four black 7.30 mm screws surrounding the battery housing using a Phillips #00 Screwdriver.

Step 4



- i** The rear case is firmly attached to the phone with clips. Do not be afraid to use a little extra force.
- Insert the Plastic Opening Tool in between the front and rear cases.
 - Pry with the Plastic Opening Tool around all edges of the phone until you free all the clips.

Step 5



- Lift the rear case off of the phone.

To reassemble your device, follow these instructions in reverse order.