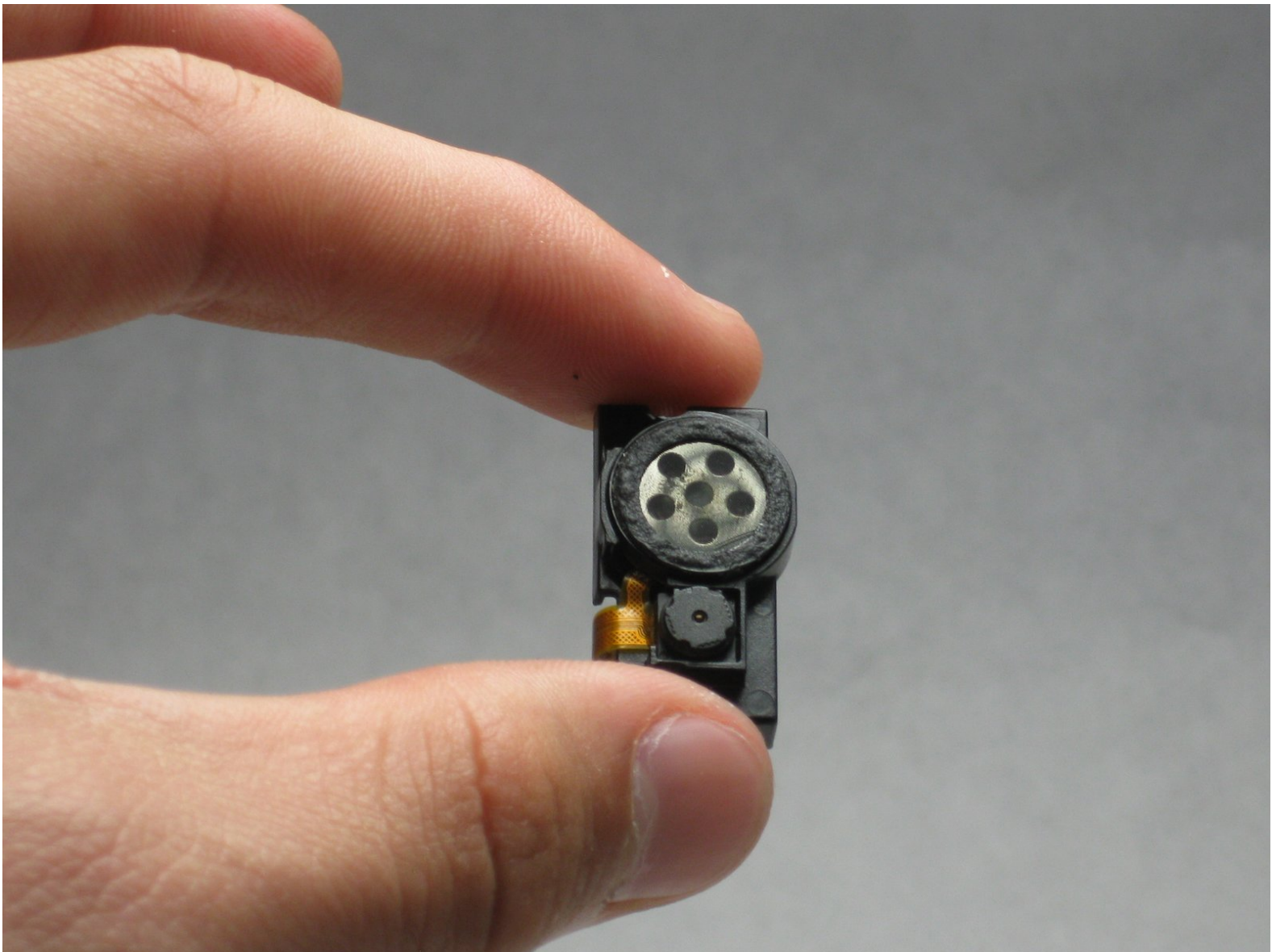




# Samsung Juke Camera/Speaker Replacement

This guide outlines the step by step instructions on removal of a Samsung Juke Camera/Speaker.

Written By: Renee Kuzniar



# INTRODUCTION

How-to-guide for replacing the Samsung Juke SCH-u470 camera/speaker.



## TOOLS:

- [iFixit Opening Tools](#) (1)
- [Phillips #00 Screwdriver](#) (1)



## PARTS:

- [Samsung Juke SCH-u470 Audio/Speaker](#) (1)

## Step 1 — Battery



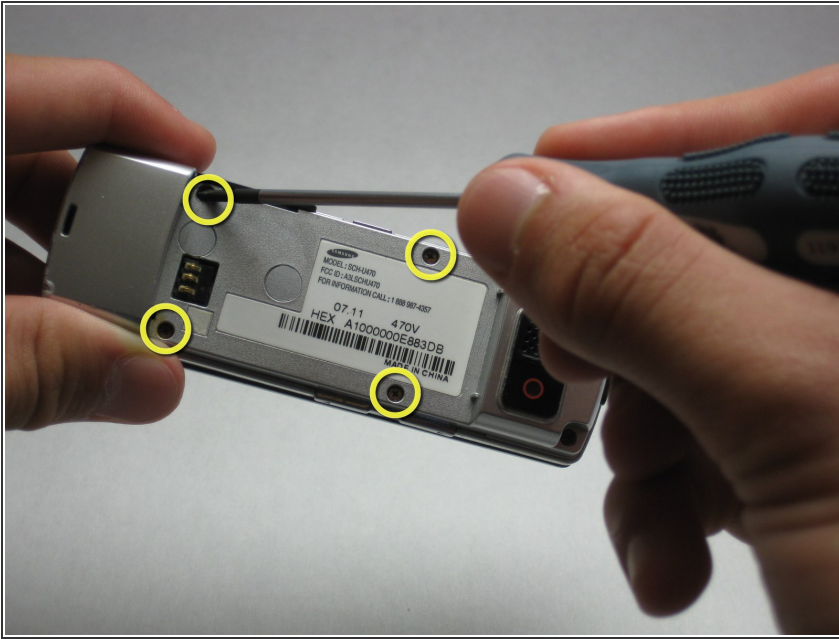
- Locate the button on the bottom of the phone. Once located, press and hold the button down.

## Step 2



- While holding the button down, remove the back cover of the phone.

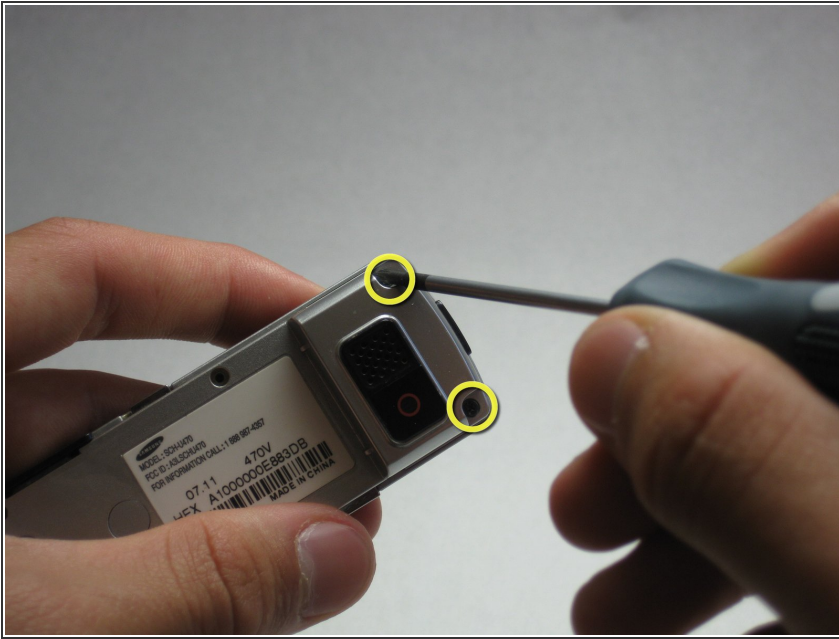
## Step 3 — Camera/Speaker



- Use the size 00 Phillips screwdriver to remove the four screws located on the back of the phone. These screws are circled in yellow in the given image.



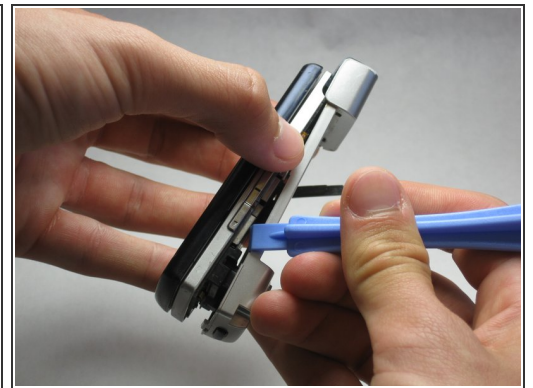
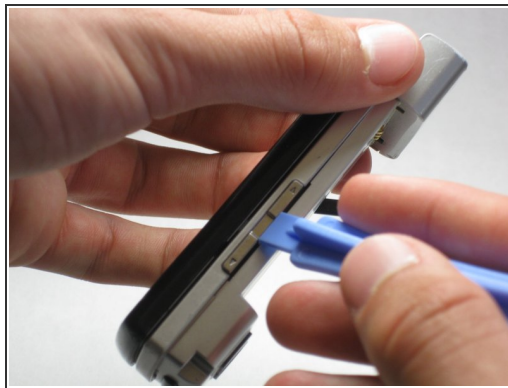
## Step 4



- Using the same 00 Phillips screwdriver, remove the two screws at the bottom back plate of the phone near the camera and the speaker.

ⓘ These screws will be 7.25 mm long.

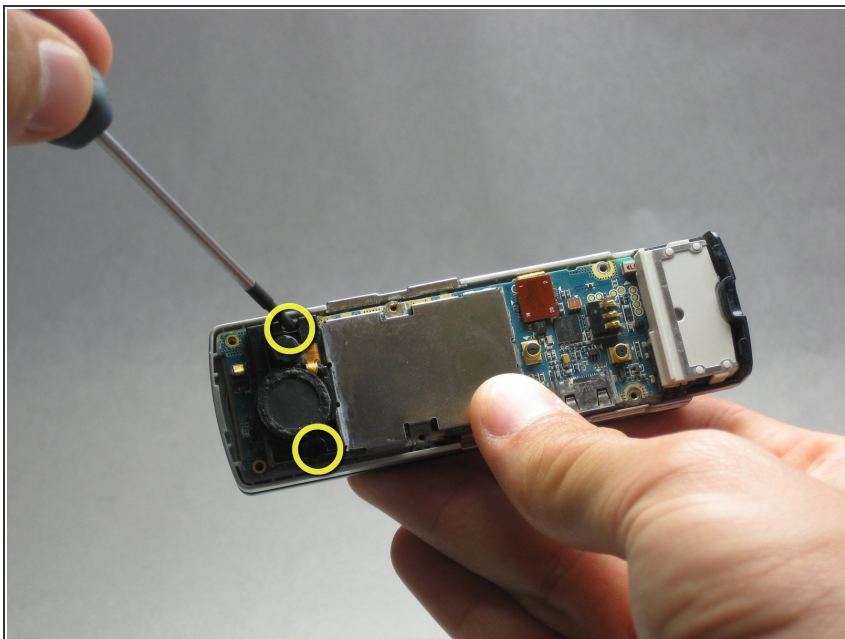
## Step 5



- Before proceeding, locate the USB port (where the charger can be plugged in) and open it using the iFixit Opening Tool.

⚠ Failure to open USB port cover at this stage may result in damaging the device.

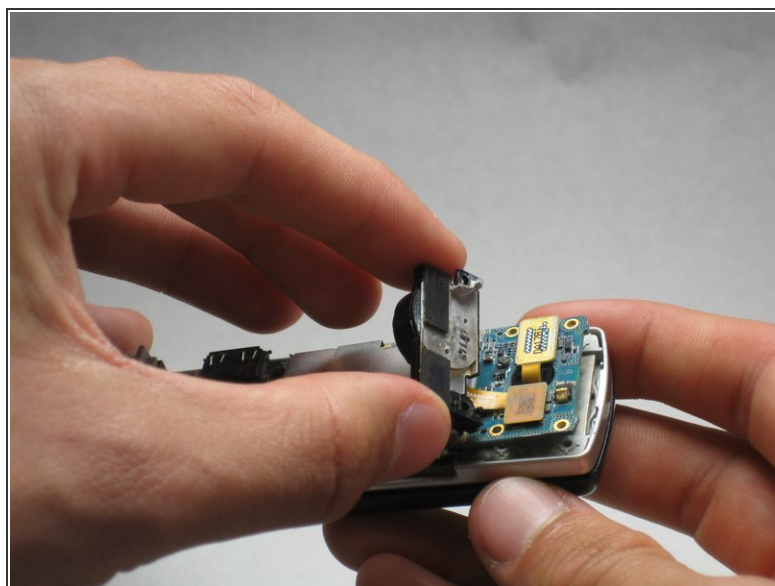
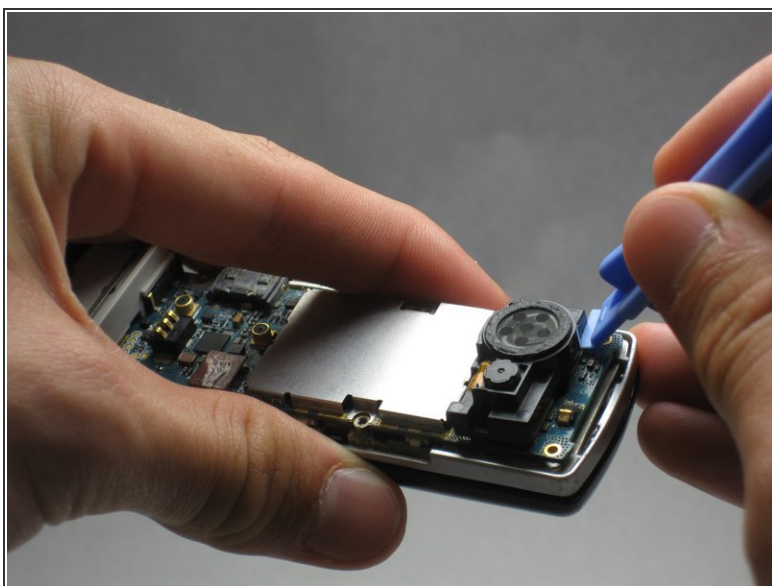
## Step 6



- Remove the screws on either side of the camera/speaker with a Phillips 00 screwdriver.

ⓘ These screws will be 5.45 mm long.

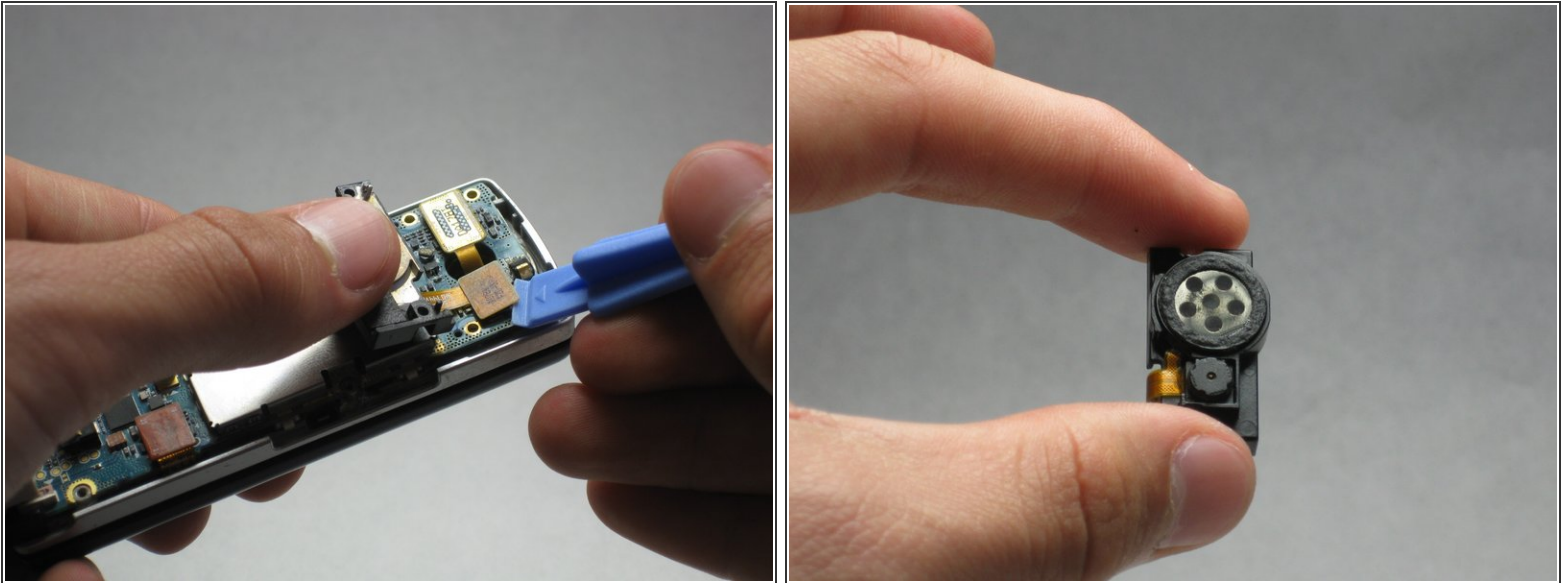
## Step 7



- Use the iFixit Opening Tool to begin removing the camera/speaker from the logic board.

⚠ Practice caution to prevent damage to the attaching ribbon.

## Step 8



- To completely remove the camera/speaker, locate the orange attachment beneath it (as shown in the image).
- Then, use the iFixit Opening Tool to gently pry the camera/speaker off.

To reassemble your device, follow these instructions in reverse order.