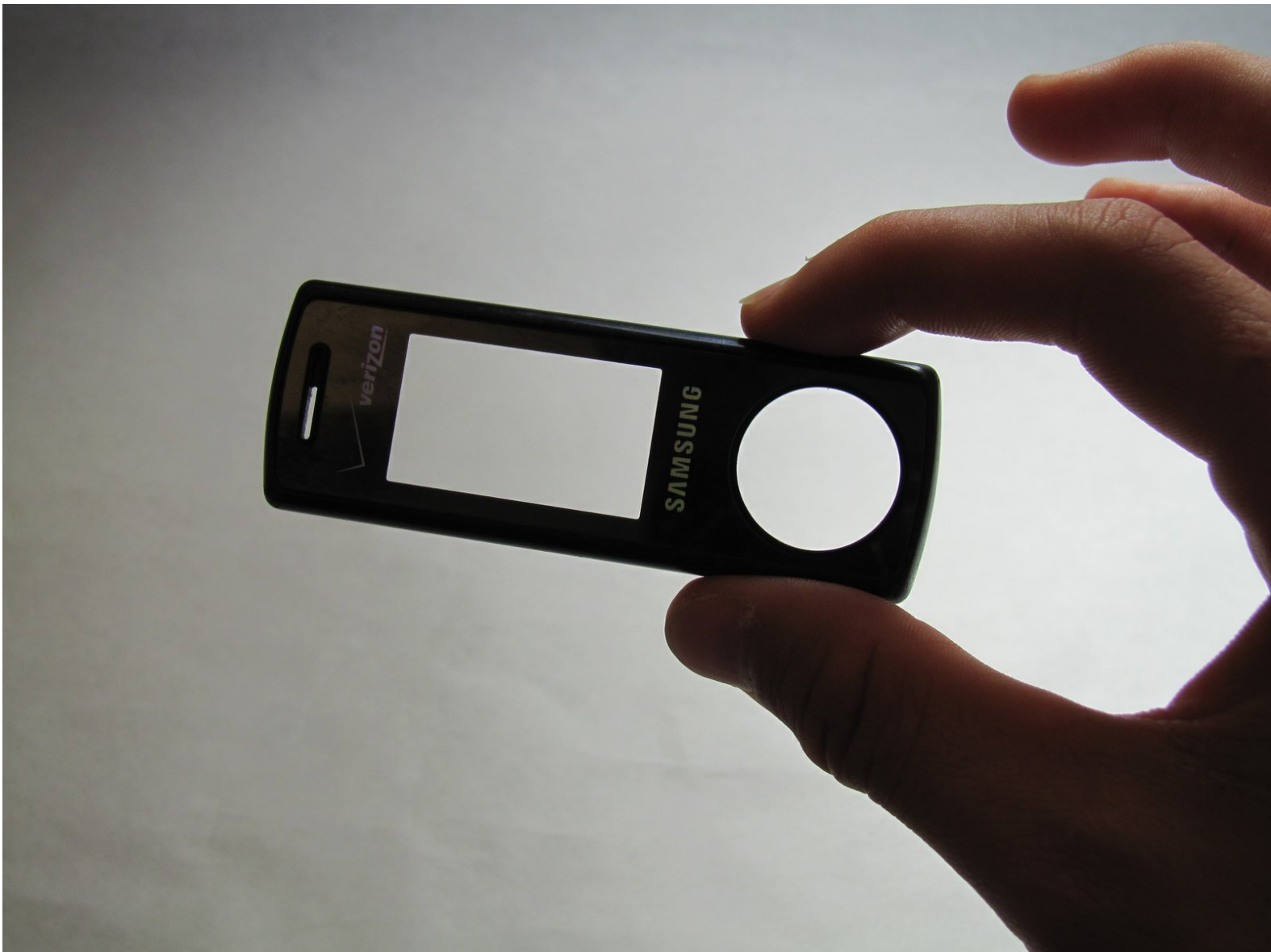




Samsung Juke Outer Casing Replacement

Step-by-step guide to replace the outer casing of the Samsung Juke.

Written By: Ryan Turner





TOOLS:

- [Spudger](#) (1)
 - [iFixit Opening Tools](#) (1)
-

Step 1 — Battery



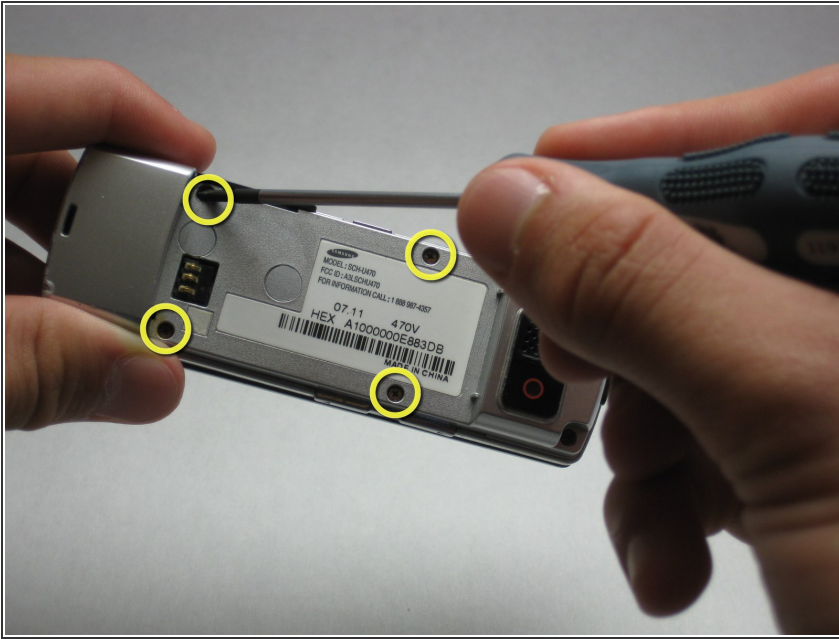
- Locate the button on the bottom of the phone. Once located, press and hold the button down.

Step 2



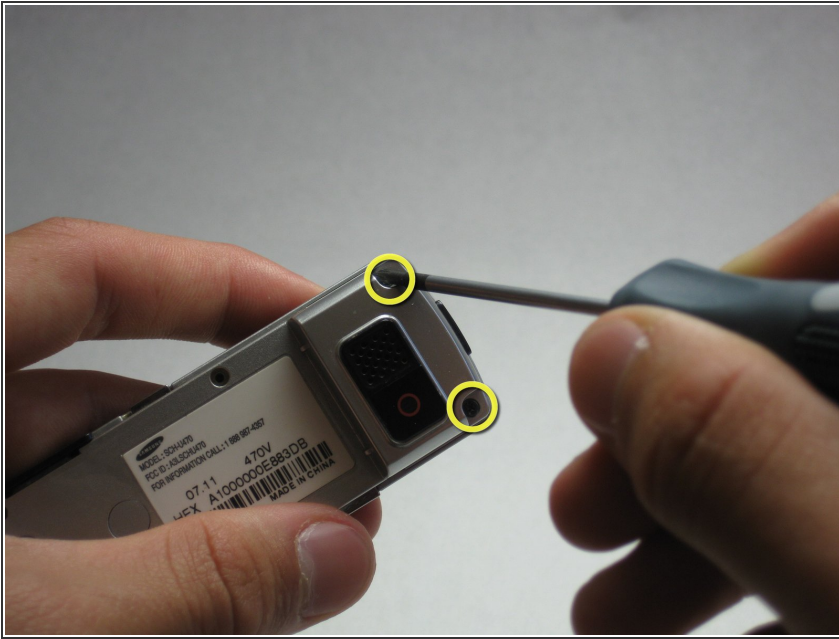
- While holding the button down, remove the back cover of the phone.

Step 3 — Camera/Speaker



- Use the size 00 Phillips screwdriver to remove the four screws located on the back of the phone. These screws are circled in yellow in the given image.

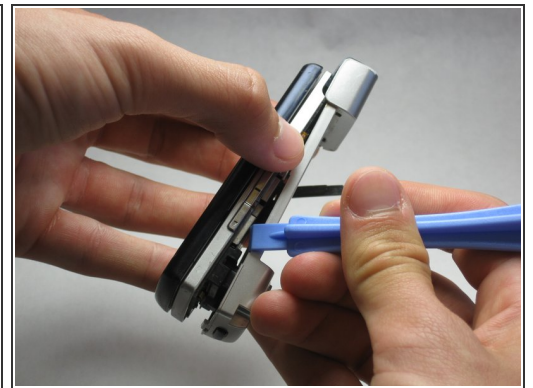
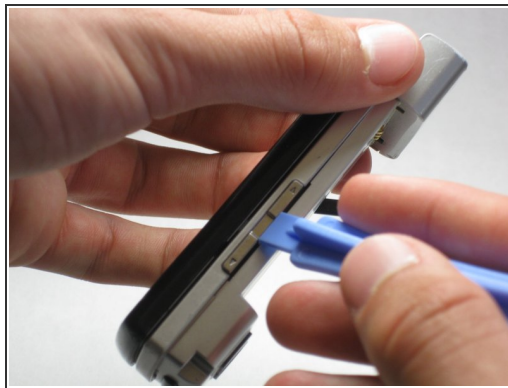
Step 4



- Using the same 00 Phillips screwdriver, remove the two screws at the bottom back plate of the phone near the camera and the speaker.

ⓘ These screws will be 7.25 mm long.

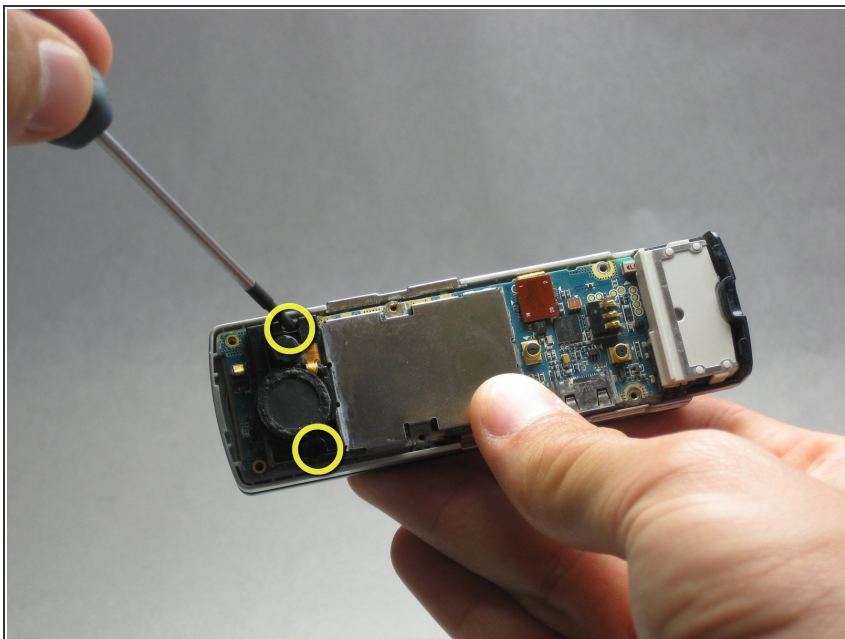
Step 5



- Before proceeding, locate the USB port (where the charger can be plugged in) and open it using the iFixit Opening Tool.

⚠ Failure to open USB port cover at this stage may result in damaging the device.

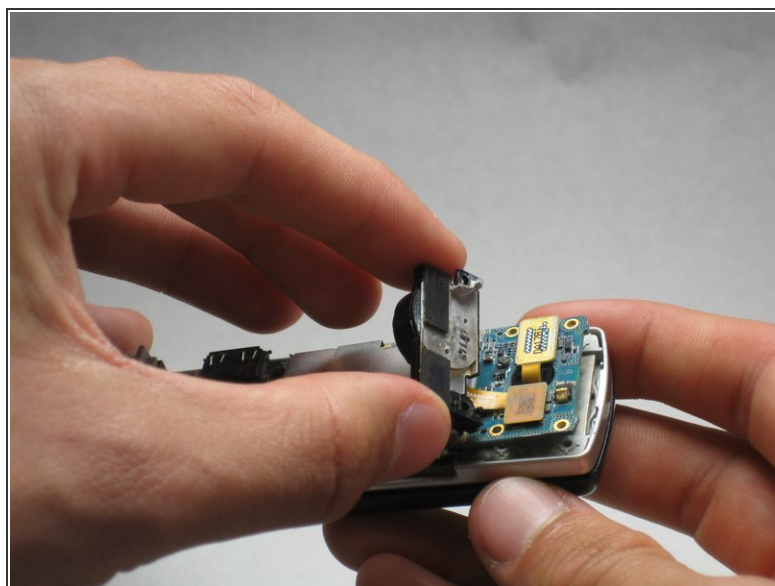
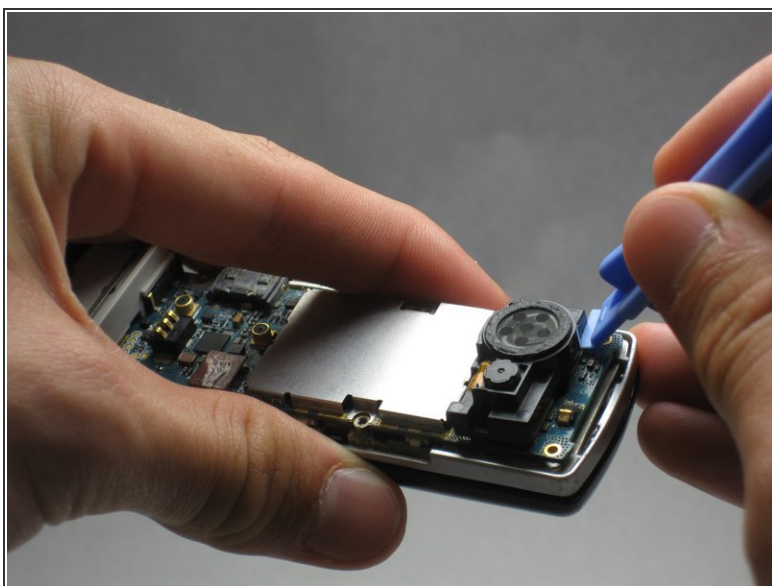
Step 6



- Remove the screws on either side of the camera/speaker with a Phillips 00 screwdriver.

ⓘ These screws will be 5.45 mm long.

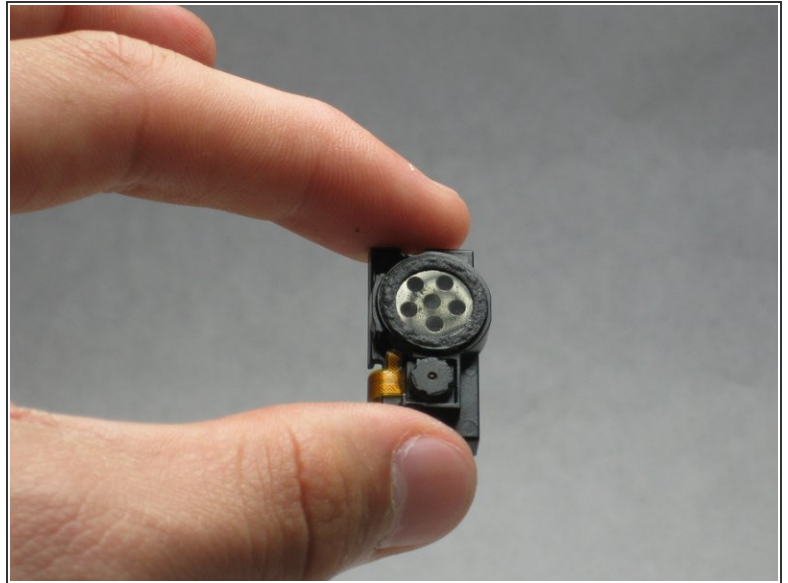
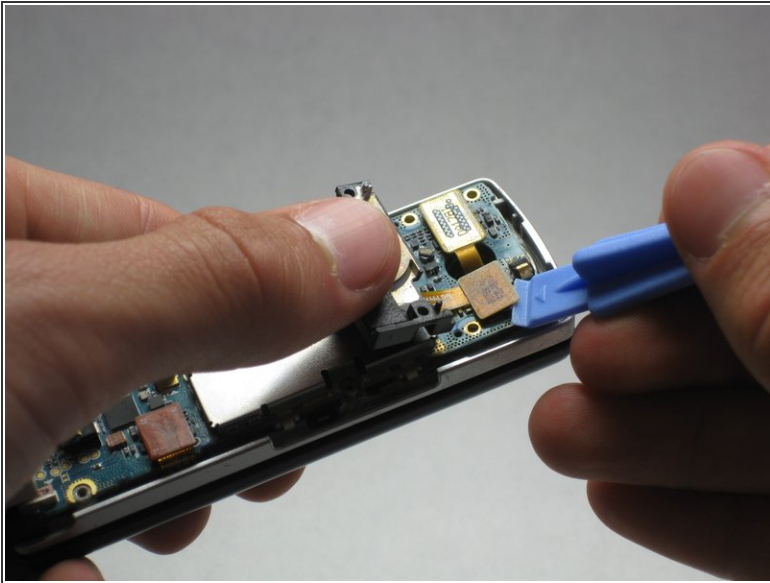
Step 7



- Use the iFixit Opening Tool to begin removing the camera/speaker from the logic board.

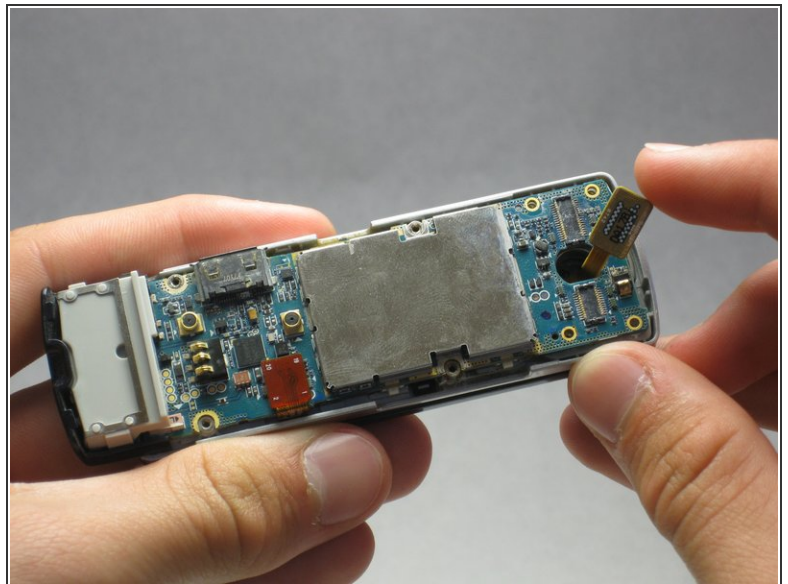
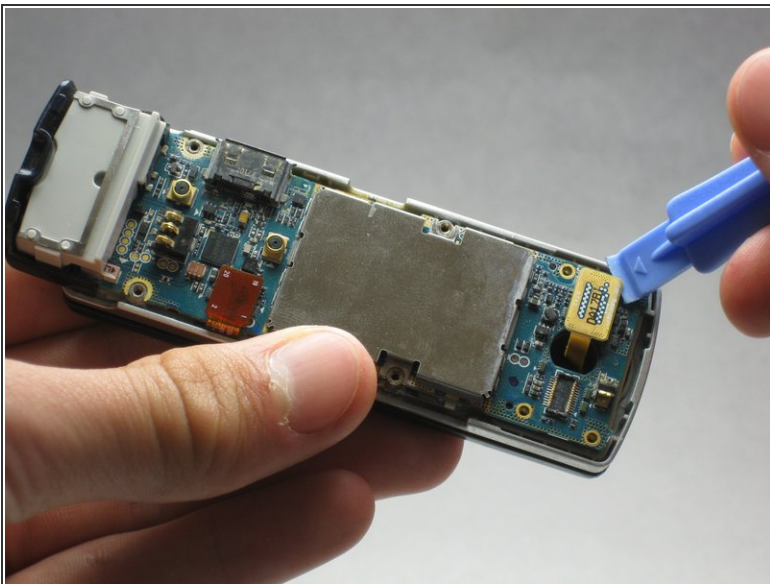
⚠ Practice caution to prevent damage to the attaching ribbon.

Step 8



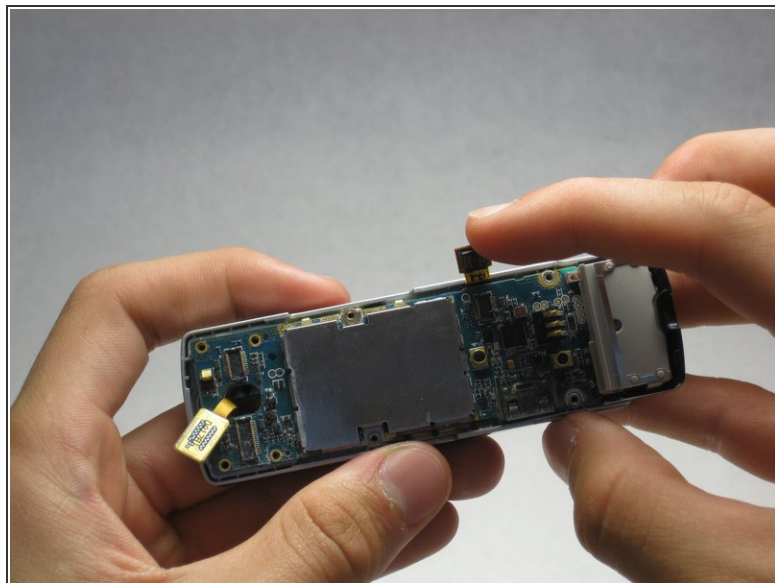
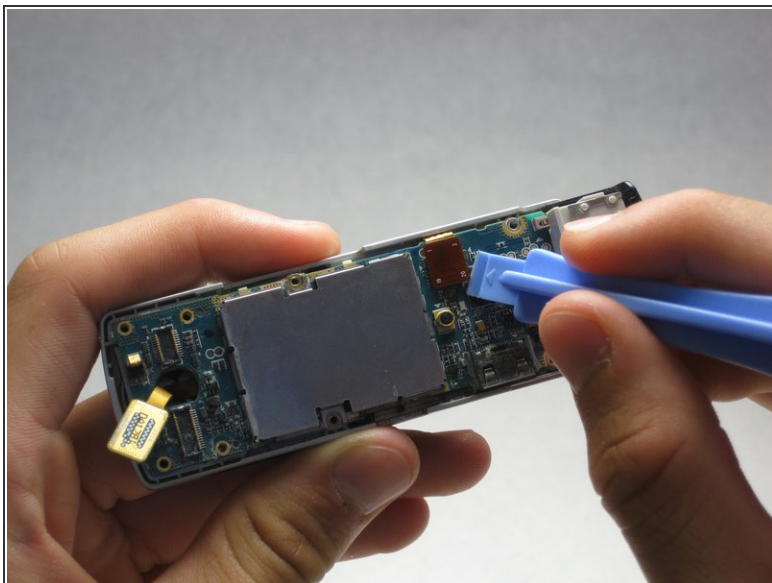
- To completely remove the camera/speaker, locate the orange attachment beneath it (as shown in the image).
- Then, use the iFixit Opening Tool to gently pry the camera/speaker off.

Step 9 — Logic Board



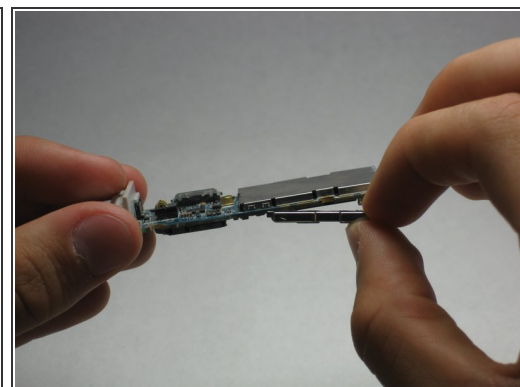
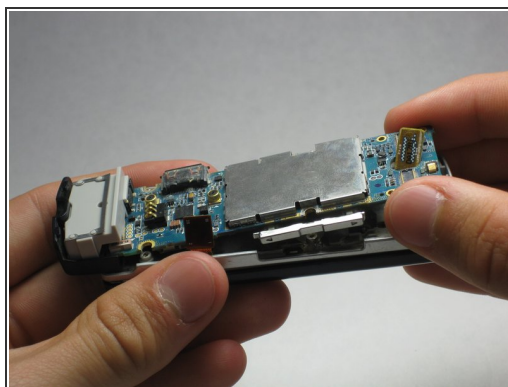
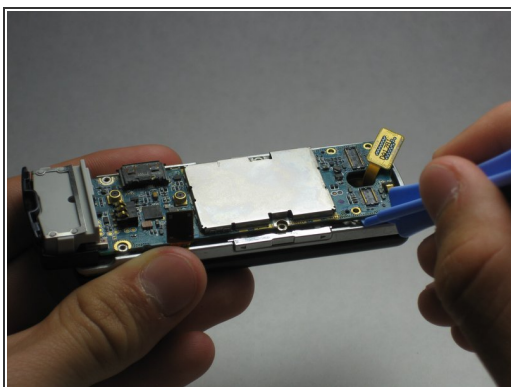
- Use the iFixit Opening Tool to pop off the yellow tab on the logic board.

Step 10



- Use the iFixit Opening Tool to pop off the other orange tab to free the logic board.

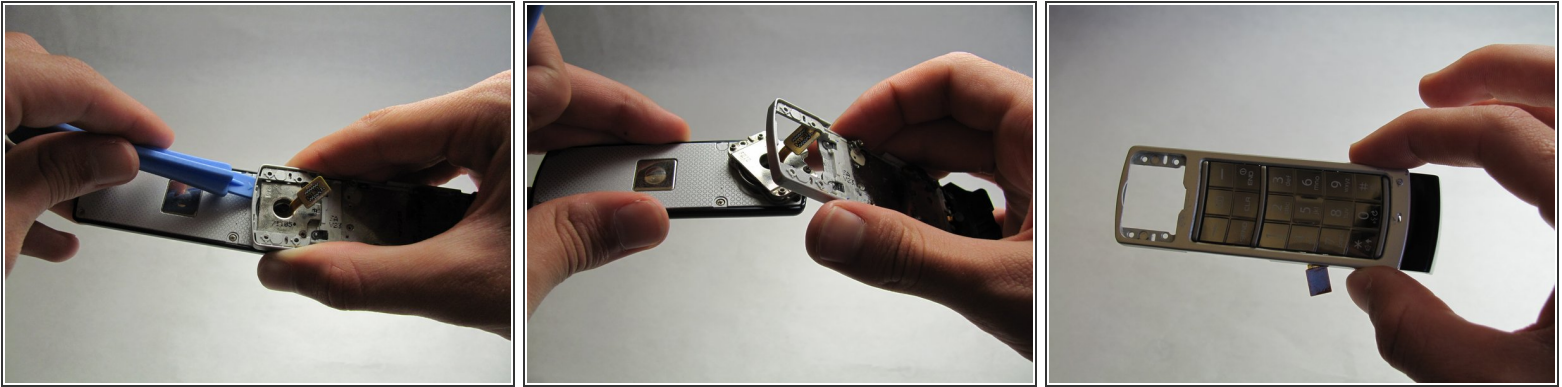
Step 11



- To completely remove the logic board, use the iFixit Opening Tool to pop it up, then use your fingers to pull it out.

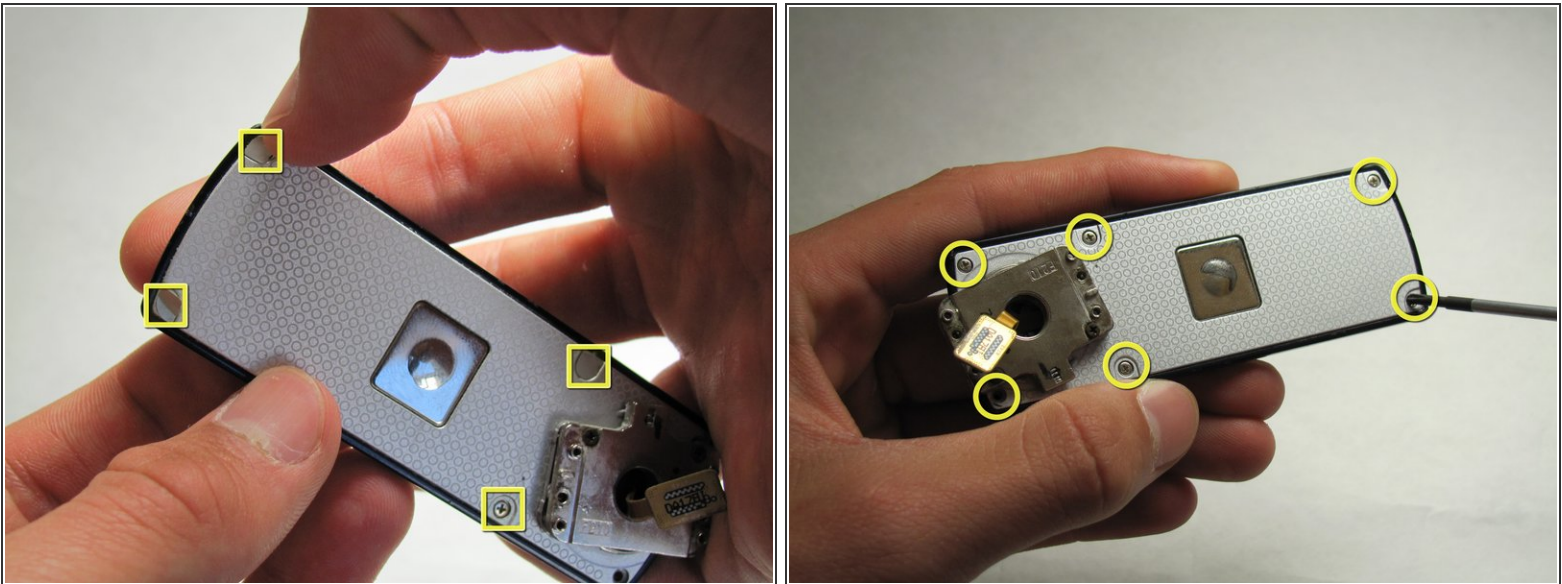
***i* Do not be alarmed if the volume and hold switch buttons are removed from the logic board.**

Step 12 — Keyboard



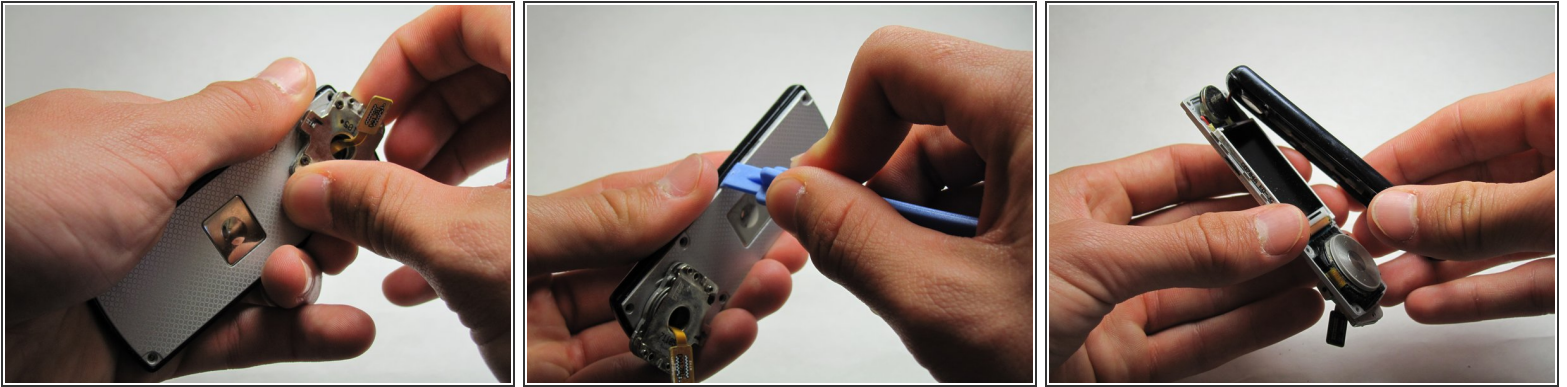
- Open/swivel the phone so the back of the LCD panel is visible.
- Use the iPod opening tool to pry the keypad from the hinge on the back of the device.
- ⓘ A moderate amount of force may need to be applied.

Step 13 — Click Wheel



- Using your fingernail, remove the stickers covering the screws on the back of the LCD casing.
- Using a phillips 00 screwdriver, remove all six screws on the back of the device.
- ⓘ These screws will be 3.45 mm long.

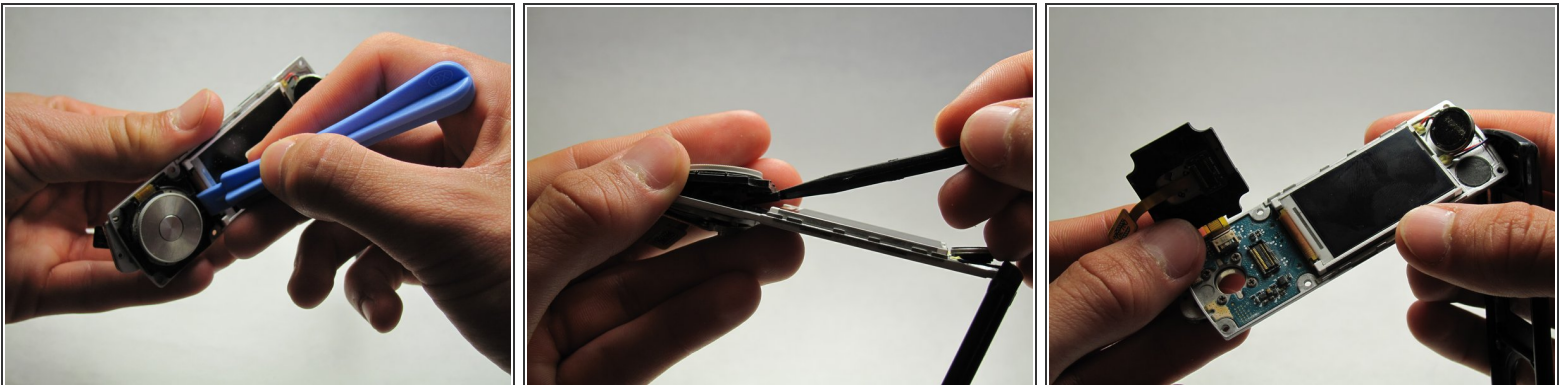
Step 14



- Using a generous amount of force, use your hands to pry loose the casing from the LCD panel.
- If necessary, use the iPod opening tool to completely free the casing.

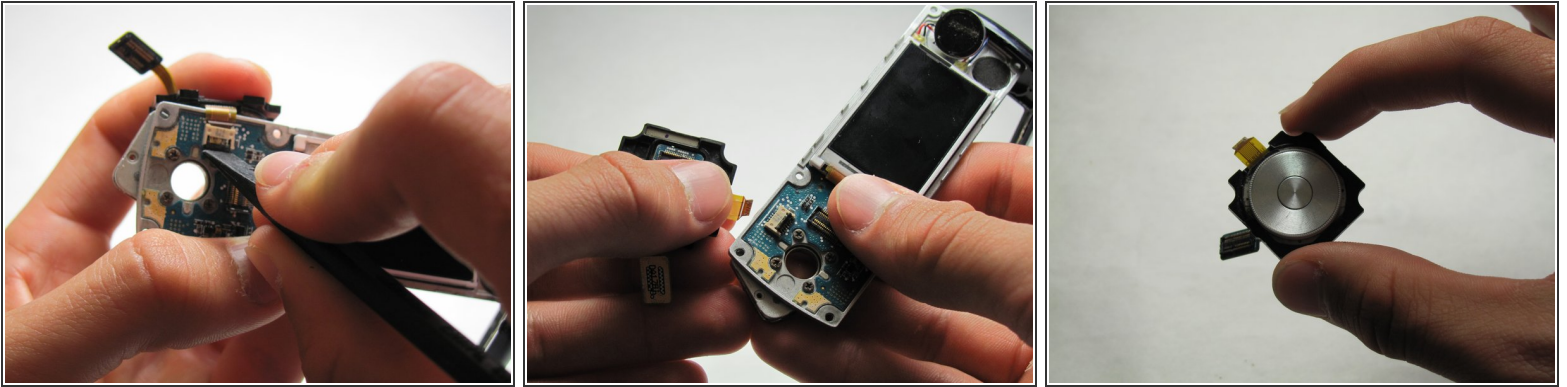
⚠ Be careful not to sever the wire connecting the outer casing to the display board.

Step 15



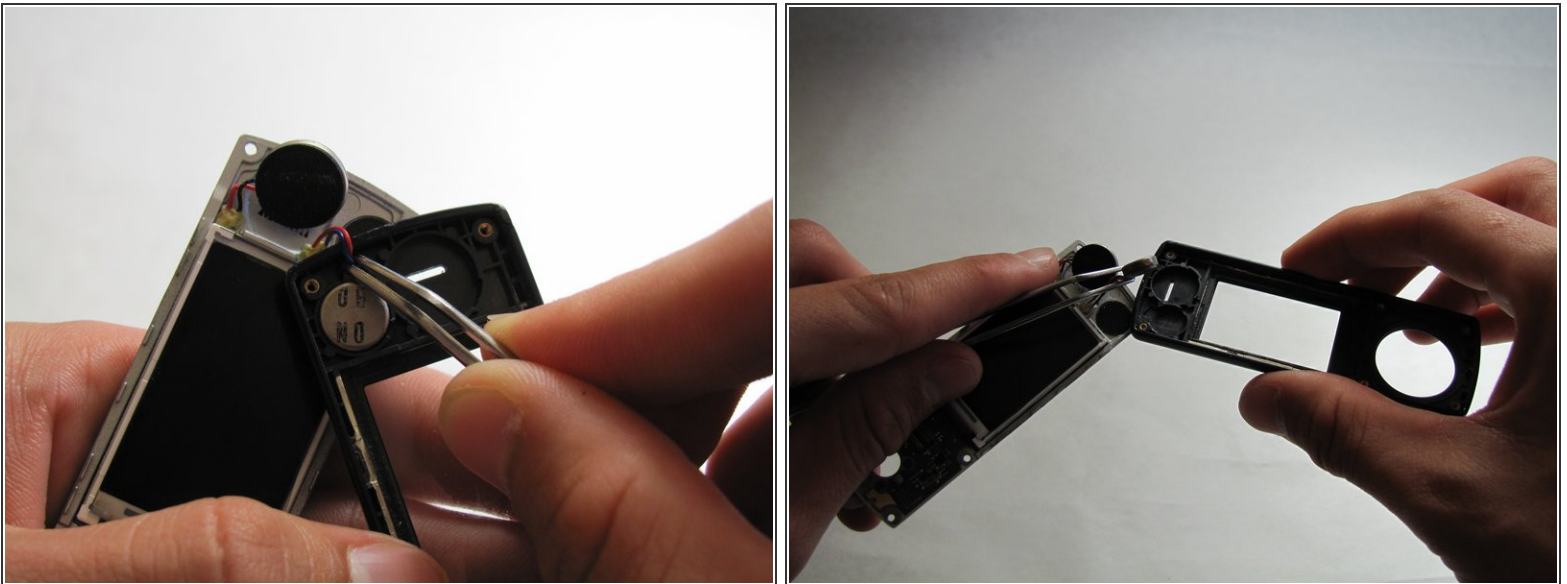
- Using the iPod opening tool, remove the click wheel from the board.
- After you have freed the edges, use the spudger to release the clip holding it flush to the board.


Step 16



- Unlock the ribbon connection by pressing down on the black clip.
- Carefully pull the click wheel away from the device.

Step 17 — Outer Casing



- Using tweezers, grip the red and blue wires that attach the audio earpiece to the outer casing and pull.
-  This is glued on so a moderate amount of force may be needed.

To reassemble your device, follow these instructions in reverse order.