



Samsung LE40 LED TV Cooling fan Replacement

Replacing noisy cooling fan for a reasonable price

Written By: Ben

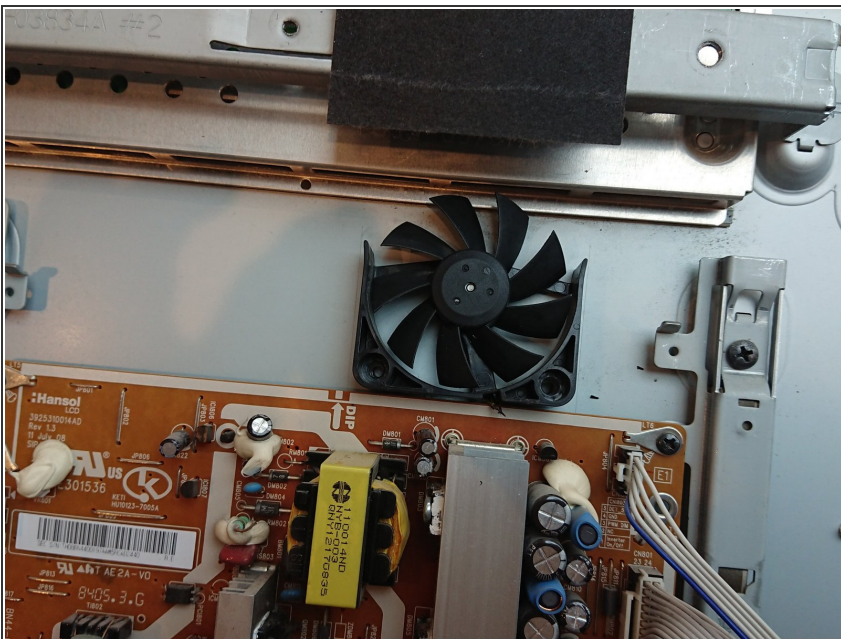


Step 1 — Cooling fan



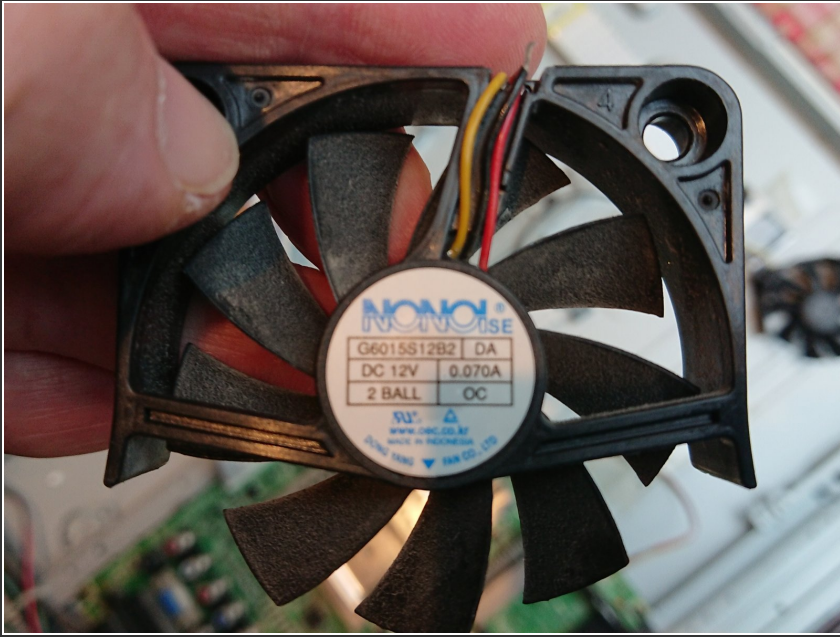
- Remove 19 screws around edges and one more centrally located. Remove TV Back panel.
- Be careful with the very small screw located near the PC card dock / HDMI In 4

Step 2



- Above main PCB you'll see the cooling fan, much like a PC fan. Here it is shown with no retaining screws and wiring.

Step 3



- With the fan removed you can find the Part Number on the reverse side.
- Googling this number gave me 2 options, a £45 replacement or a £10 one from Ebay.
- As you can see, the fan casing is slightly special as it is open on one side and the edges of the casing are slightly curved.
- What I didn't know is what my Ebay buy would look like, despite it being sold with identical Part Number the Suffix was different.

Step 4



- Ebay link - <https://www.ebay.co.uk/itm/252323993934>
- Genuine fan - <https://www.ebay.co.uk/itm/252323993934>

- I subsequently found a used fan available on Ebay so it's worth looking out for these. This said there is no guarantee that a used fan won't be noisy.

<https://www.ebay.co.uk/itm/INTERNAL-COOL...>

Step 5



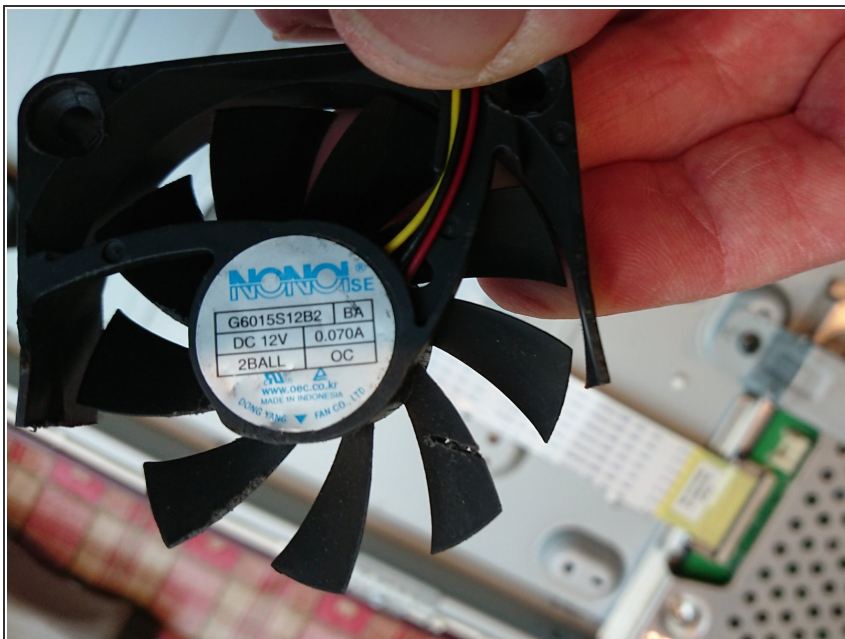
- Here is the fan that I received. Apologies , I took the photo after I had carved it up.

Step 6



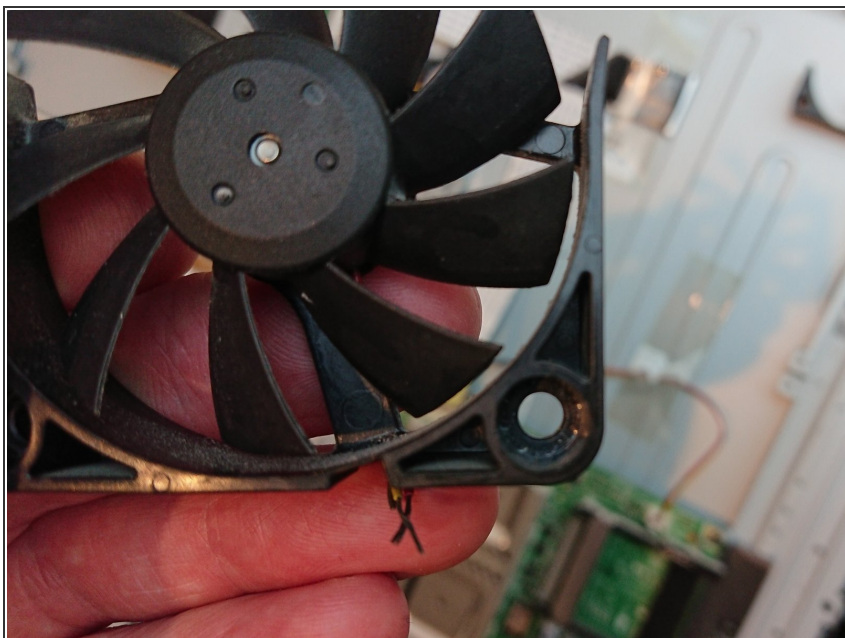
- Use a oscillating multi tool or small rotary cutting tool to remove the casing that is not required.

Step 7



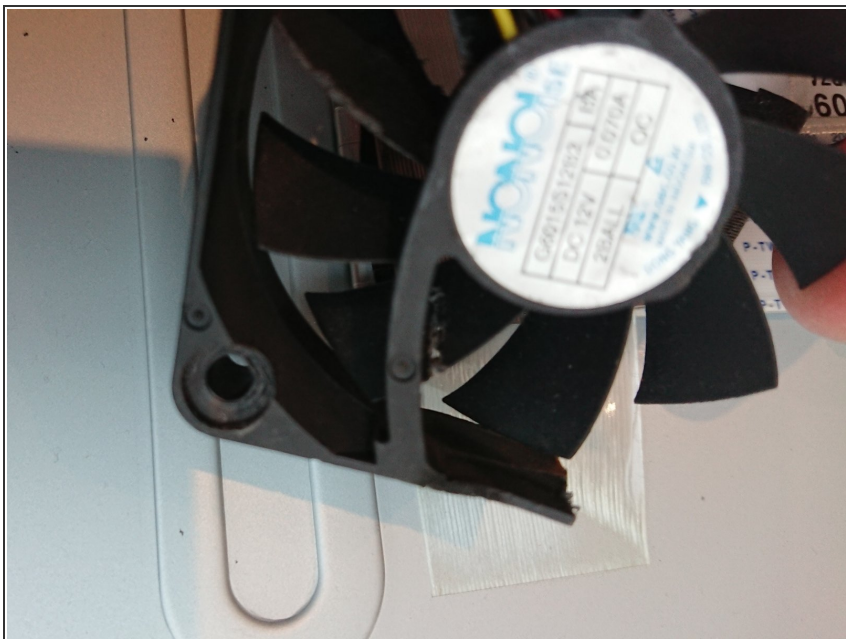
- Apply some heat to the sides of the casing using heat gun or lighter. This will allow you to bend the sides of the casing slightly to recreate the casing of the original.

Step 8



- Note on the original fan the retaining screw locations are recessed to allow it to locate on threaded posts.

Step 9



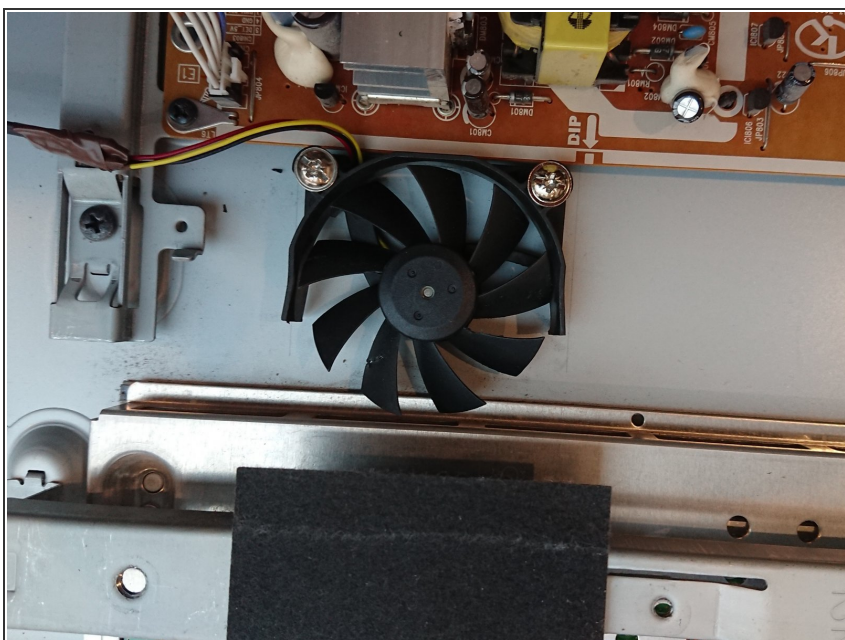
- Use an 8.5mm drill bit to create recesses on new fan casing

Step 10



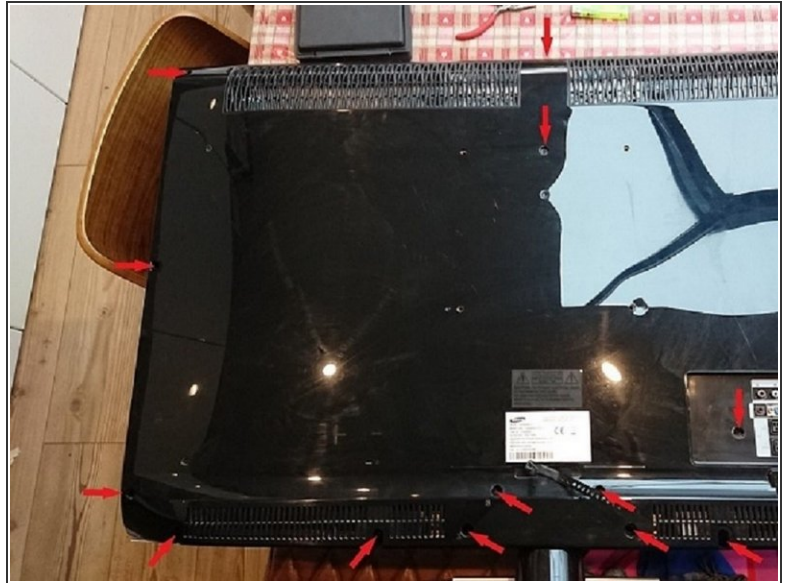
- Original screws (bottom) were not long enough to use on the new fan. I found some suitable screws (top) from some kitchen cupboard catches.

Step 11



- New fan installed.
- Note wiring on new fan was not long enough so I had to use the wiring from the original fan and solder on to the new wires after cutting connector off.

Step 12



- Refit TV back panel

To reassemble your device, follow these instructions in reverse order.