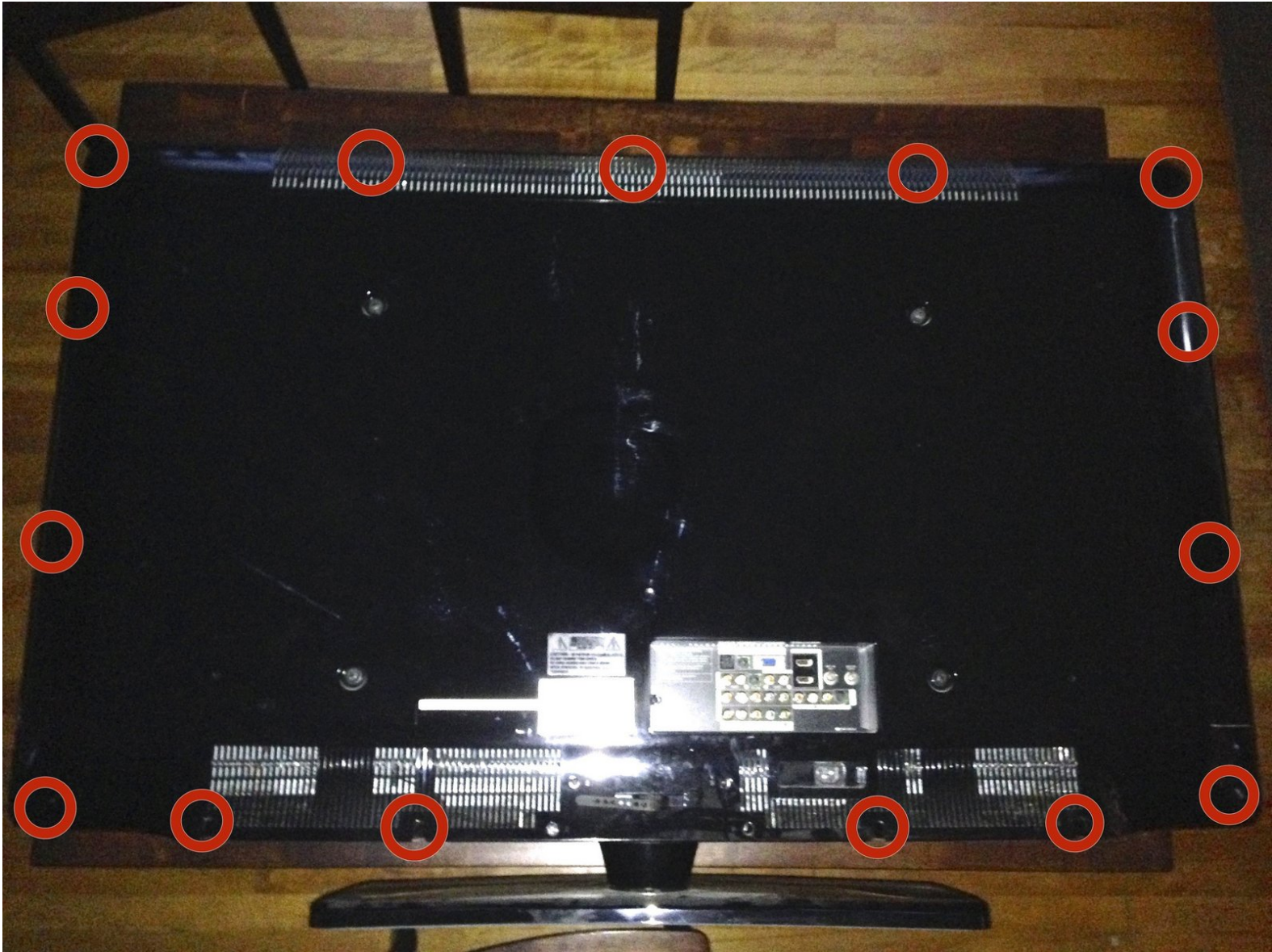




Samsung LN-T5265F Rear Case Replacement

Written By: Steven Carlton





TOOLS:

- [Phillips #1 Screwdriver](#) (1)
-

Step 1 — Stand



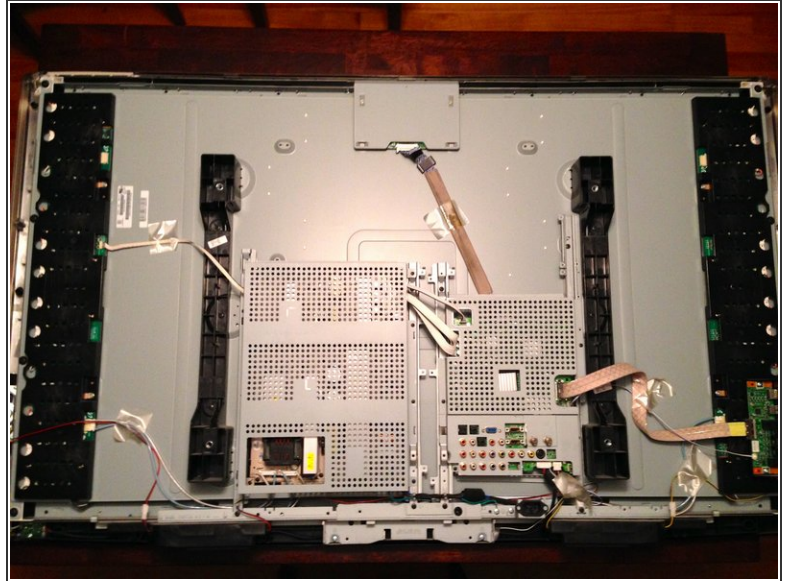
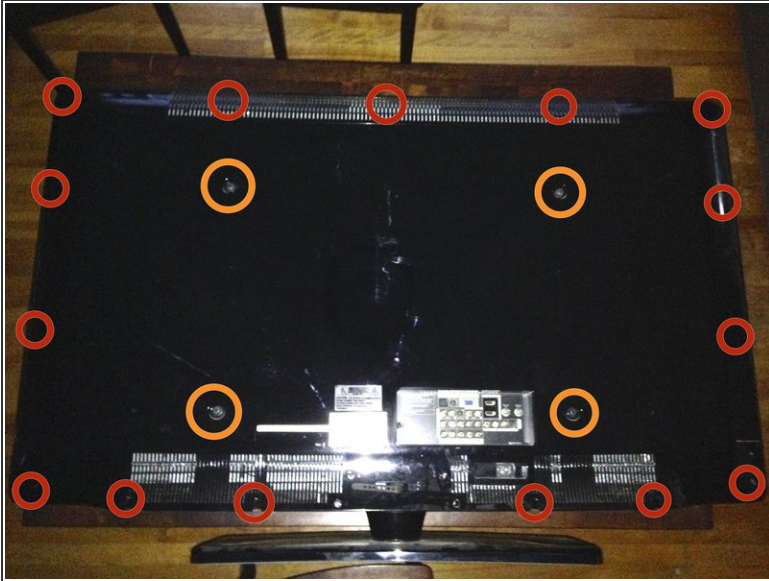
- Lay the TV screen-side down on a flat, soft surface.
- Remove four Phillips screws attaching the stand to the TV.

Step 2



- Slide the stand out from the bottom of the TV.

Step 3 — Rear Case



- Remove fifteen Phillips screws securing the rear case to the front.
- If present, remove four Phillips screws for the VESA mount.
- Carefully lift the rear case upwards to separate it from the frame of the TV.

To reassemble your device, follow these instructions in reverse order.