



Samsung LN40C530F TV Board(s) Replacement

Replacing the Samsung LN40C530F TV Power Supply Board Replacing the Samsung
LN40C530F TV Main Board

Written By: James Finch



INTRODUCTION

I was given a free Samsung Television model LN40C530F1FX2A that wouldn't power on that I found on Craigslist.

The Samsung LN40C530F TV was found to have a solid Red LED on the front panel when plugged in. Upon attempting to power on with the remote, the audio sounded the power on melody and the backlight turned on then off on the fourth LED blink. The LED only blinked red and turned off on the sixth flash. The power off melody sounded when pressing the power button on the remote again where the LED stayed solid RED.

The voltages of the Power Supply board were tested and I found the 13V rails were all testing 12.1V.

All other voltages, other than the 800V CN801 that was not tested, were found to be in specification.

When the main board was unplugged from the Power Supply board the backlight was found to stay on when powered ON.

After reading feedback from others, the solution appears to be to replace the main board next to see if the system functions as specified.

I've found other free TV's on offerup.com, letgo.com and other online sites. These are good sources of electronics to practice on if you are a student, hobbyist or whatever compels you to save some electronics from going into the junk yard. Enough of the electronics restore, repair, re-use and recycling advocacy. Let's get repairing!



TOOLS:

- [Phillips #3 Screwdriver](#) (1)



PARTS:

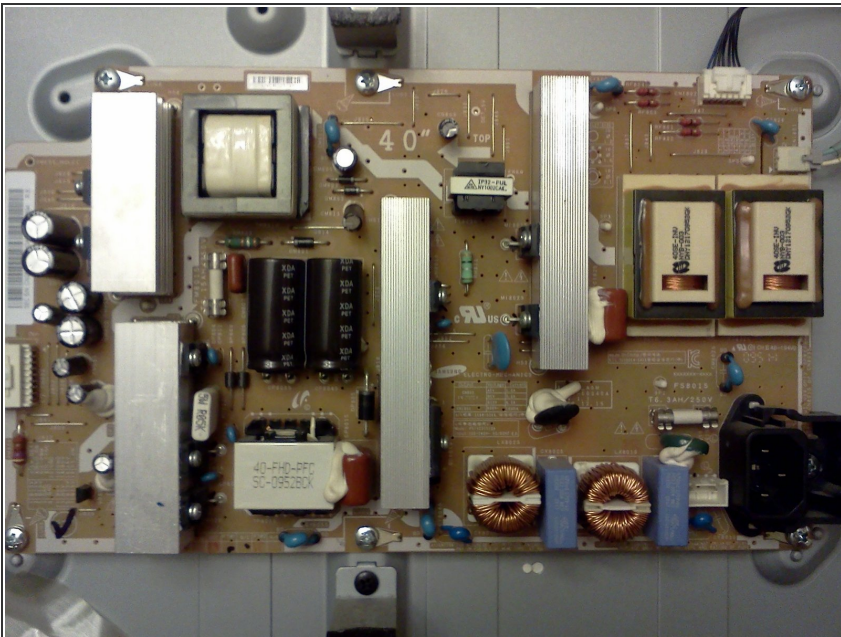
- [Samsung BN44-00340A Power Supply Board](#) (1)
- [1 x Samsung BN96-14770A Main Board](#) (1)

Step 1 — Remove back cover screws



- Be sure to unplug the TV from the main wall outlet.
- Carefully lay the TV screen down on a clean flat table with the back side facing you.
- Using a #3 Phillips head screwdriver, remove the screws holding the back cover on.
- Thoroughly clean the cover and boards using a damp towel (I like to use 91% isopropyl alcohol) and if heavily soiled use a vacuum with a brush.

Step 2 — Remove Power Supply Board



- Using the #3 Phillips head screwdriver, remove the screws holding the power supply board on.
- Unplug the connectors connected to the board setting aside and carefully noting placement for later connection to the new board.

Step 3 — Install the new Power Supply Board



- Insert the new power supply board into the location where the old board was located.
- Follow the previous steps to connect the cables and screw in the screws.

Step 4 — Remove the Main Board



- Using the #3 Phillips head screwdriver, remove the screws holding the main board on.
- Unplug the connectors connected to the board setting aside and carefully noting placement for later connection to the new board.

Step 5 — Install the new Main Board



- Insert the new main board into the location where the old board was located.
- Follow the previous steps to connect the cables and screw in the screws.

Step 6 — Install the back cover



- Follow the first step in reverse to install the back cover.

Step 7 — Power on the TV to test performance



- Plug the power cord into a wall outlet and power on the TV to verify performance.

To reassemble your device, follow these instructions in reverse order.