



Samsung Level Box Mini Speakers Replacement

How to replace the speakers in the Samsung Level Box Mini.

Written By: Amanda Hymer





TOOLS:

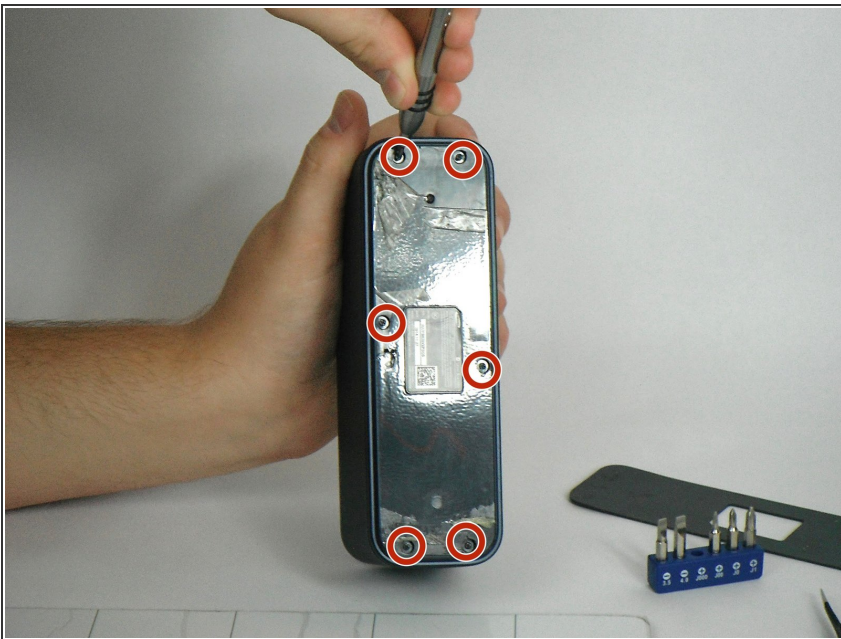
- [Tweezers](#) (1)
 - [iFixit Opening Tools](#) (1)
 - [JIS Driver Set](#) (1)
-

Step 1 — Battery



- Using a plastic opening tool, go around the edges of the rubber bottom. Insert the same tool under the edge of the rubber and swivel side to side. Continue moving it forward while peeling the plastic off with the precision tweezers.

Step 2



- Remove the six 4.5 mm Philips #1 screws from the bottom plate using the Screwdriver J00. Take off the bottom plate.

Step 3



- Using the plastic opening tool, remove the batteries from the device.

Step 4 — Speakers



- Remove the speaker grill from the device.

Step 5



- Remove the six 2.5 mm Philips #2 screws on the front of the device surrounding the speakers using the Screwdriver PH2 Philips Head.

Step 6



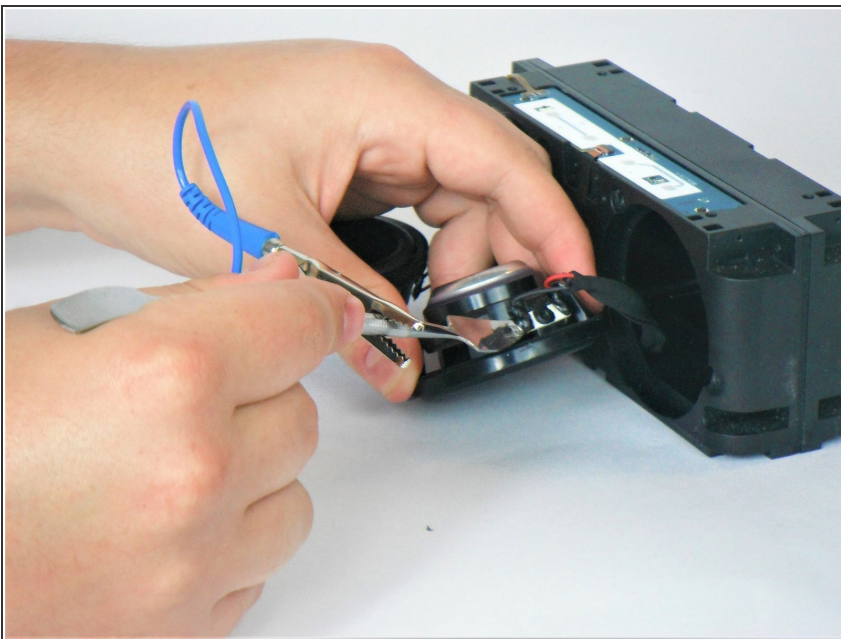
- Remove the eight 1.6 mm Philips #1 screws from the sides, front, and back of the device using the Screwdriver J000 Philips Head.

Step 7



- Gently tap the back of the device to remove the speakers.

Step 8



- Using the anti-static wrist strap and the metal spudger, remove the wires from the speakers.

Step 9



- To put the replacement speakers onto the device, use a soldering tool to solder the wires onto the new speakers.

To reassemble your device, follow these instructions in reverse order.