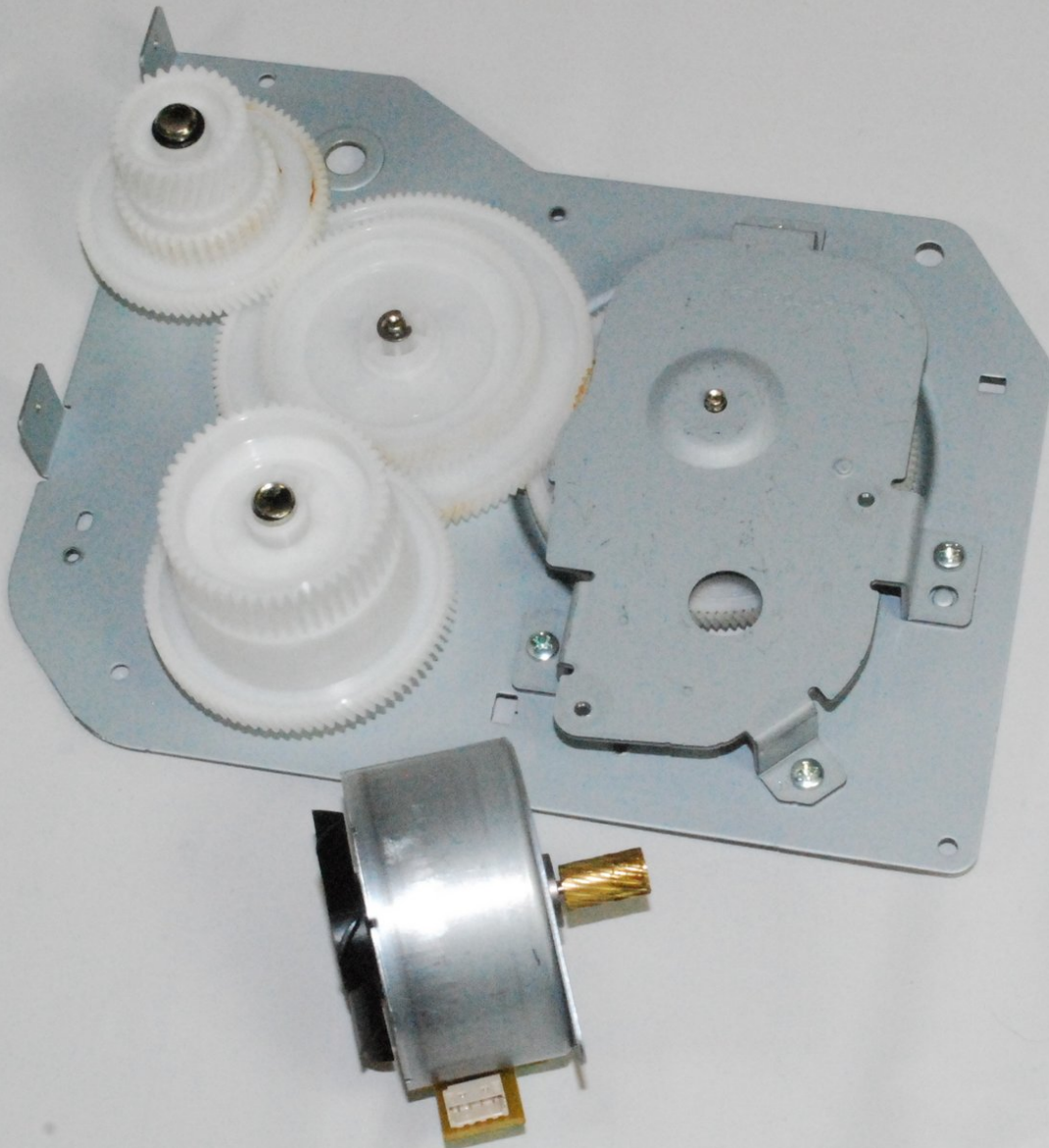




# Samsung ML2510 Motor Replacement

This guide will help you to access and replace the motor for the Samsung ML2510 printer.

Written By: bbaustin



---

## INTRODUCTION

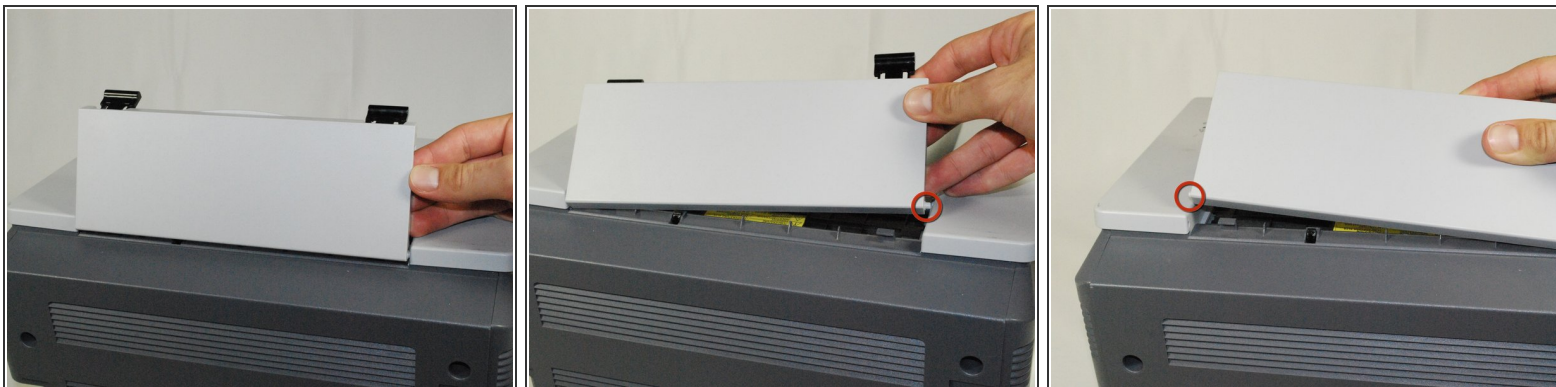
You will be required to disassemble much of the printer and its casing. You will need to refer to the [Removing Samsung ML2510 Back Panel](#) repair guide.

---

### TOOLS:

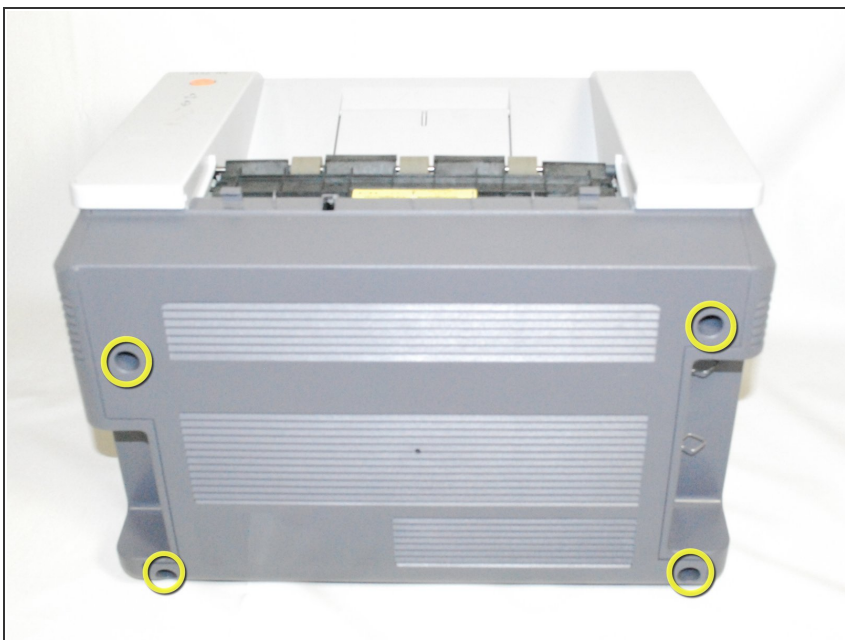
- [Phillips #2 Screwdriver](#) (1)
  - [iFixit Opening Tools](#) (1)
-

## Step 1 — Removing Samsung ML2510 Back Panel



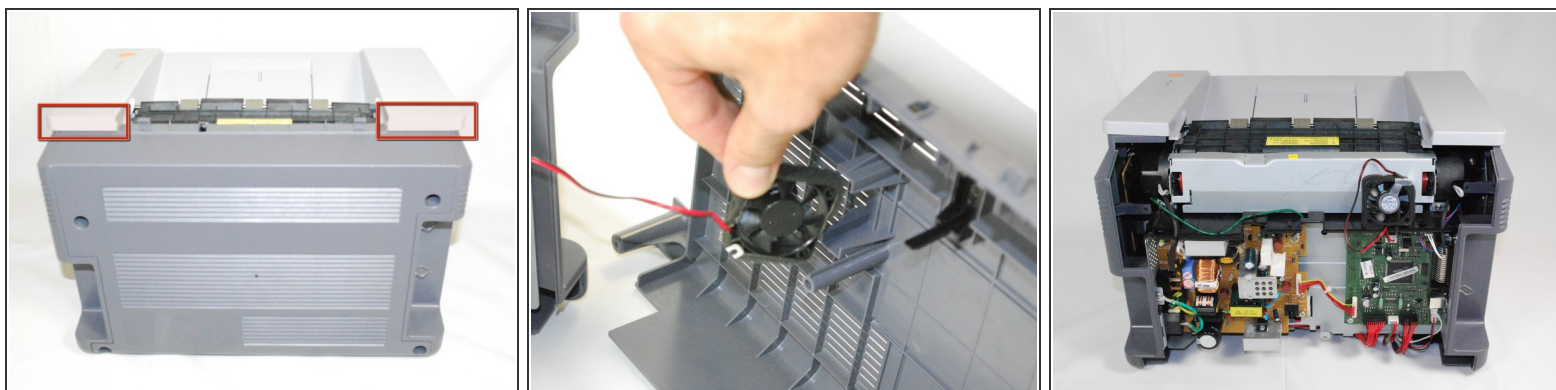
- Remove the hinged top panel by taking the small pins at the bottom of the panel out of their holes.

## Step 2



- Using a Phillips #2 screwdriver, remove the four 1" long, Phillips, PH#2 screws on the back of the printer.

## Step 3



- Gently lift the top panel while simultaneously pulling off the back panel.

⚠ Before pulling out the back panel entirely, make sure to remove the rear cooling fan from its slot.

## Step 4 — Motor



- Remove front panel by gently moving the holes on the panel from the pegs attached to the main printer body, one at a time.

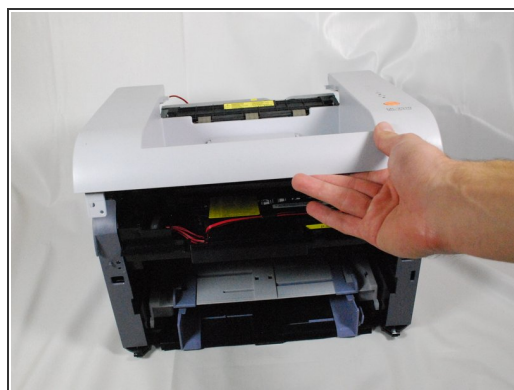


## Step 5



- Using a Phillips #2 screwdriver, remove the two, 1", Phillips, PH#2 screws on the front face of the printer.

## Step 6



- Using a plastic opening tool, gently lift one side of the top panel from its peg.
- Repeat process for the other side.
- Lift the top panel from the front to remove it entirely.

## Step 7



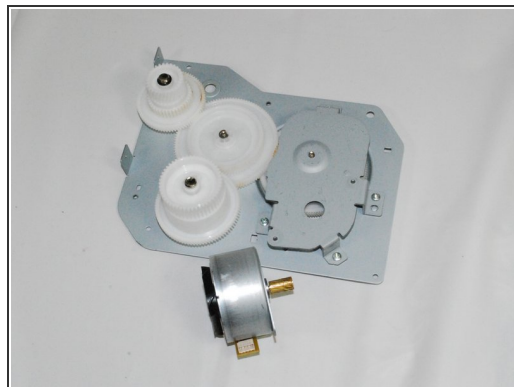
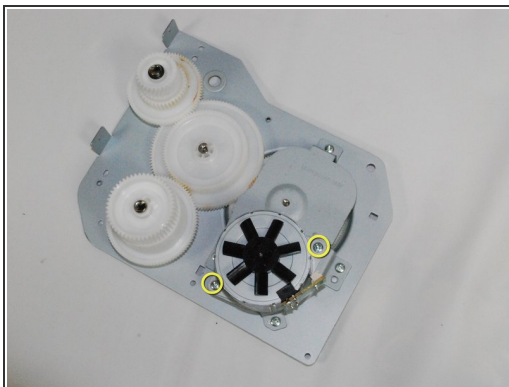
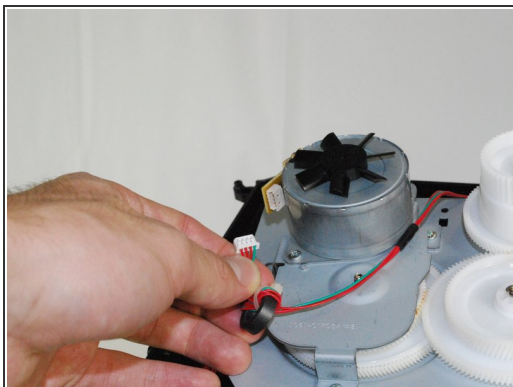
- Lift the left side panel up from the raised stops.
- Gently rotate the panel as indicated in the picture to remove the panel entirely.

## Step 8



- Using a Phillips #2 screwdriver, remove the five, 1", Phillips, PH#2 screws on the side metal panel.
- Remove the two, 1", Phillips, PH#2 screws on the back of the printer.
- Flip over the metal panel to reveal the gear mechanism.

## Step 9



- Remove the cable attached to the motor.
- The entire panel can be removed from the rest of the printer.
- Using a Phillips #2 screwdriver, remove the motor from the panel by removing the two, 1", Phillips, PH#2 screws.
- Replace the motor and reassemble the printer following instructions in reverse order.