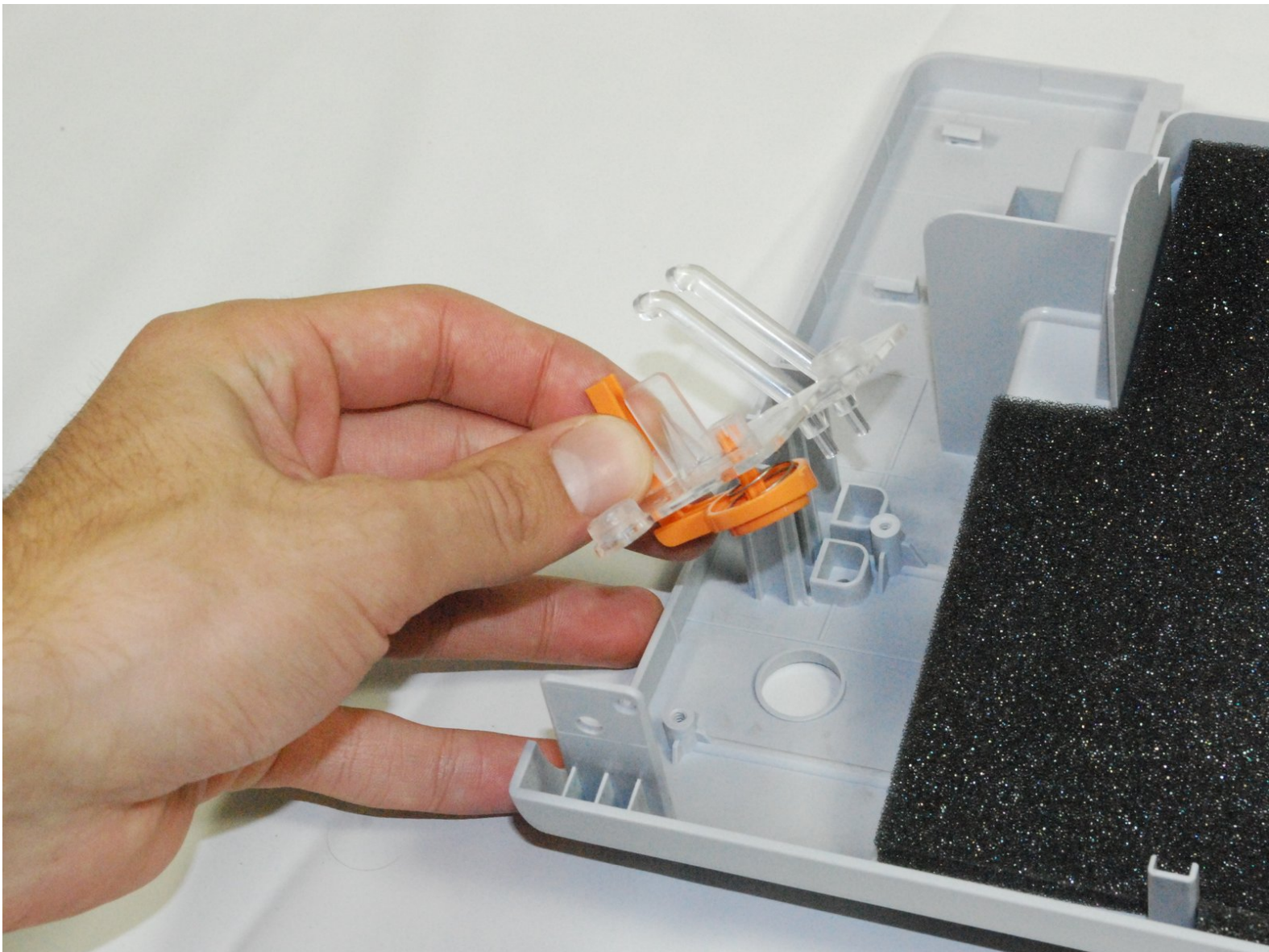




Samsung ML2510 Power Button Replacement

This guide will teach the user to access and replace the power button on the top of the Samsung ML2510 laser printer.

Written By: bbaustin



INTRODUCTION

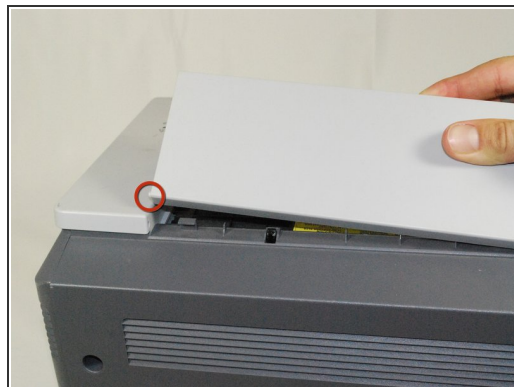
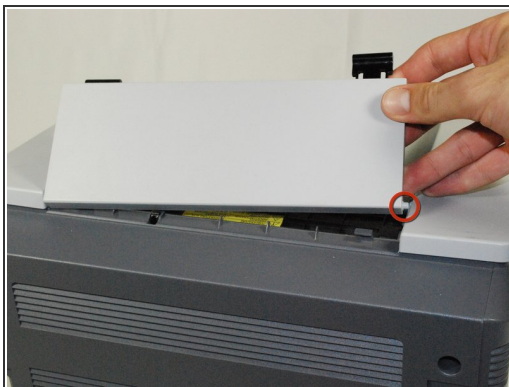
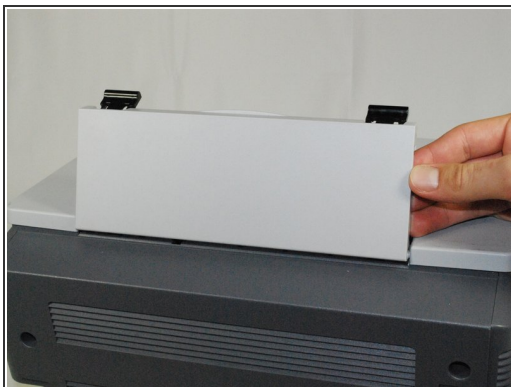
This guide will require the user to disassemble the rear and top panel to access the button.



TOOLS:

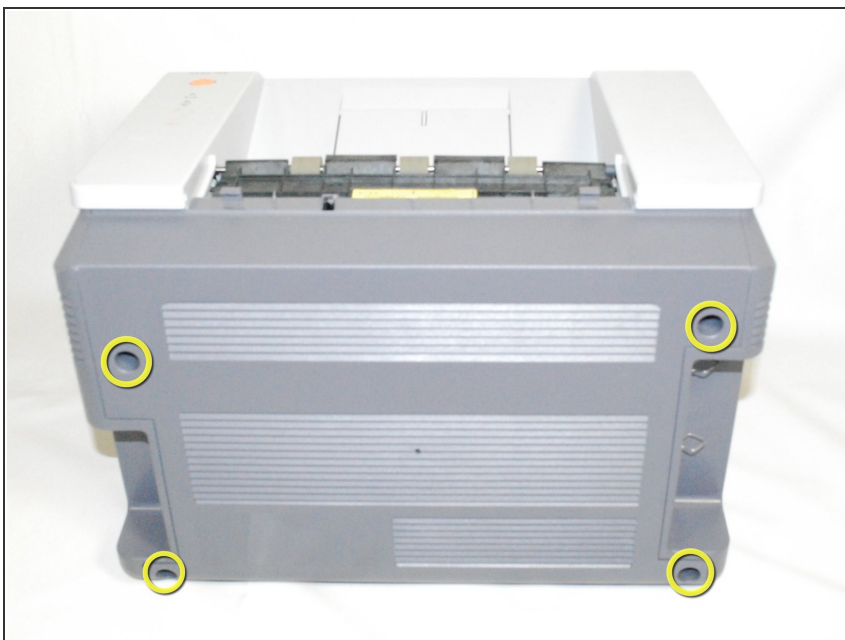
- [iFixit Opening Tools](#) (1)
 - [Phillips #2 Screwdriver](#) (1)
-

Step 1 — Removing Samsung ML2510 Back Panel



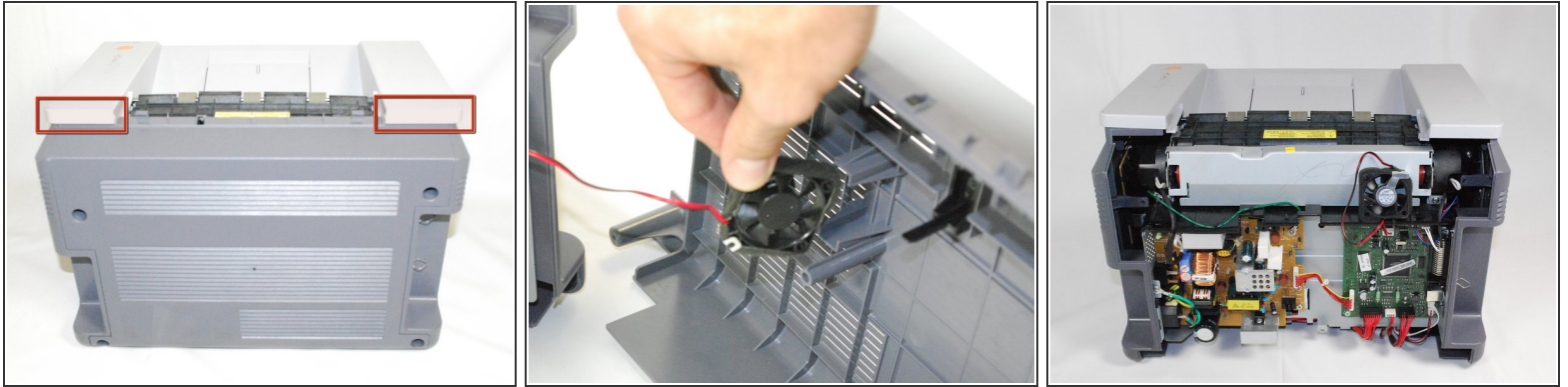
- Remove the hinged top panel by taking the small pins at the bottom of the panel out of their holes.

Step 2



- Using a Phillips #2 screwdriver, remove the four 1" long, Phillips, PH#2 screws on the back of the printer.

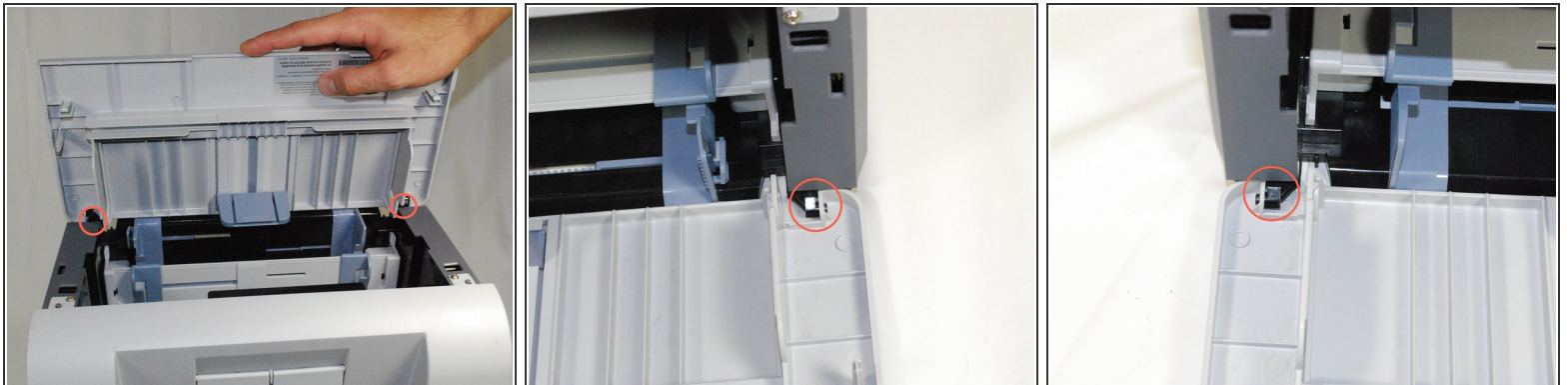
Step 3



- Gently lift the top panel while simultaneously pulling off the back panel.

⚠ Before pulling out the back panel entirely, make sure to remove the rear cooling fan from its slot.

Step 4 — Power Button



- Remove front panel by gently moving the holes on the panel from the pegs attached to the main printer body, one at a time.

Step 5



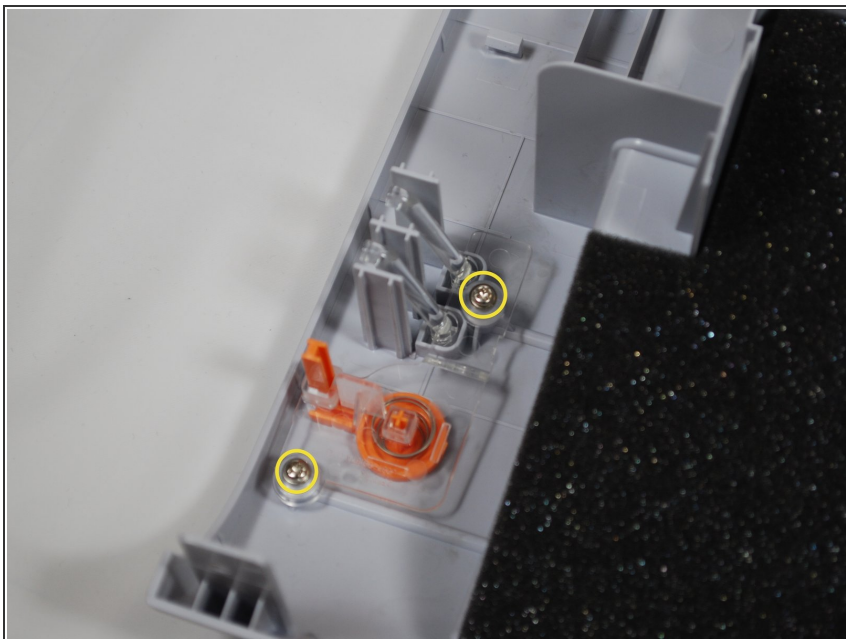
- Using a Phillips #2 screwdriver, remove the two, 1", Phillips, PH#2 screws on the front face of the printer.

Step 6



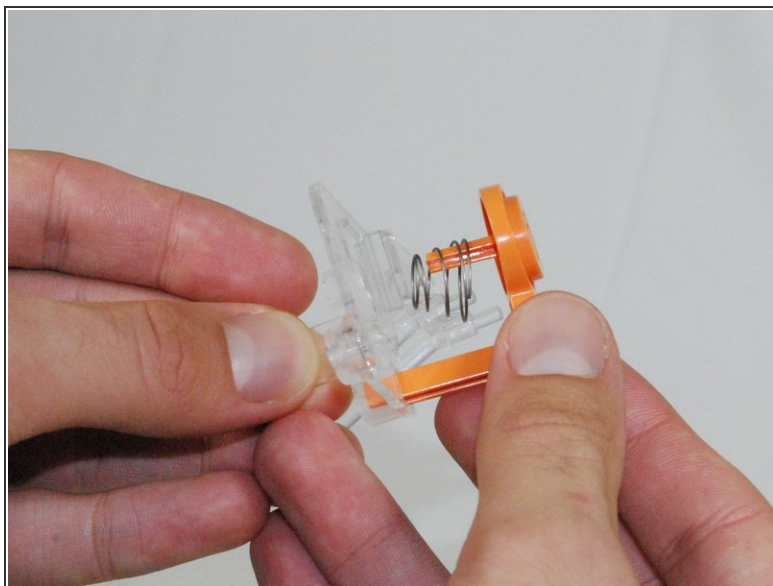
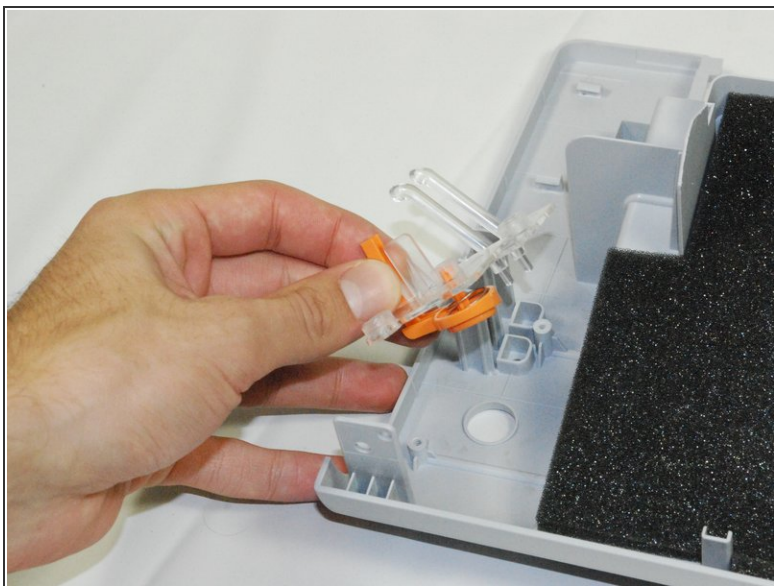
- Using a plastic opening tool, gently lift one side of the top panel from its peg.
- Repeat for the other side.
- Lift the top panel from the front to remove entirely.
- Turn over the top panel to reveal the underside, revealing the button.

Step 7



- Using a Phillips #2 screwdriver, remove the two, 1", Phillips, PH#2 screws from the underside of the top panel

Step 8



- Remove the clear plastic piece and the orange button from the panel.
- Remove the orange button and the spring from the clear plastic piece.
- Replace the button and reassemble the printer following the directions in reverse order.

