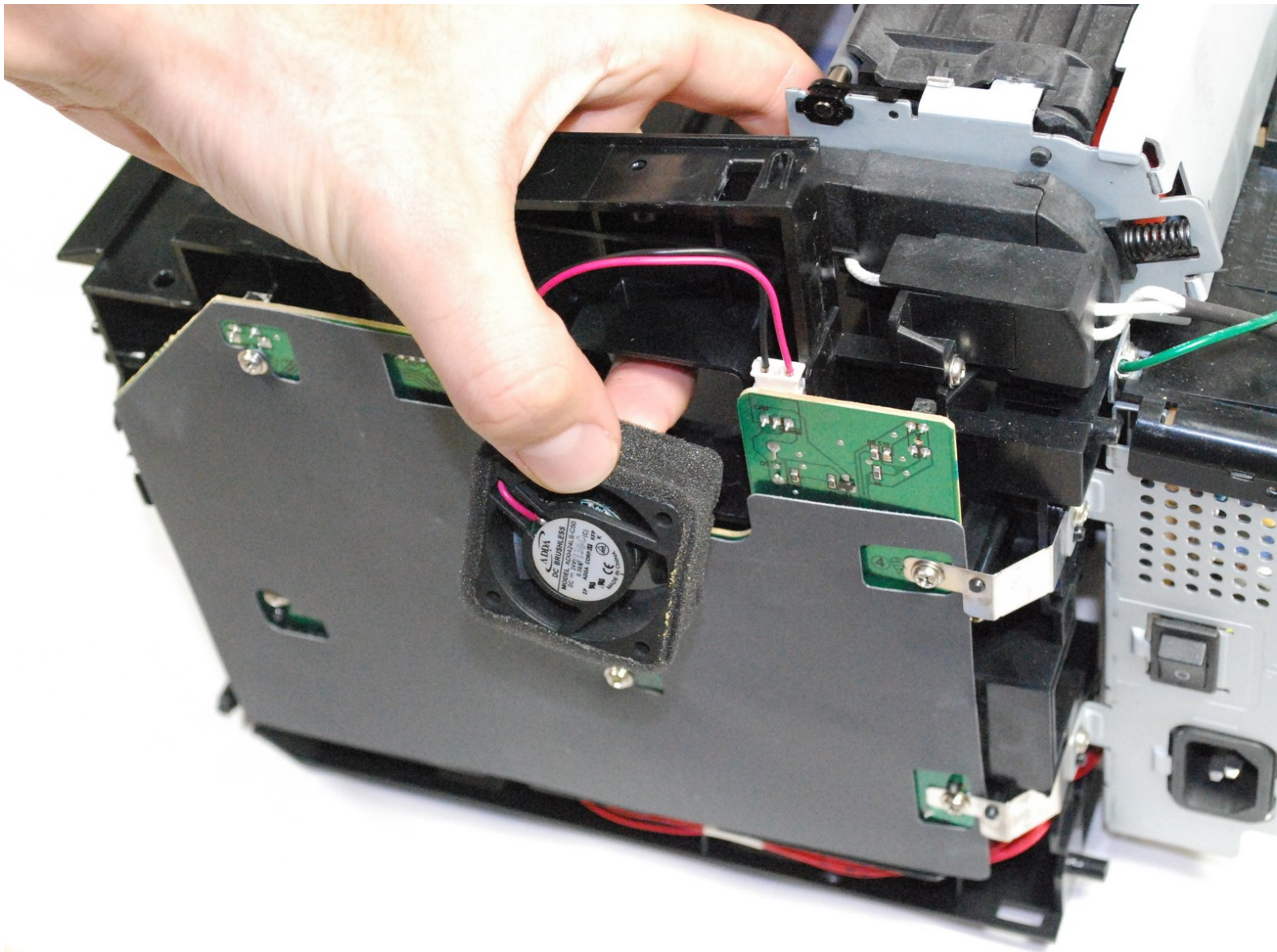




# Samsung ML2510 Side Cooling Fan Replacement

This guide will teach you how to replace the side cooling fan on the Samsung ML2510

Written By: bbaustin



## INTRODUCTION

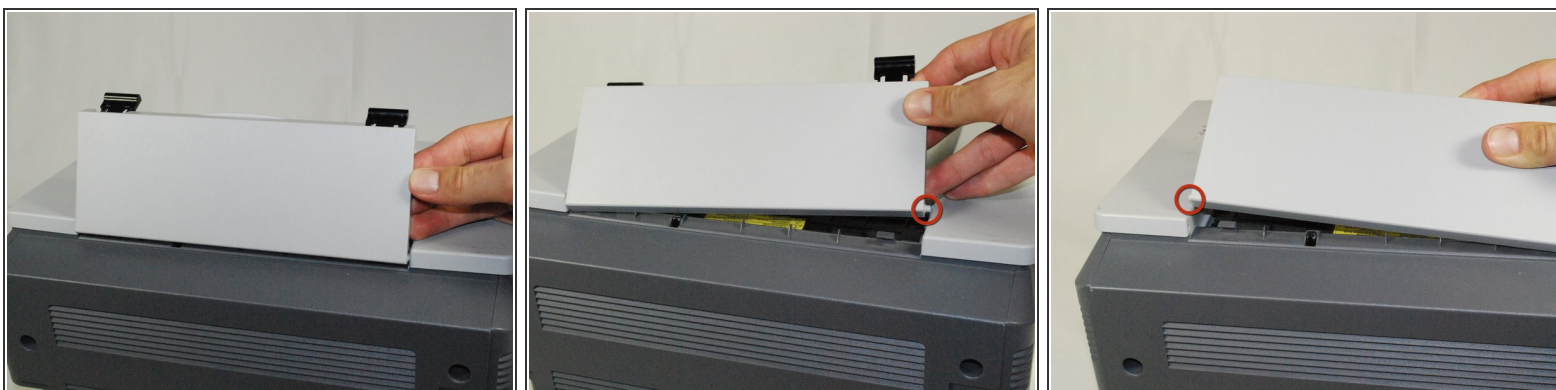
This guide will require you to disassemble the back and side panel of the printer. You will need to refer to the [Removing Samsung ML2510 Back Panel](#) guide in order to complete the task.

---

### TOOLS:

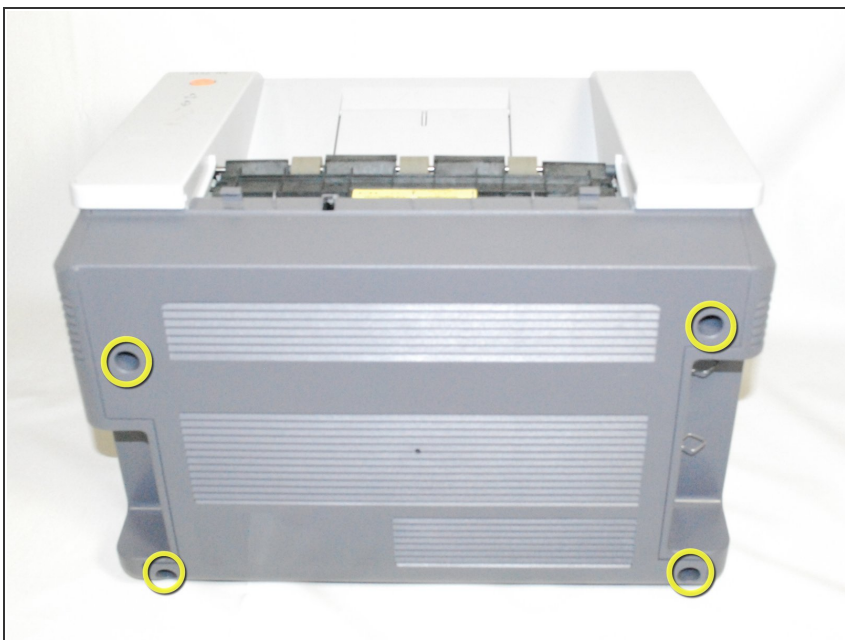
- [Phillips #2 Screwdriver](#) (1)
  - [iFixit Opening Tools](#) (1)
-

## Step 1 — Removing Samsung ML2510 Back Panel



- Remove the hinged top panel by taking the small pins at the bottom of the panel out of their holes.

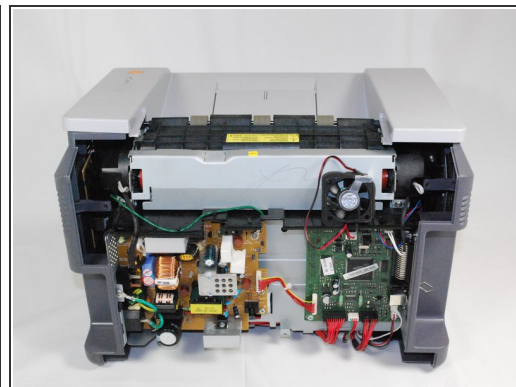
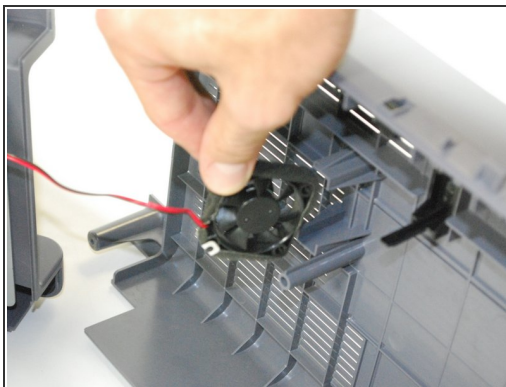
## Step 2



- Using a Phillips #2 screwdriver, remove the four 1" long, Phillips, PH#2 screws on the back of the printer.



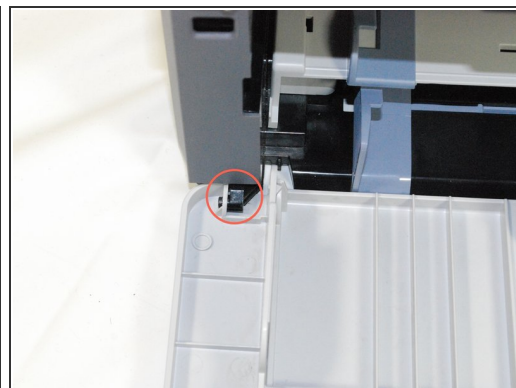
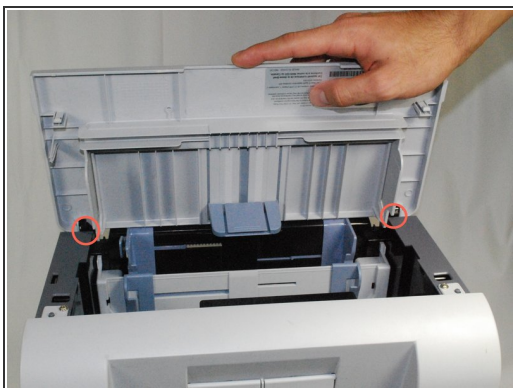
## Step 3



- Gently lift the top panel while simultaneously pulling off the back panel.

⚠ Before pulling out the back panel entirely, make sure to remove the rear cooling fan from its slot.

## Step 4 — Side Cooling Fan



- Locate the holes on the panel that are attached to the main body.
- Remove the front panel by gently moving the holes from the pegs one by one.

## Step 5



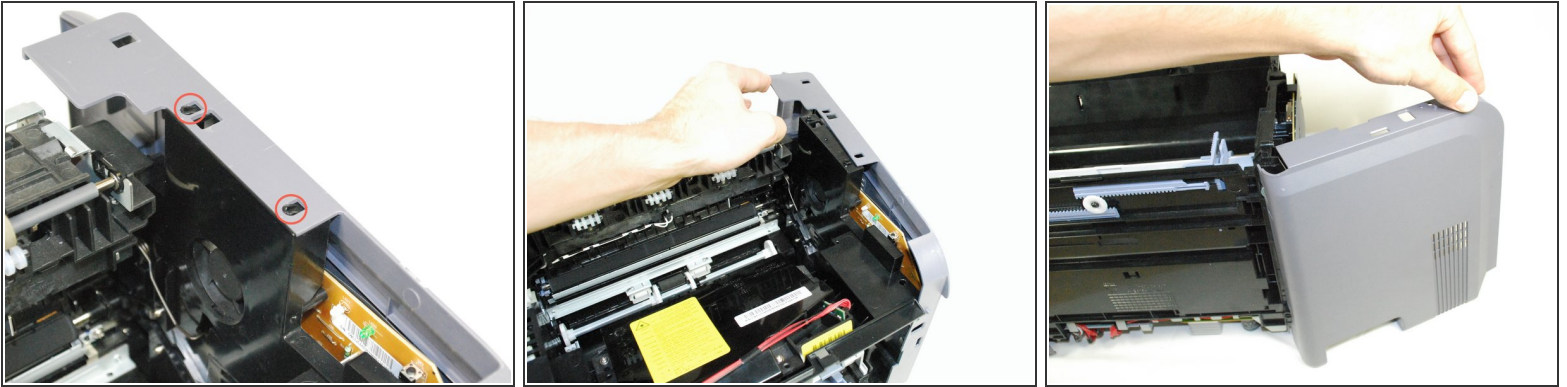
- Using a Phillips #2 screwdriver, remove the two 1" screws on the front face of the printer.

## Step 6



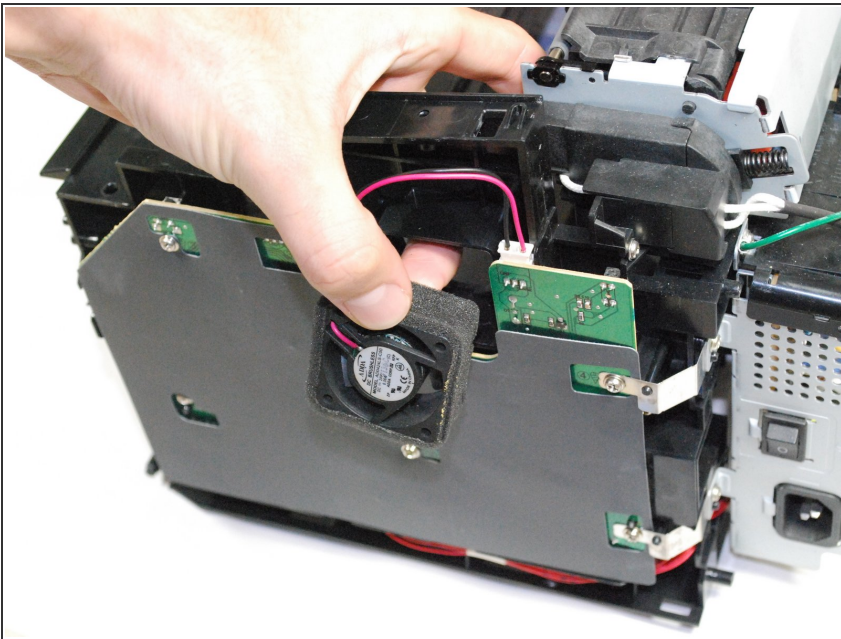
- Using a plastic opening tool, gently lift one side of the top panel from its peg.
- Repeat process for the other side.
- Lift the top panel from the front to remove it entirely.

## Step 7



- Lift the right side-panel up from the raised stops.
- Gently rotate the panel as indicated in the picture to remove the panel entirely.

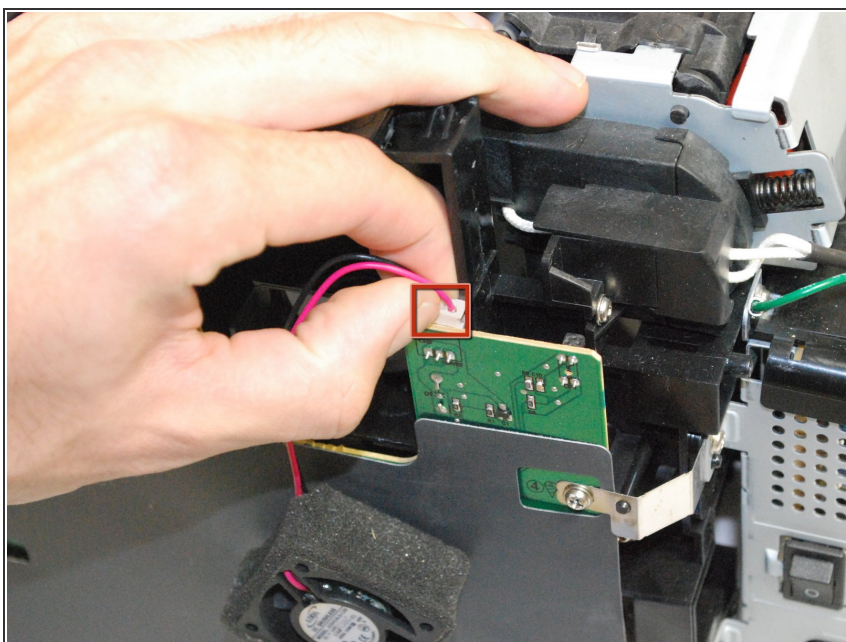
## Step 8



- From the inside of the printer, poke out the side fan.



## Step 9



- Unplug the fan's wires from the side circuit board.
- Replace the fan and reassemble the printer using reverse procedures.

To reassemble your device, follow these instructions in reverse order.