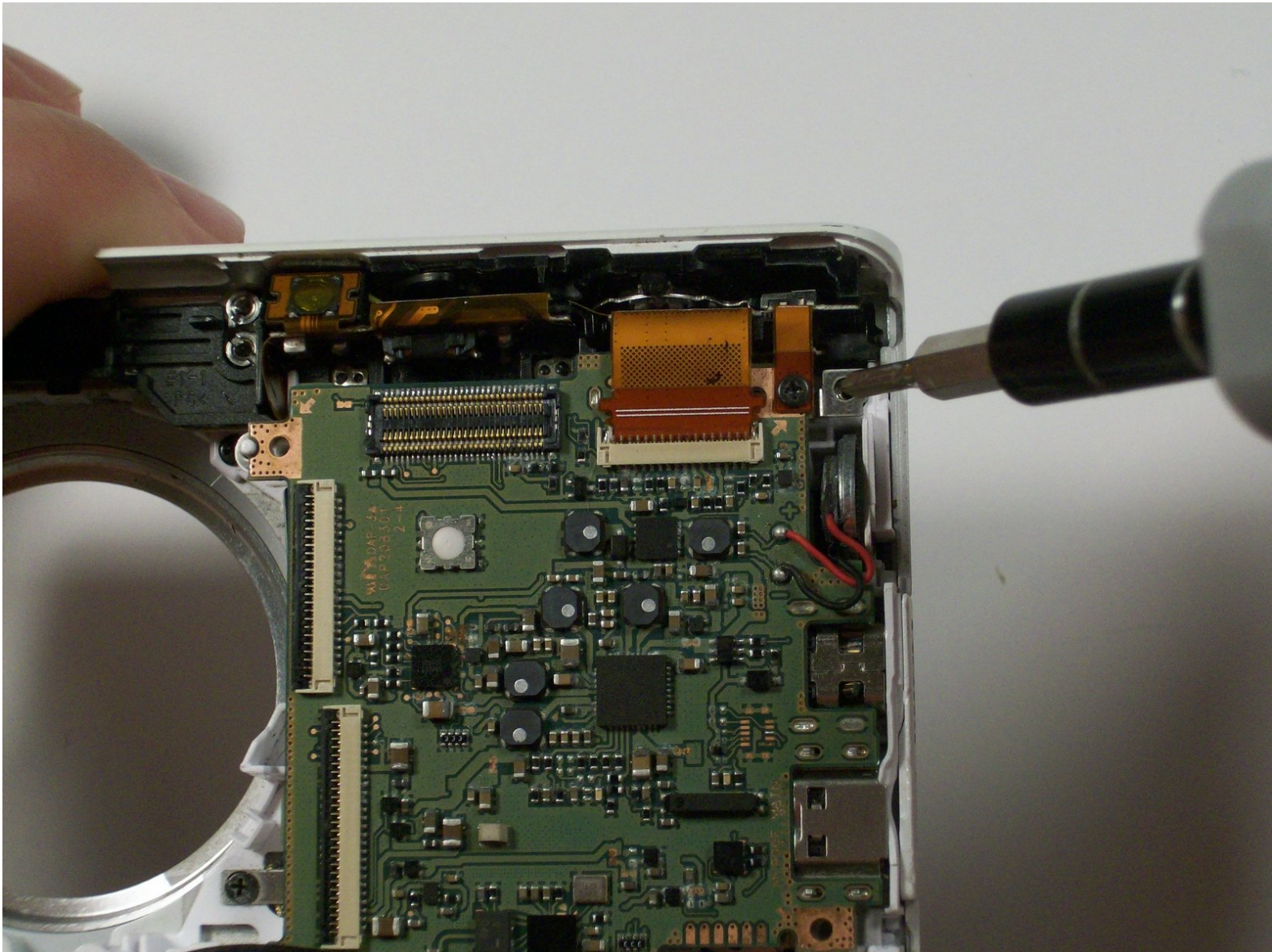




# Samsung MV900F Flash Bulb Assembly Replacement

This guide shows how to replace the Samsung MV900F Flash Bulb Assembly.

Written By: Justin Smith





## TOOLS:

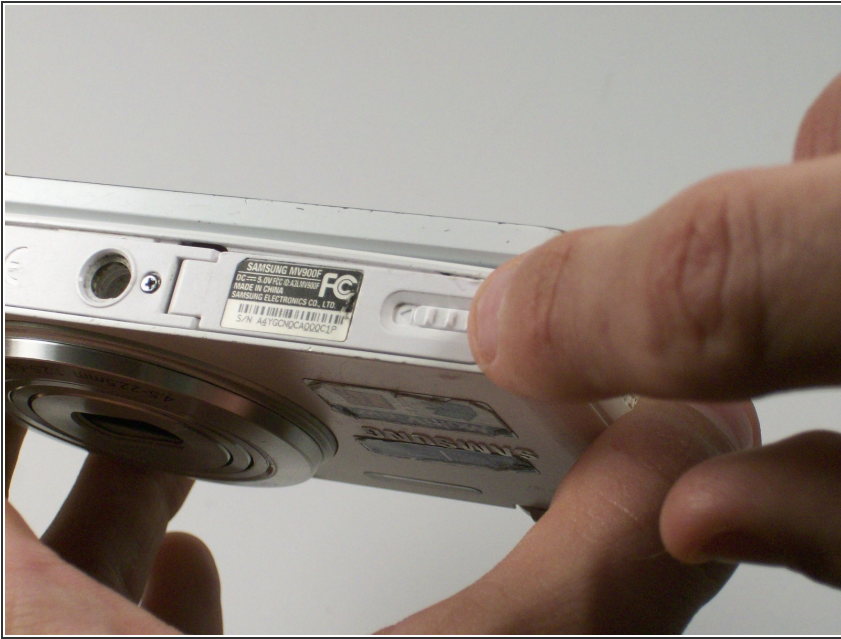
- [Phillips #00 Screwdriver](#) (1)
- [iFixit Opening Tools](#) (1)
- [Tweezers](#) (1)



## PARTS:

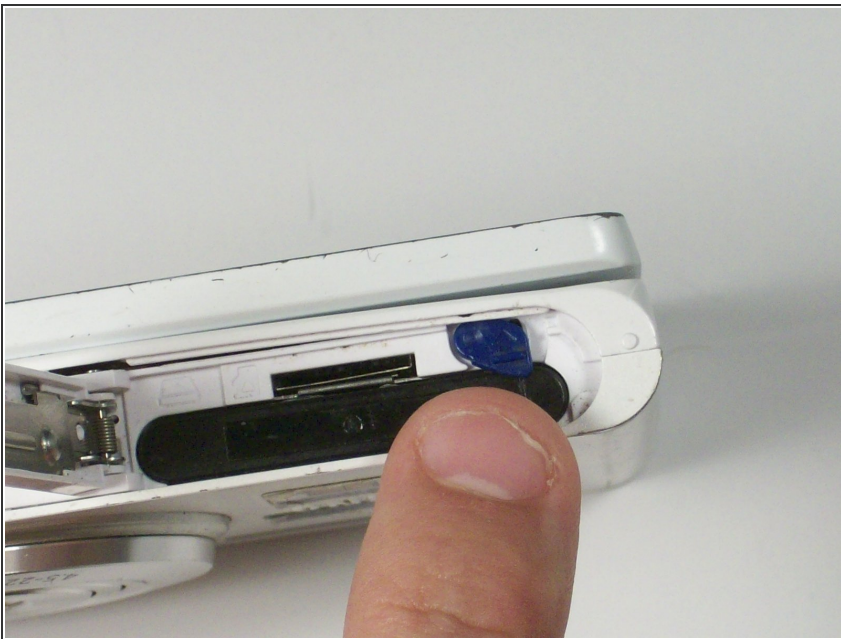
- [Samsung MV900F flash bulb assembly](#) (1)

## Step 1 — Battery



- Slide the lock towards the middle of the camera, in the same direction of the arrow.

## Step 2



- Push the blue battery holder up in the direction of the arrow.

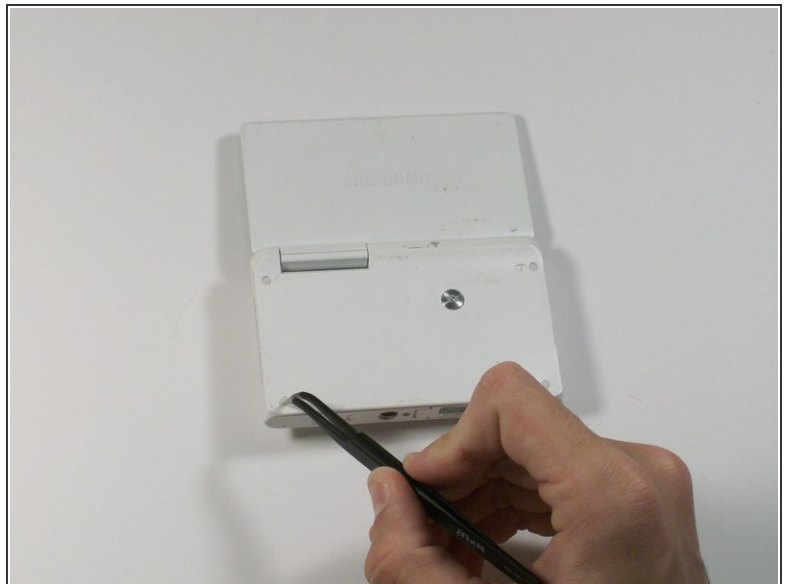
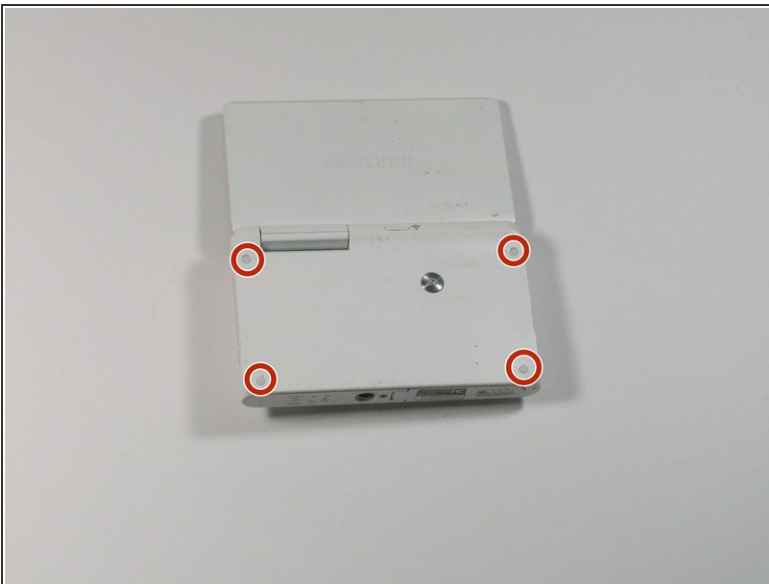


### Step 3



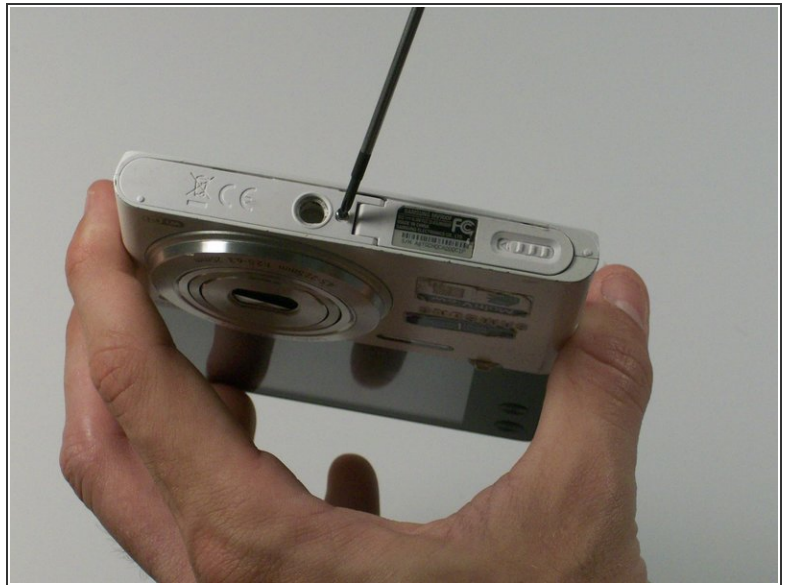
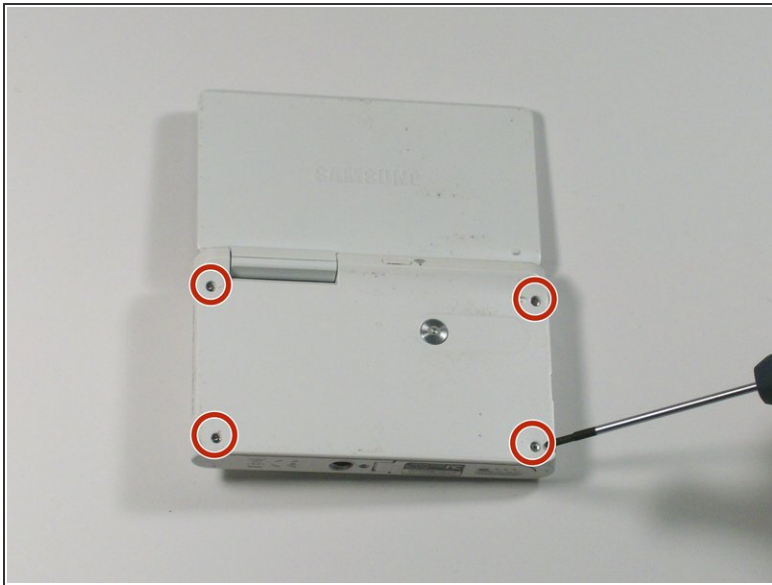
- Pull the battery out of the battery slot.

### Step 4 — Screen



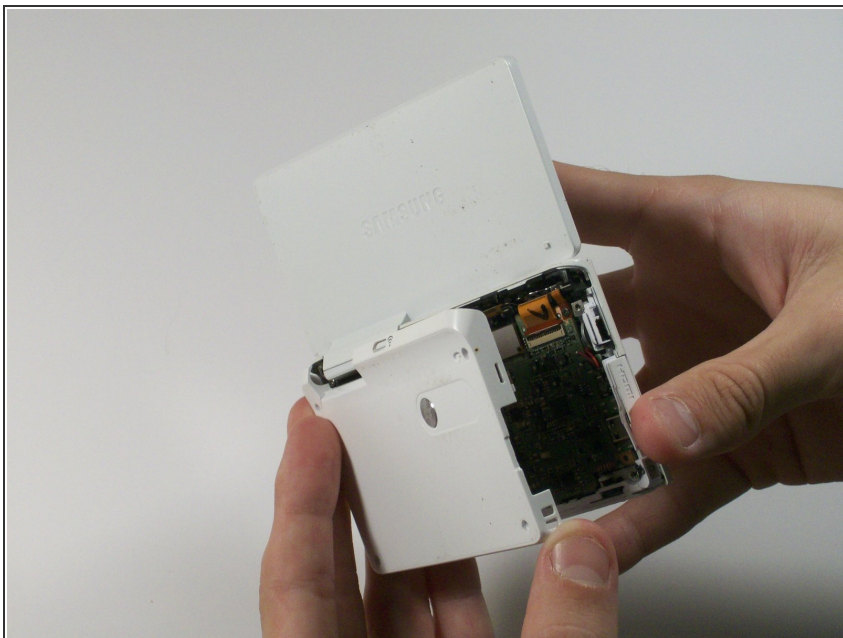
- Use tweezers to remove the four rubber screw covers.

## Step 5



- Remove the four Phillips 2.381 mm screws on back side of camera and one Phillips 2.381 mm screw on the bottom of the camera, using a Phillips #00 screwdriver.

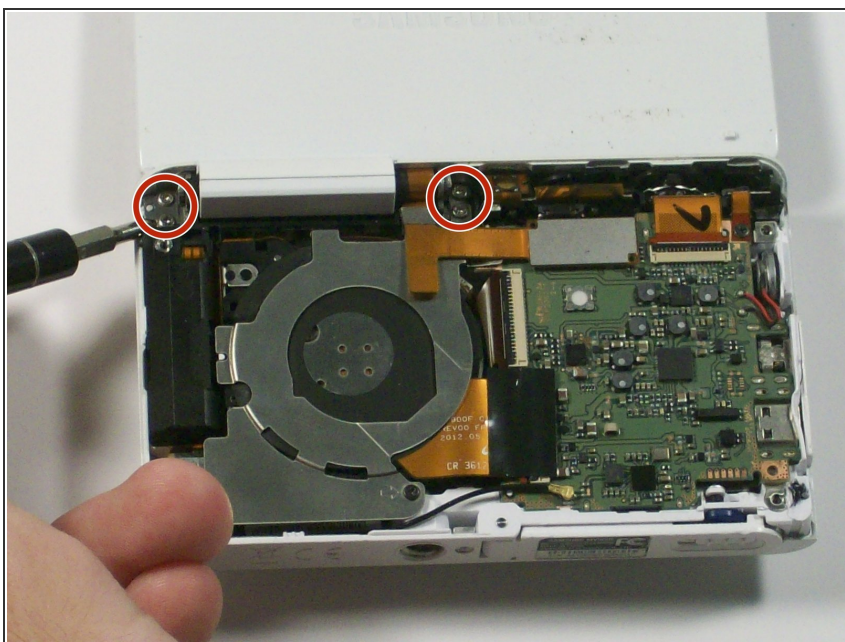
## Step 6



- Remove the back casing by just carefully pulling the casing off of the camera.

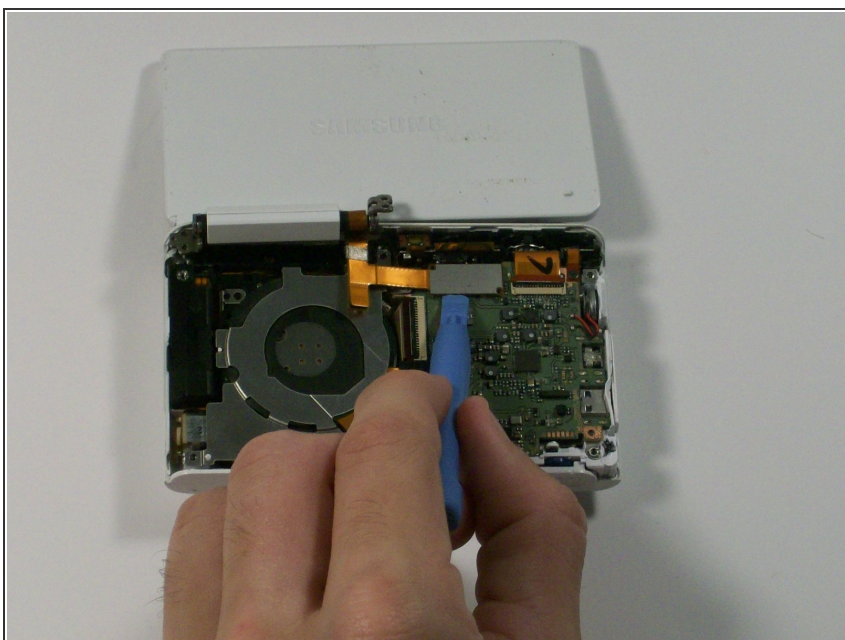


## Step 7



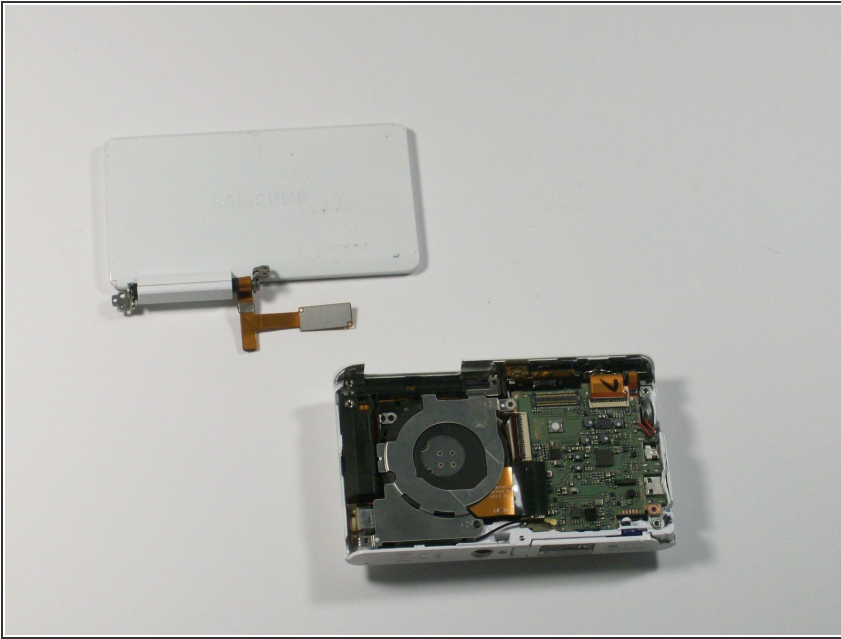
- Use the Phillips #00 screw driver to remove the four 2.381 mm screws next to the screen hinge.

## Step 8



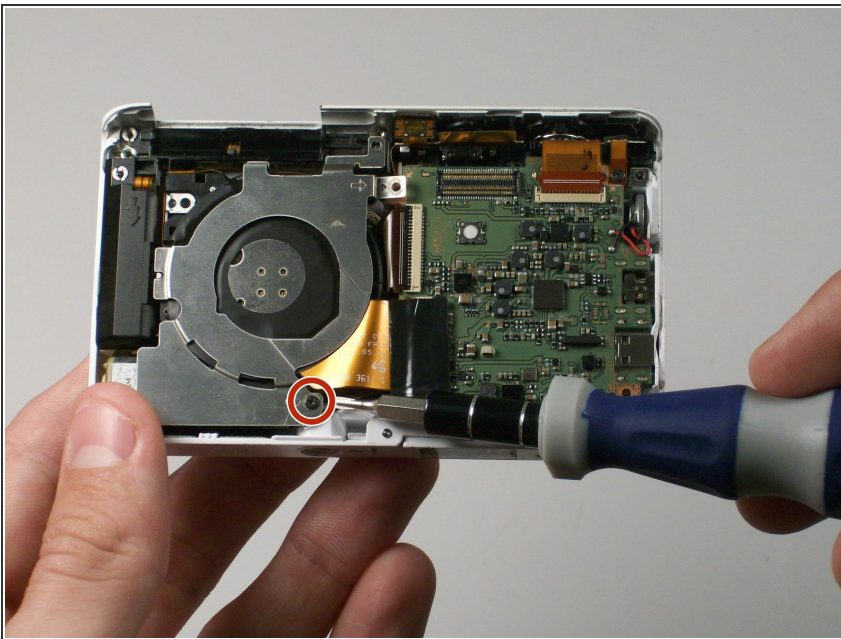
- Use plastic opening tool to disconnect screen connector from the control board.

## Step 9



- Remove the old screen.

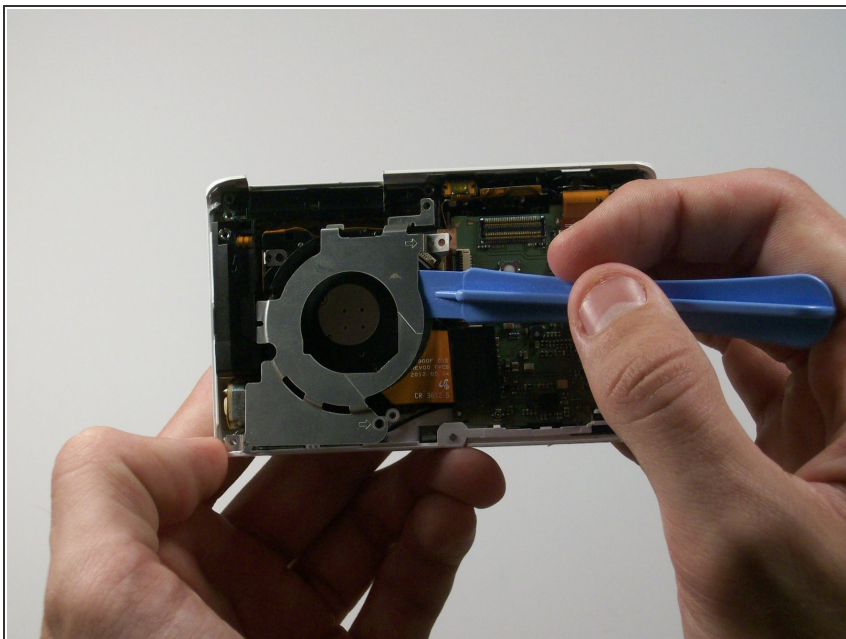
## Step 10 — Lens Assembly



- Remove the 2.381 mm screw with a Phillips #00 screwdriver.

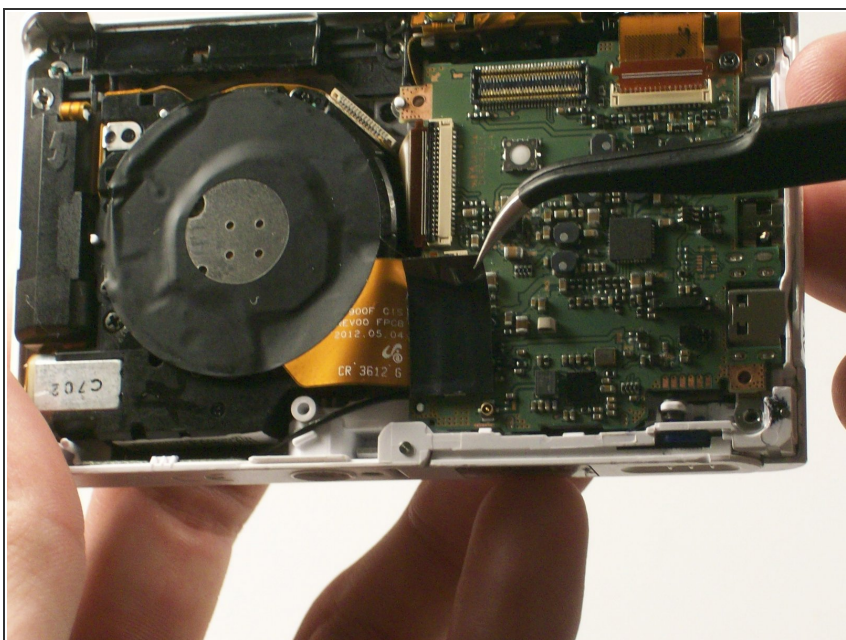


## Step 11



- Use the plastic opening tool to remove the silver metal lens cover.

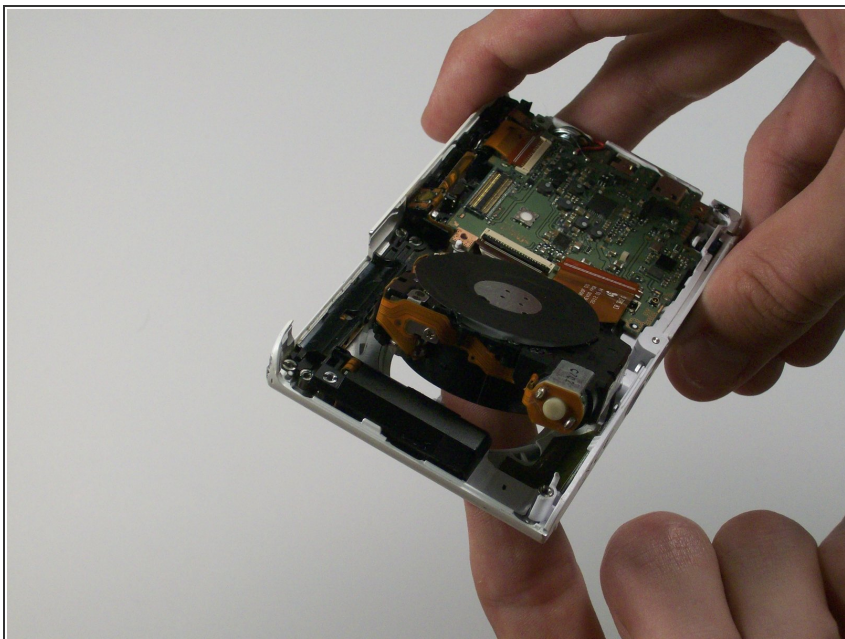
## Step 12



- Use the tweezers to remove the black electrical tape covering the copper connector to the control board.

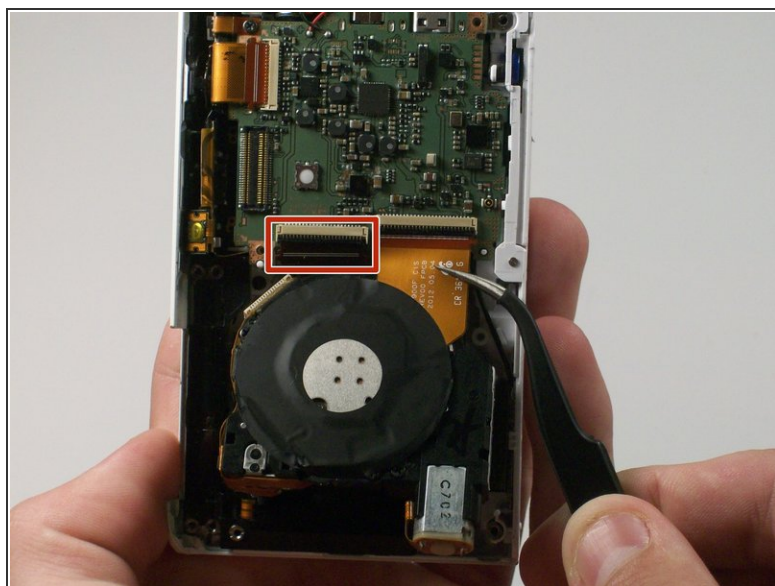
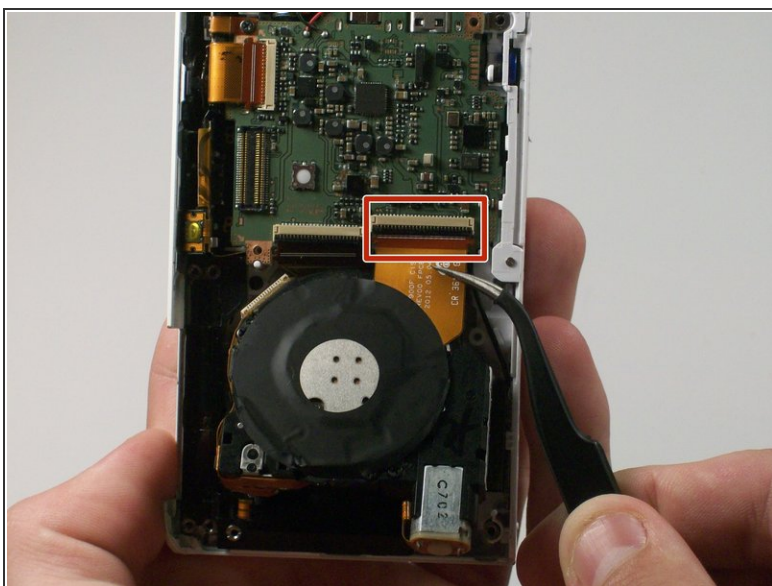


## Step 13



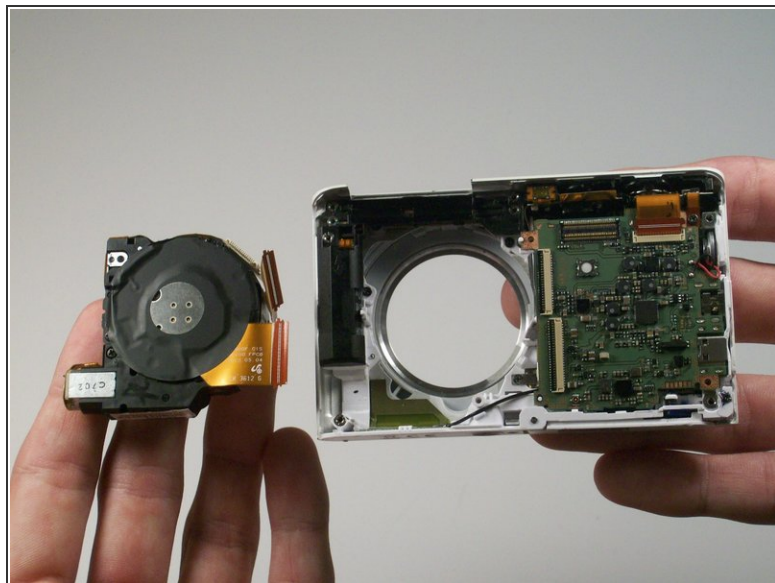
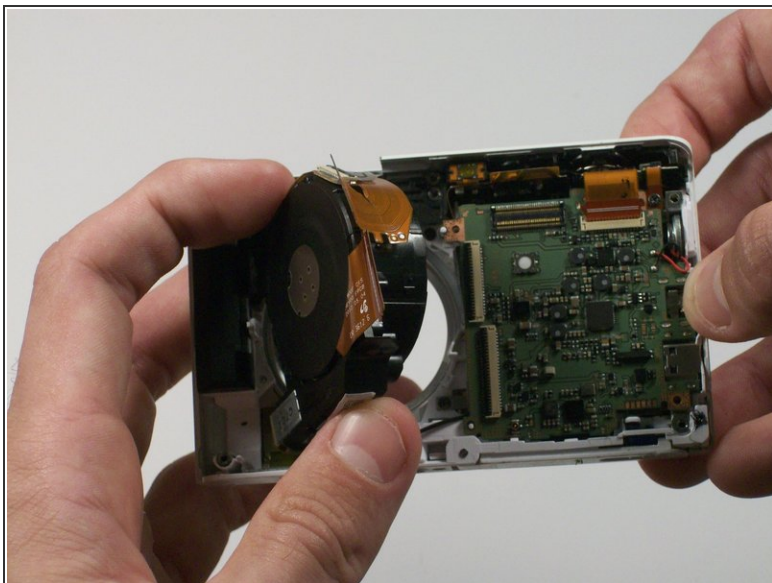
- From the front of the camera, push the lens through the back of the camera.

## Step 14



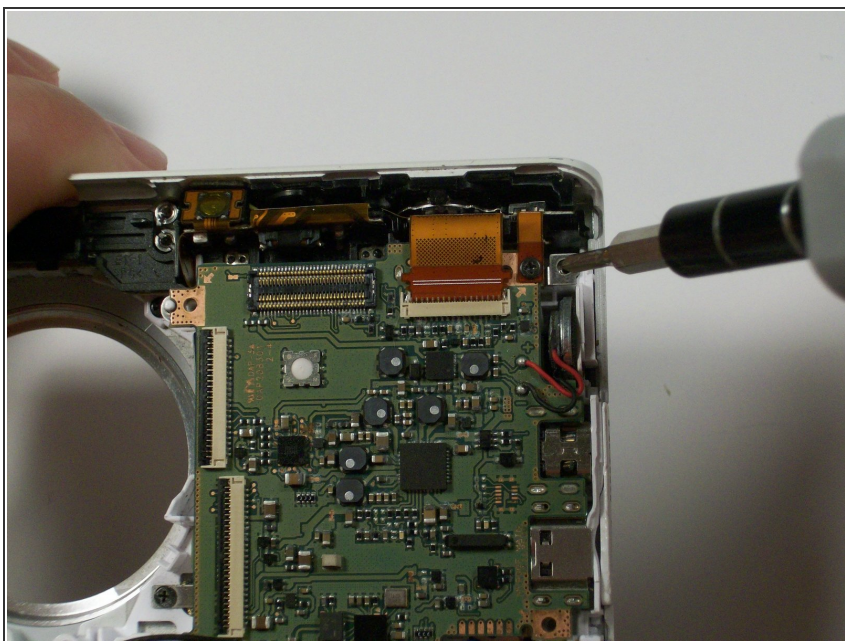
- Use a pair of tweezers to flip up the black retaining bar on each of the two ZIF connectors.

## Step 15



- Remove the lens assembly from the camera.

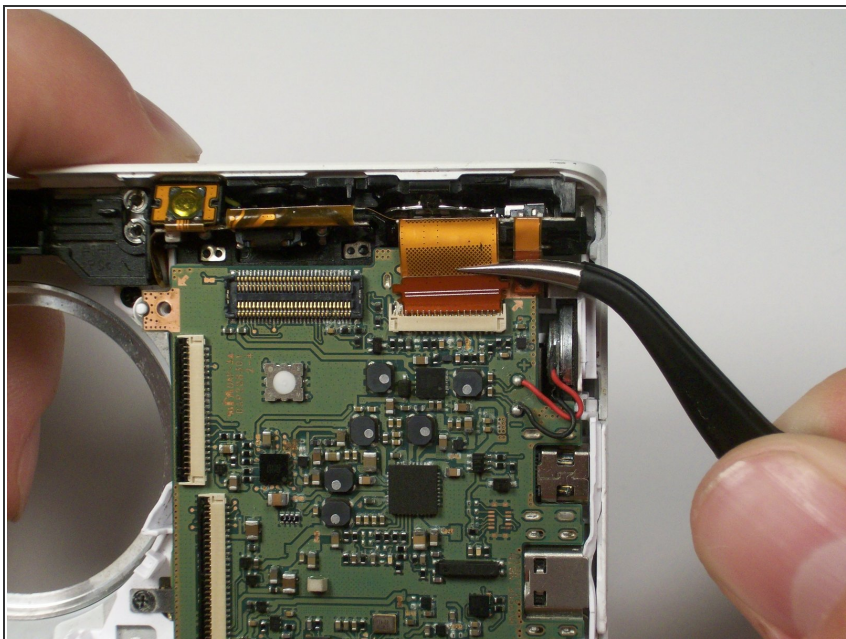
## Step 16 — Flash Bulb Assembly



- Remove the 2.381 mm screw that is holding the copper to the control board with a Phillips #00 screw driver.

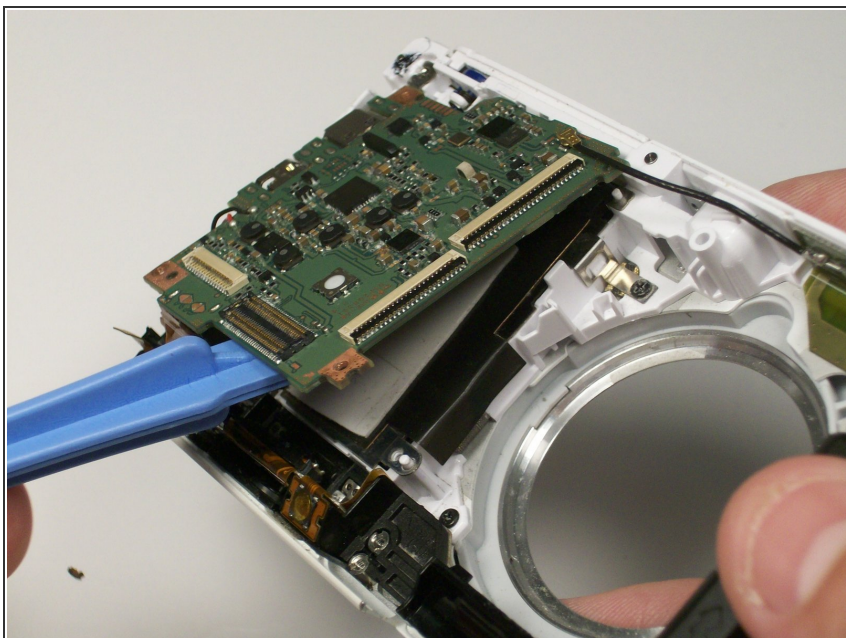


## Step 17



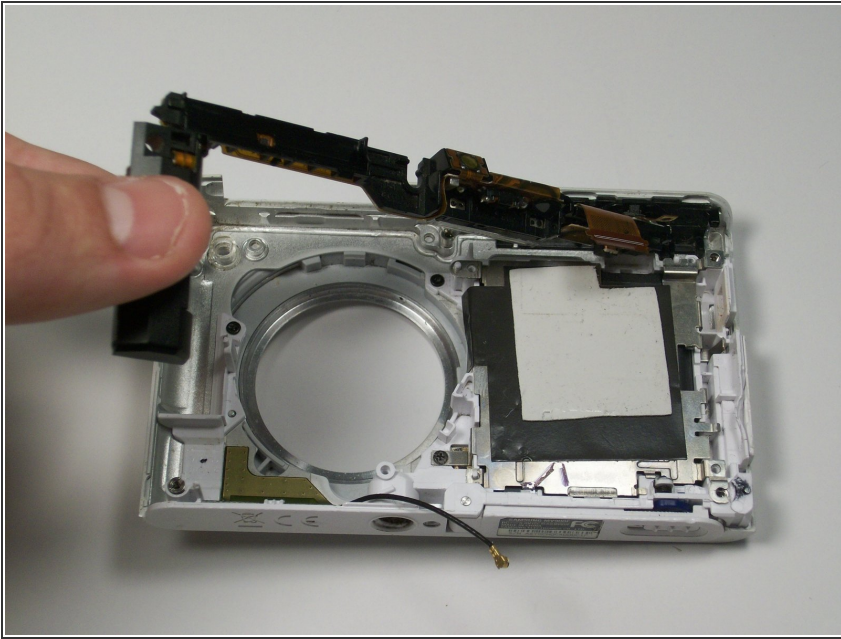
- Use tweezers to pull copper connector from the control board.

## Step 18



- Use the plastic opening tool to pry the control board up, thus allowing the flash bulb assembly to be removed.

## Step 19



- Beginning with the battery on the side, gently pull upwards to remove the entire flash bulb assembly.

To reassemble your device, follow these instructions in reverse order.