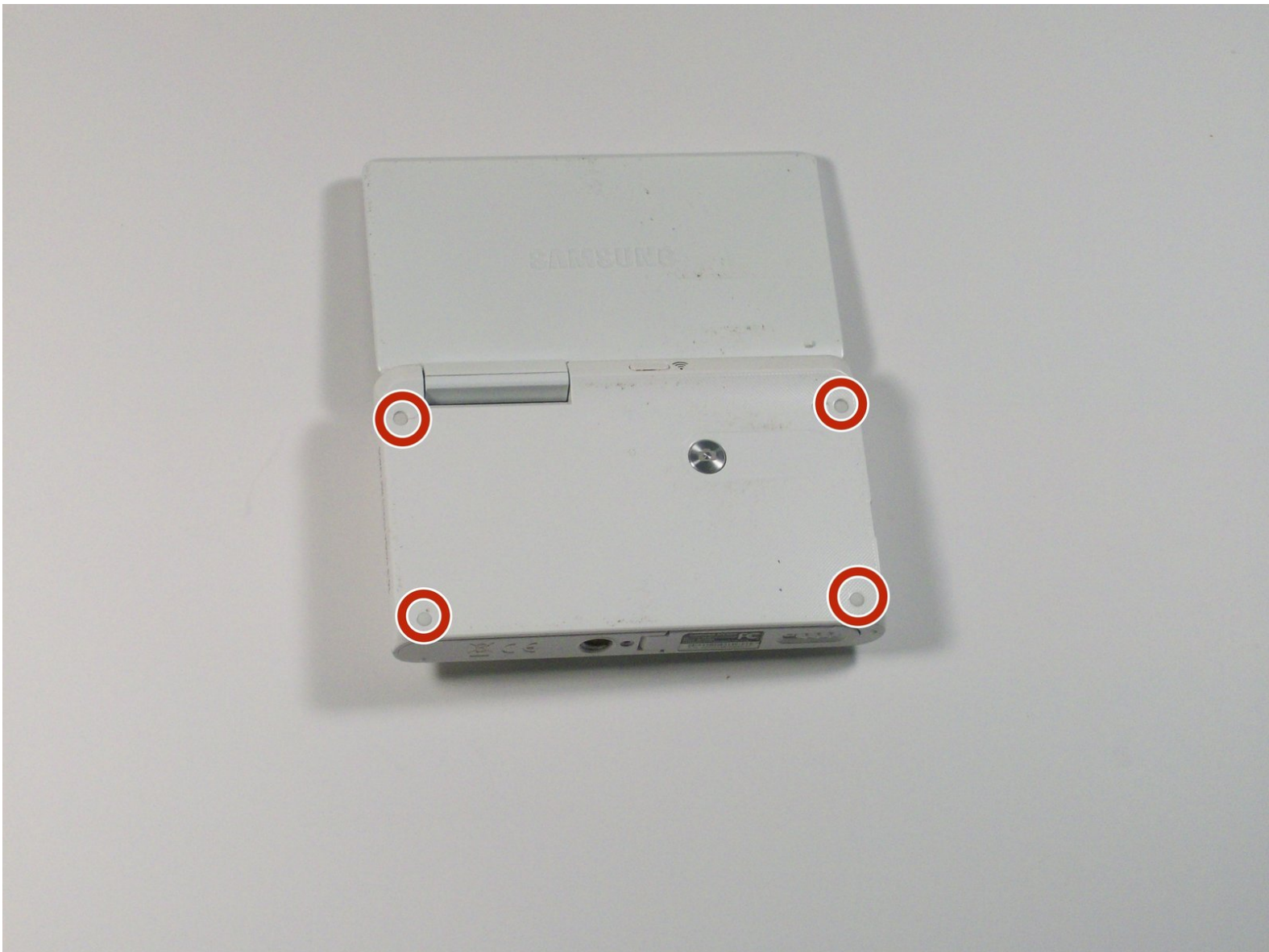




# Samsung MV900F Screen Replacement

This guide will demonstrate how to replace the screen on a Samsung MV900F, through eight easy steps.

Written By: Ethan Rowland



# INTRODUCTION

This guide will demonstrate eight steps on how to replace the flip screen on a Samsung MV900F Smart Camera.



## TOOLS:

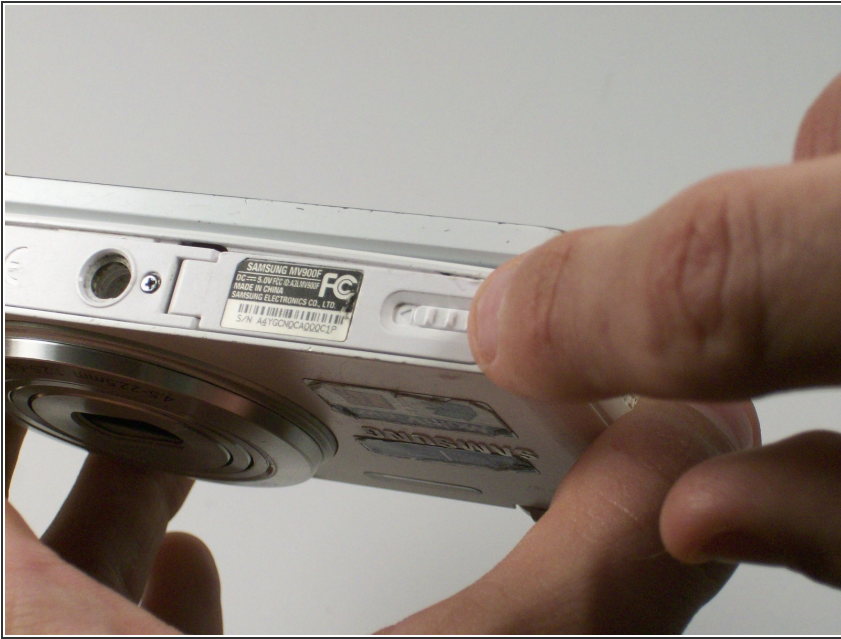
- [Phillips #00 Screwdriver](#) (1)
- [Tweezers](#) (1)
- [iFixit Opening Tools](#) (1)



## PARTS:

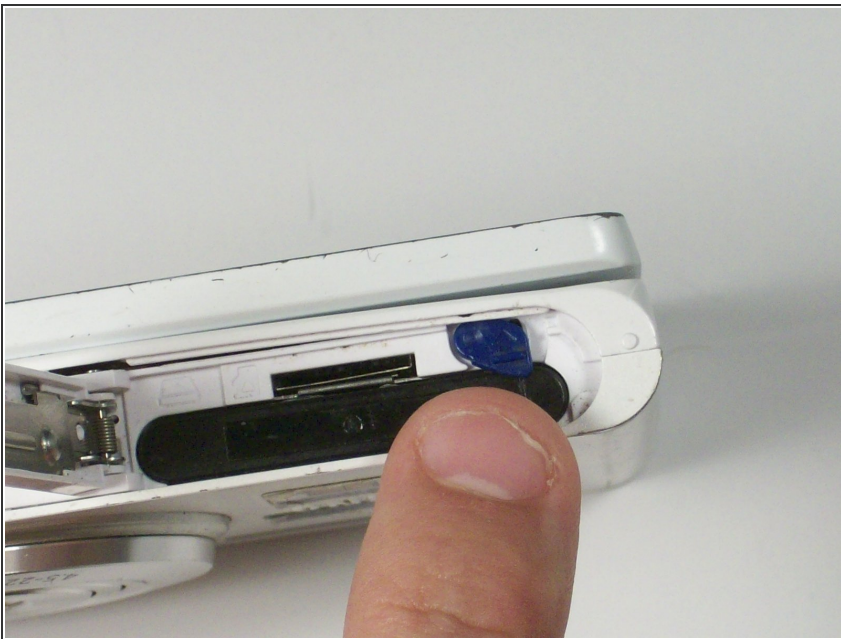
- [Samsung MV900F Screen](#) (1)

## Step 1 — Battery



- Slide the lock towards the middle of the camera, in the same direction of the arrow.

## Step 2



- Push the blue battery holder up in the direction of the arrow.

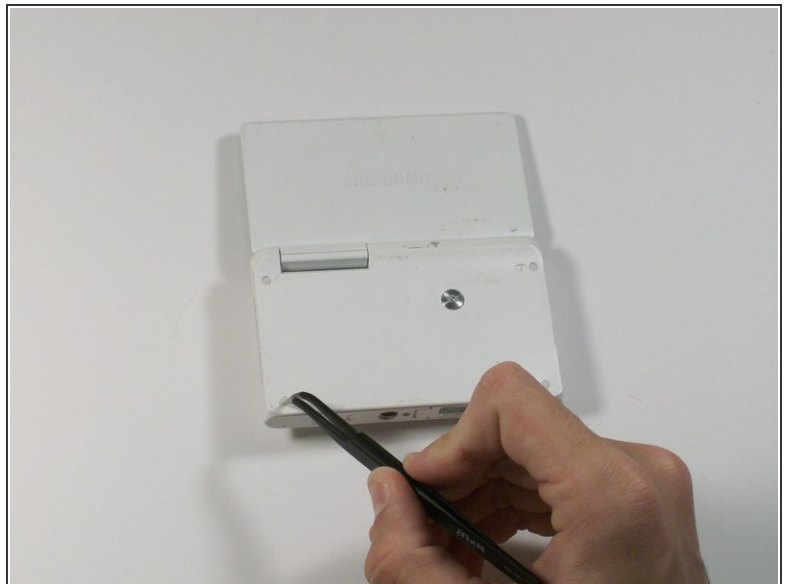
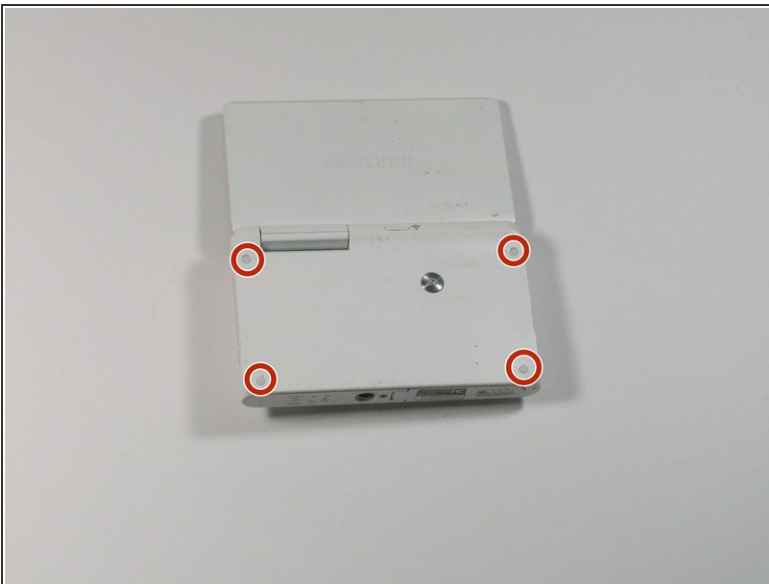


### Step 3



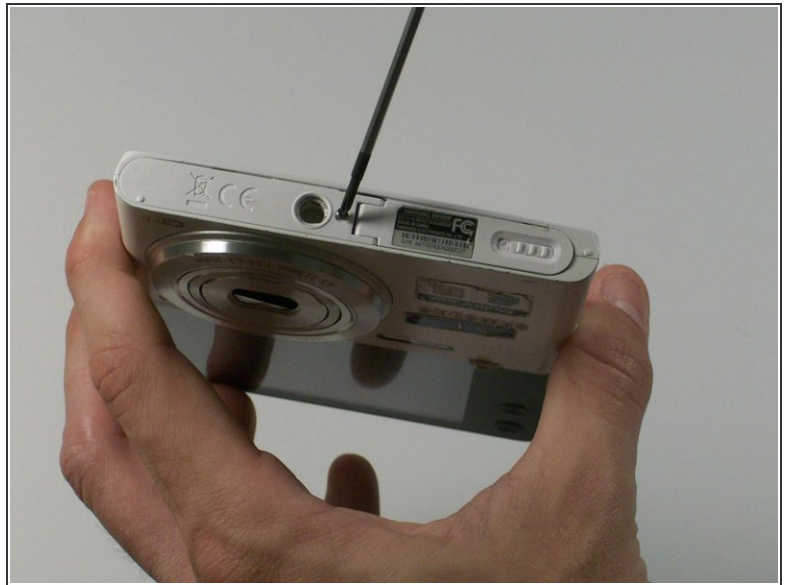
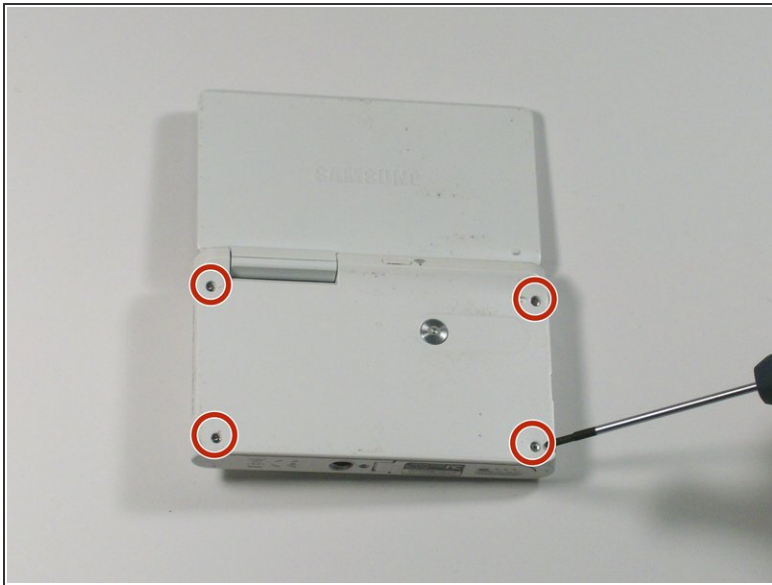
- Pull the battery out of the battery slot.

### Step 4 — Screen



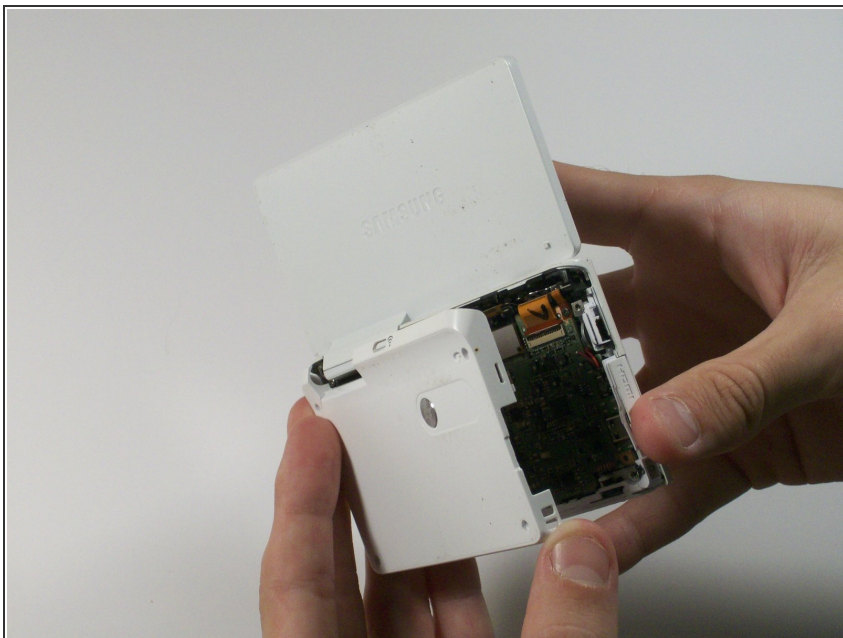
- Use tweezers to remove the four rubber screw covers.

## Step 5



- Remove the four Phillips 2.381 mm screws on back side of camera and one Phillips 2.381 mm screw on the bottom of the camera, using a Phillips #00 screwdriver.

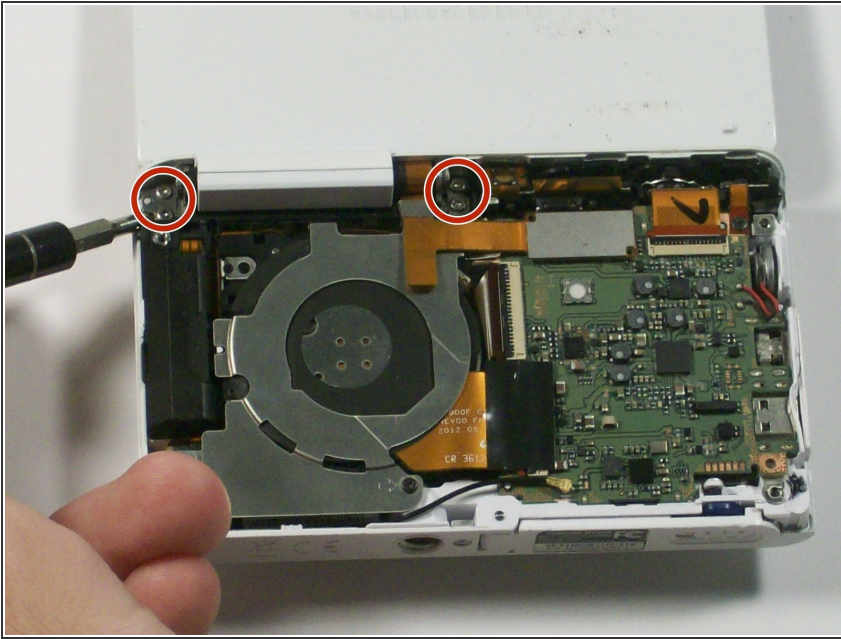
## Step 6



- Remove the back casing by just carefully pulling the casing off of the camera.

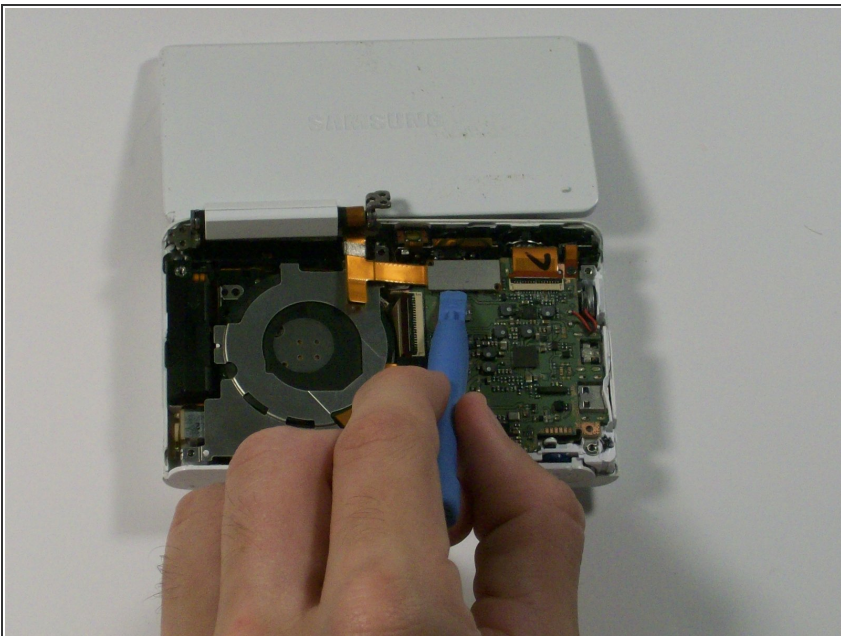


## Step 7



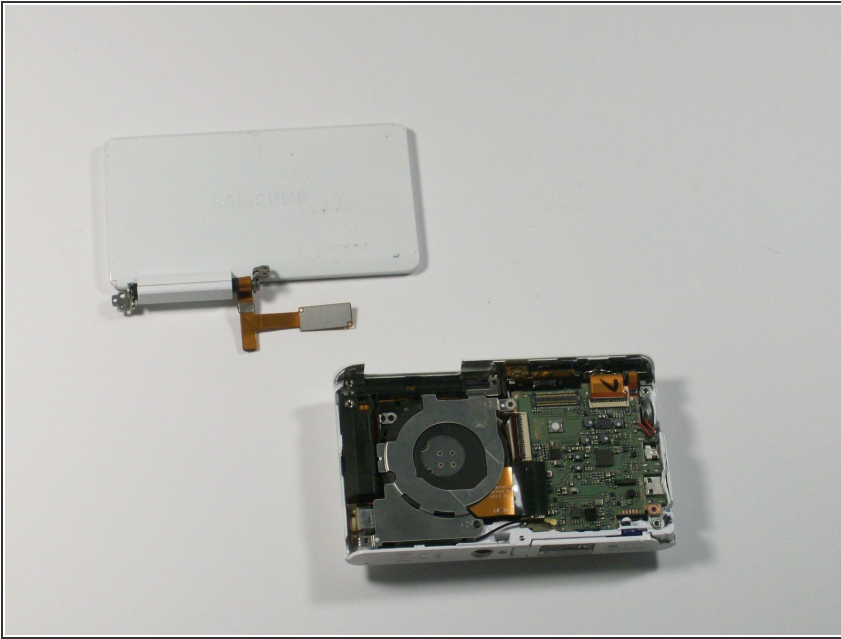
- Use the Phillips #00 screw driver to remove the four 2.381 mm screws next to the screen hinge.

## Step 8



- Use plastic opening tool to disconnect screen connector from the control board.

## Step 9



- Remove the old screen.

To reassemble your device, follow these steps in reverse order.