



# Samsung Mythic SGH-a897 Motherboard Replacement

Replace the motherboard of your Samsung Mythic SGH-a897.

Written By: Morgan Yost



# INTRODUCTION

Use this guide to replace the motherboard of the Samsung Mythic SGH-a897.



## TOOLS:

- [Phillips #00 Screwdriver](#) (1)
  - [iFixit Opening Tools](#) (1)
  - [Tweezers](#) (1)
-

## Step 1 — Battery



- Slide your fingernail into the slit at the bottom of the phone to remove the back cover.

## Step 2



- Place your finger in either of the bottom corner of the battery slot and lift to remove the battery.



### Step 3 — Rear Case



- Remove six 5 mm Phillips #0 screws from the back of the phone.

### Step 4



- Insert a plastic opening tool into the seam between the back case and the rest of the phone.
- Working along the seam, pry the back from the phone.

## Step 5 — Camera



- Use a plastic opening tool to disconnect the camera cable from the motherboard.
- Carefully remove the camera from the phone.

## Step 6 — Motherboard



- Remove the two remaining 3.75 mm Phillips screws.



## Step 7



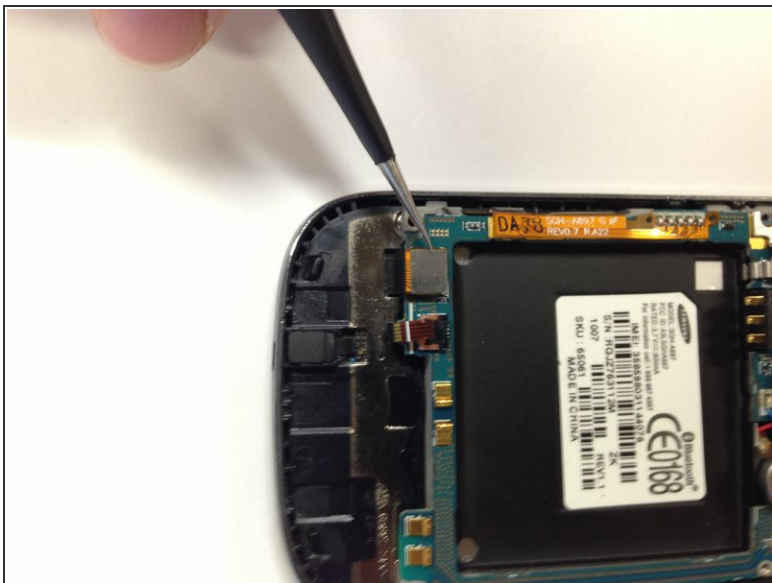
- Firmly grip the black lever with tweezers
- Use the tweezers to flip the black lever up so that it is perpendicular to the motherboard.

## Step 8



- Carefully use the tweezers to slide the black ZIF cable out of the socket.

## Step 9



- Use the tweezers to unclip the black connector as shown.

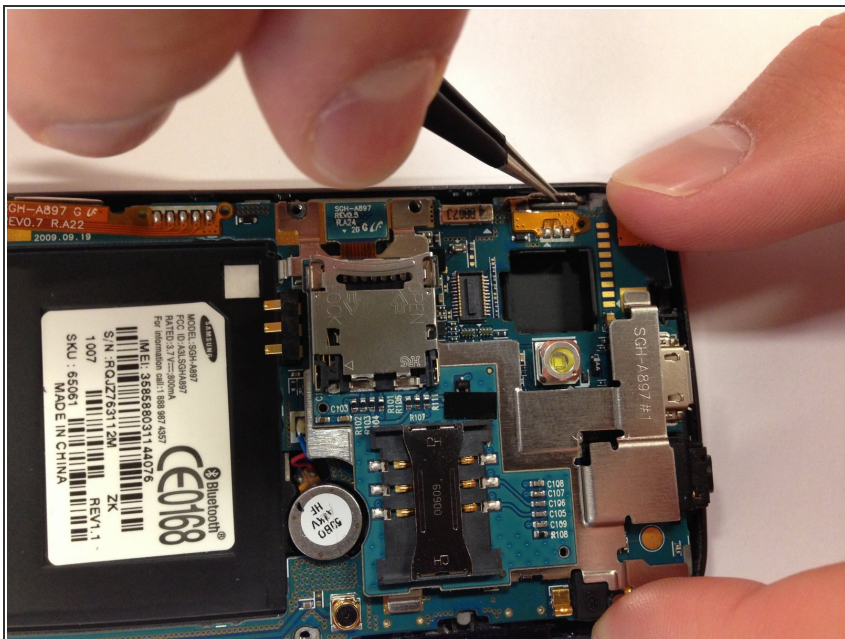
## Step 10



- Use the tweezers to unclip the orange flexible circuit board from the side of the phone.



## Step 11



- Use the tweezers to unclip the other orange, smaller flexible circuit board.

⚠ Work carefully. This is a very delicate part of the phone that can easily be broken.

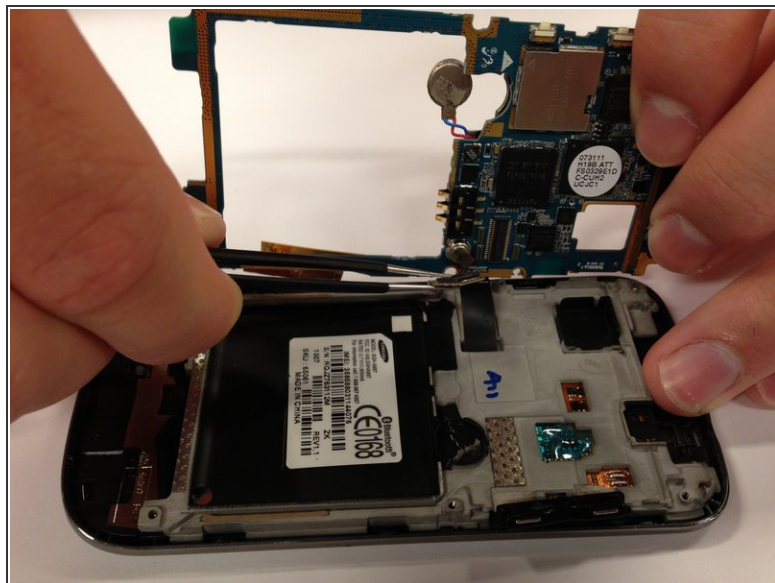
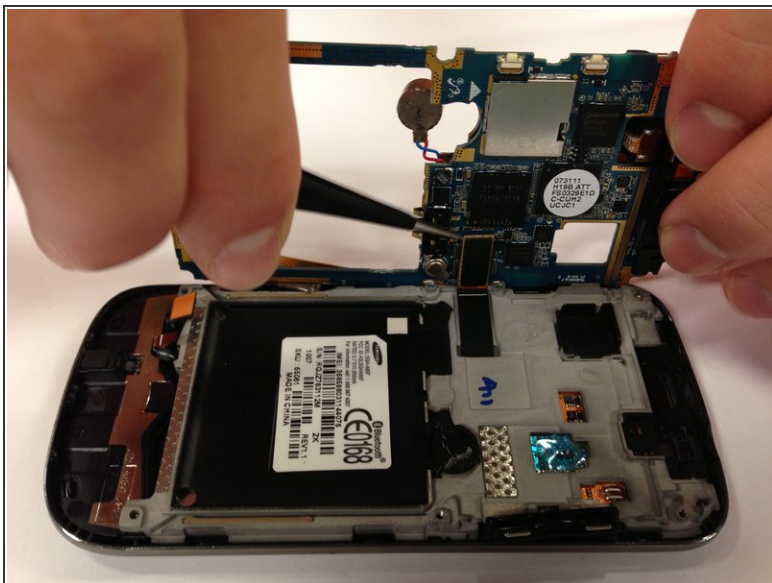
## Step 12



- Slide one side of the tweezers underneath the red and blue wires of the capacitor.
- Carefully apply pressure away from the phone to lift.



## Step 13



- Carefully tilt the motherboard up from the back of the phone.
- ⚠ Don't remove the motherboard completely. There is one more clip on the backside of the motherboard that needs to be removed.
- Use tweezers to unclip the black connector.

To reassemble your device, follow these instructions in reverse order.