



Samsung NP-N102S-B05PH Display Replacement

This guide will teach you how to replace that old banged-up screen in your laptop with a snazzy new one!

Written By: Daniel Rudzik



INTRODUCTION

The screen is one of the more difficult parts of this laptop to replace, but it also is exposed and fairly fragile. Replacing the screen rather than the laptop could make an accidental drop into a much smaller problem.



TOOLS:

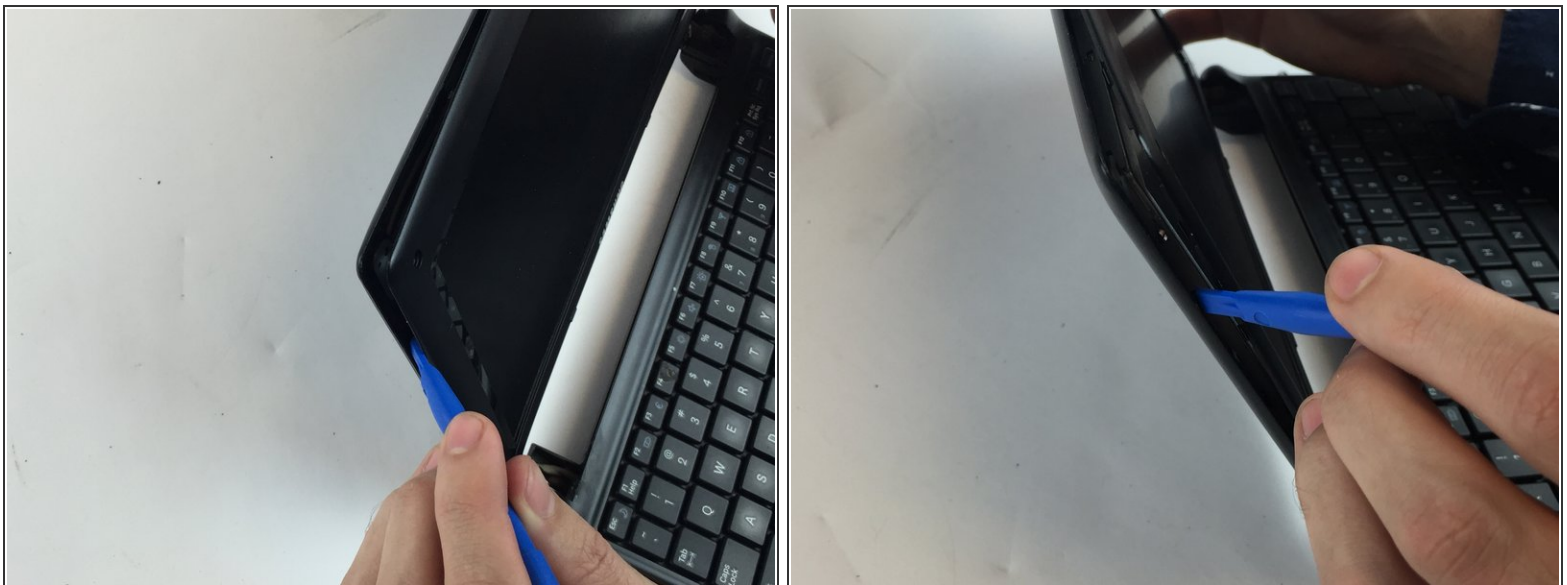
- [iFixit Opening Tools](#) (1)
 - [Heavy-Duty Spudger](#) (1)
 - [Phillips #0 Screwdriver](#) (1)
-

Step 1 — Display



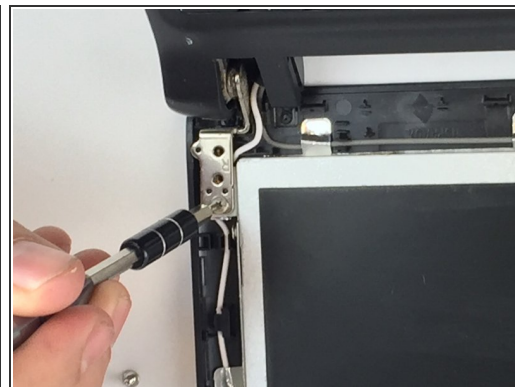
- Take out the four 4.5mm Phillips #0 screws located at the corners of the screen.

Step 2



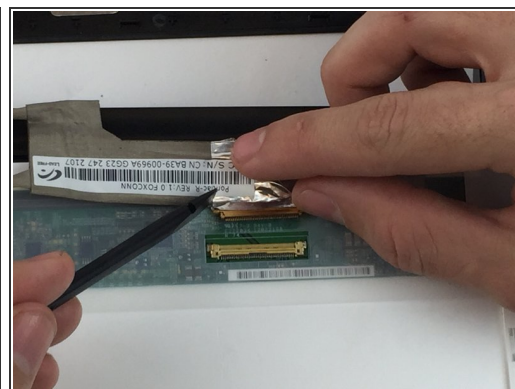
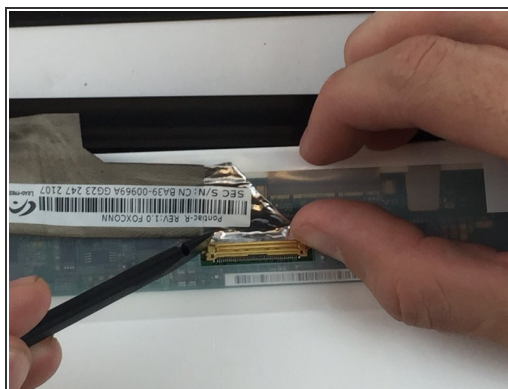
- Now, use the blue opening tool to gently pry the front bezel off.

Step 3



- Unscrew each of the four 6.5mm Phillips #0 screws securing the screen to the case.

Step 4



- Using the black spudger tool and your fingertip, gently push on the ends of the ribbon cable to pop it out of the socket.

Step 5



- The screen is can now be lifted away from the laptop.

To reassemble your device, follow these instructions in reverse order.