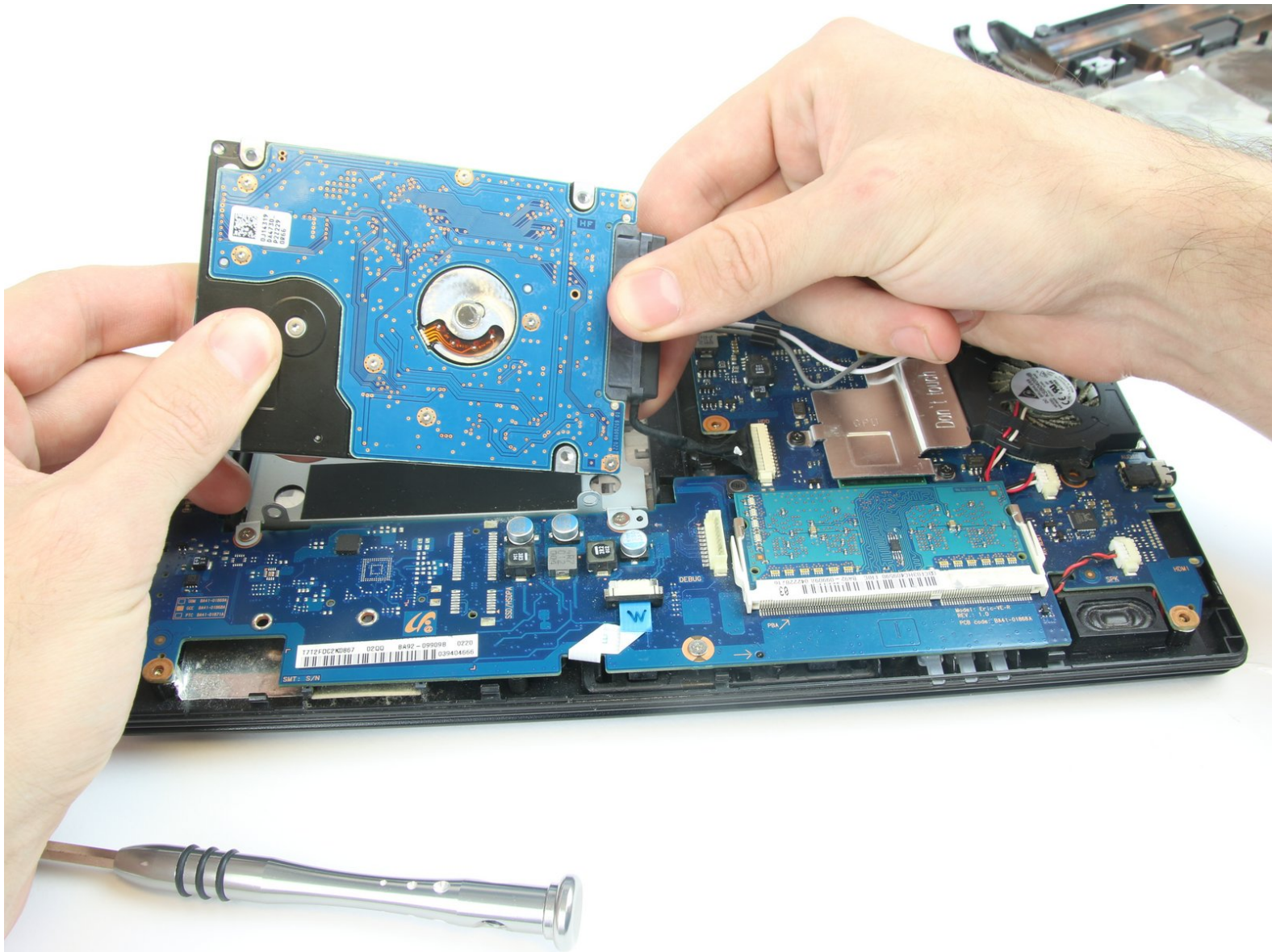




Samsung NP-N102S-B05PH Hard Drive Replacement

The hard drive is an essential component to any computer, and this guide will teach you how to replace your current hard drive with a new one.

Written By: Daniel Rudzik



INTRODUCTION

In this guide, we will open up the back case of the laptop and replace the hard drive.



TOOLS:

- [Phillips #0 Screwdriver](#) (1)
 - [iFixit Opening Tools](#) (1)
-

Step 1 — Hard Drive



- Start off by powering down your laptop, equipping your anti-static wrist strap, and positioning your laptop upside-down.

Step 2



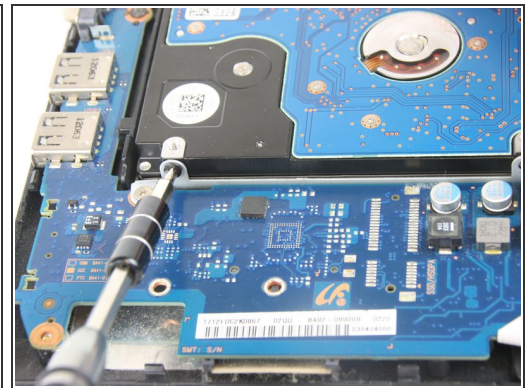
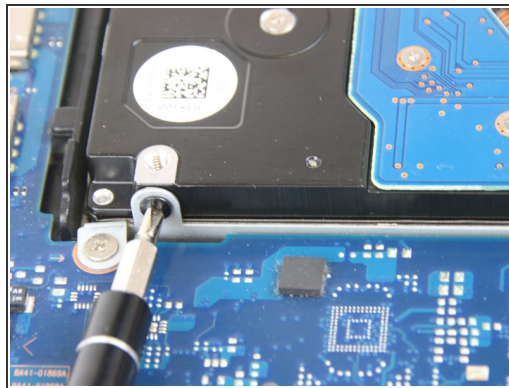
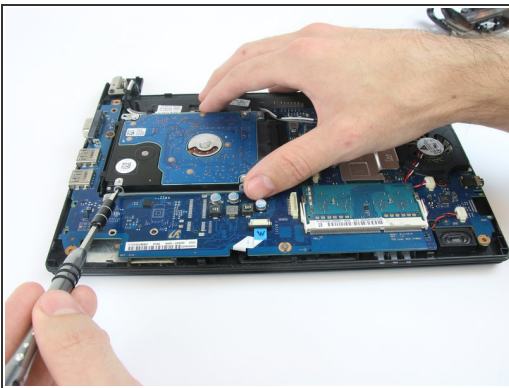
- Remove the assortment of 6.5mm Phillips #0 screws labeled in the picture.

Step 3



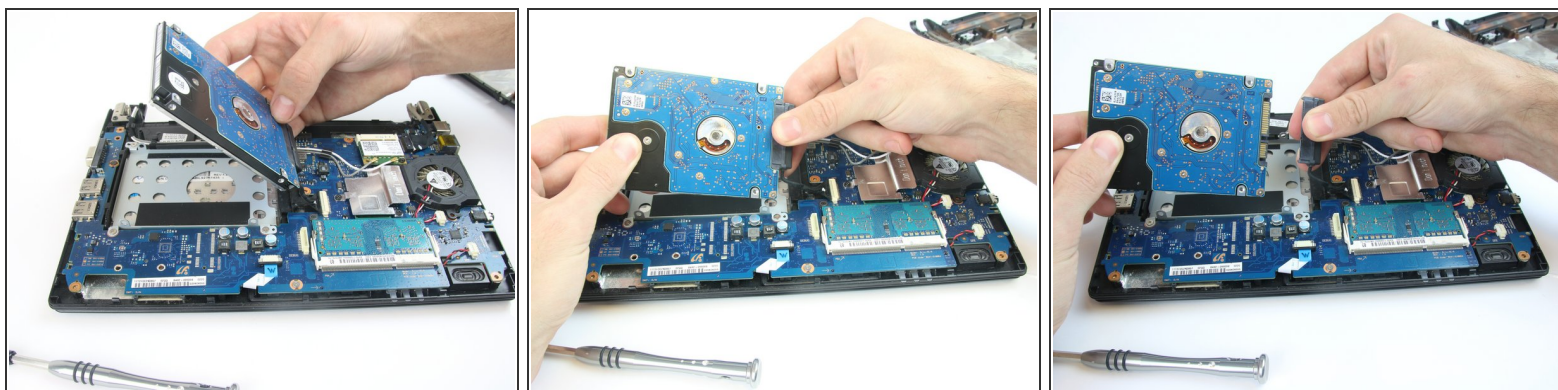
- Now it's time to break out your blue opening tool! Pry off the bottom cover, which is now attached only by plastic clasps.

Step 4



- Use a Phillips #0 screwdriver to remove the four 4.5mm bracket screws holding the hard drive onto the motherboard.
- Take care not to remove the screws holding the bracket to the motherboard, as you will need that bracket to attach the next hard drive.

Step 5



- Last, lift up the hard drive and gently pull off the SATA cable that is currently connected to the board. The hard drive is now fully removed from the laptop.

To reassemble your device, follow these instructions in reverse order.