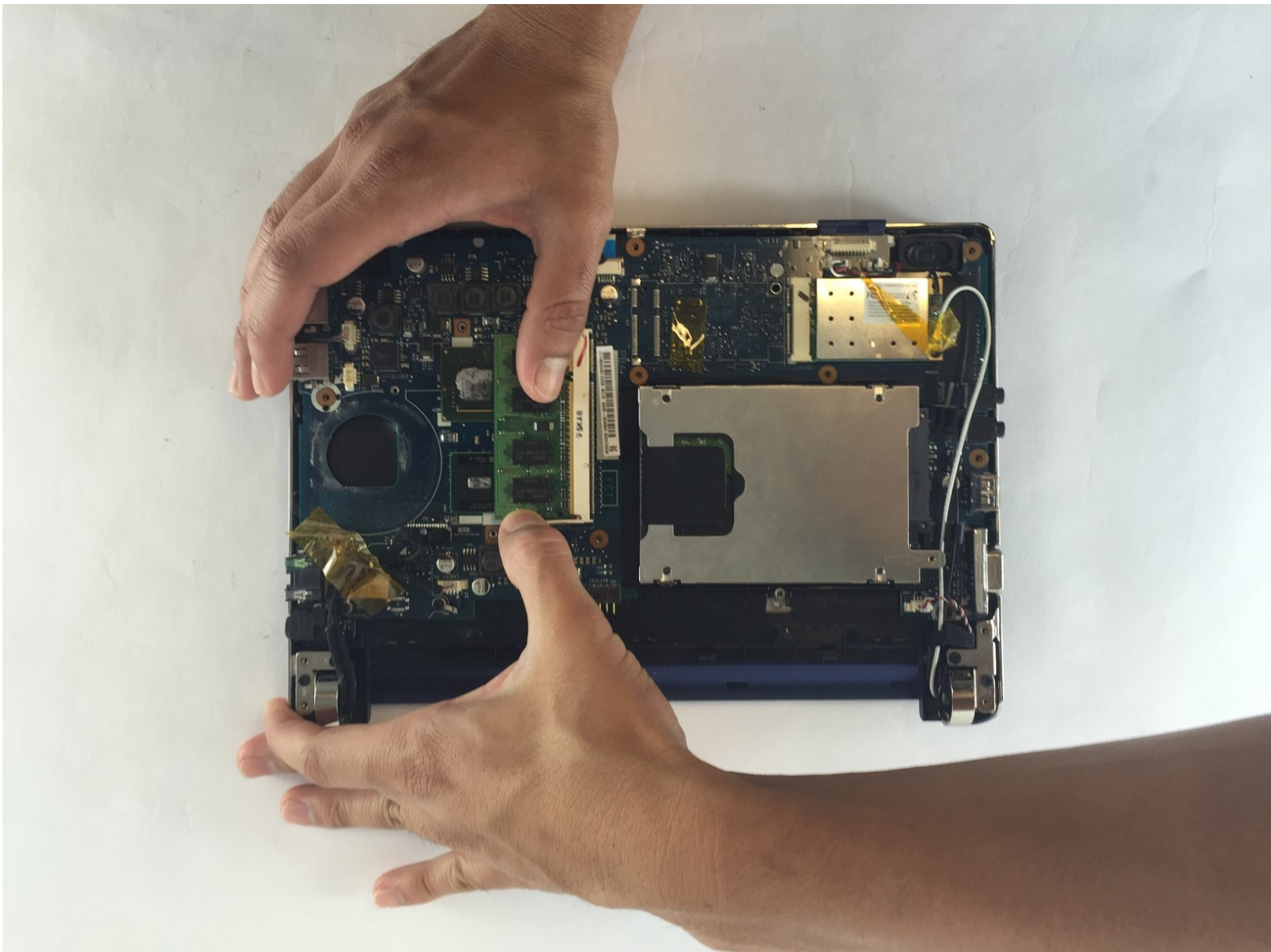




Samsung NP-NC10-KA02US RAM Replacement

Maximizing the memory RAM on your computer, by replacing an existing RAM with a new one

Written By: JHOAN USECHE



INTRODUCTION

In order to maximize the memory RAM on a computer, it needs to be replaced with a new one.



TOOLS:

- [iFixit Opening Tools](#) (1)
 - [Phillips #1 Screwdriver](#) (1)
-

Step 1 — Battery



- Locate the external battery on the bottom side of the device.
- Locate the tab on the right side of the battery.
- Shift the tab to the left.

Step 2



- Locate the tab on the left side of the device's battery.
- Push the left tab to the right.

Step 3



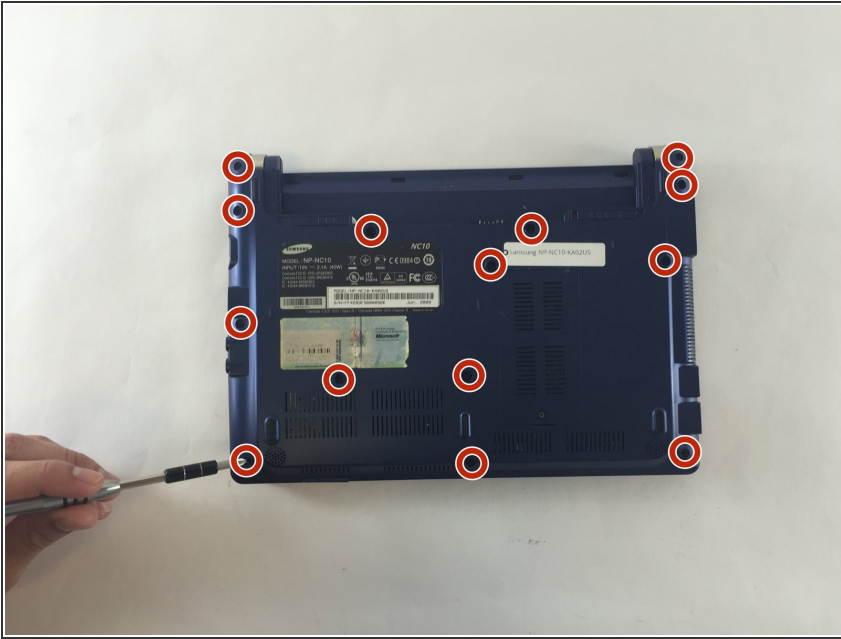
- Pull the battery up from the device.

Step 4 — Back Plate



- Locate the 14, 3.93 mm, screws that need to be removed on the base of the computer.

Step 5



- Remove all 14 of the 3.93 mm screws using a PH1 screw bit.

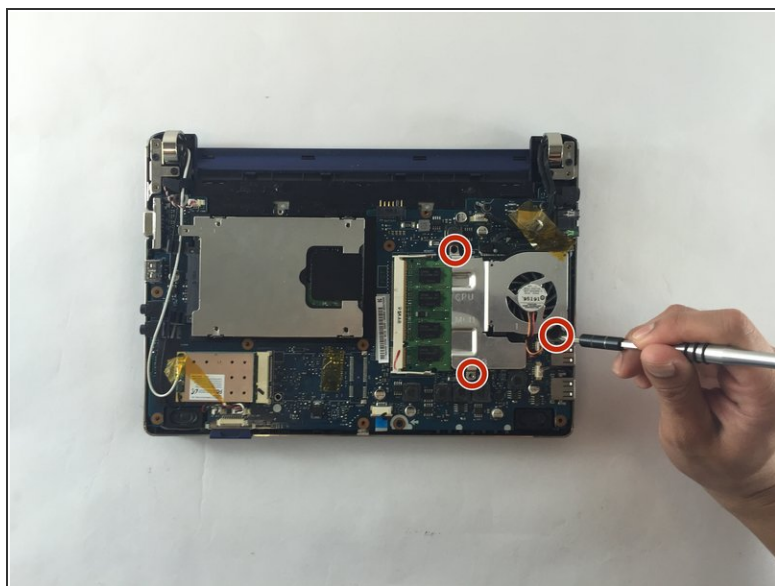
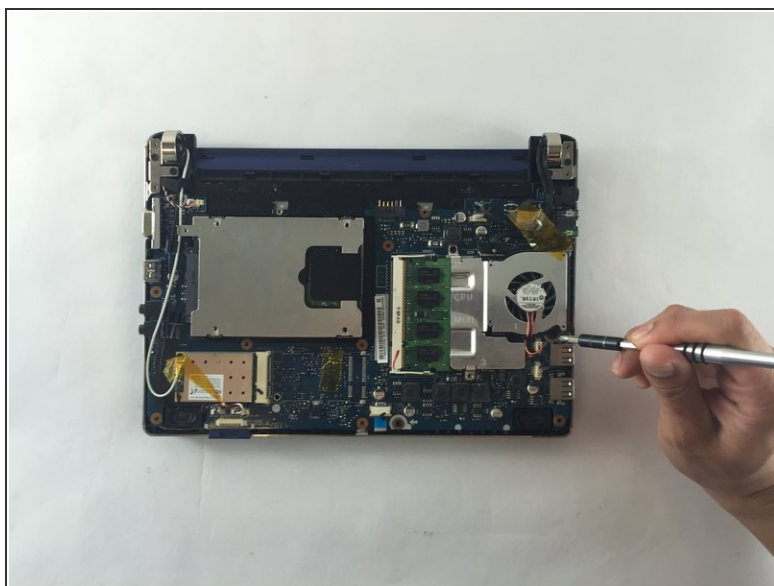
Step 6



- Using two plastic opening tools remove the back plate.
- ⓘ These plastic opening tools have a flat-head that extends as a wedge which are utilized to separate pressure fit plastic components without causing any damage to them.
- The back plate is now removed exposing all of the hardware components.

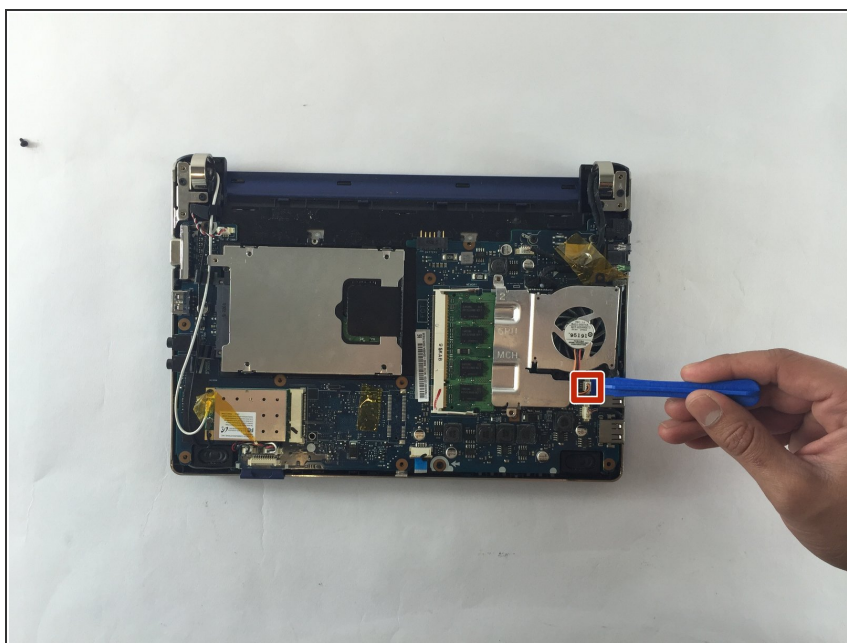
This document was generated on 2019-10-04 05:16:16 AM (MST).

Step 7 — Fan



- Remove the three screws holding the fan using a 3.9mm screwdriver.
- ⓘ All three screws need to be removed in order to continue on to next step.

Step 8



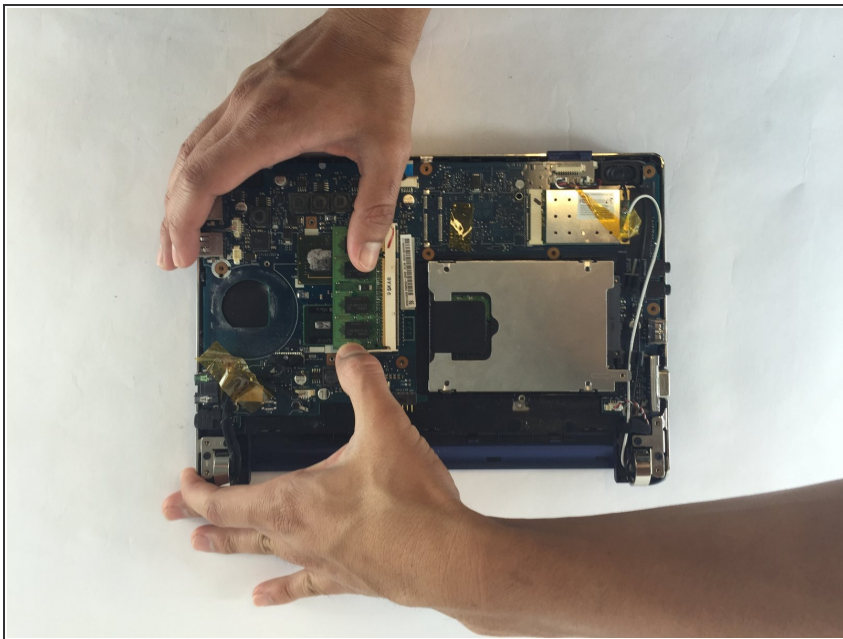
- Unplug the wires connected to the fan using a plastic opening tool.

Step 9



- You are now able to carefully detach the fan from the base.

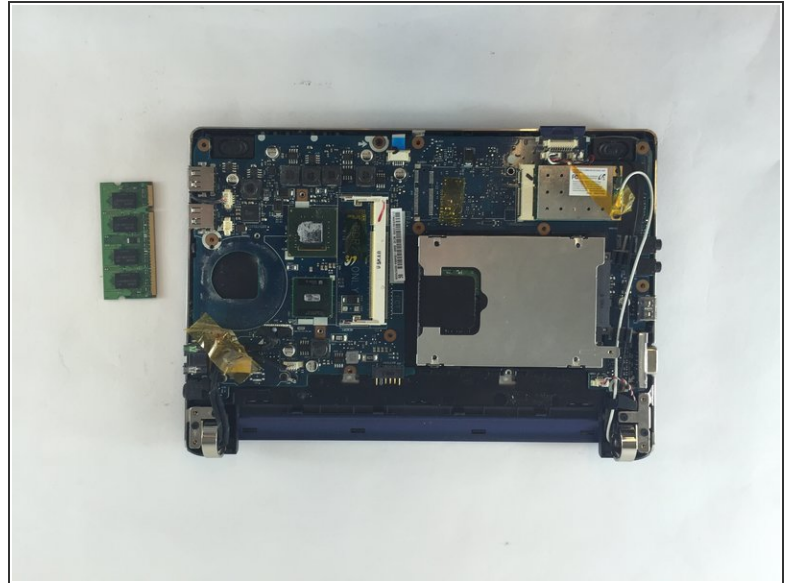
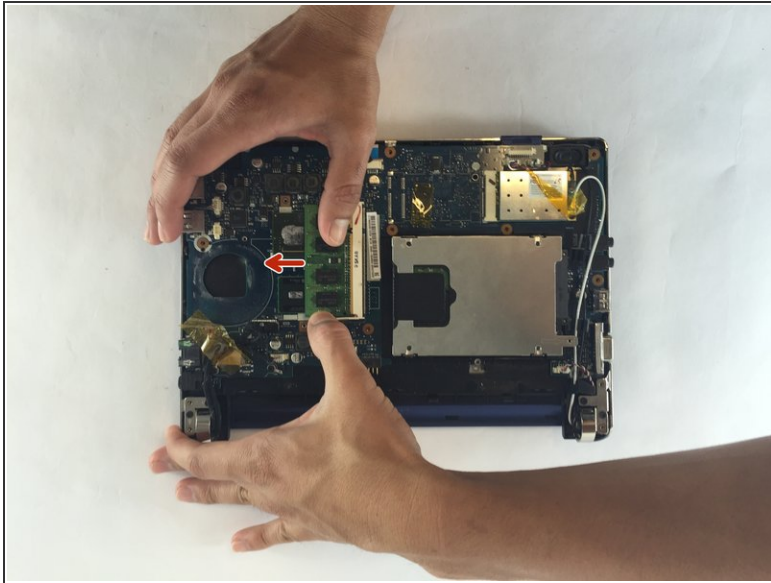
Step 10 — RAM



- After detaching the fan, you are now able to remove the RAM by extending the two side bars out

⚠ During this process, the computer needs to be shut off. Other components could be damaged and the computer would not be able to recognize the RAM properly.

Step 11



- With the bars extended, you are now able to slide the RAM off the base.

To reassemble your device, follow these instructions in reverse order.