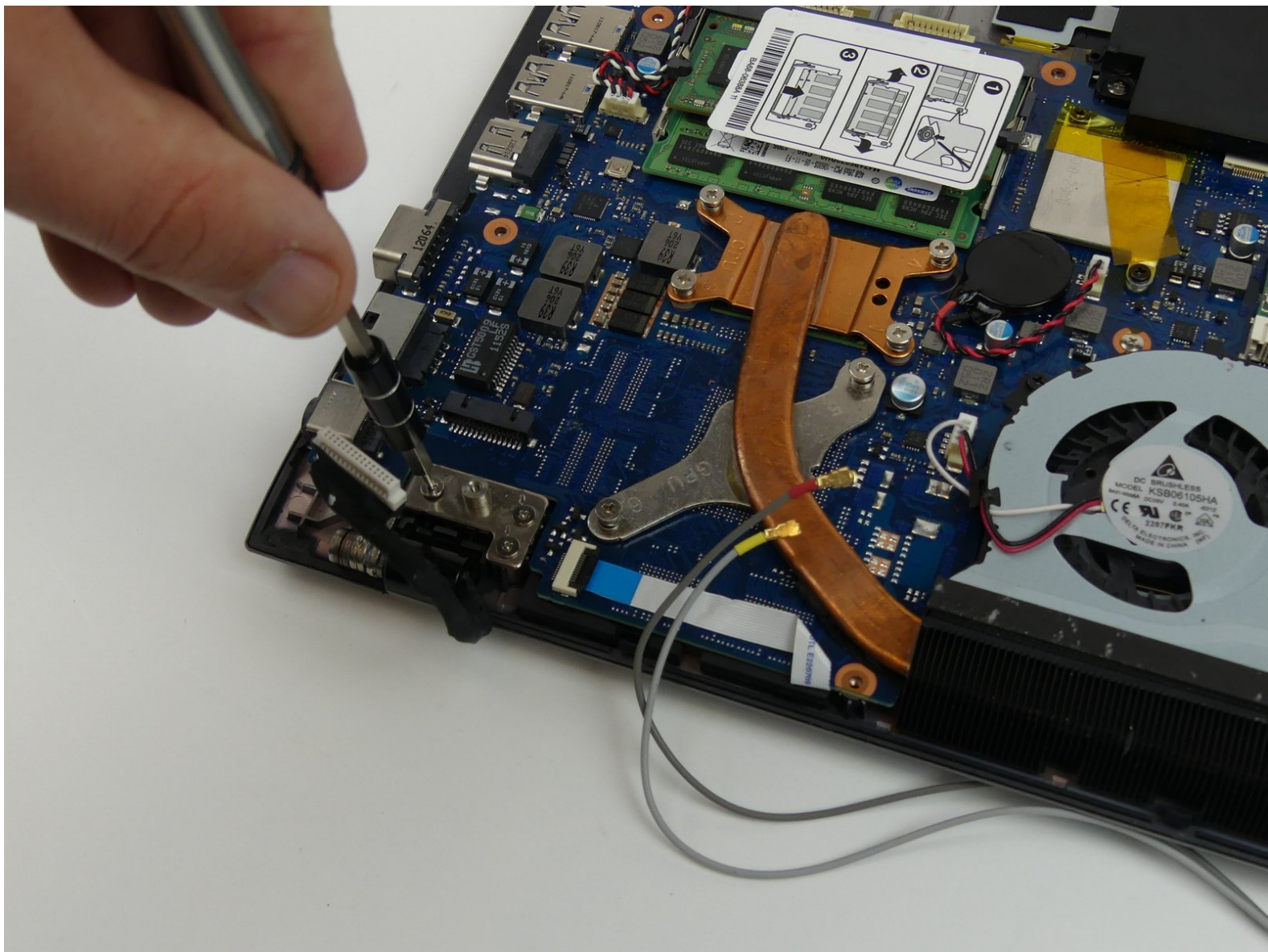




Samsung NP-QX411L Hinges Replacement

This guide walks through the steps required to replace the hinges on a Samsung NP-QX411L Laptop.

Written By: Rebecca Johnson



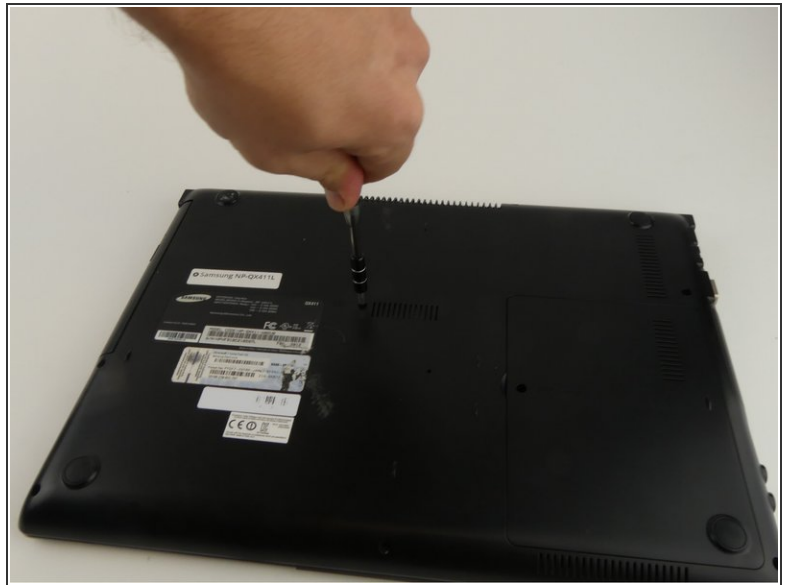
INTRODUCTION

If your computer gets stuck or does not open/close smoothly, it may help to replace the hinges using this guide. The optical drive and hard drive must be removed first.

TOOLS:

- [Phillips #000 Screwdriver](#) (1)
 - [Heavy-Duty Spudger](#) (1)
 - [Anti-Static Wrist Strap](#) (1)
 - [Precision Tweezers Set](#) (1)
 - [Metal Spudger](#) (1)
 - [iFixit Opening Tools](#) (1)
-

Step 1 — Optical Drive



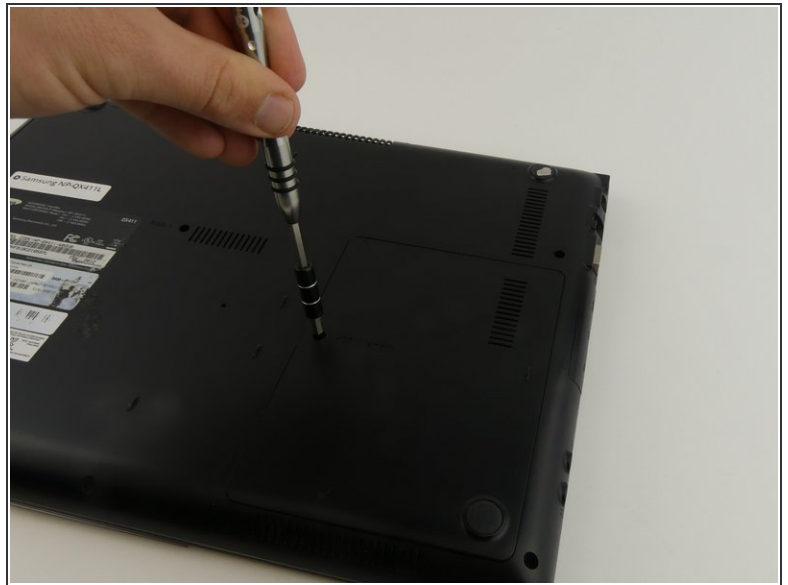
- Flip the laptop over.
- Remove the 6 mm screw with the Phillips #000 screwdriver.


Step 2



- Slide out the optical drive to remove it.

Step 3 — Hard Drive



 Put on the anti-static wristband and connect the attached alligator clip to a metal object. This will prevent you from shocking the motherboard.

- Flip the laptop.
- Use the Phillips #000 screwdriver to unscrew the 6 mm screw from the square panel.

Step 4



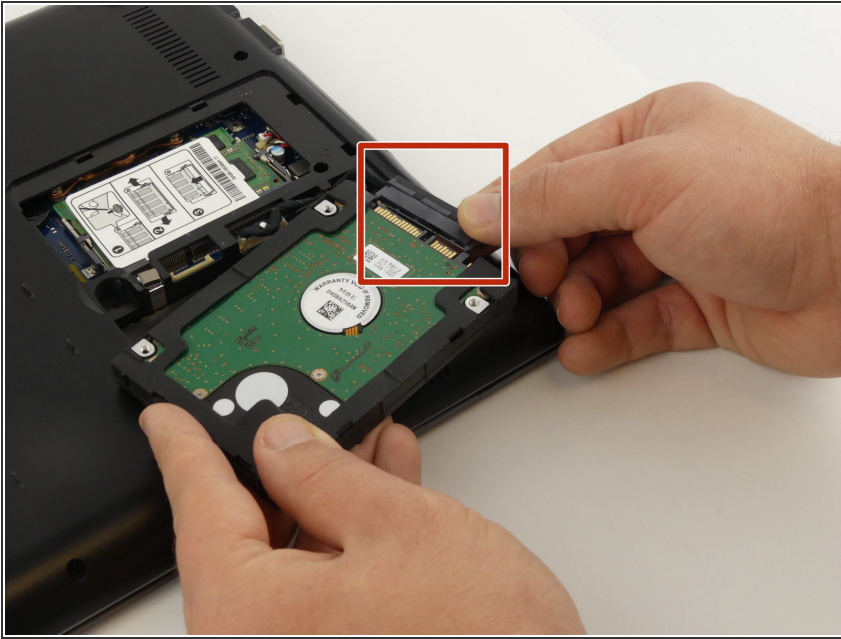
- Gently wedge the spudger under the square panel.
- Run the spudger under the edges of the square panel to loosen it.
- Remove the panel.

Step 5



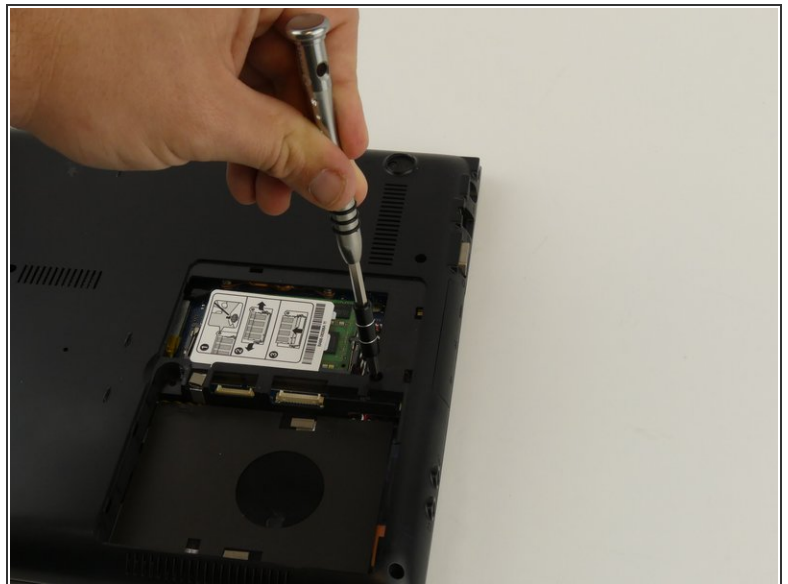
- ⚠ Remove the hard drive slowly because it is still connected to a wire.
- Pull up on the rubber flap or use the spudger to lift the hard drive.

Step 6



- Remove the hard drive by gently pulling the power connector at the base of the wire off. You can do this by pulling the connector away from the hard drive.

Step 7 — Hinges



- Disconnect the wire from the motherboard by pulling up and away from the laptop.
- Remove the 6 mm screw with the Phillips #000 screwdriver.

Step 8



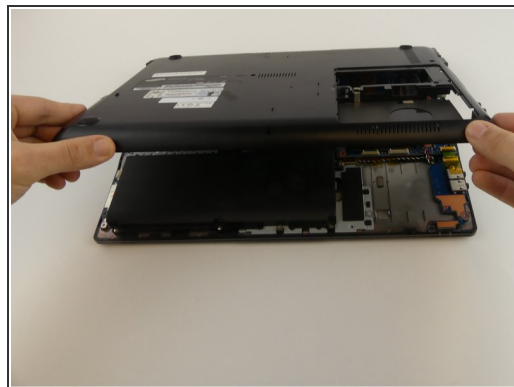
- Remove the top two rubber stoppers using precision tweezers.

Step 9



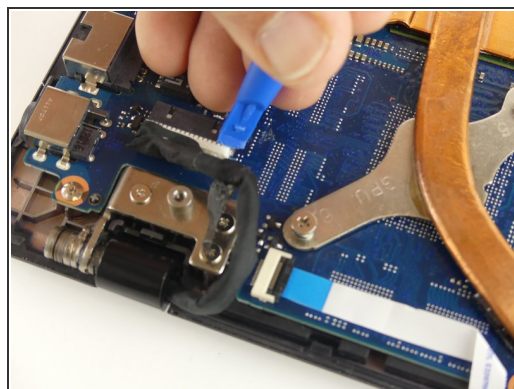
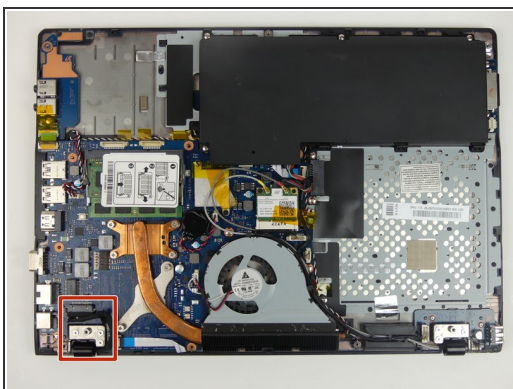
- Unscrew nine 6 mm screws on the cover using a Phillips #000 screwdriver.

Step 10



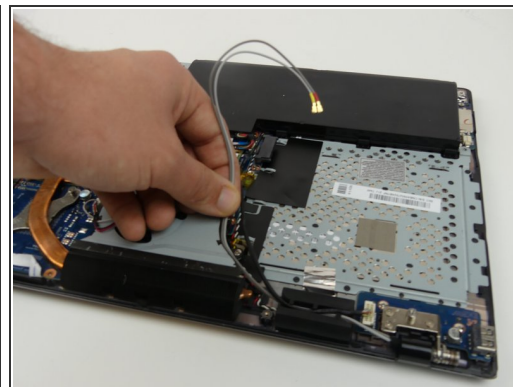
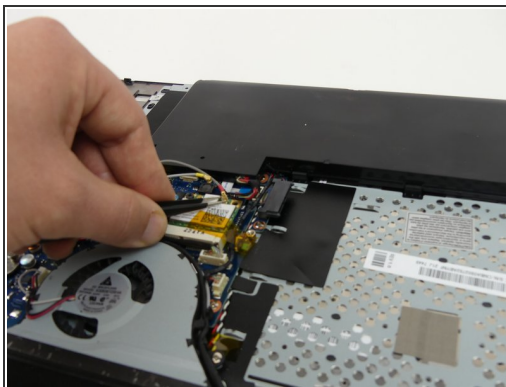
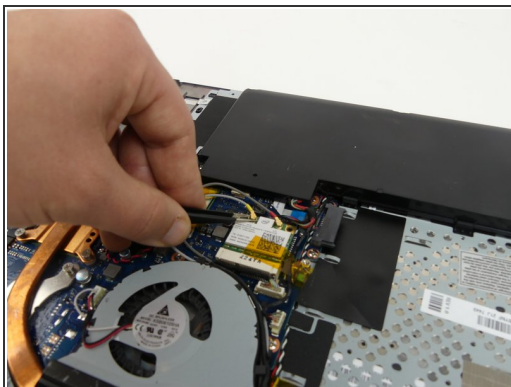
- Wedge the spudger under the cover to gently pry it up.

Step 11



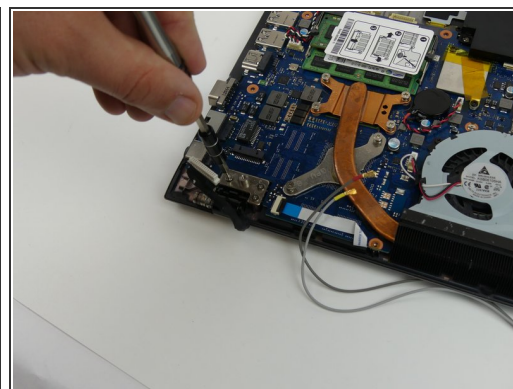
- Disconnect the wire by carefully using the plastic opening tool to pry the connector away from the motherboard.

Step 12



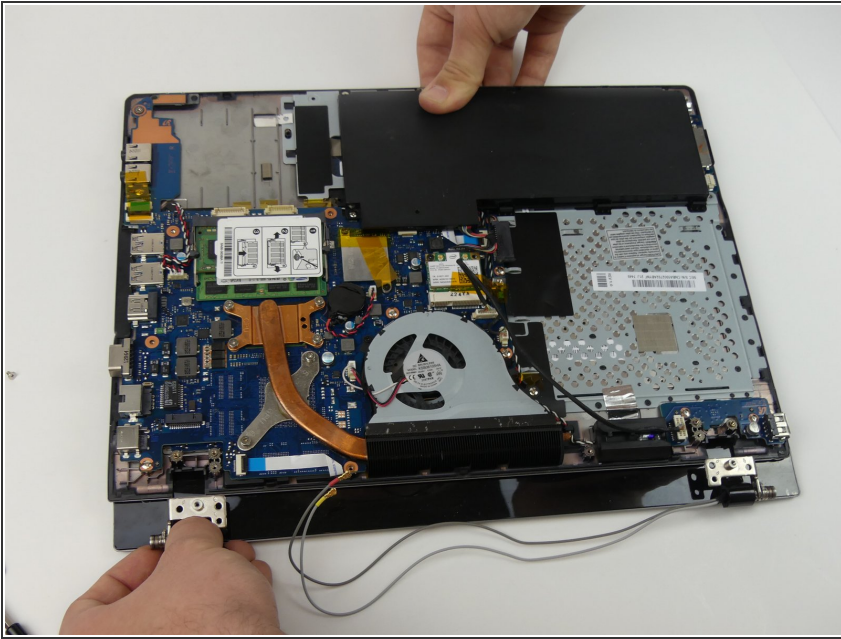
- Use precision tweezers to pop the antenna wires off of the WiFi card.

Step 13



- Open the laptop slightly.
- Holding the laptop open, remove three 4 mm screws from each hinge (6 total) using a Phillips #000 screwdriver.

Step 14



- Hold hinges in place with your thumb and slide the laptop away from the screen.

Step 15



- Remove the 4 rubber stoppers with the precision tweezers.

Step 16



- Remove the four 4 mm screws with a Phillips #000 screwdriver.

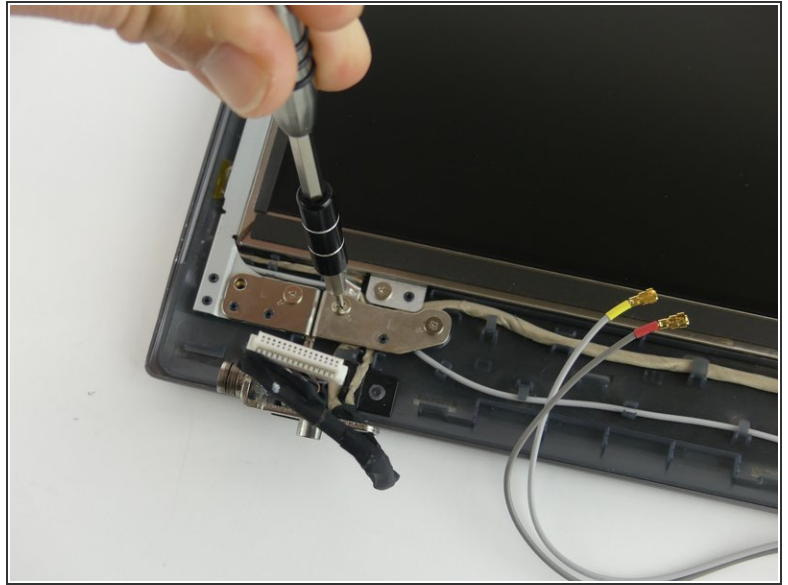
Step 17



⚠ The metal spudger could scratch the screen.

- Wedge the metal spudger underneath the cover and run it along the edges. Gently pry the cover up.

Step 18



- Remove the three 4 mm screws on each hinge with a Phillips #000 screwdriver. There should be a total of 6 screws to remove.

To reassemble your device, follow these instructions in reverse order.