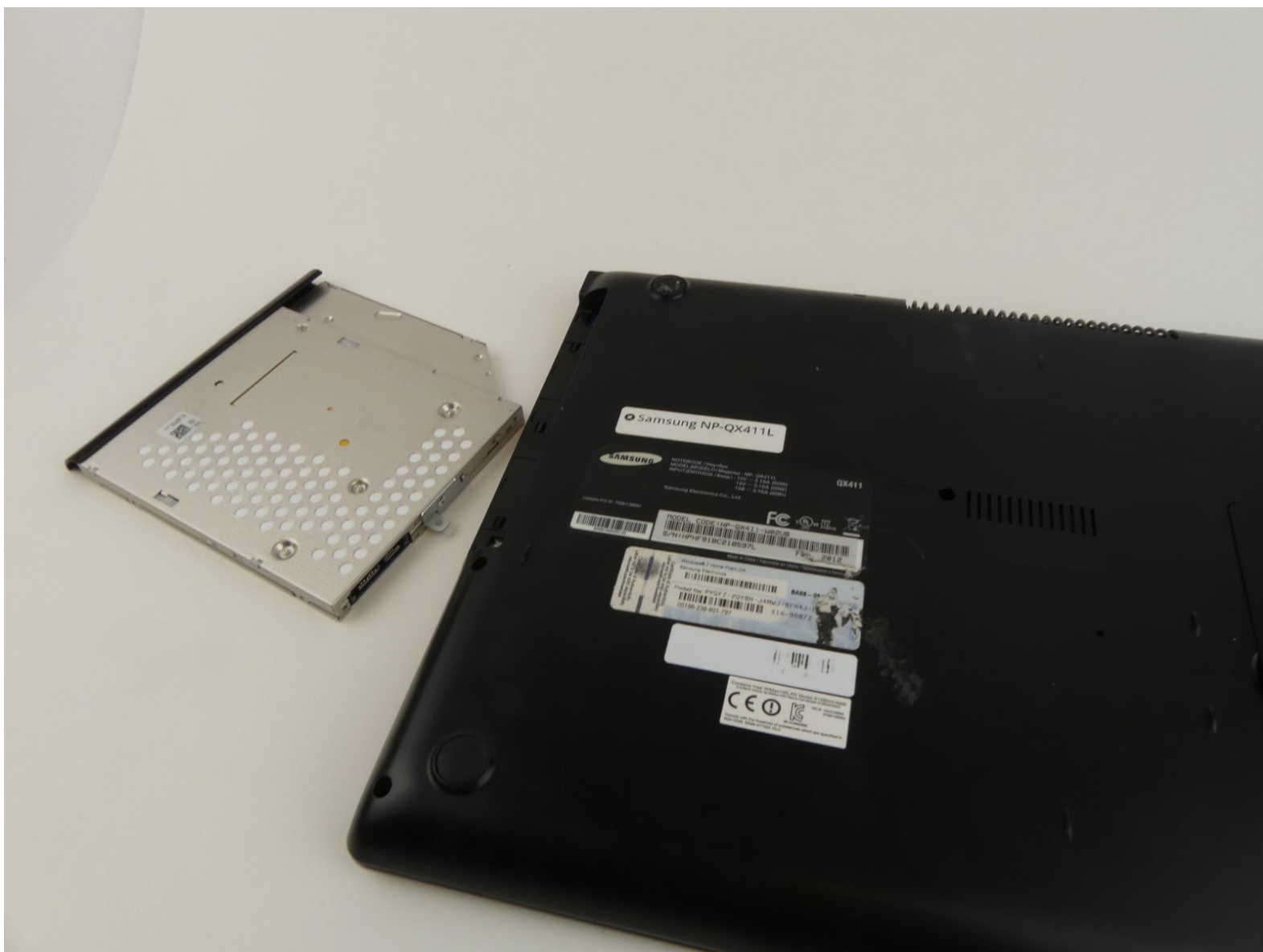




# Samsung NP-QX411L Optical Drive Replacement

This guide walks through the steps required to replace the optical drive on a Samsung NP-QX411L Laptop.

Written By: Rebecca Johnson



---

## INTRODUCTION

If you want to replace your optical drive for problems such as CD's or DVD's not being read, this guide walks through removing the optical drive.

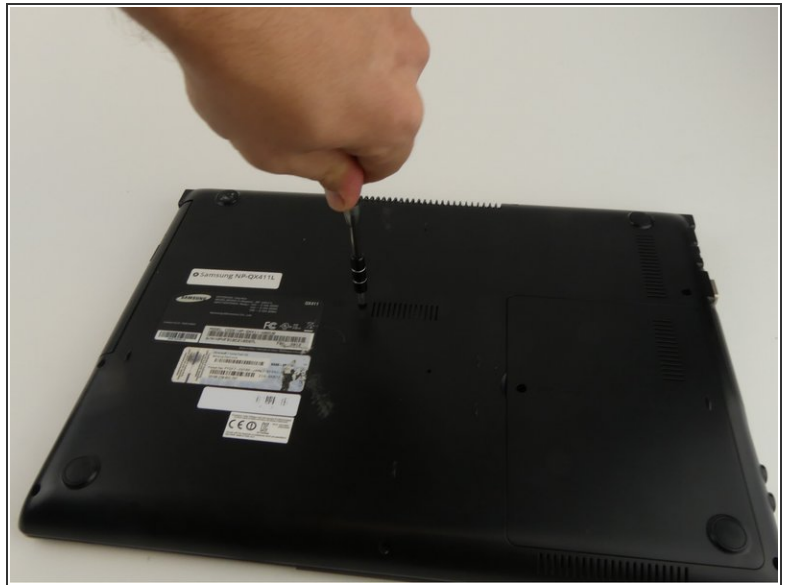
---



### TOOLS:

- [Phillips #000 Screwdriver](#) (1)
-

## Step 1 — Optical Drive



- Flip the laptop over.
- Remove the 6 mm screw with the Phillips #000 screwdriver.

## Step 2



- Slide out the optical drive to remove it.

To reassemble your device, follow these instructions in reverse order.