



# Samsung NP-QX411L Screen Replacement

This guide walks through the steps required to replace the screen on a Samsung NP-QX411L Laptop.

Written By: Rebecca Johnson



## INTRODUCTION

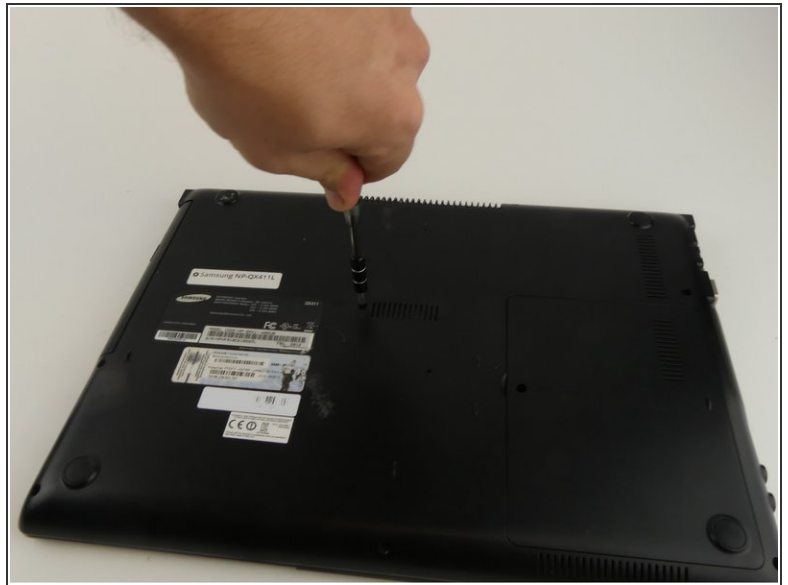
If there is no display on the screen or a black screen when the laptop is on, it may help to replace the screen using this guide. The optical drive, hard drive, and hinges must be removed first.

---

### TOOLS:

- [iFixit Opening Tools](#) (1)
  - [Phillips #000 Screwdriver](#) (1)
  - [Heavy-Duty Spudger](#) (1)
  - [Anti-Static Wrist Strap](#) (1)
  - [Precision Tweezers Set](#) (1)
  - [Metal Spudger](#) (1)
  - [Suction Handle](#) (1)
-

## Step 1 — Optical Drive



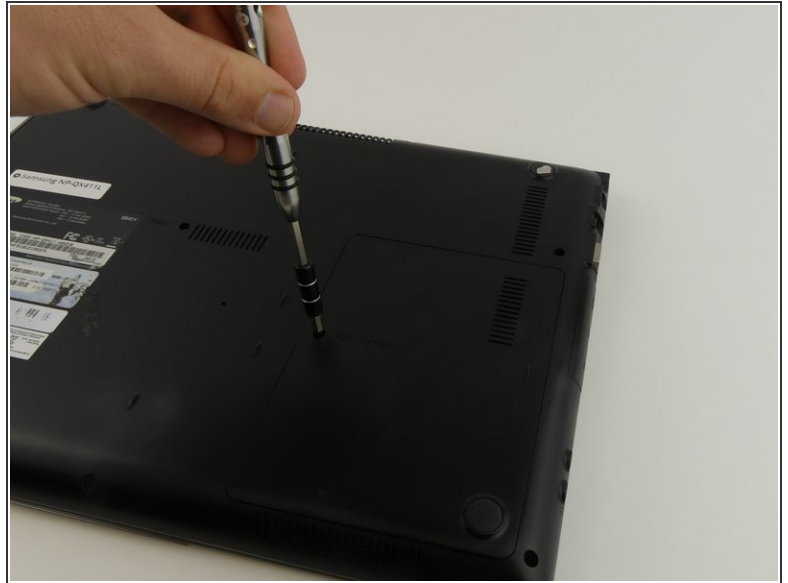
- Flip the laptop over.
- Remove the 6 mm screw with the Phillips #000 screwdriver.


## Step 2



- Slide out the optical drive to remove it.

## Step 3 — Hard Drive



 Put on the anti-static wristband and connect the attached alligator clip to a metal object. This will prevent you from shocking the motherboard.

- Flip the laptop.
- Use the Phillips #000 screwdriver to unscrew the 6 mm screw from the square panel.

## Step 4



- Gently wedge the spudger under the square panel.
- Run the spudger under the edges of the square panel to loosen it.
- Remove the panel.

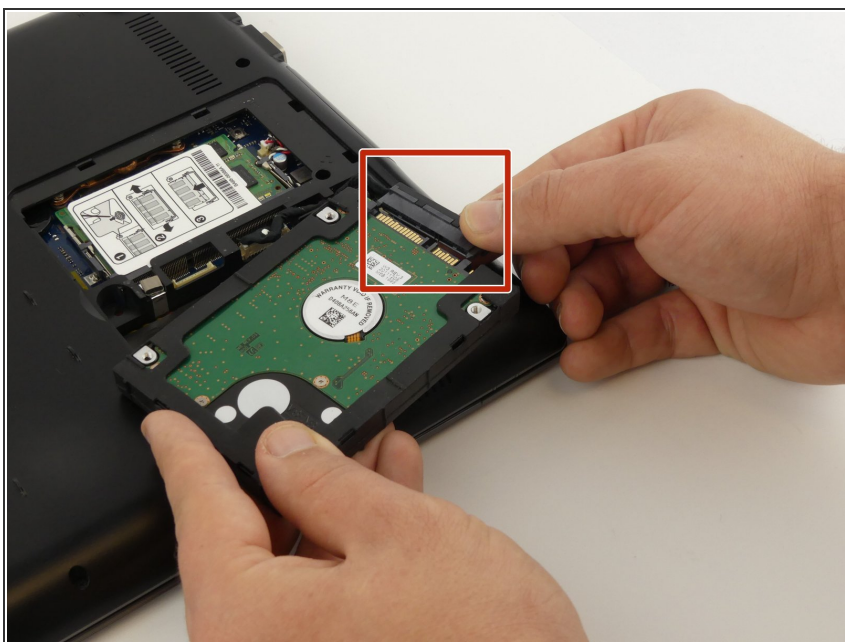
## Step 5



- ⚠ Remove the hard drive slowly because it is still connected to a wire.
- Pull up on the rubber flap or use the spudger to lift the hard drive.

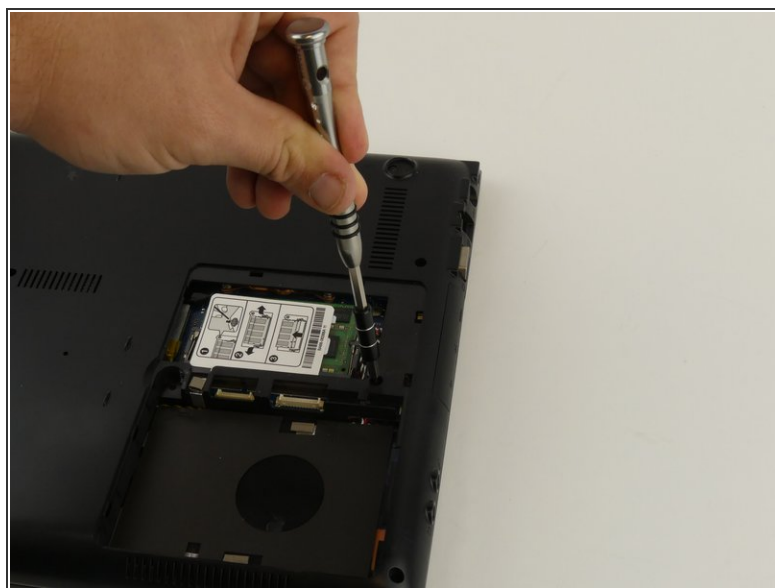


## Step 6



- Remove the hard drive by gently pulling the power connector at the base of the wire off. You can do this by pulling the connector away from the hard drive.

## Step 7 — Hinges



- Disconnect the wire from the motherboard by pulling up and away from the laptop.
- Remove the 6 mm screw with the Phillips #000 screwdriver.

## Step 8



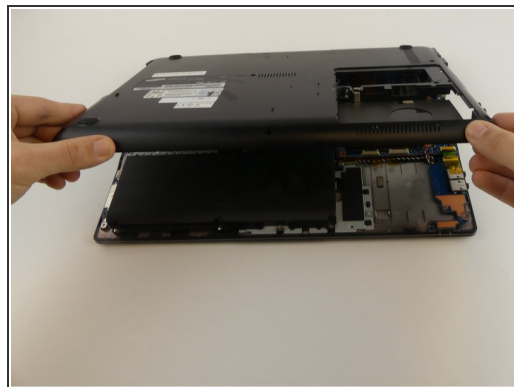
- Remove the top two rubber stoppers using precision tweezers.

## Step 9



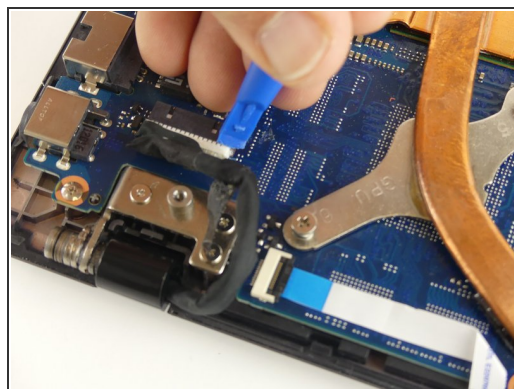
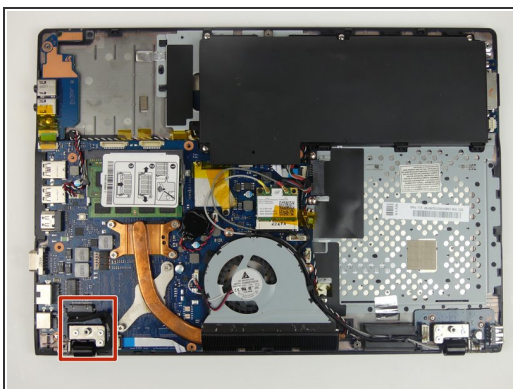
- Unscrew nine 6 mm screws on the cover using a Phillips #000 screwdriver.

## Step 10



- Wedge the spudger under the cover to gently pry it up.

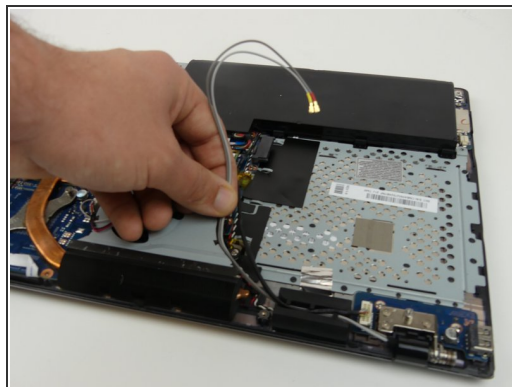
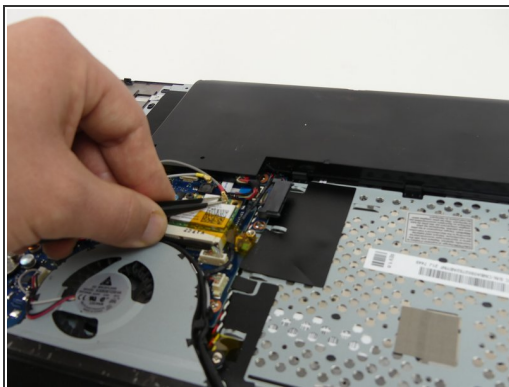
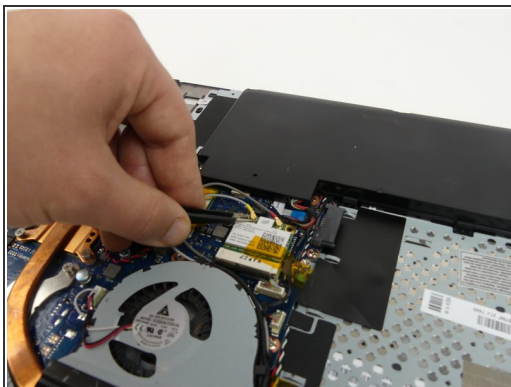
## Step 11



- Disconnect the wire by carefully using the plastic opening tool to pry the connector away from the motherboard.

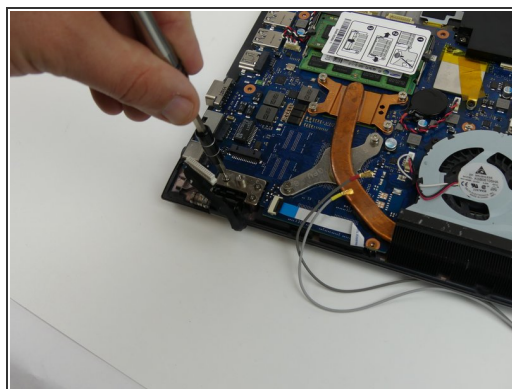


## Step 12



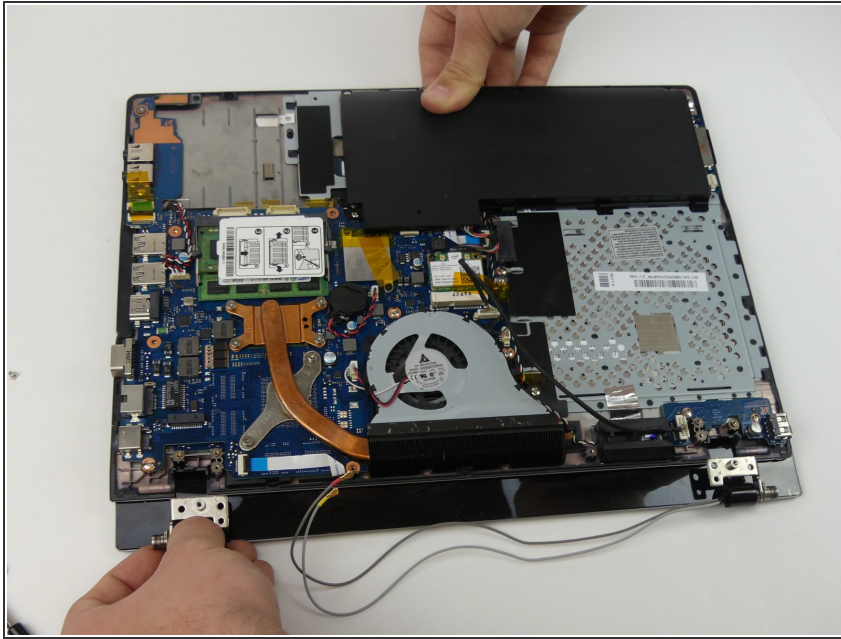
- Use precision tweezers to pop the antenna wires off of the WiFi card.

## Step 13



- Open the laptop slightly.
- Holding the laptop open, remove three 4 mm screws from each hinge (6 total) using a Phillips #000 screwdriver.

## Step 14



- Hold hinges in place with your thumb and slide the laptop away from the screen.

## Step 15



- Remove the 4 rubber stoppers with the precision tweezers.

## Step 16



- Remove the four 4 mm screws with a Phillips #000 screwdriver.

## Step 17

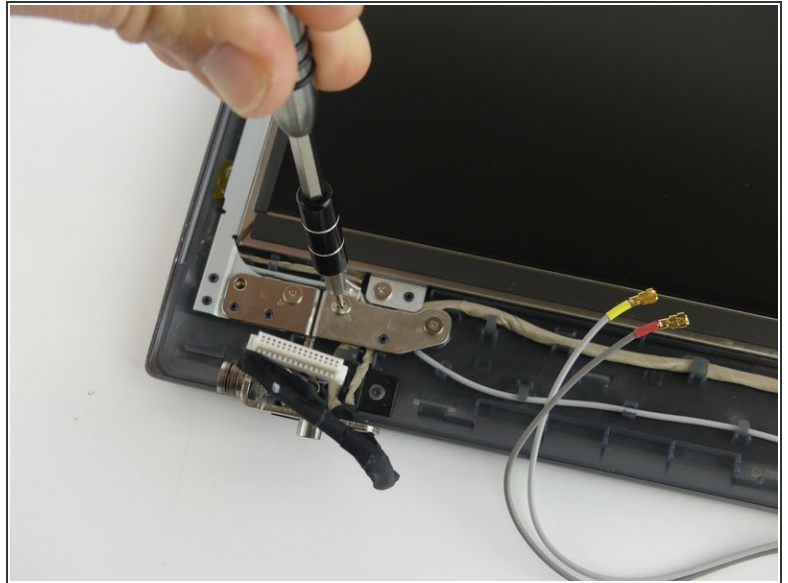


⚠ The metal spudger could scratch the screen.

- Wedge the metal spudger underneath the cover and run it along the edges. Gently pry the cover up.



## Step 18



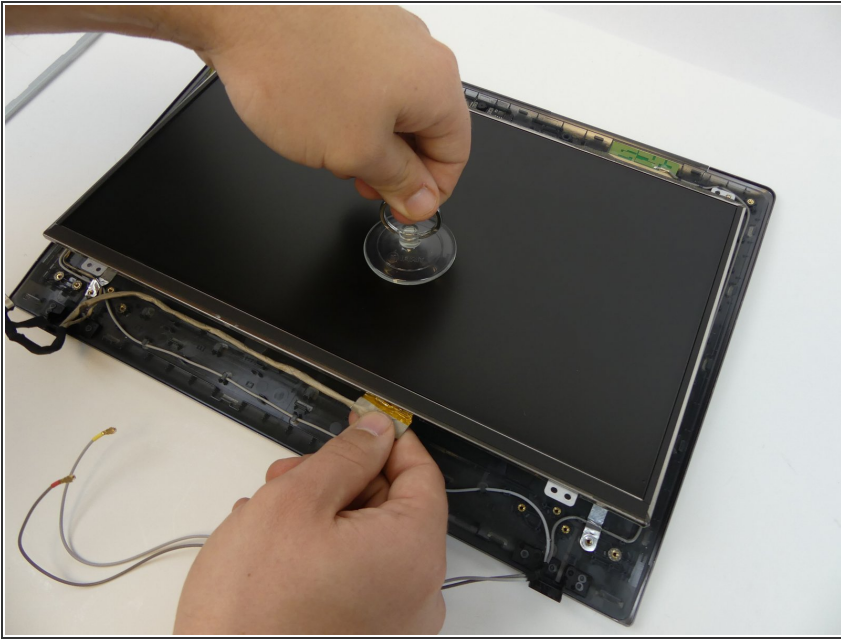
- Remove the three 4 mm screws on each hinge with a Phillips #000 screwdriver. There should be a total of 6 screws to remove.

## Step 19 — Screen



- Remove the four 4 mm screws using Phillips #000 screwdriver.
- Remove metal brackets.

## Step 20



- Use the small suction cup to lift the screen.
- Disconnect the wire by pulling it away from the bottom of the screen.

To reassemble your device, follow these instructions in reverse order.