



Samsung NP-R540-JA09US Front Panel Replacement

Access the inside of the laptop by removing the front panel of your Samsung NP-R540-JA09US.

Written By: Daylyn Bourland



INTRODUCTION

Use this guide to remove the front panel of your laptop to access the inner components of your device.



TOOLS:

- [Phillips #0 Screwdriver](#) (1)
 - [Phillips #00 Screwdriver](#) (1)
 - [iFixit Opening Tools](#) (1)
-

Step 1 — Battery



- ⚠ Turn off laptop before starting.
- ⚠ Remove power cable before starting.
- Flip the laptop over so that the bottom of the laptop is facing upwards.

Step 2



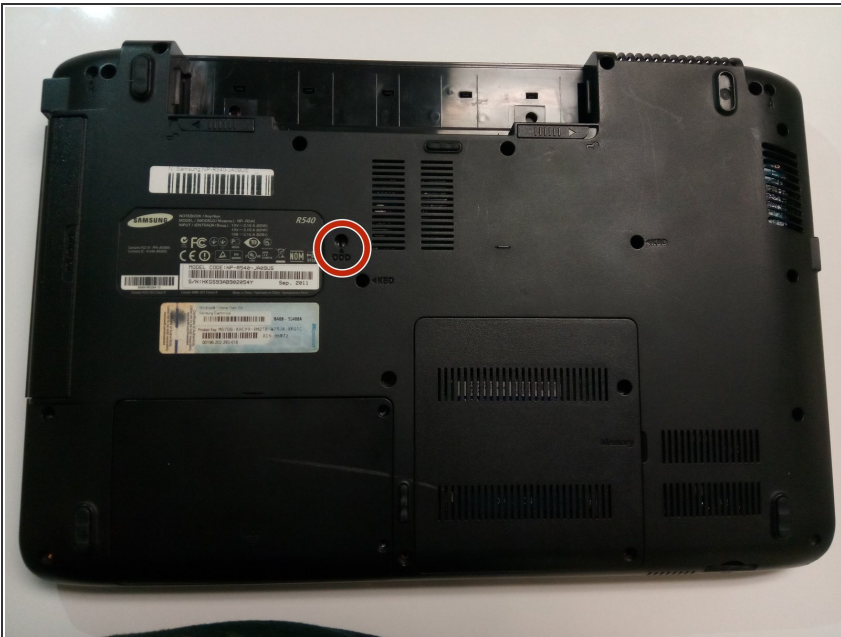
- Pull the two latches outward.

Step 3



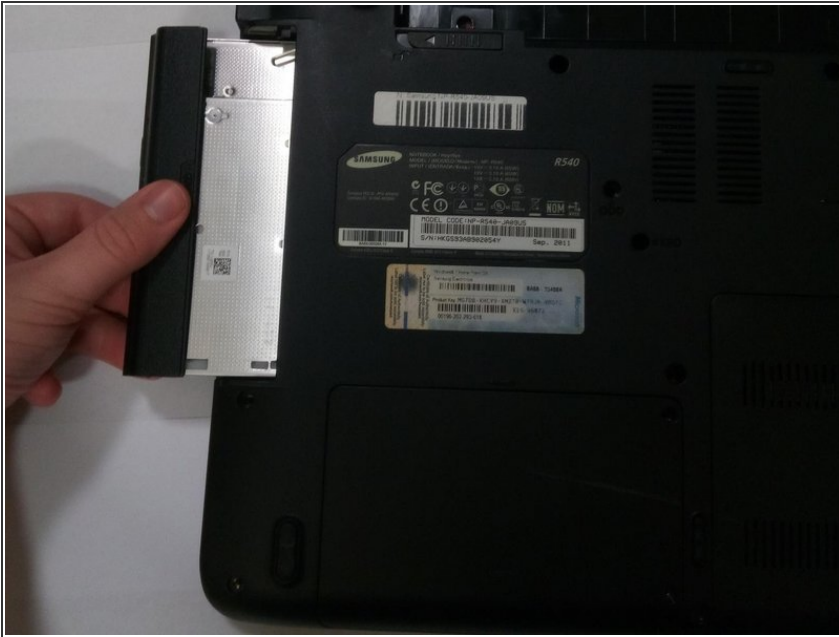
- Slide the battery out of the laptop.

Step 4 — Optical Drive



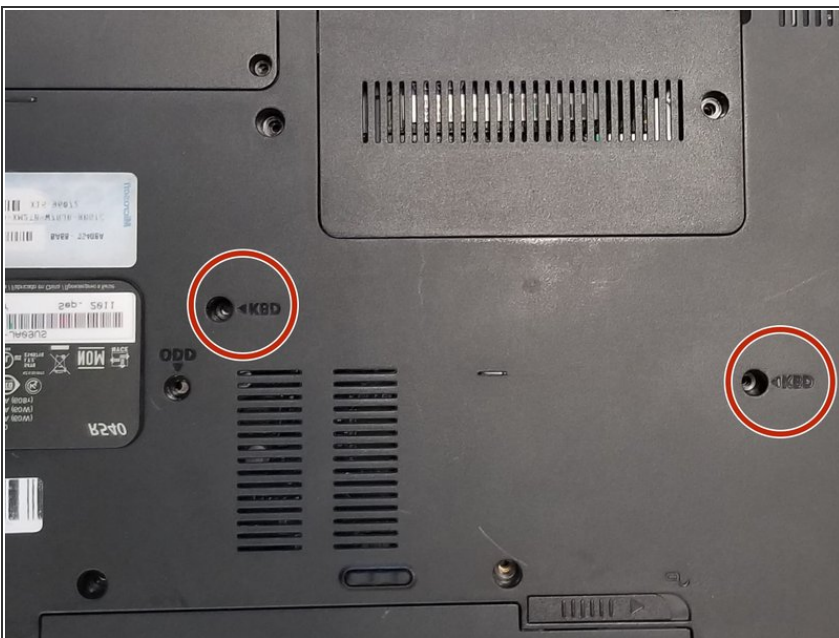
- Remove securing screw with the PH0 head.

Step 5



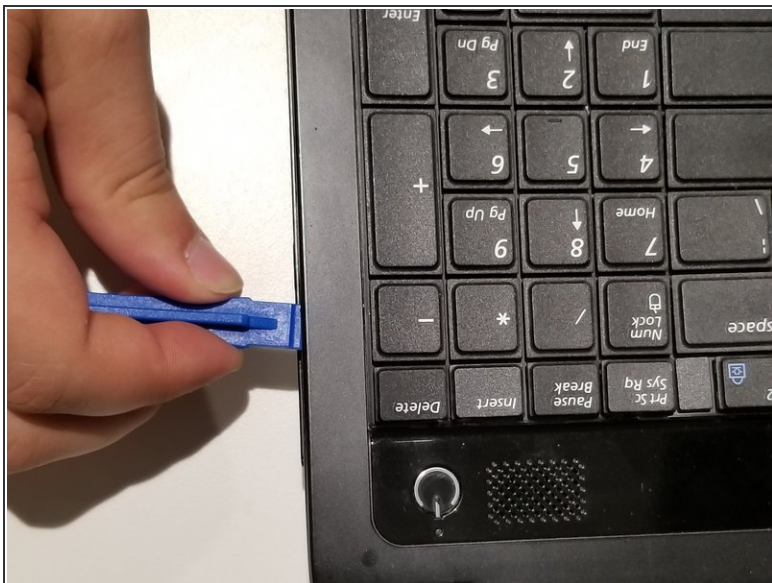
- Slide the optical drive out and remove it from the device.

Step 6 — Keyboard



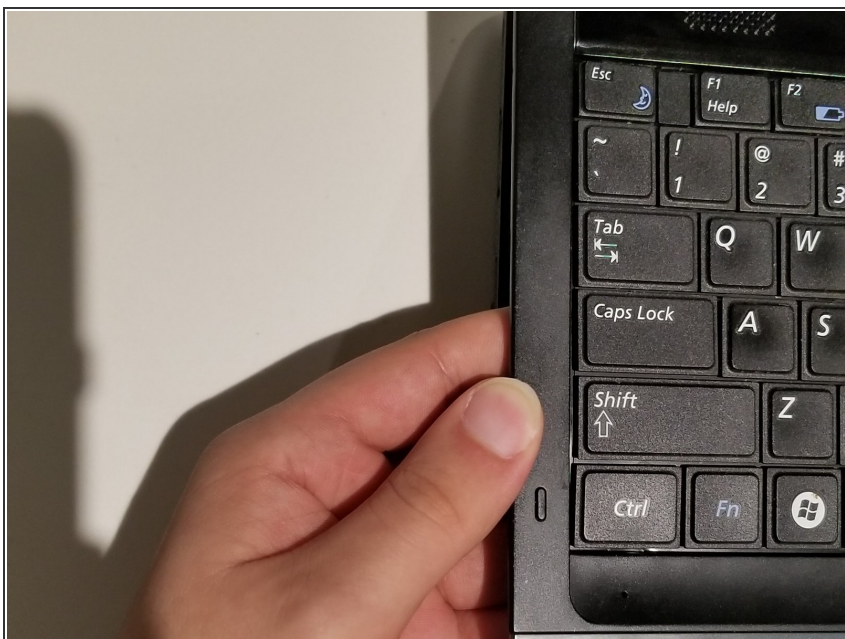
- Remove the two Phillips #0 screws labeled KBD.

Step 7



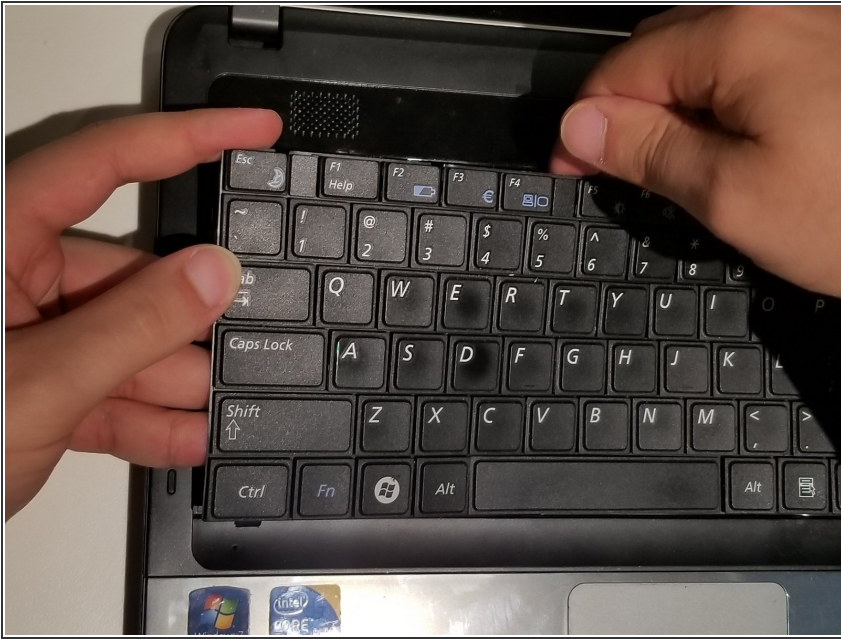
- Open top panel by inserting an Opening Tool and going around the entire panel.

Step 8



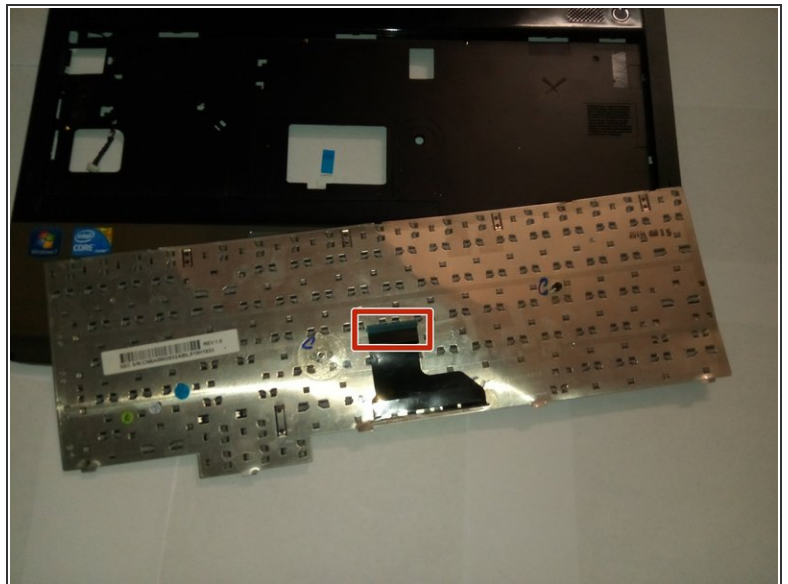
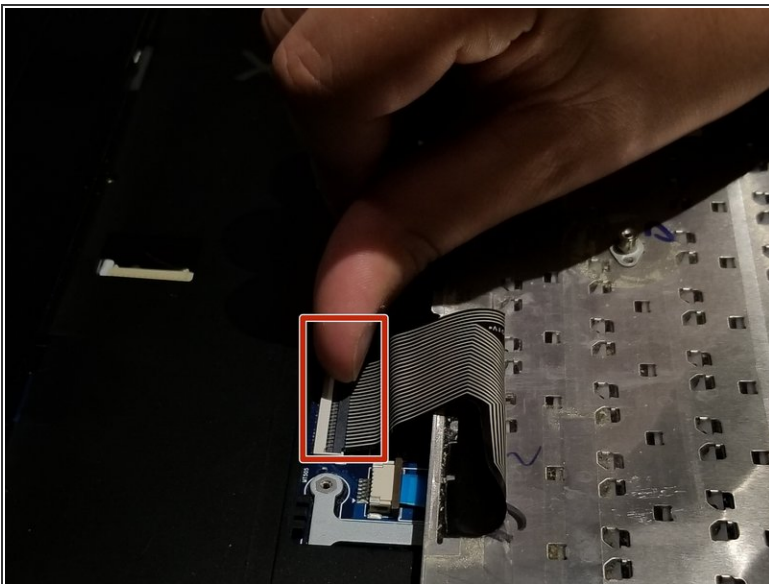
- With the panel open, pop the keyboard out with your fingers or an opening tool.
- ⚠ Make sure to pry the metal keyboard base and not the keycaps.

Step 9



- Now move your hand around the keyboard to remove the keyboard.

Step 10



- Disconnect the keyboard cable from the motherboard.

Step 11 — Front Panel



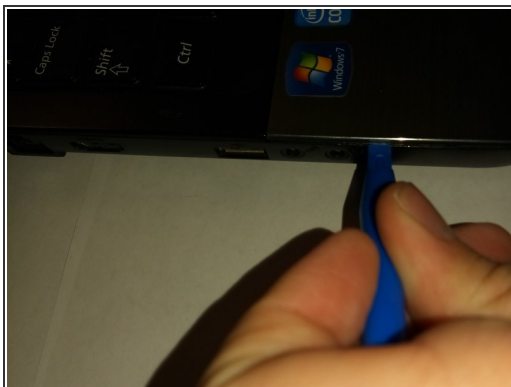
- Remove the two screws with a Phillips #00 screwdriver.

Step 12



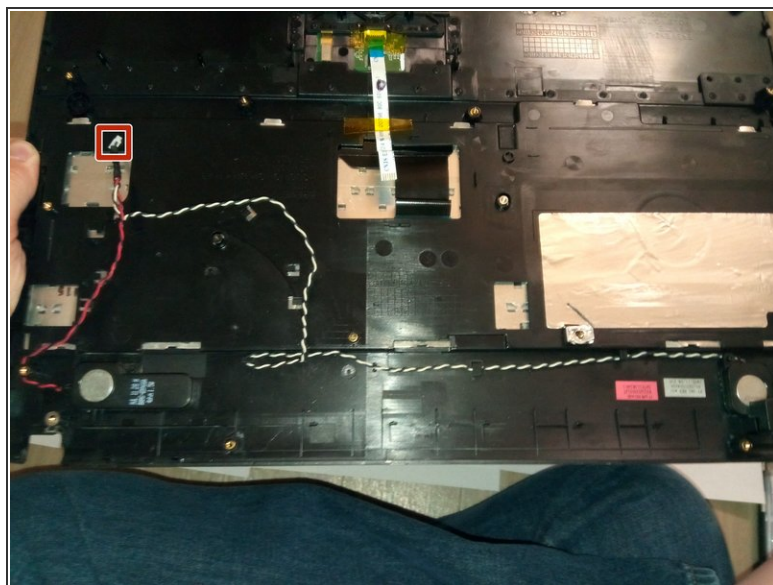
- Remove the highlighted screws with a Phillips #0 Screwdriver.

Step 13



- Pry the front panel away from the base with an Opening Tool.

Step 14



- Disconnect the speaker wire from the motherboard.

To reassemble your device, follow these instructions in reverse order.