



Samsung NP-RF411 Laptop Maintenance

Cleaning up and maintaining an old Samsung Laptop

Written By: Robbie Steele



INTRODUCTION

Given to us to find out whats happened to the keyboard (Sticky keys), thought it might be helpful to post a guide

TOOLS:

- [Small Phillips Head Screwdriver](#) (1)
 - [Spudger](#) (1)
Used to undo the Ribbon cables
 - [Phillips #2 Screwdriver](#) (1)
-

Step 1 — Laptop



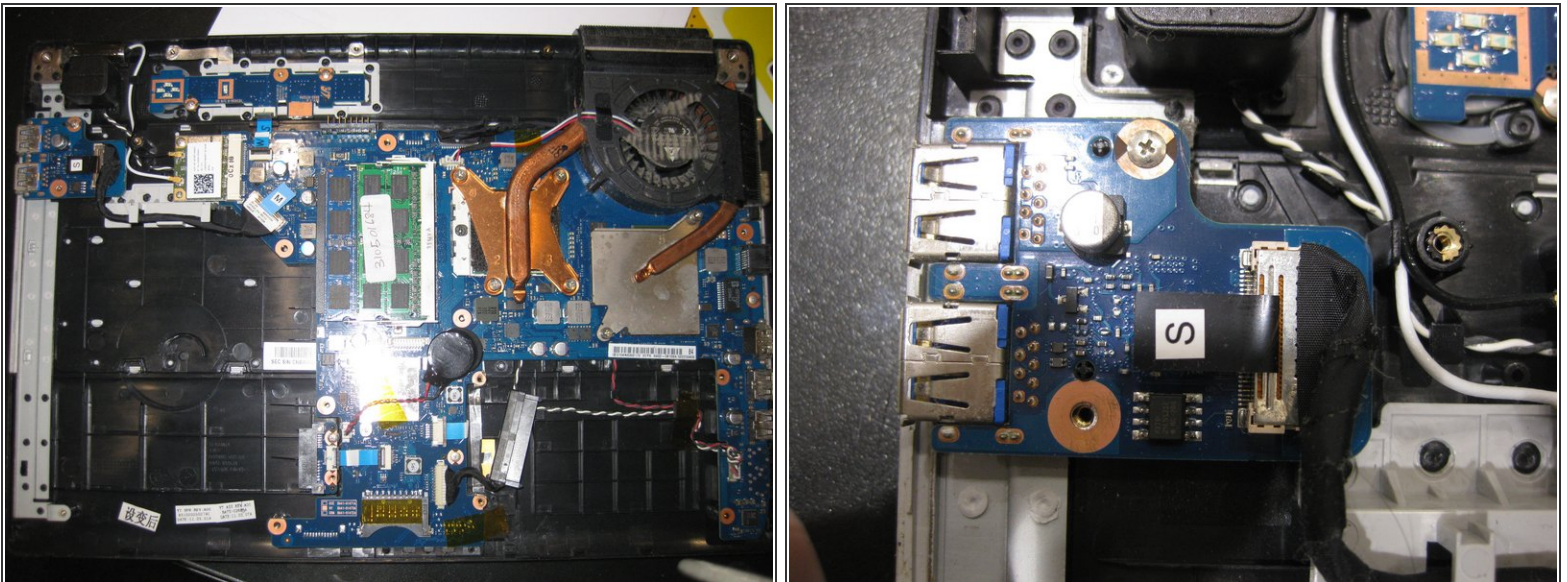
- Quite a simple stage. There are a total of 19 screws to be removed from the bottom of the casing.
 - Three for HDD
 - One for Ram/HDD Cover
 - One for ODD
 - one hidden under a rubber foot at the front of the laptop.
 - Three under the Battery
- Make sure you remove the fake SD Card at the front, because this can stall you.

Step 2



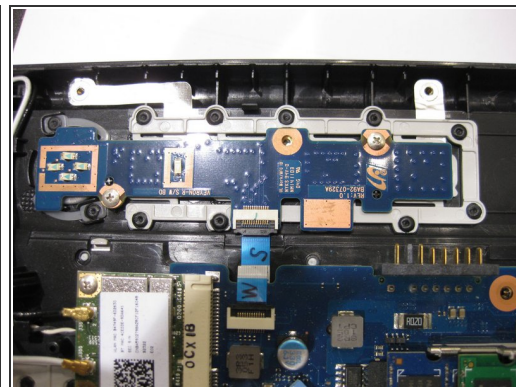
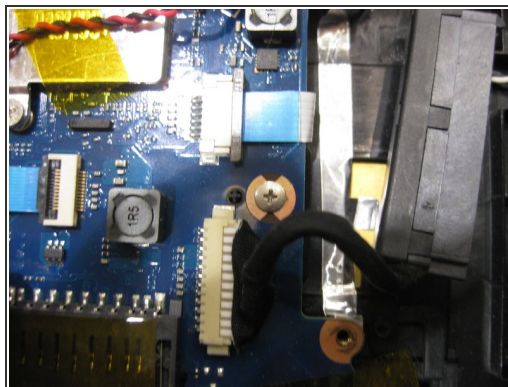
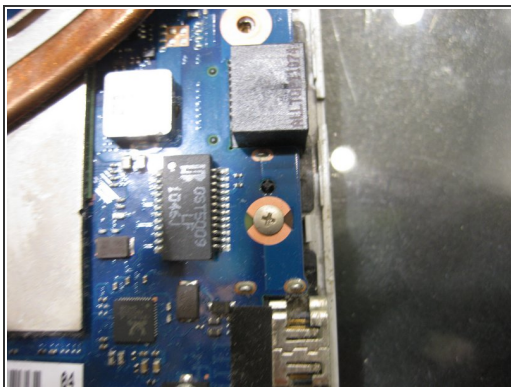
- Once the cover is off, there are three screws holding the main PCB down.
- Screws for the HDD
- Battery. DC 11.1V 57W

Step 3



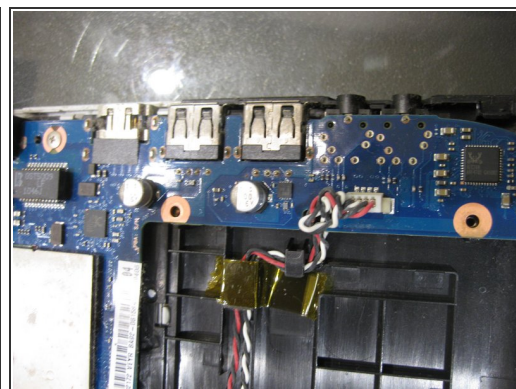
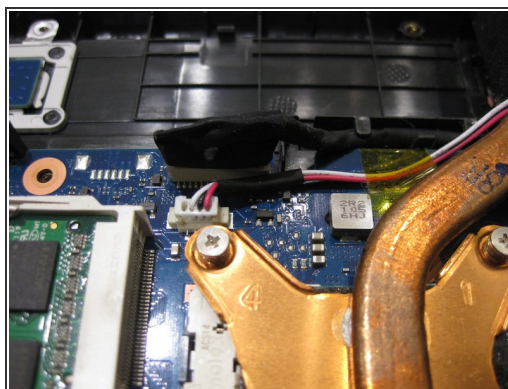
- This shows the main PCB
- USB 3.0 Ports

Step 4



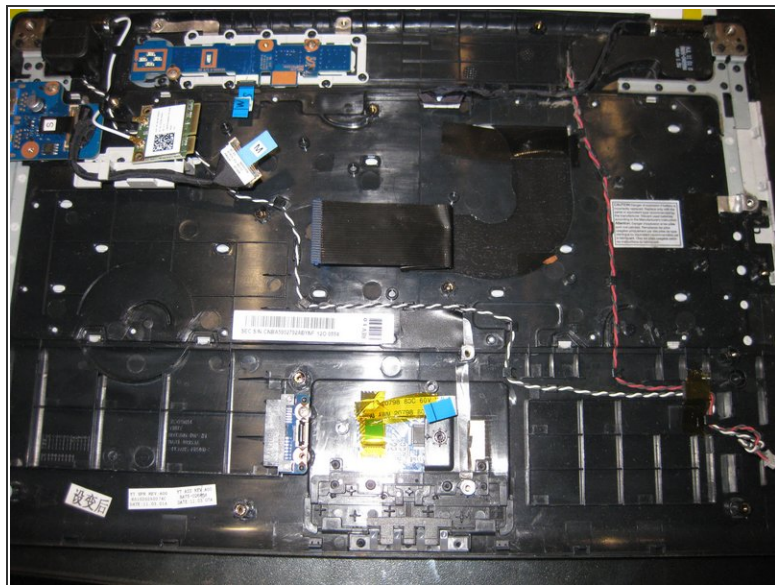
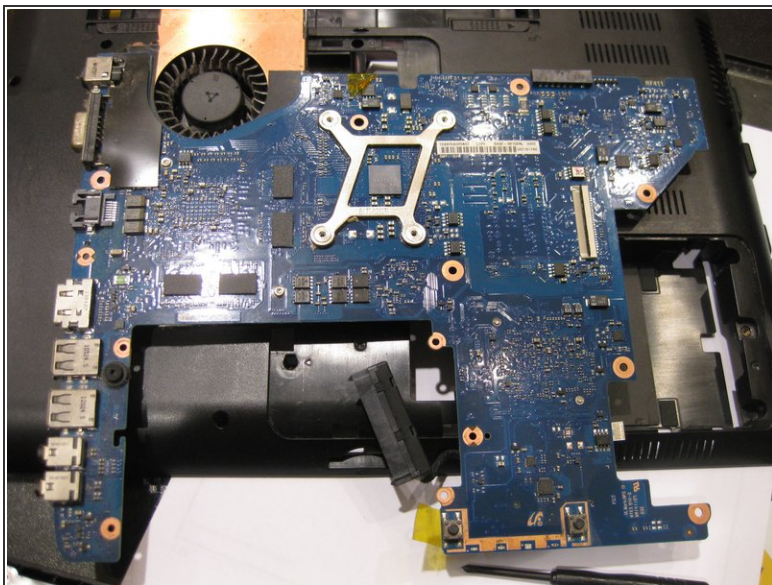
- locations of the main PCB / WIFI card screws.

Step 5



- removing the Main PCB means detaching the cable marked M, W the big fat black cable at the top and the white connector at the right usb side.

Step 6



- Here's the underside of the main PCB, all cables detached.
- With the PCB removed this is all you have left.

To reassemble your device, follow these instructions in reverse order.