



Samsung NP270E5E-K03US Hard Drive Replacement

Use this guide to replace a damaged hard drive on the Samsung NP270E5E-K03US.

Written By: Kyle Golden



INTRODUCTION

In this guide you will learn how to remove the back cover in order to access and replace a damaged or broken hard drive.



TOOLS:

- [Phillips #0 Screwdriver](#) (1)
-

Step 1 — Battery



- Begin with the laptop lying to its back revealing its underside.
- Locate the two latches on the bottom of the laptop. Slide the latches inward until a faint click is heard.

Step 2



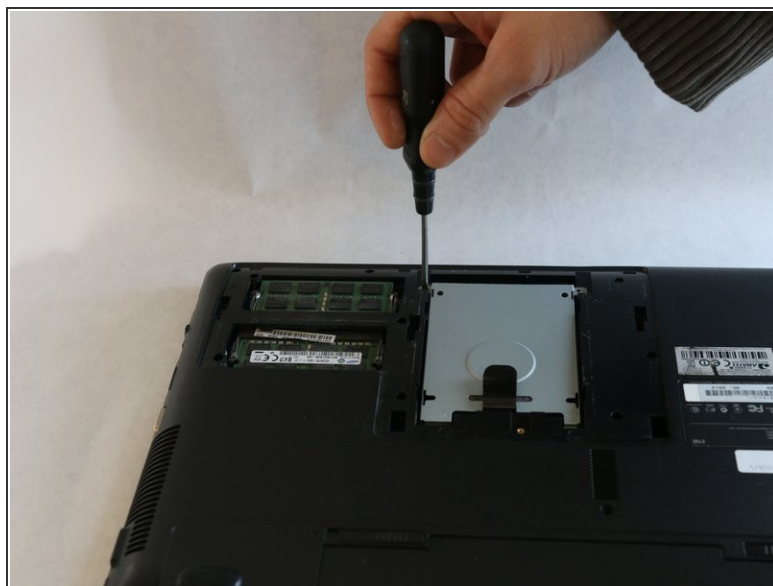
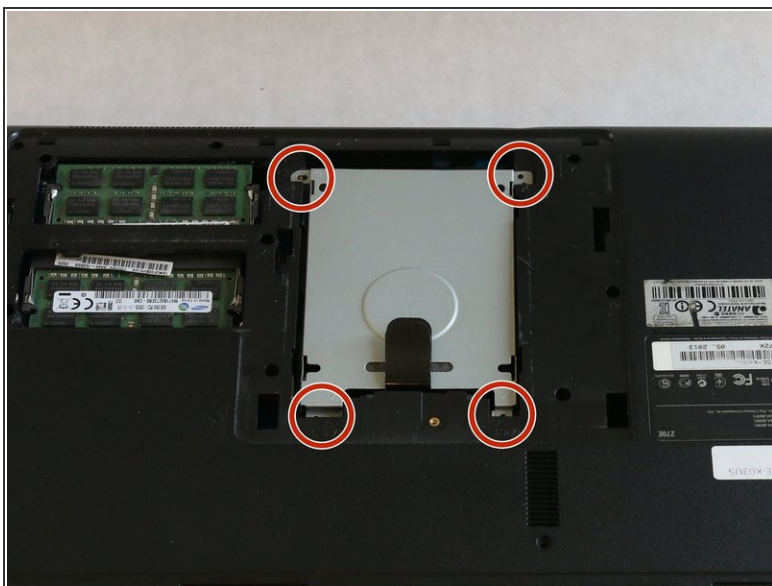
- Completely remove the battery from the laptop.

Step 3 — Hard Drive



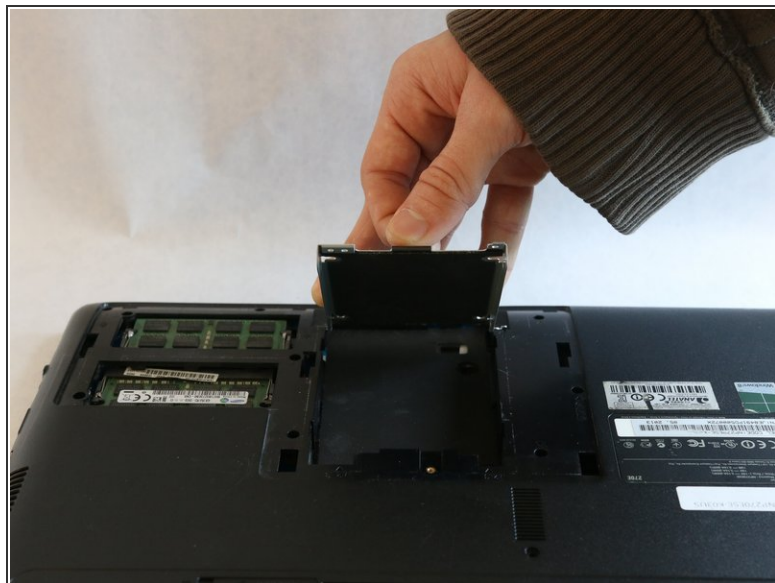
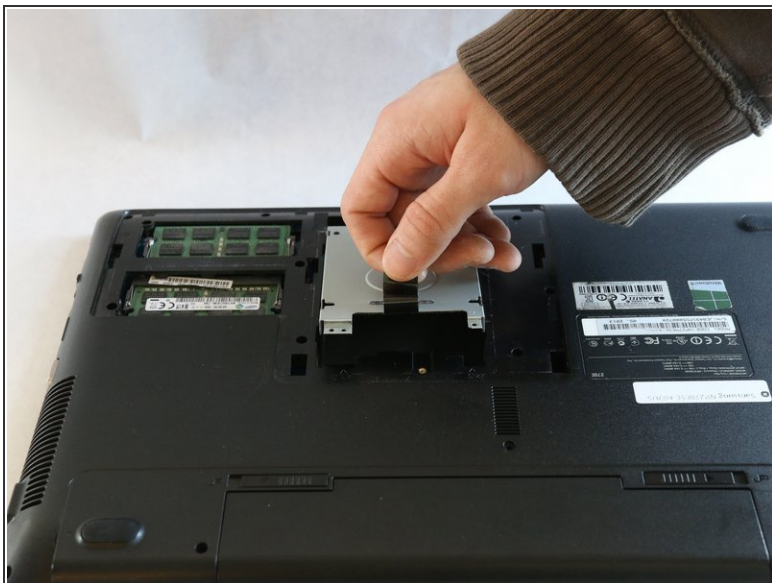
- Unscrew the 4mm screw, and slide the cover off away from the computer to reveal the housing for the hard drive and RAM boards.

Step 4



- Locate the gray hard drive cover, and remove the four corner 3.5mm screws.

Step 5



- Lift the hard drive cover by pulling upwards on the removal handle.
- You can now remove the hard drive from the laptops housing freeing up space to replace your damaged or broken hard drive with a new hard drive.

To reassemble your device, follow these instructions in reverse order.