



Samsung NP300E5C Hard Drive Replacement

If your hard drive is causing you issues, follow this guide to replace it.

Written By: aliahsan95



INTRODUCTION

A faulty hard drive can be the underlying cause of many issues with a laptop. This guide will take you through the steps necessary to replace the hard drive so you can get back to using your computer.



TOOLS:

- [Phillips #000 Screwdriver](#) (1)
- [Phillips #1 Screwdriver](#) (1)



PARTS:

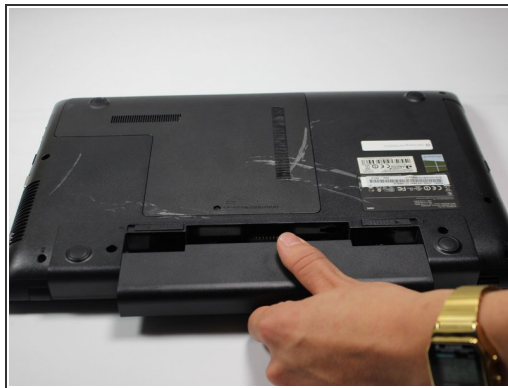
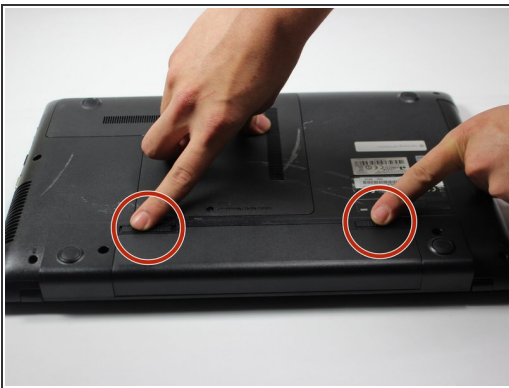
- [1 TB SSD / Upgrade Bundle](#) (1)
- [250 GB SSD / Upgrade Bundle](#) (1)
- [500 GB SSD / Upgrade Bundle](#) (1)
- [2 TB SSD / Upgrade Bundle](#) (1)

Step 1 — Battery



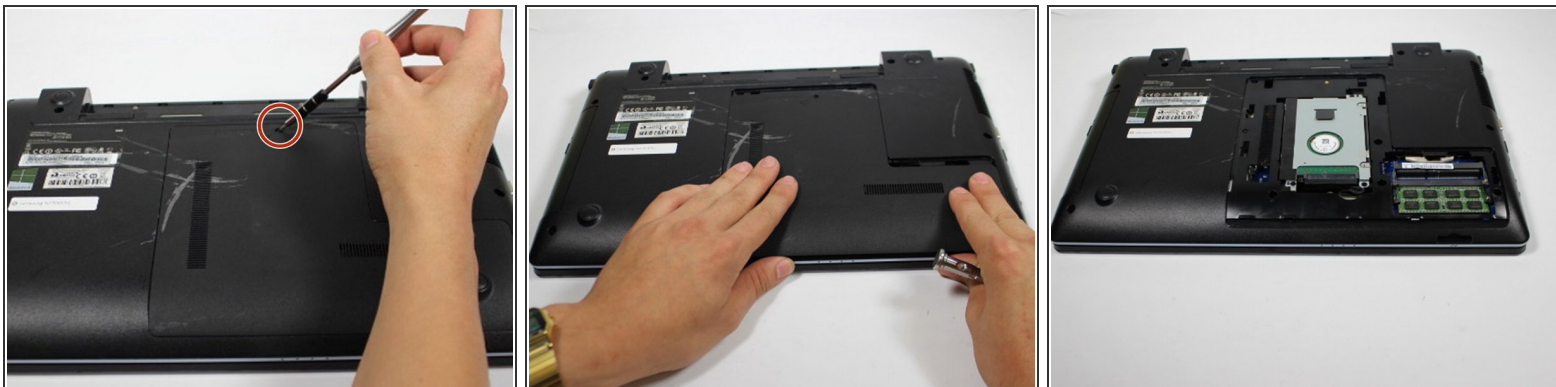
- Lay laptop down so that the bottom is facing the sky.

Step 2



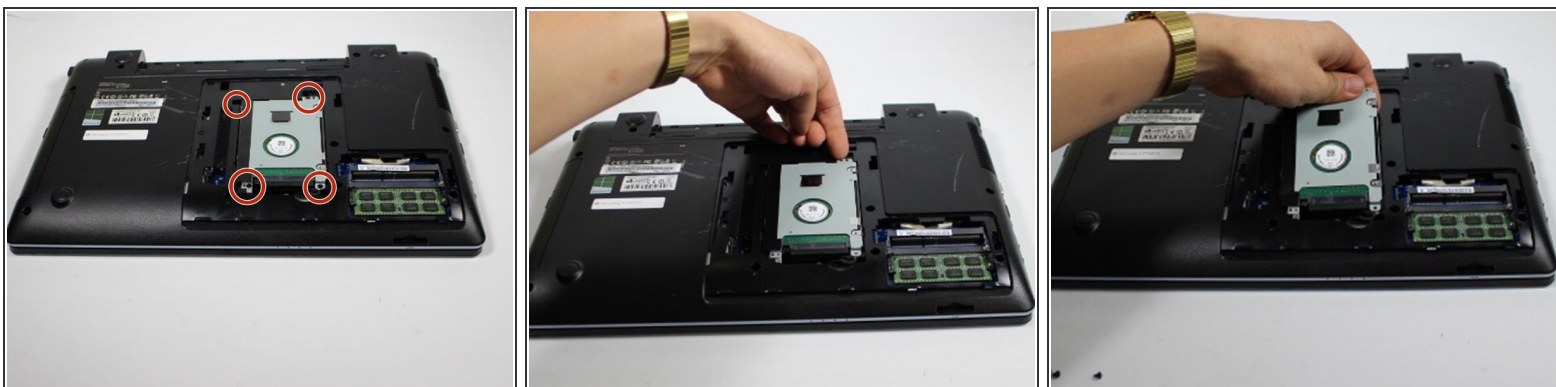
- Push both tabs away from the center of the device.
- While both are in the fully unlocked position, slide the battery out.

Step 3 — Hard Drive



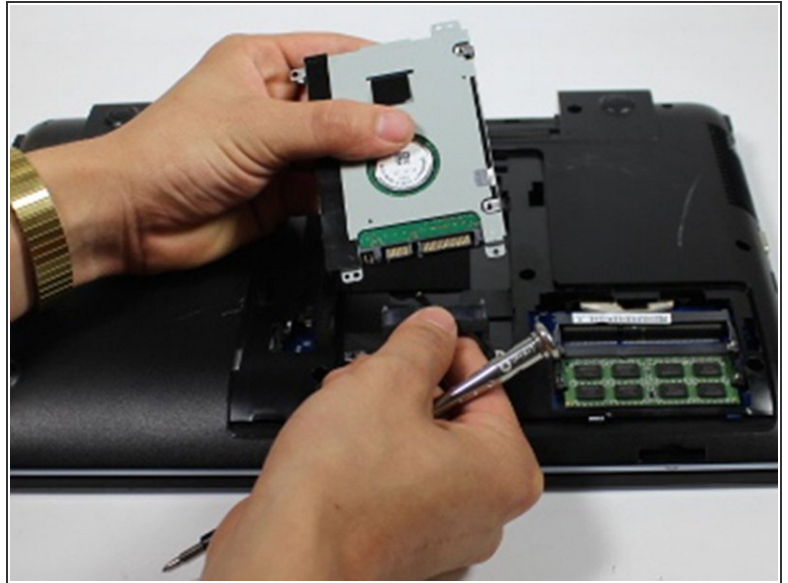
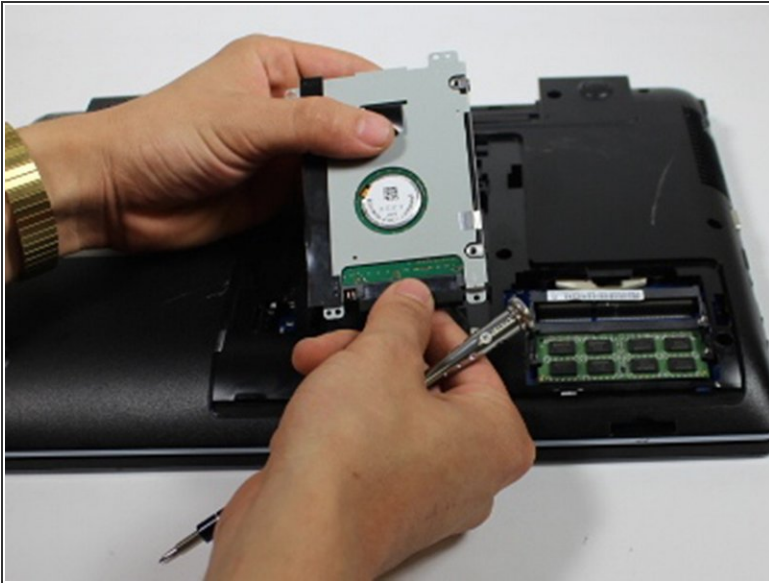
- Remove this 4 mm Phillips #8 screw using a Phillips #00 screwdriver.
- Firmly, but gently pull the cover towards you.
- After moving the cover about 2 centimeters, you can lift and remove it.

Step 4



- Remove these four 4 mm Phillips #8 screws using a Phillips #00 screwdriver.
- Gently lift the hard drive up, however do not remove it.

Step 5



- Firmly grasp the base of the connector at the bottom of the hard drive.
- Gently pull the connector off to free the hard drive.

To reassemble your device, follow these instructions in reverse order.