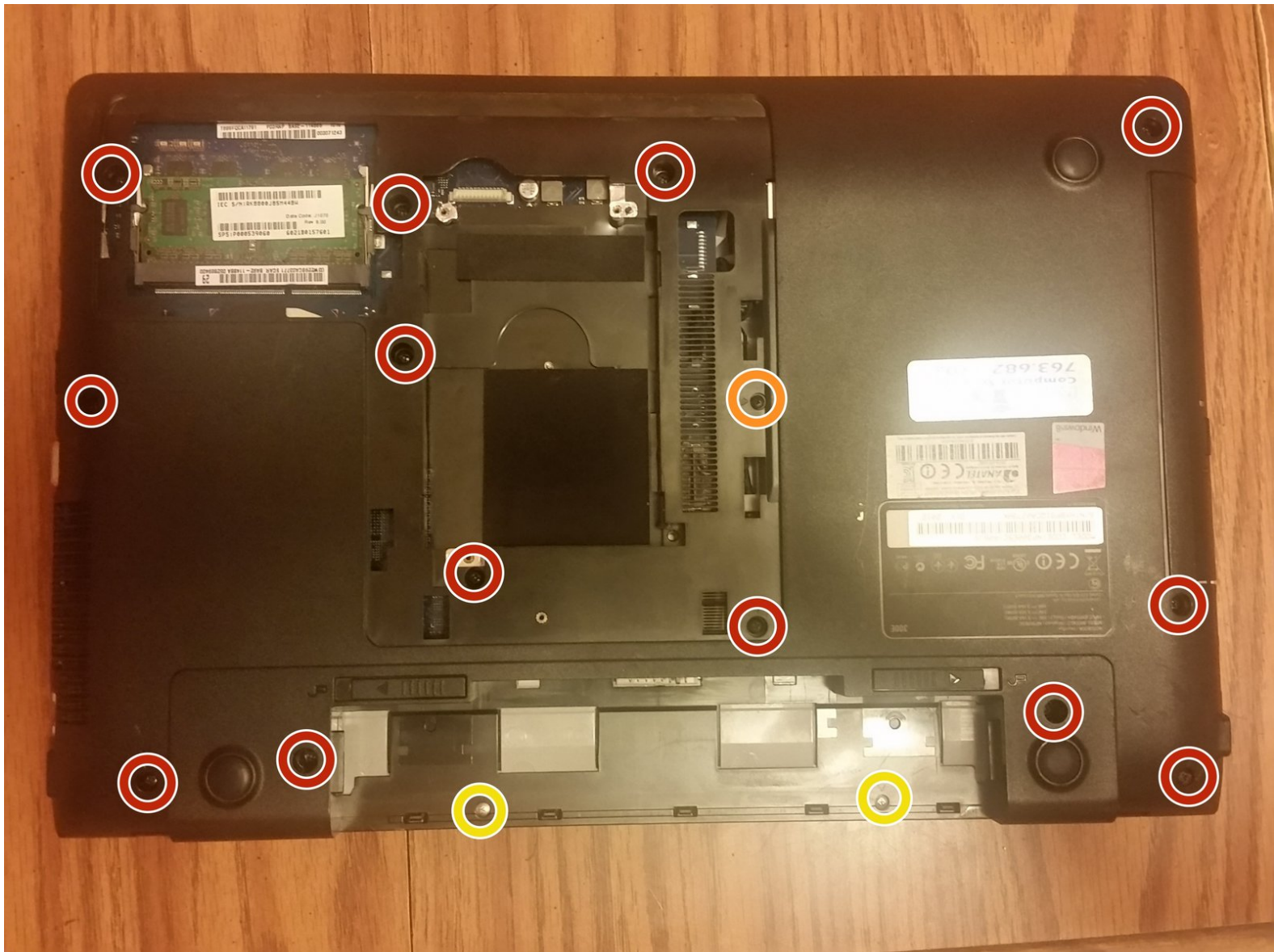




Samsung NP300E5C-A09US Motherboard Replacement

This guide teaches you how to replace the motherboard in a Samsung NP300E5C laptop.

Written By: Joseph Sctbunio



INTRODUCTION

This guide teaches you how to replace the motherboard in a Samsung NP300E5C laptop.



TOOLS:

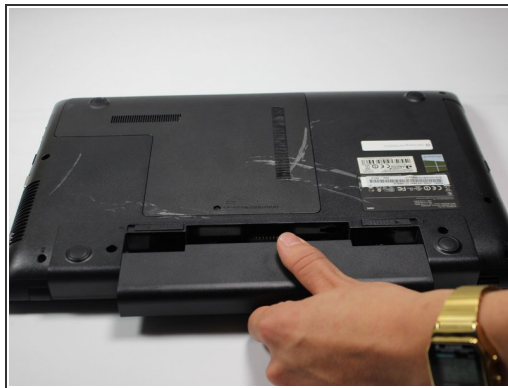
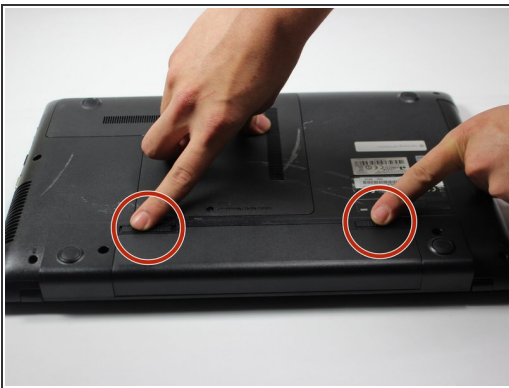
- [Phillips #000 Screwdriver](#) (1)
 - [Phillips #1 Screwdriver](#) (1)
-

Step 1 — Battery



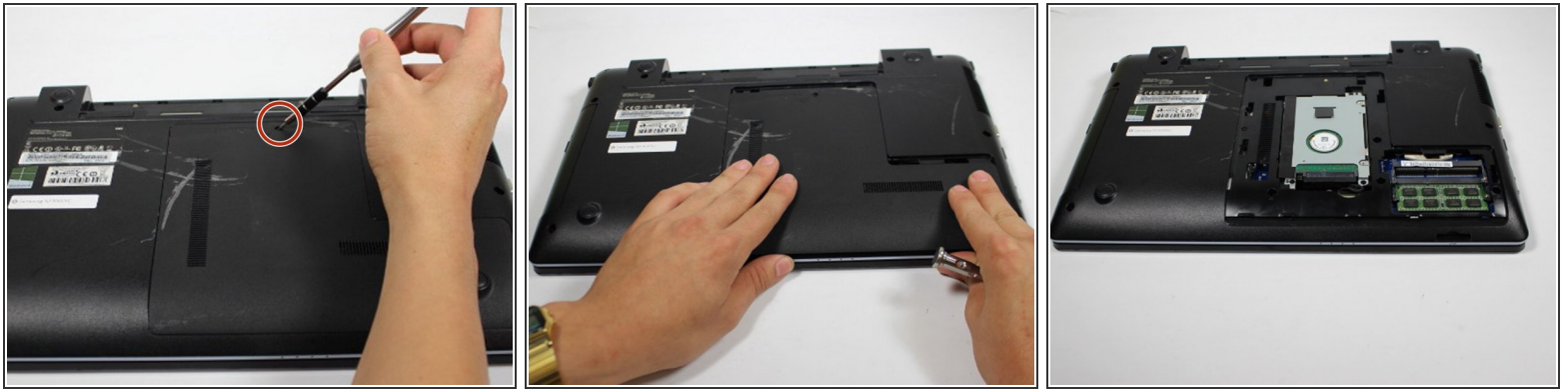
- Lay laptop down so that the bottom is facing the sky.

Step 2



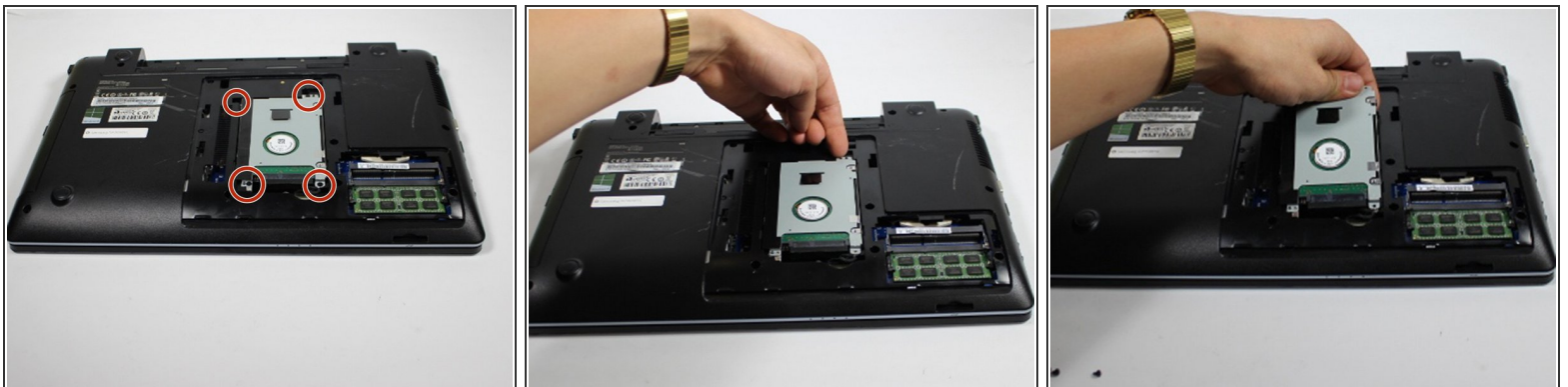
- Push both tabs away from the center of the device.
- While both are in the fully unlocked position, slide the battery out.

Step 3 — Hard Drive



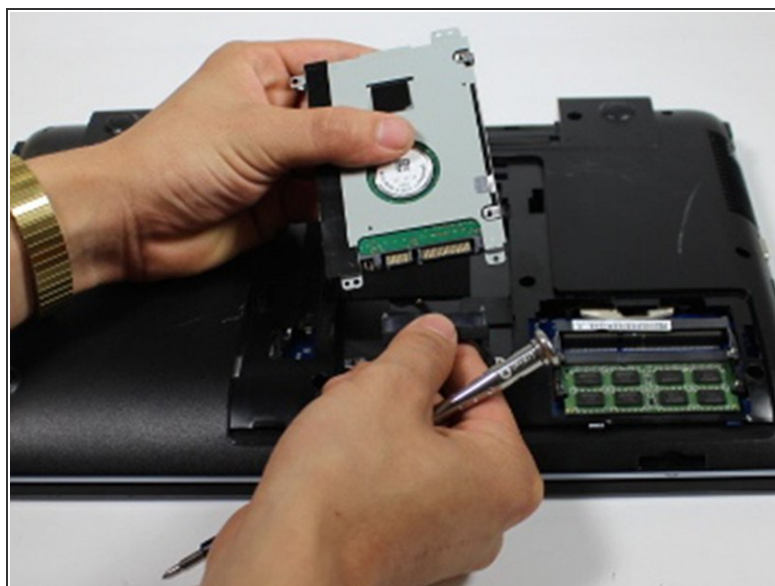
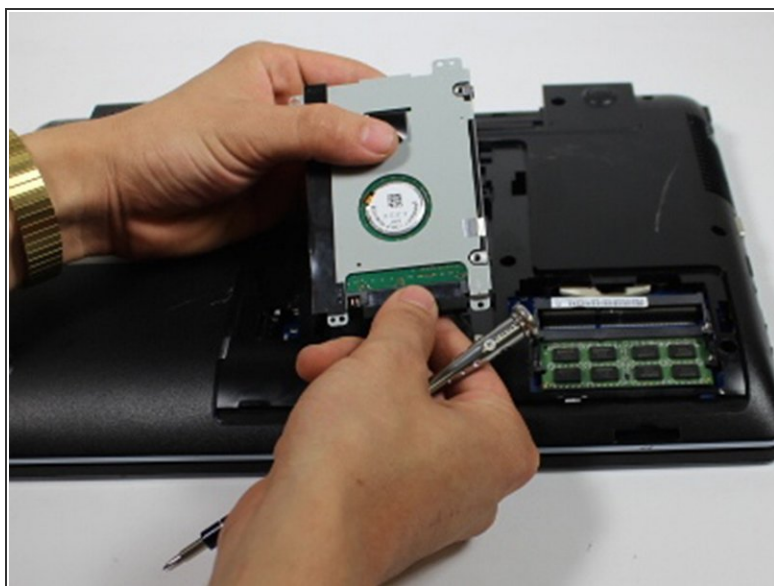
- Remove this 4 mm Phillips #8 screw using a Phillips #00 screwdriver.
- Firmly, but gently pull the cover towards you.
- After moving the cover about 2 centimeters, you can lift and remove it.

Step 4



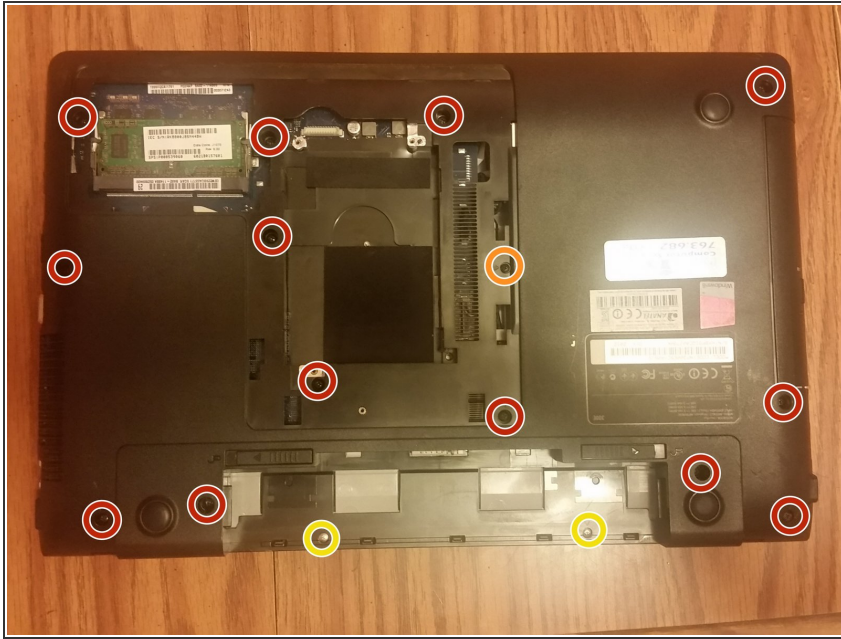
- Remove these four 4 mm Phillips #8 screws using a Phillips #00 screwdriver.
- Gently lift the hard drive up, however do not remove it.

Step 5



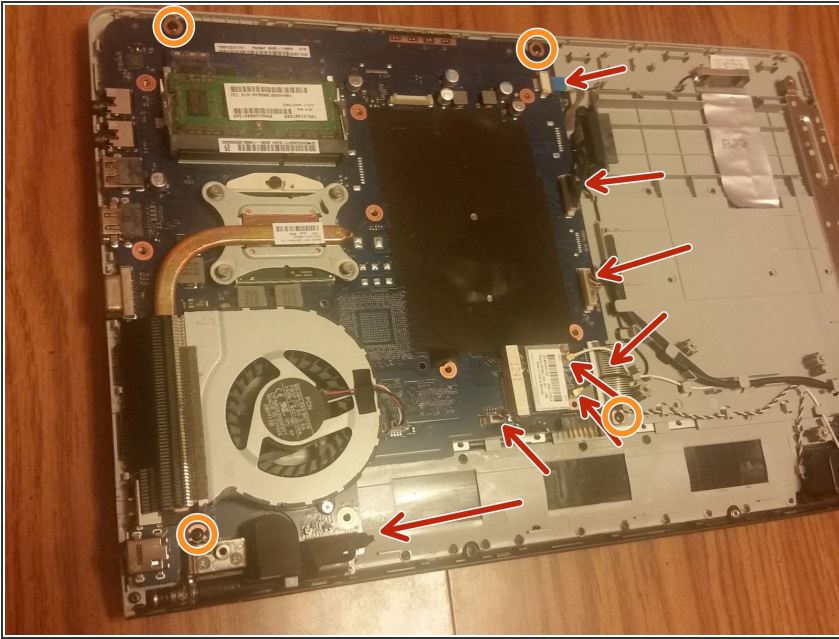
- Firmly grasp the base of the connector at the bottom of the hard drive.
- Gently pull the connector off to free the hard drive.

Step 6 — Remove base



- Remove the thirteen Philips screws securing the base to the palmrest.
 - Remove the screw securing the optical drive.
 - Remove the two small Philips screws securing the base to the palmrest.
 - Insert a spudger into the separation between the palmrest and the base, in the front of the laptop.
- i** On this laptop, the base is what comes off of the palmrest, not the other way around, like on most laptops, so once you've got enough leverage, have the laptop flipped upside-down like in the picture, and pull up on the base.
- !** Don't try to separate the trim around the keyboard!

Step 7 — Remove motherboard



- Remove all connectors from the motherboard.
- Remove the screws securing the motherboard to the palmrest.
- Lift the motherboard out. Remove all components that are connected to the motherboard, such as the wireless card, RAM, CPU, and CPU cooler, to the replacement motherboard. You're done!

To reassemble your device, follow these instructions in reverse order.