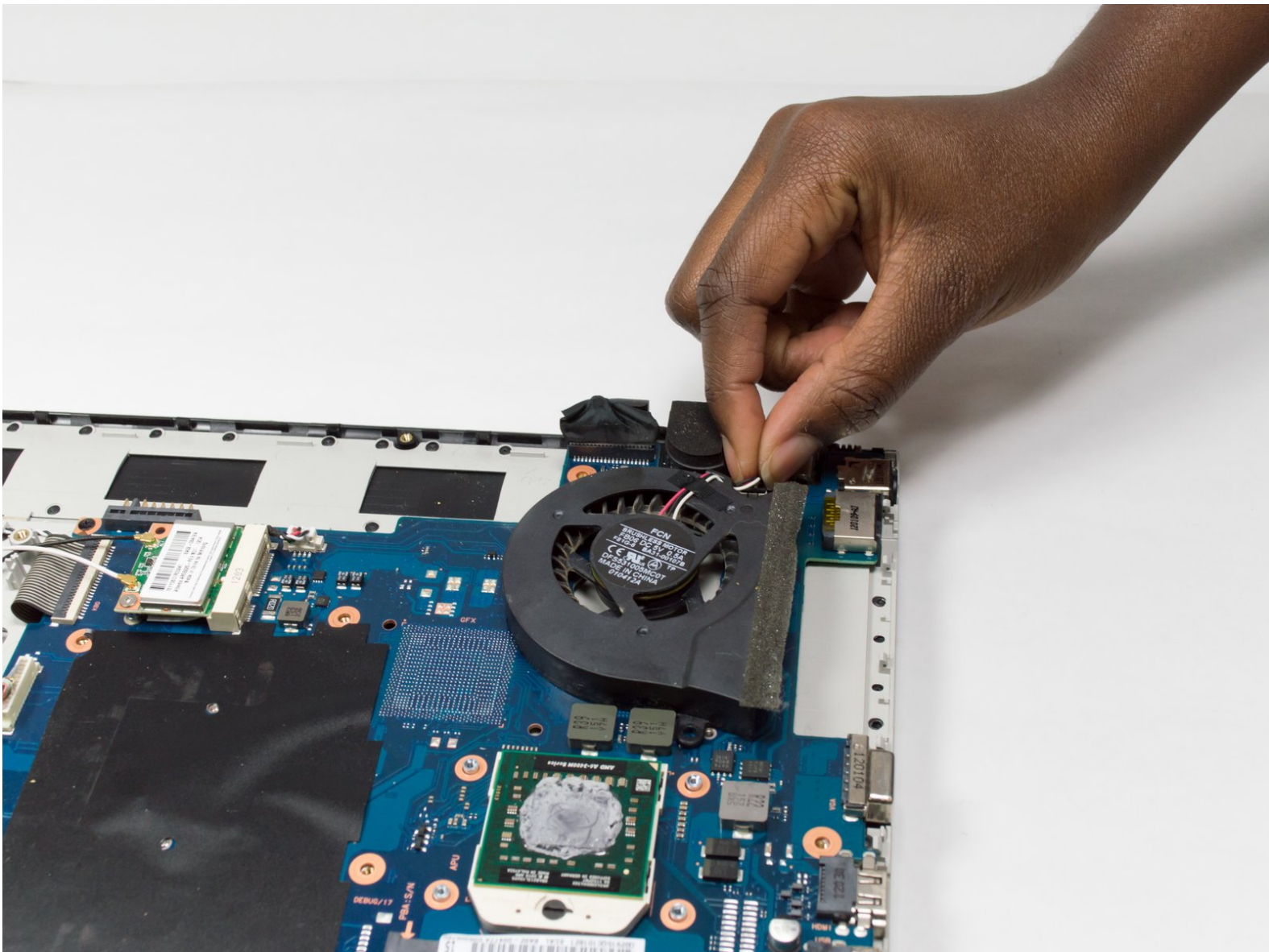




Samsung NP305E5A-A03US Fan Replacement

This guide will help you through the process of replacing a malfunctioning fan.

Written By: Kris Stobbe



INTRODUCTION

This guide will help you replace your fan. You may want to use this guide if your computer's fan [stops running](#).



TOOLS:

- [iFixit Opening Tools](#) (1)
 - [Phillips #0 Screwdriver](#) (1)
-

Step 1 — Battery



- ⓘ Be sure to power down your laptop before replacing your battery.
- Turn your laptop upside down so that the battery component is facing you.

Step 2



- Place your thumbs on the lock tabs.
- Slide the tabs with your thumbs in an outward direction (in the direction of the arrows).
- ⓘ You should hear a click when you properly slide the tabs all the way.

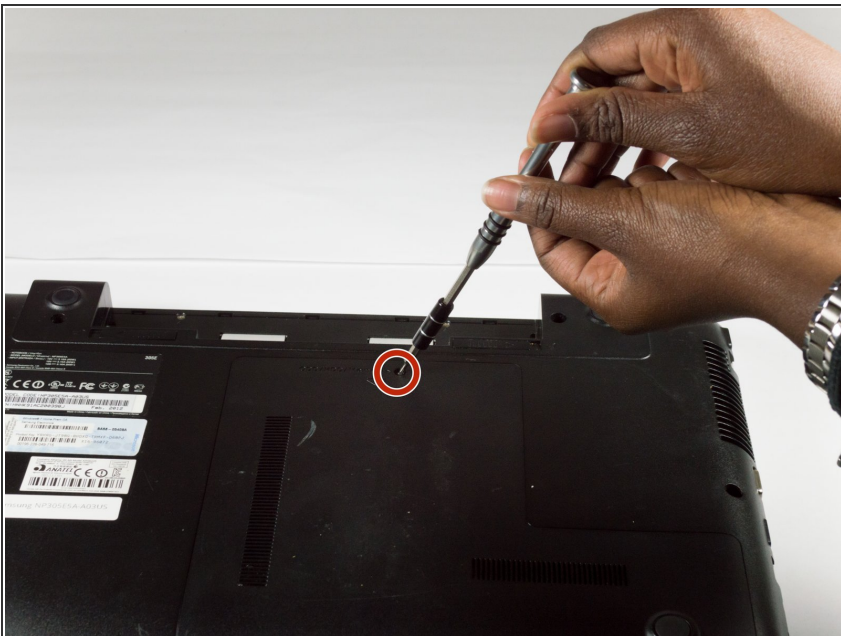
Step 3



- Pull the battery out of the laptop towards yourself to safely remove the battery.

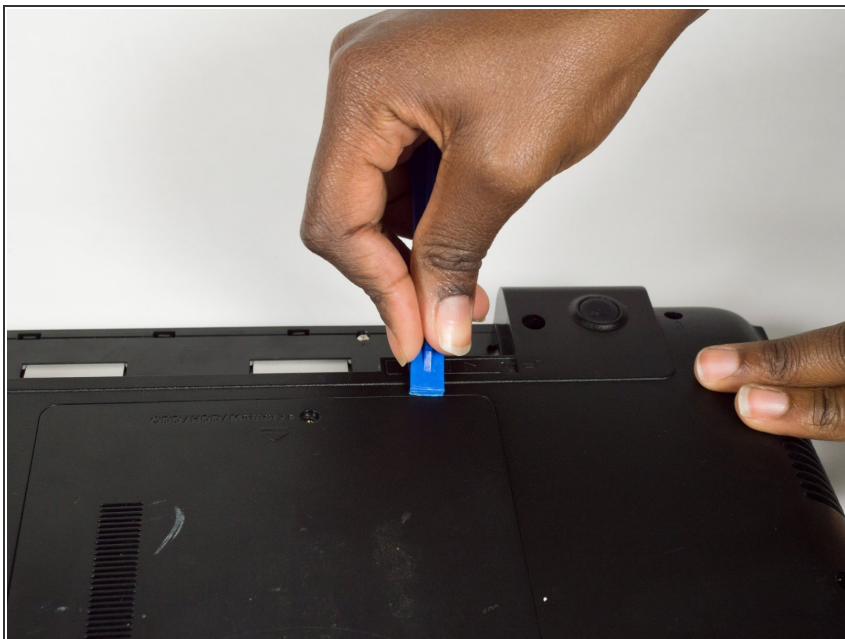
⚠ If you are discarding the battery, please do not throw it away in the trash. Instead find a local battery recycling facility that will not damage the environment.

Step 4 — Hard Drive



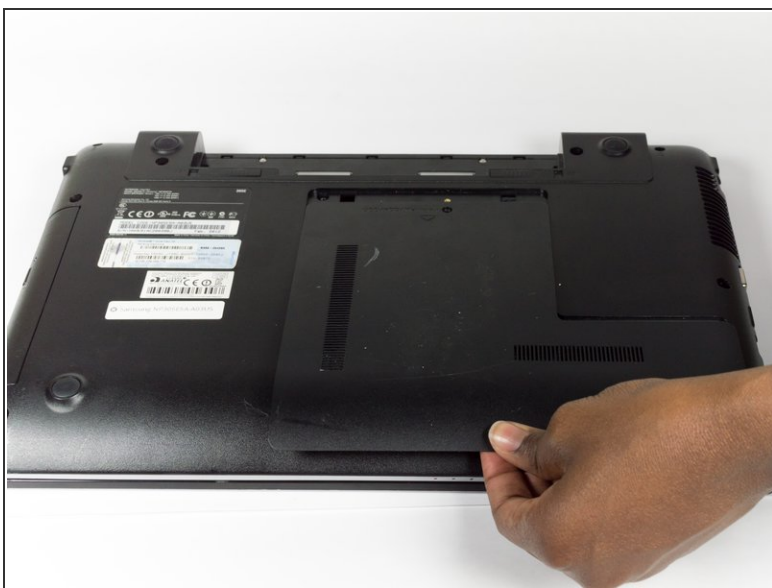
- Unscrew the 3.5mm screws using a Phillips J0 Screwdriver by rotating the screwdriver in the counter clockwise direction.

Step 5



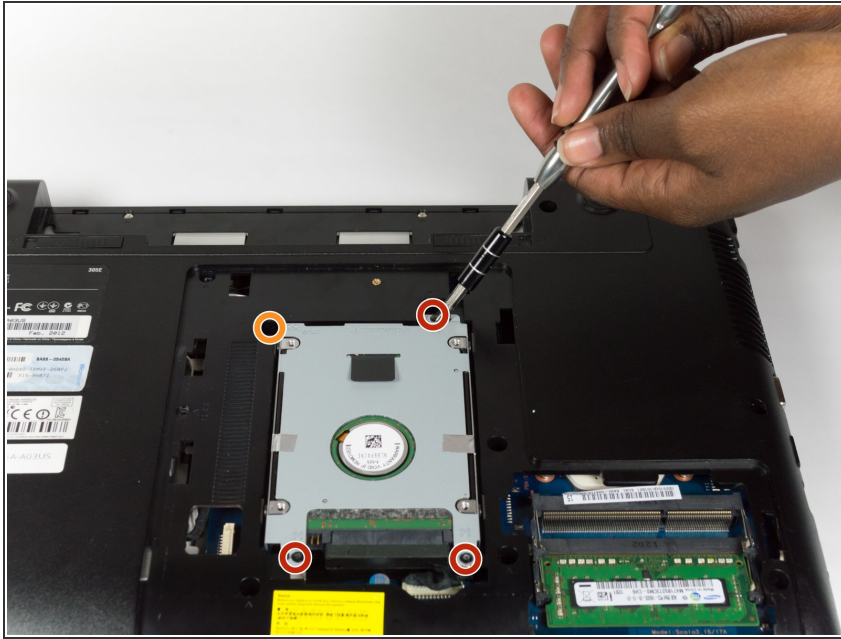
- Wedge the plastic opening tool between the L-shaped back panel to slide the panel off.
- ⓘ Note this may take force. If you have difficulties using the plastic opening tool, try to use your hands to pull the panel off.

Step 6



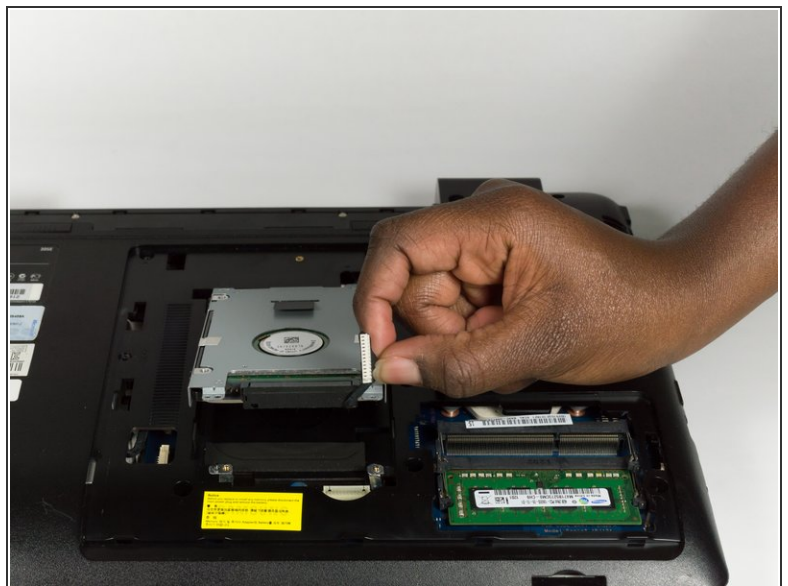
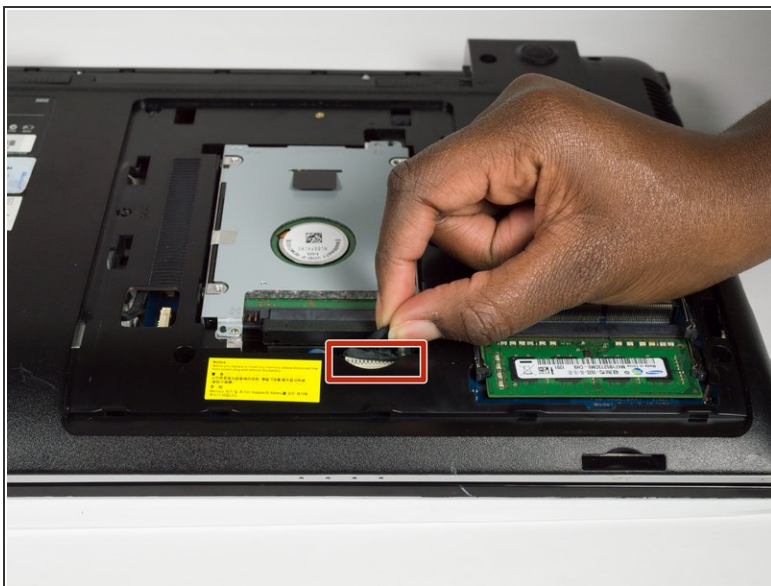
- Pull the panel towards you to remove the panel.

Step 7



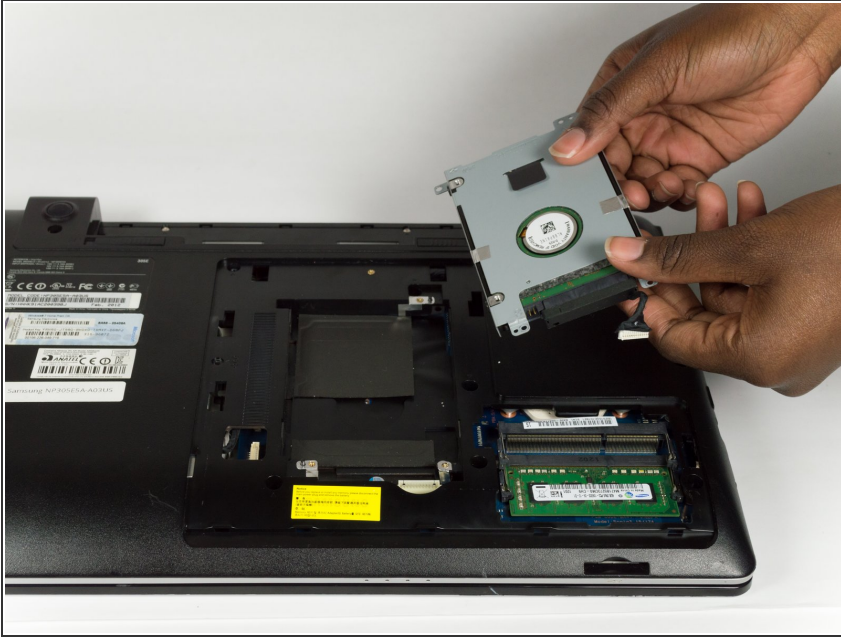
- Unscrew the three 3.5mm screws using a Phillips J0 Screwdriver by rotating the screwdriver in the counter clockwise direction.
- Unscrew the one 4.45mm screws using a Phillips J0 Screwdriver by rotating the screwdriver in the counter clockwise direction.

Step 8



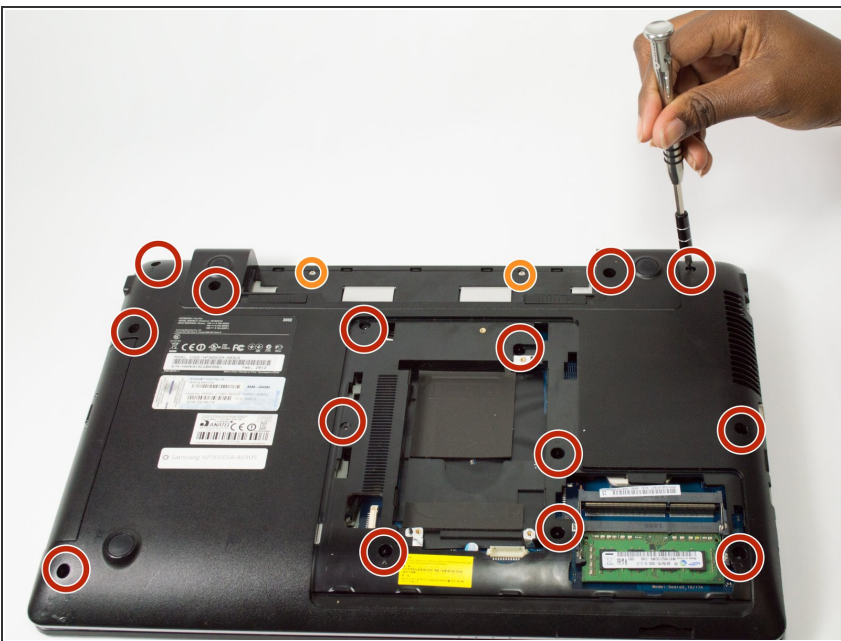
- Pull the cord that connects the Hard Drive to the Motherboard to disconnect it.

Step 9



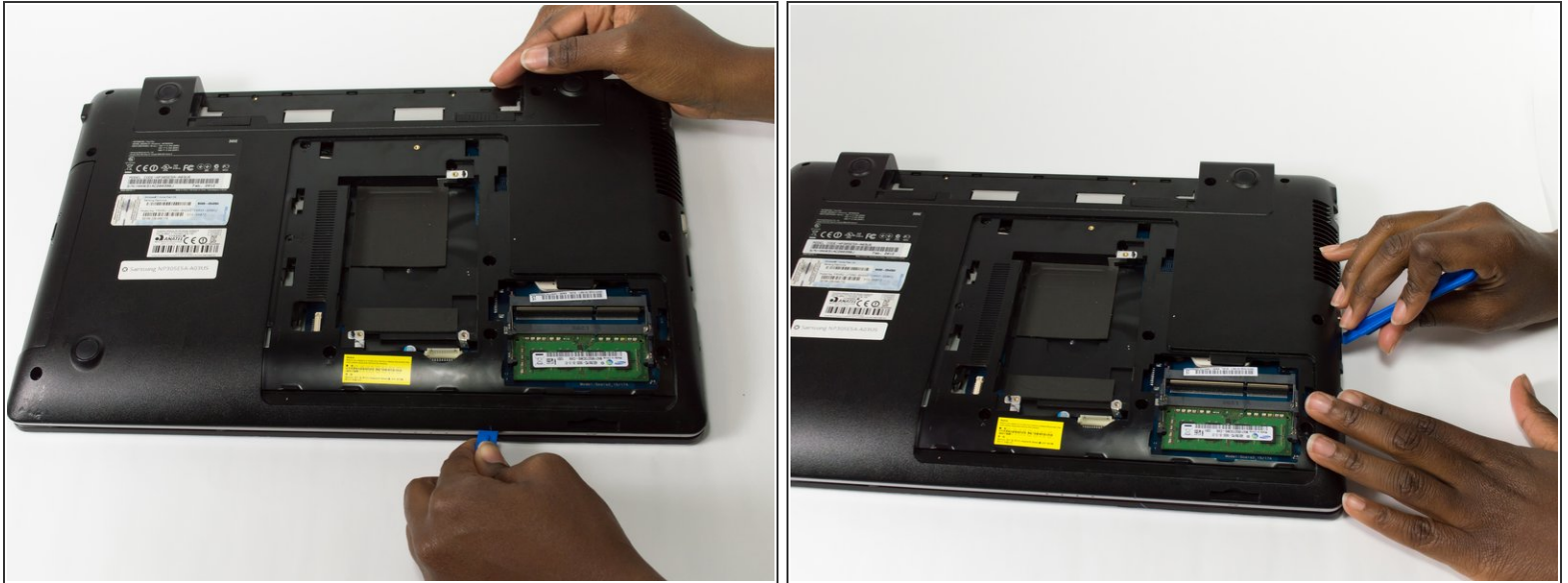
- Remove the Hard Drive by lifting it towards you.

Step 10 — Optical Drive



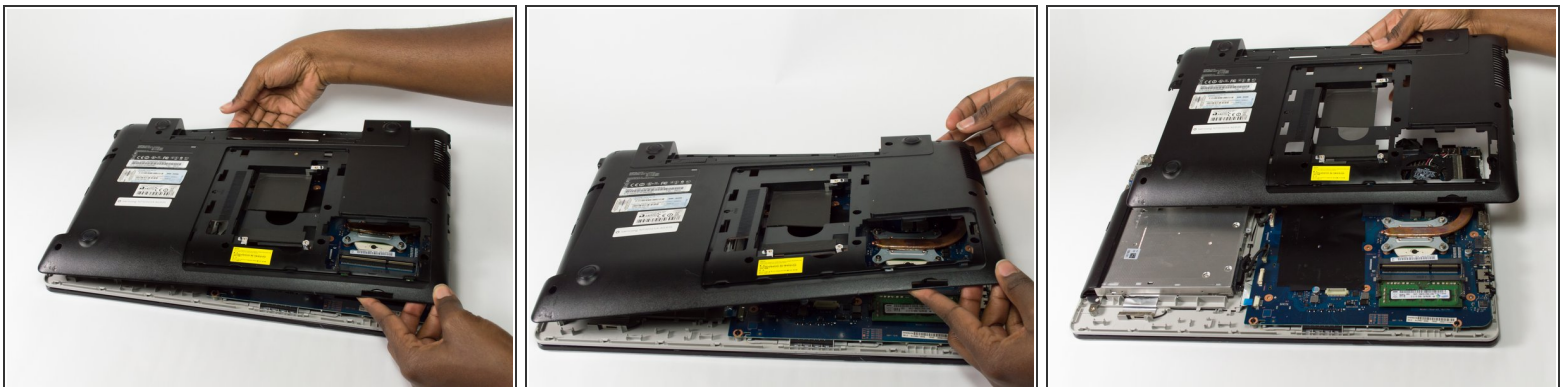
- Unscrew the fourteen 9.5mm screws using a Phillips J0 Screwdriver by rotating the screwdriver in the counter clockwise direction.
- Unscrew the two 3.5mm screws using a Phillips J0 Screwdriver by rotating the screwdriver in the counter clockwise direction.

Step 11



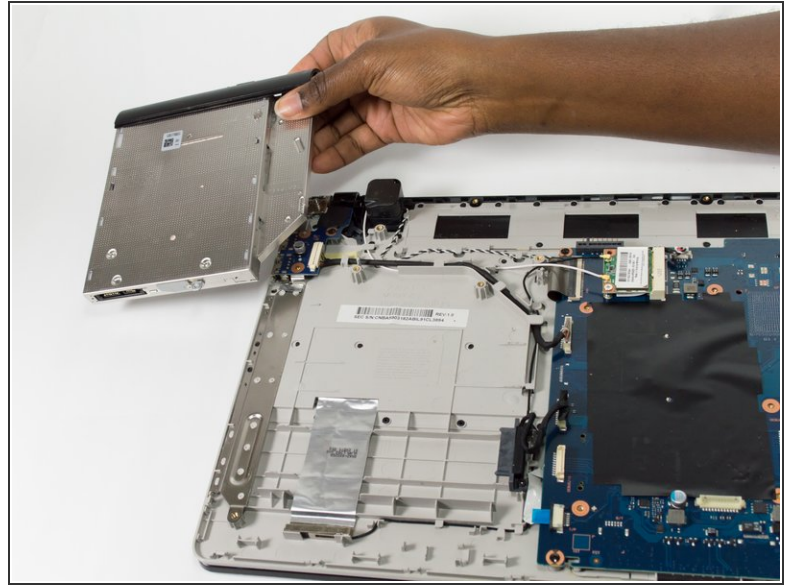
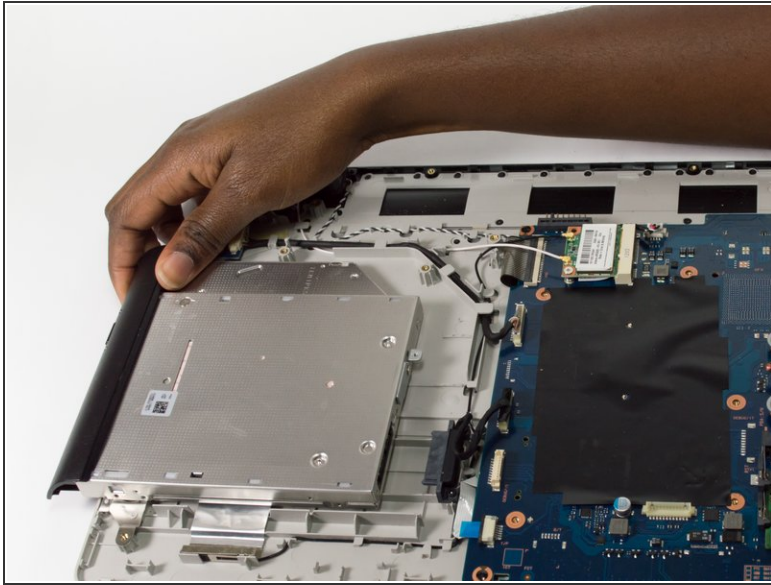
- Insert the plastic opening tool between the seam of the back panel and the laptop.
- Slide the plastic opening tool along the seam to loosen the back panel from the laptop.
- ⓘ It may be difficult to slide the plastic opening tool along the seam, so you may have to apply some force.

Step 12



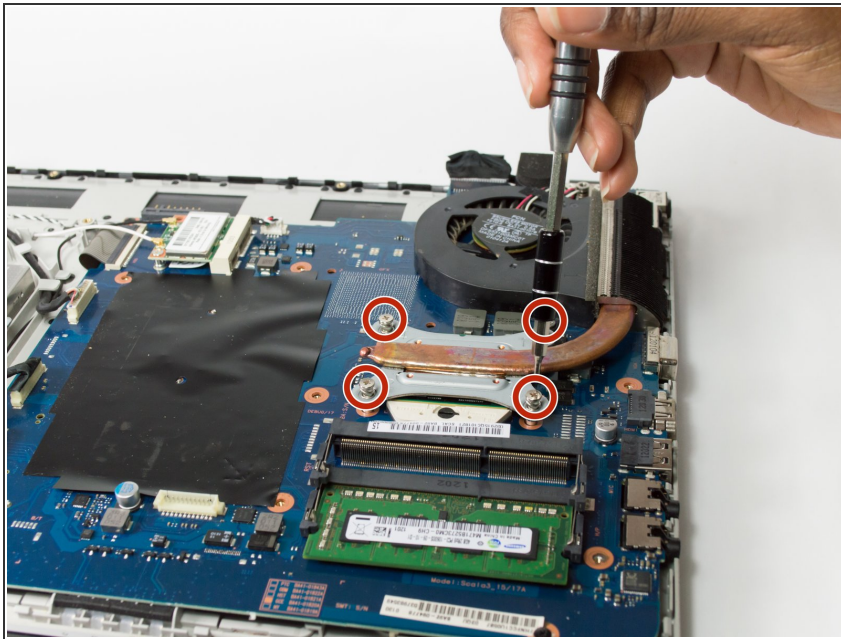
- Remove the Back Panel by lifting it towards you.
- ⓘ It may take some force to remove the Back Panel.

Step 13



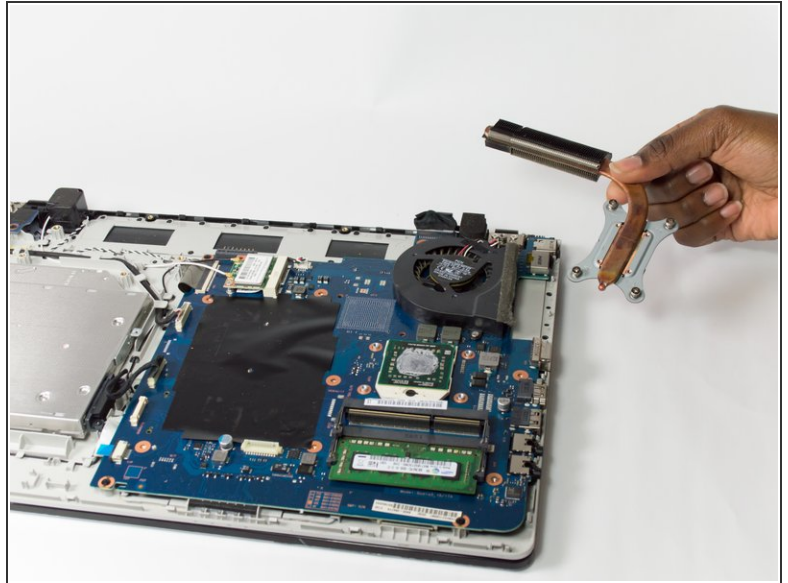
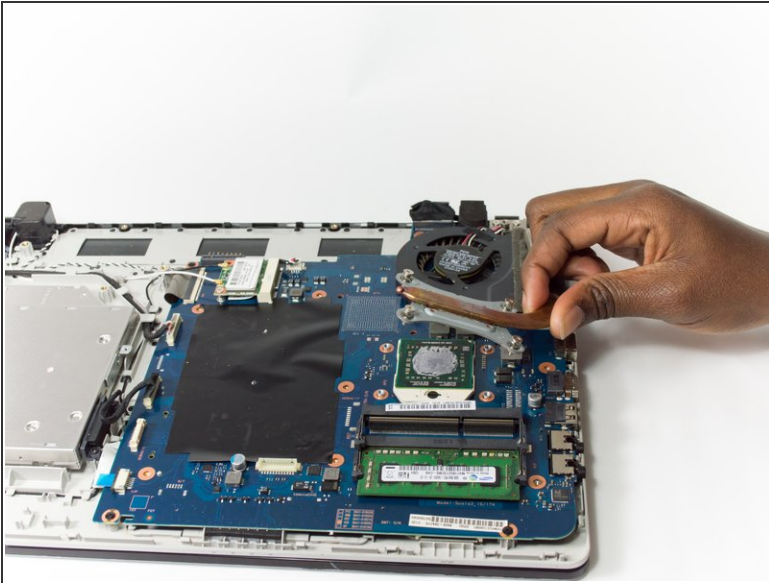
- Remove the Optical Drive by sliding it away from the laptop.

Step 14 — Fan



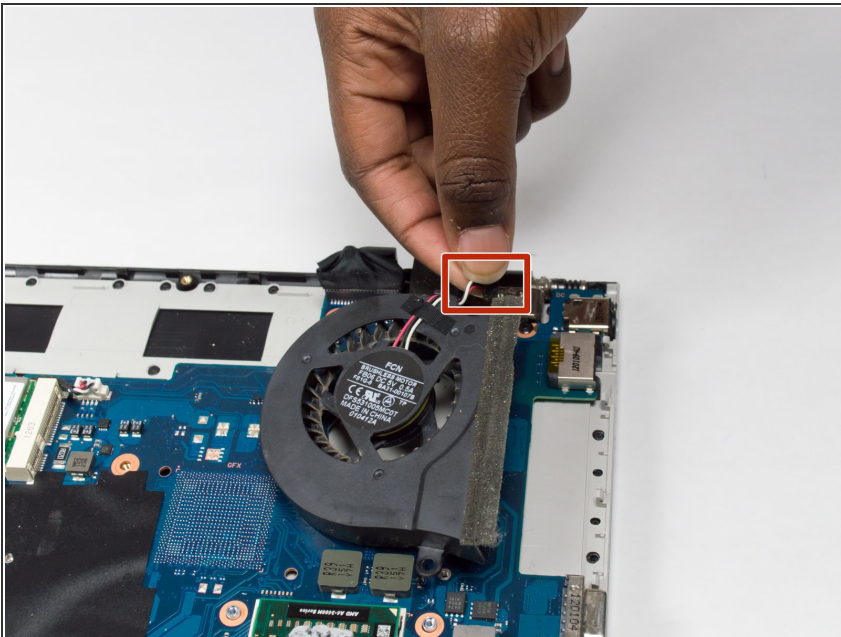
- Unscrew the four 8.9mm screws using a Phillips J0 Screwdriver by rotating the screwdriver in the counter clockwise direction.
- ⓘ The screws will only loosen to the point to where you can remove the vent, so you will not be able to fully remove the screws.

Step 15



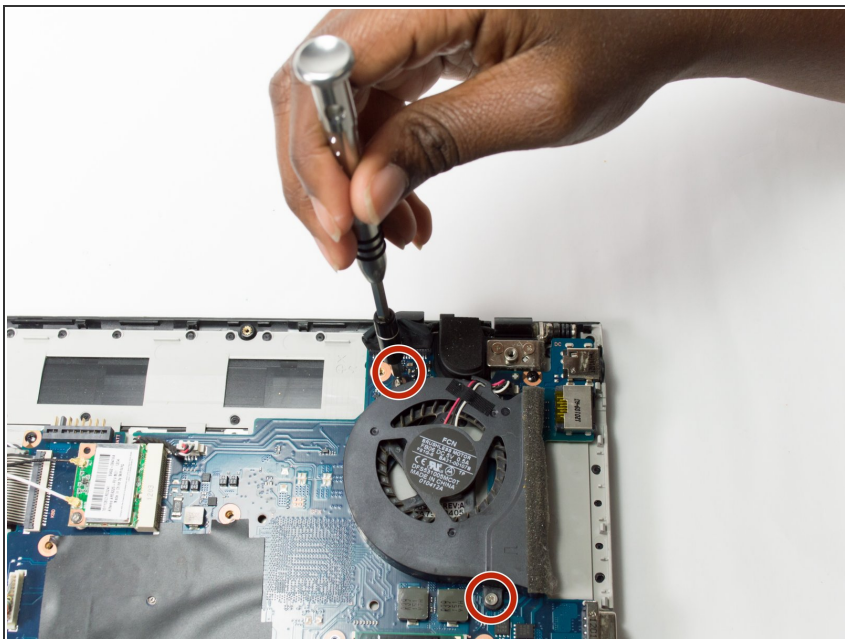
- Remove the vent by lifting it away from the laptop.

Step 16



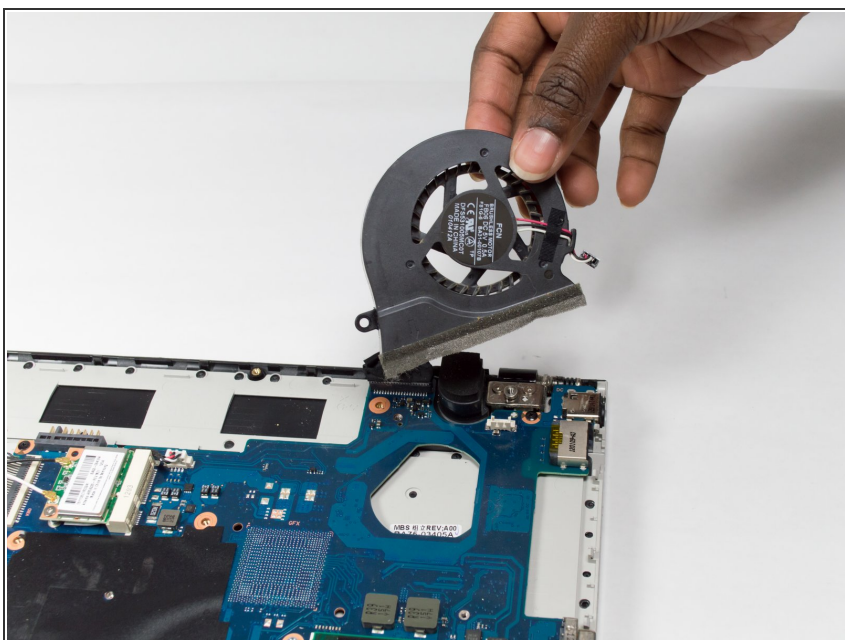
- Pull the cord that connects the Fan to the Motherboard to disconnect it.

Step 17



- Unscrew the two 4.45mm screws using a Phillips J0 Screwdriver by rotating the screwdriver in the counter clockwise direction.

Step 18



- Remove the Fan by lifting it towards you.

To reassemble your device, follow these instructions in reverse order.