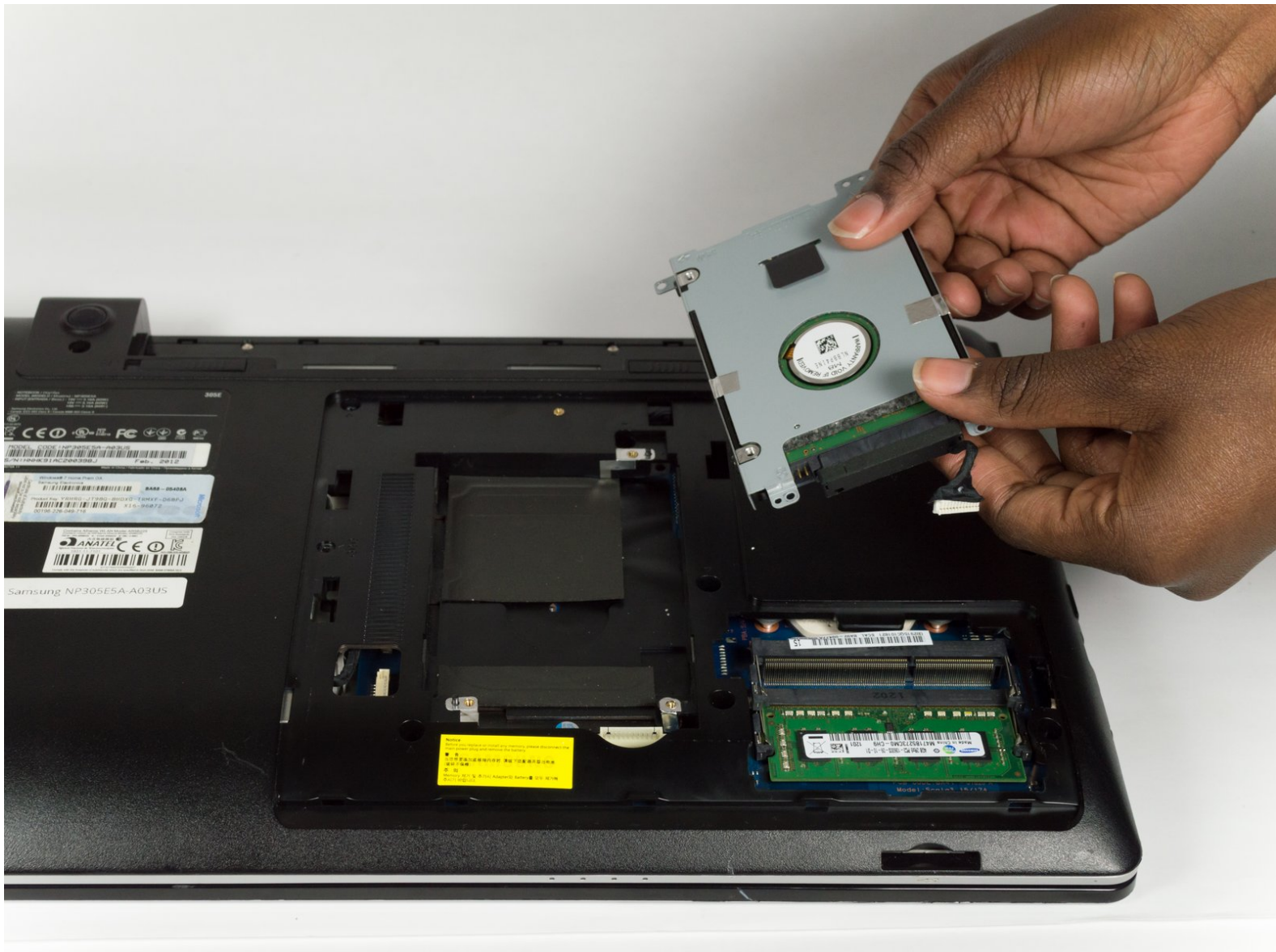




# Samsung NP305E5A-A03US Hard Drive Replacement

This guide will show the user how to get to the hard drive, remove and replace it.

Written By: Oyinda Olatundee



---

## INTRODUCTION

This guide will help you replace your hard drive. You may want to use this guide if your [computer runs slow](#)

---



### TOOLS:

- [iFixit Opening Tools](#) (1)
  - [Phillips #0 Screwdriver](#) (1)
-

## Step 1 — Battery



- ⓘ Be sure to power down your laptop before replacing your battery.
- Turn your laptop upside down so that the battery component is facing you.

## Step 2



- Place your thumbs on the lock tabs.
- Slide the tabs with your thumbs in an outward direction (in the direction of the arrows).
- ⓘ You should hear a click when you properly slide the tabs all the way.

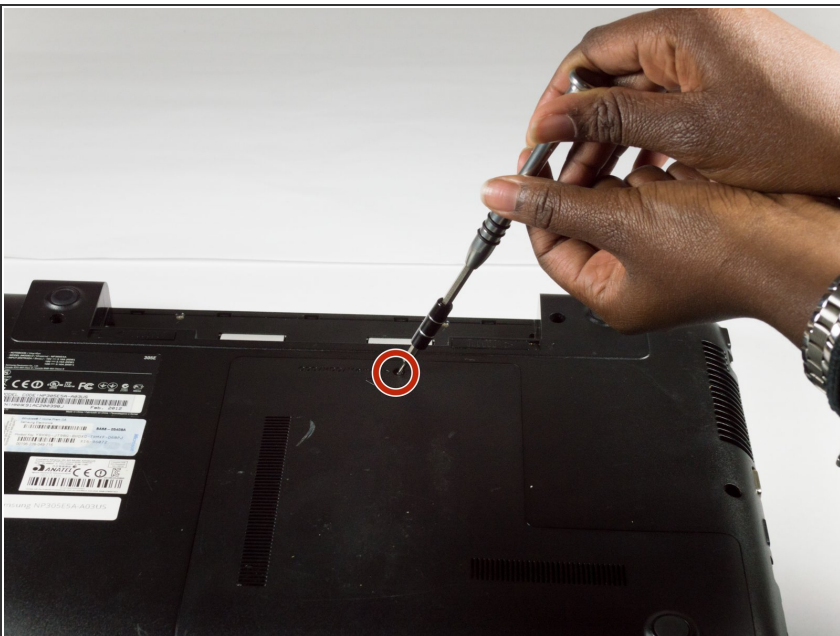
### Step 3



- Pull the battery out of the laptop towards yourself to safely remove the battery.

⚠ If you are discarding the battery, please do not throw it away in the trash. Instead find a local battery recycling facility that will not damage the environment.

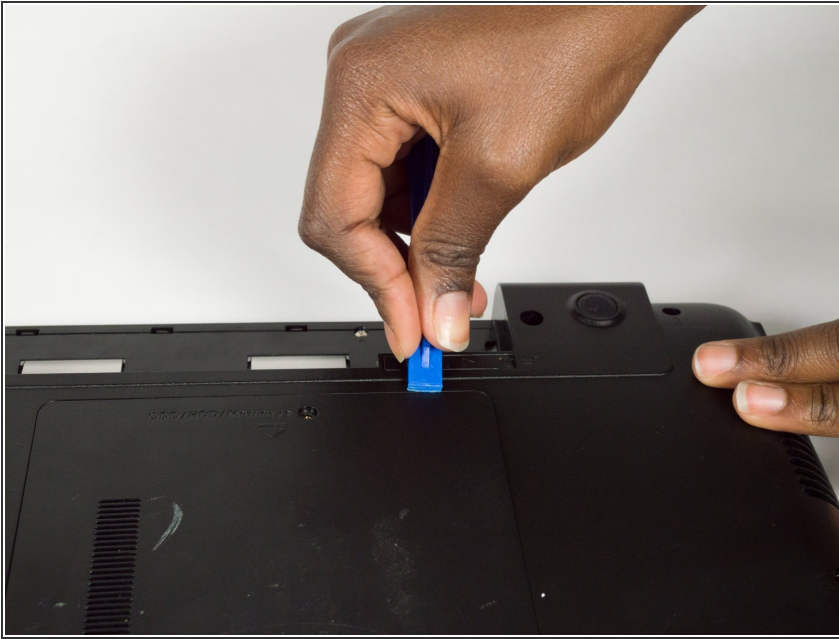
### Step 4 — Hard Drive



- Unscrew the 3.5mm screws using a Phillips J0 Screwdriver by rotating the screwdriver in the counter clockwise direction.

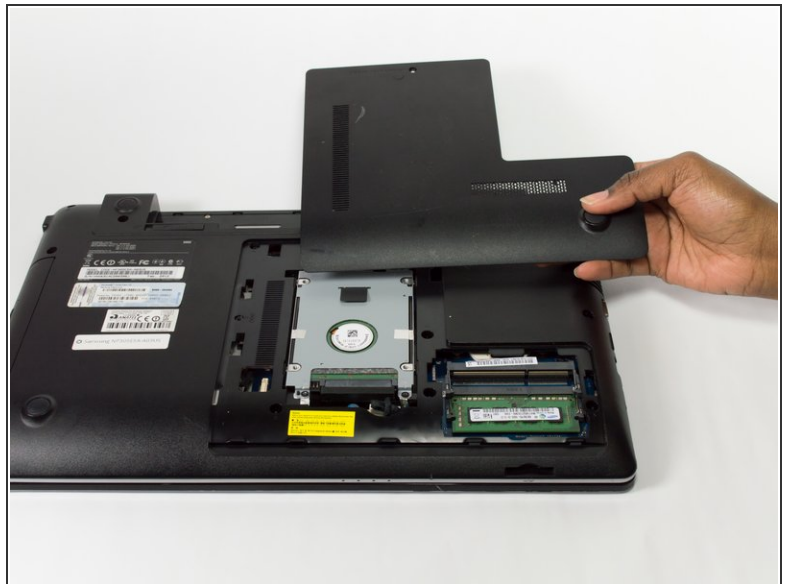
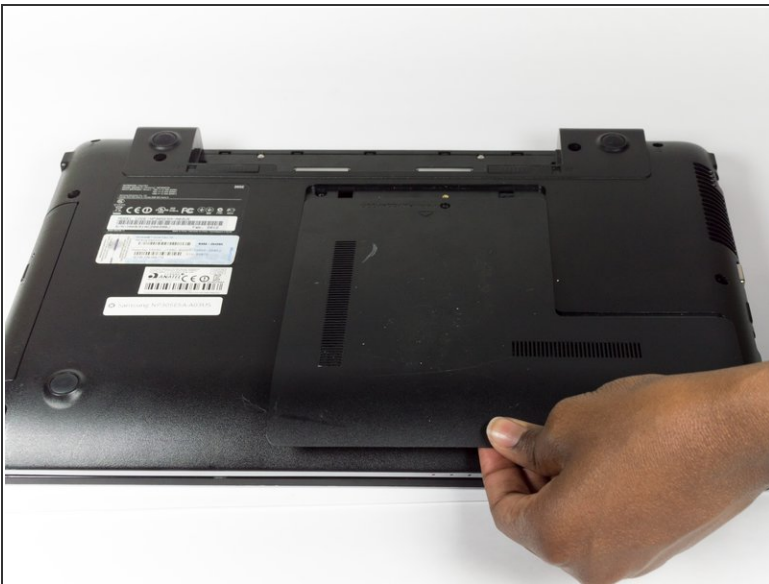


## Step 5



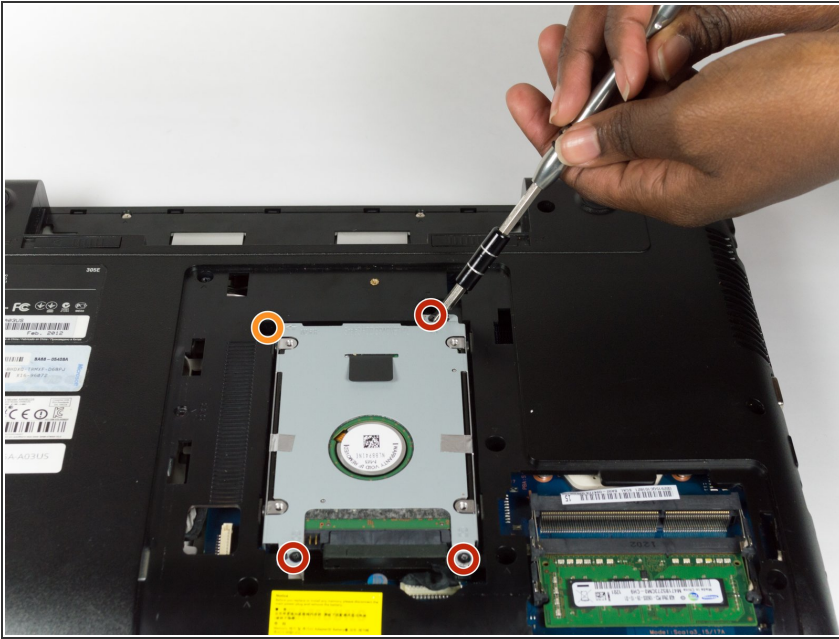
- Wedge the plastic opening tool between the L-shaped back panel to slide the panel off.
- ⓘ Note this may take force. If you have difficulties using the plastic opening tool, try to use your hands to pull the panel off.

## Step 6



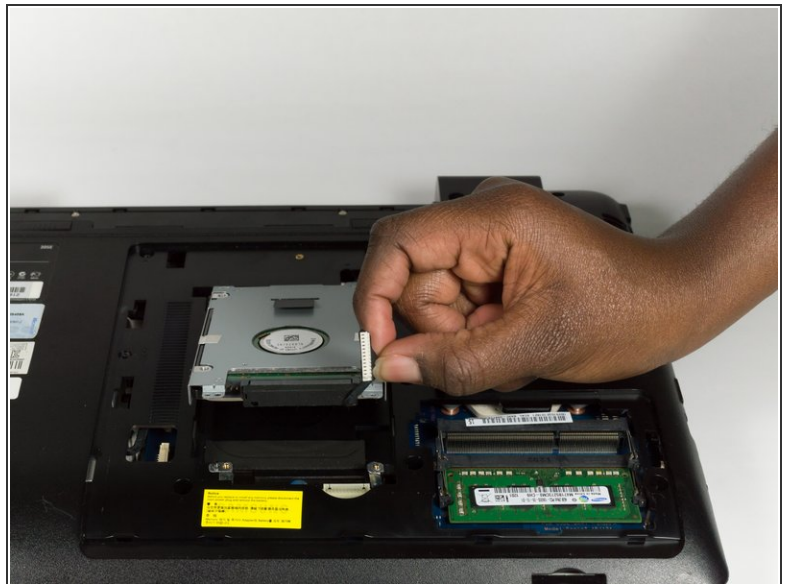
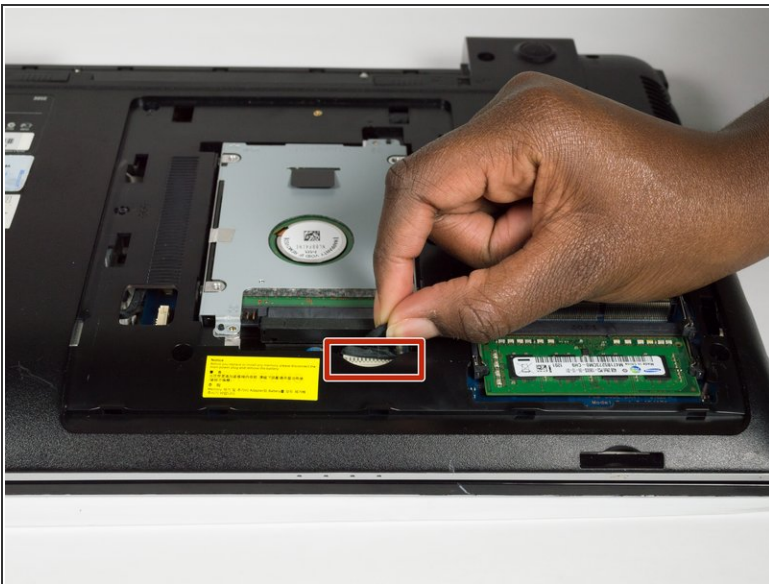
- Pull the panel towards you to remove the panel.

## Step 7



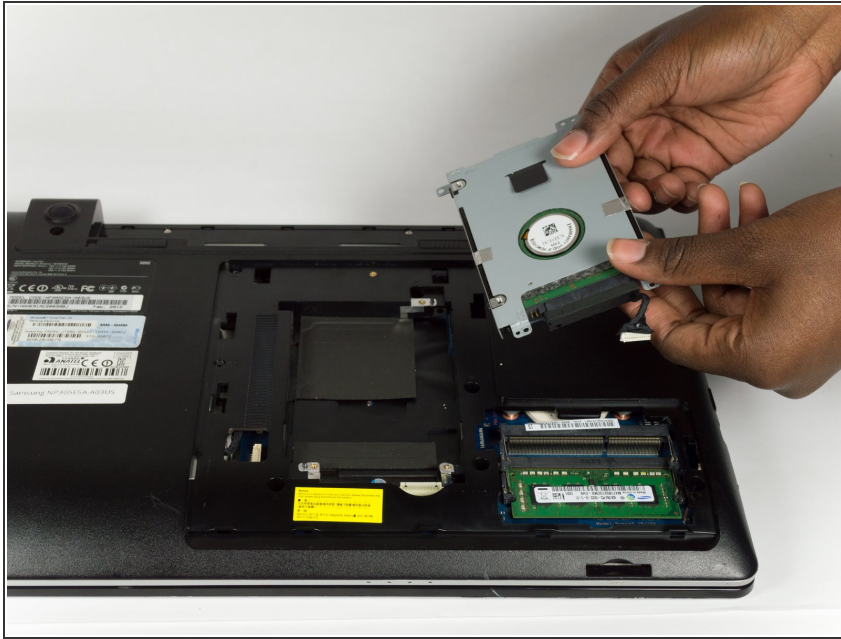
- Unscrew the three 3.5mm screws using a Phillips J0 Screwdriver by rotating the screwdriver in the counter clockwise direction.
- Unscrew the one 4.45mm screws using a Phillips J0 Screwdriver by rotating the screwdriver in the counter clockwise direction.

## Step 8



- Pull the cord that connects the Hard Drive to the Motherboard to disconnect it.

## Step 9



- Remove the Hard Drive by lifting it towards you.

To reassemble your device, follow these instructions in reverse order.