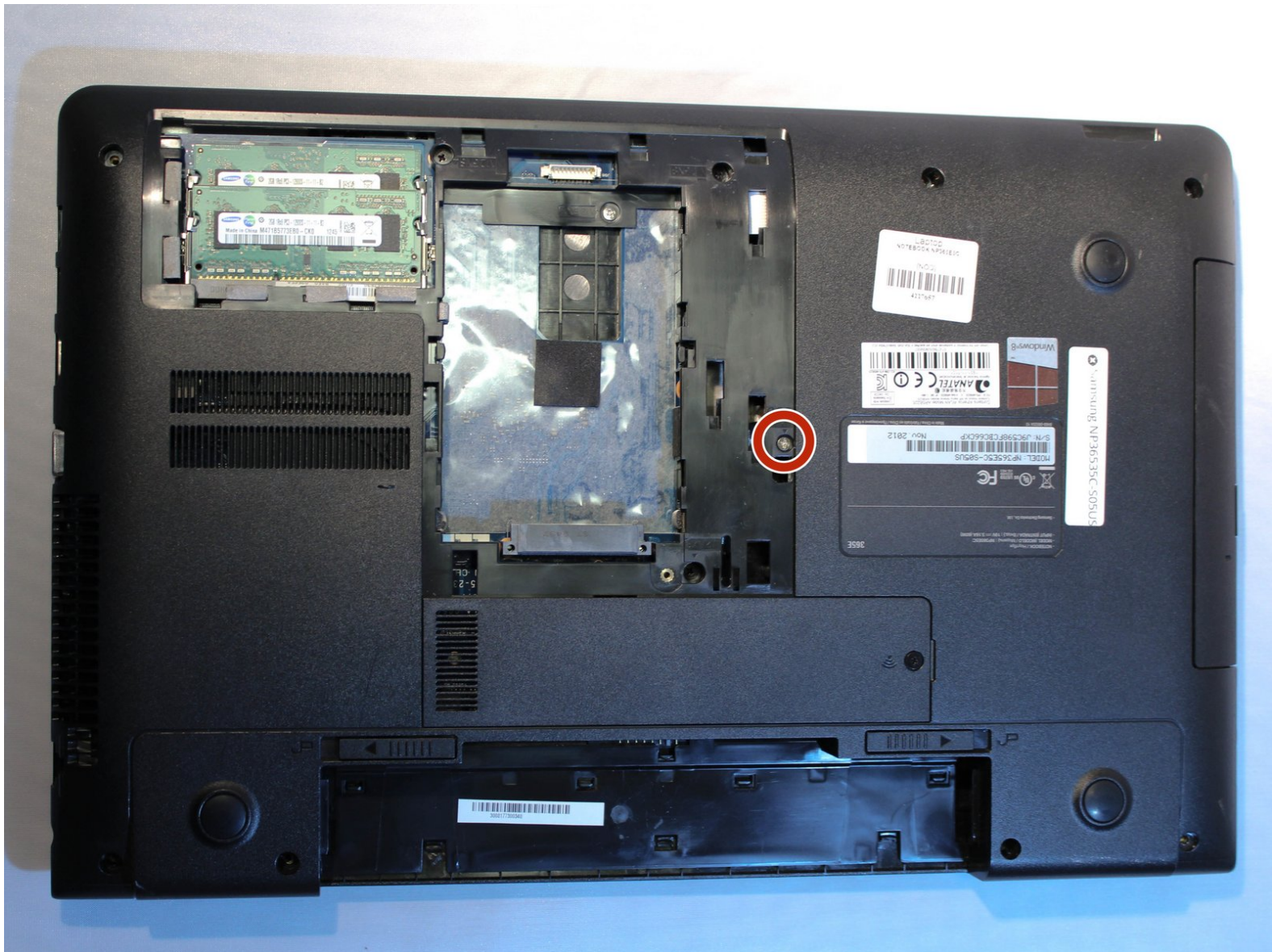




Samsung NP36535C-S05US CD Drive Replacement

We are going to teach someone how to replace the CD Drive. The first step will be to remove the back panel.

Written By: Jessie Coney



INTRODUCTION

The CD drive is a major component in this laptop. Users will be shown how to replace the CD drive in this guide.



TOOLS:

- [Phillips #0 Screwdriver](#) (1)
-

Step 1 — Battery



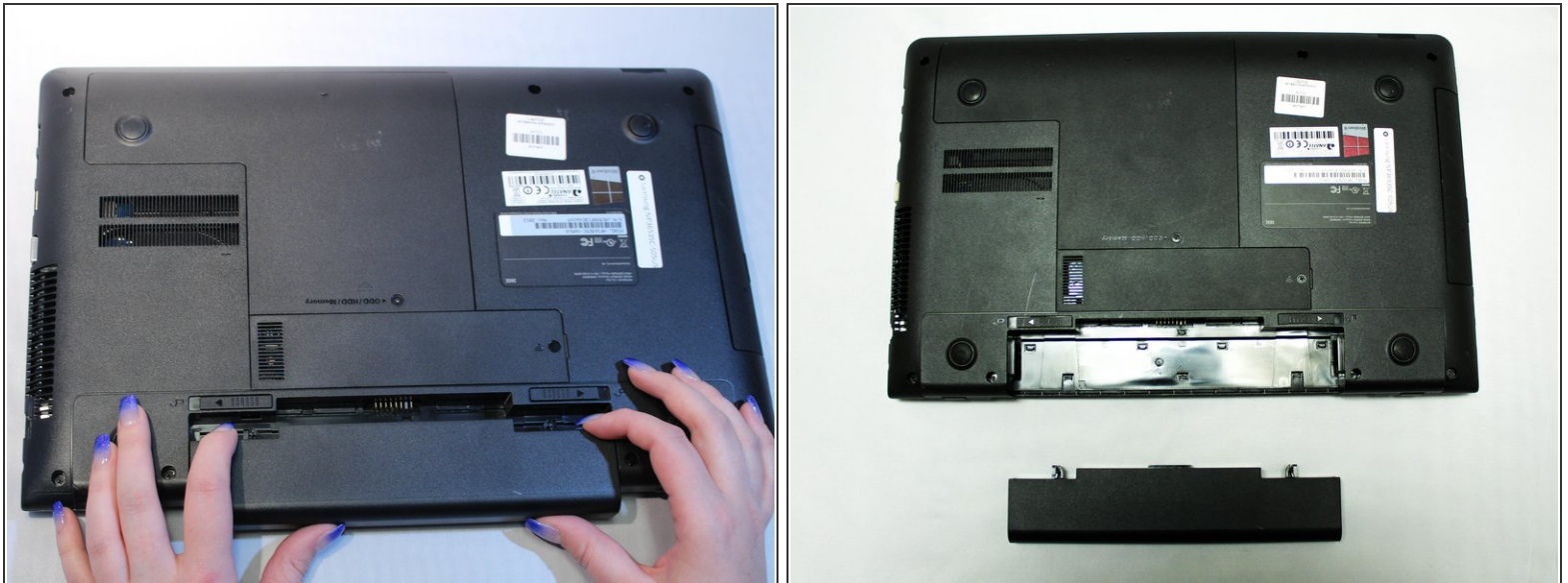
- Turn the computer off.
- Disconnect the charging cable from the laptop.
- ⚠ Failure to disconnect cable may result in electric shock.
- Flip the laptop face down on a flat surface.

Step 2



- Slide the left and right switches to the unlock position.

Step 3



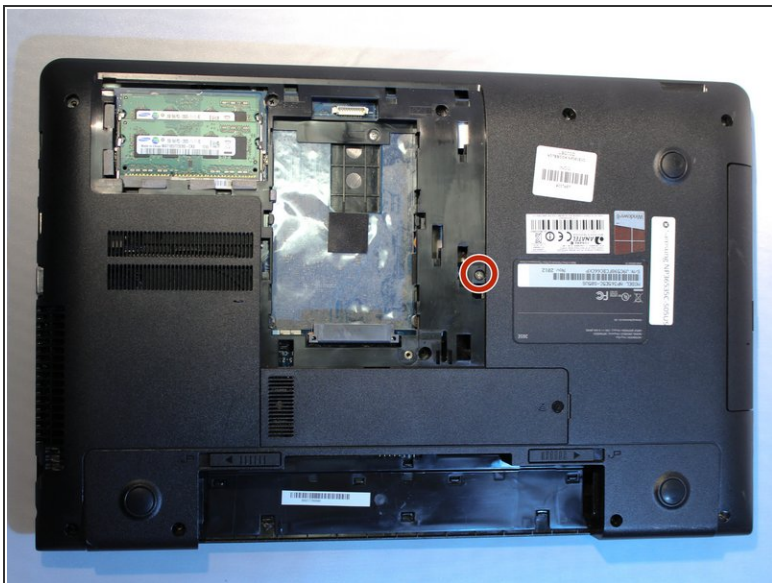
- While holding the left and right lock switches in the unlock position, pull the battery away from the computer.

Step 4 — ODD/HDD/Memory panel



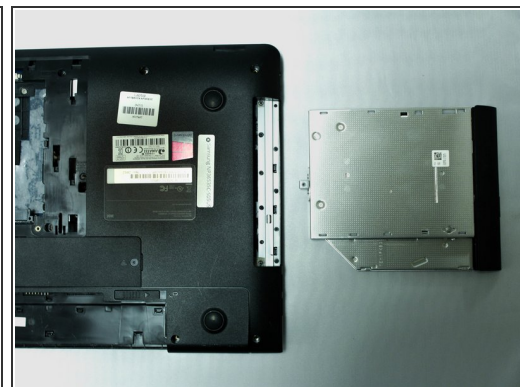
- Locate the ODD/HDD/Memory panel.
- Remove the 1.9 mm screw located on the ODD/HDD/Memory panel with the Philips #0 screwdriver.
- Slide the ODD/HDD/Memory panel away from the device to remove it.

Step 5 — CD Drive



- Locate the screw on the right side of the SDD port.
- Remove the 2.25 mm screw located on the right side of the SDD port with the Philips #0 screwdriver.

Step 6



- Locate the CD drive and slide the drive out of the computer.

To reassemble your device, follow these instructions in reverse order.