



Samsung NP36535C-S05US Display Screen Replacement

Screen replacement needs to be done when the screen is damaged. This guide will show how to replace a damaged screen on Samsung NP36535C-S05US.

Written By: Mykel Vanek



INTRODUCTION

The display screen is a main part of any laptop and without it the computer would be useless. This guide will show users how to replace the display screen.

TOOLS:

- [Phillips #0 Screwdriver](#) (1)
 - [Metal Spudger](#) (1)
 - [iFixit Opening Tools](#) (1)
-

Step 1 — Battery



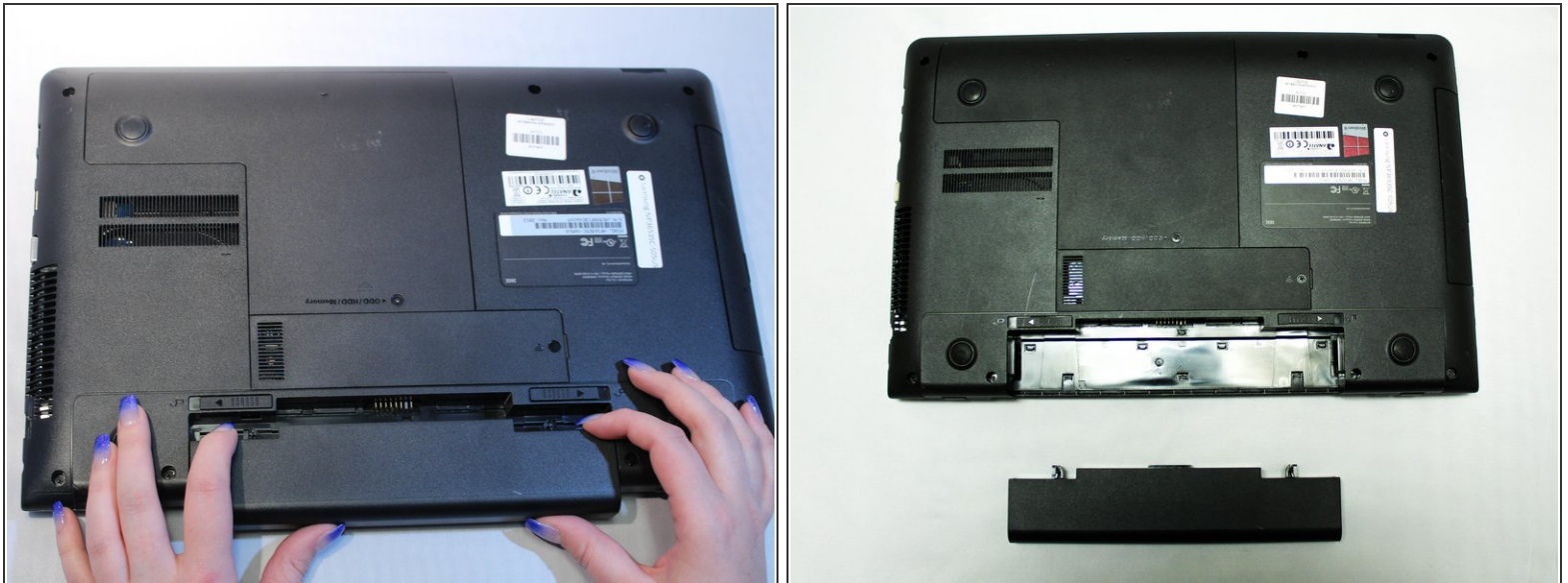
- Turn the computer off.
- Disconnect the charging cable from the laptop.
- ⚠ Failure to disconnect cable may result in electric shock.
- Flip the laptop face down on a flat surface.

Step 2



- Slide the left and right switches to the unlock position.

Step 3



- While holding the left and right lock switches in the unlock position, pull the battery away from the computer.

Step 4 — Display Screen



- Open the laptop.
- Locate the two (2) screw covers.
- Remove the screw covers with the metal spudger.

Step 5



- Remove the two (2) 2.27 mm screws with the Philips #0 screwdriver.

Step 6



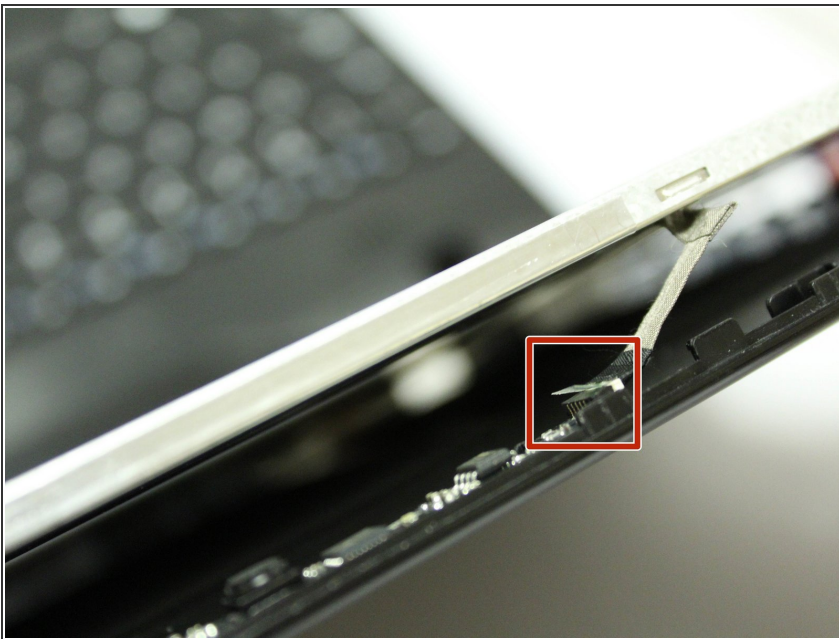
- Carefully pry the front display cover off with a plastic prying tool.

Step 7



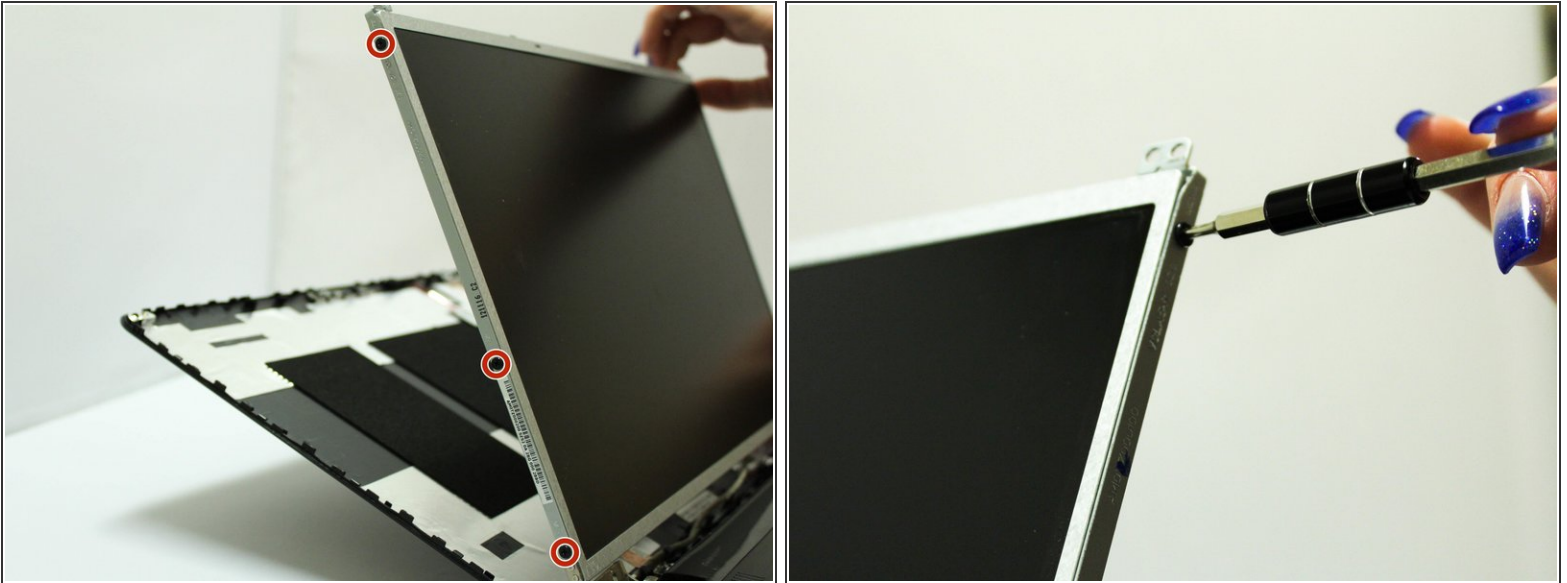
- Locate the six (6) 2.39 mm screws on the display bracket.
- Remove the four (4) screws on the left and right sides of the display bracket located near the base of the display with the Philips #0 screwdriver.
- Remove the two (2) screws on the left and right sides of the display bracket located near the top of the display with the Phillips #0 screwdriver.

Step 8



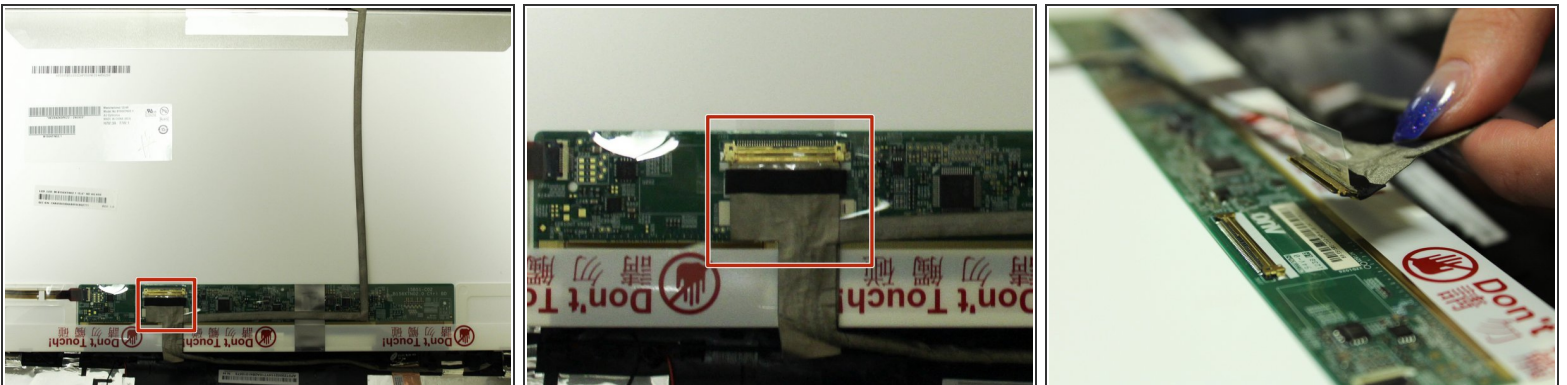
- Carefully remove the connector between the display and the display casing by pulling the connector away from its outlet.

Step 9



- Locate the six (6) 1.85 mm screws on the left and right brackets holding the display in place.
- Remove the screws on each side of the bracket, alternating sides when removing each screw with the Philips #0 screwdriver.

Step 10



- Locate the display connector on the back of the display.
- Carefully remove the tape on the display connector.
- Remove the display connector by unplugging it from its outlet.

Step 11



- Locate and remove the tape from the back of the display in the two (2) sections marked on the supporting image.

Step 12



- You have successfully removed the display screen.

To reassemble your device, follow these instructions in reverse order.