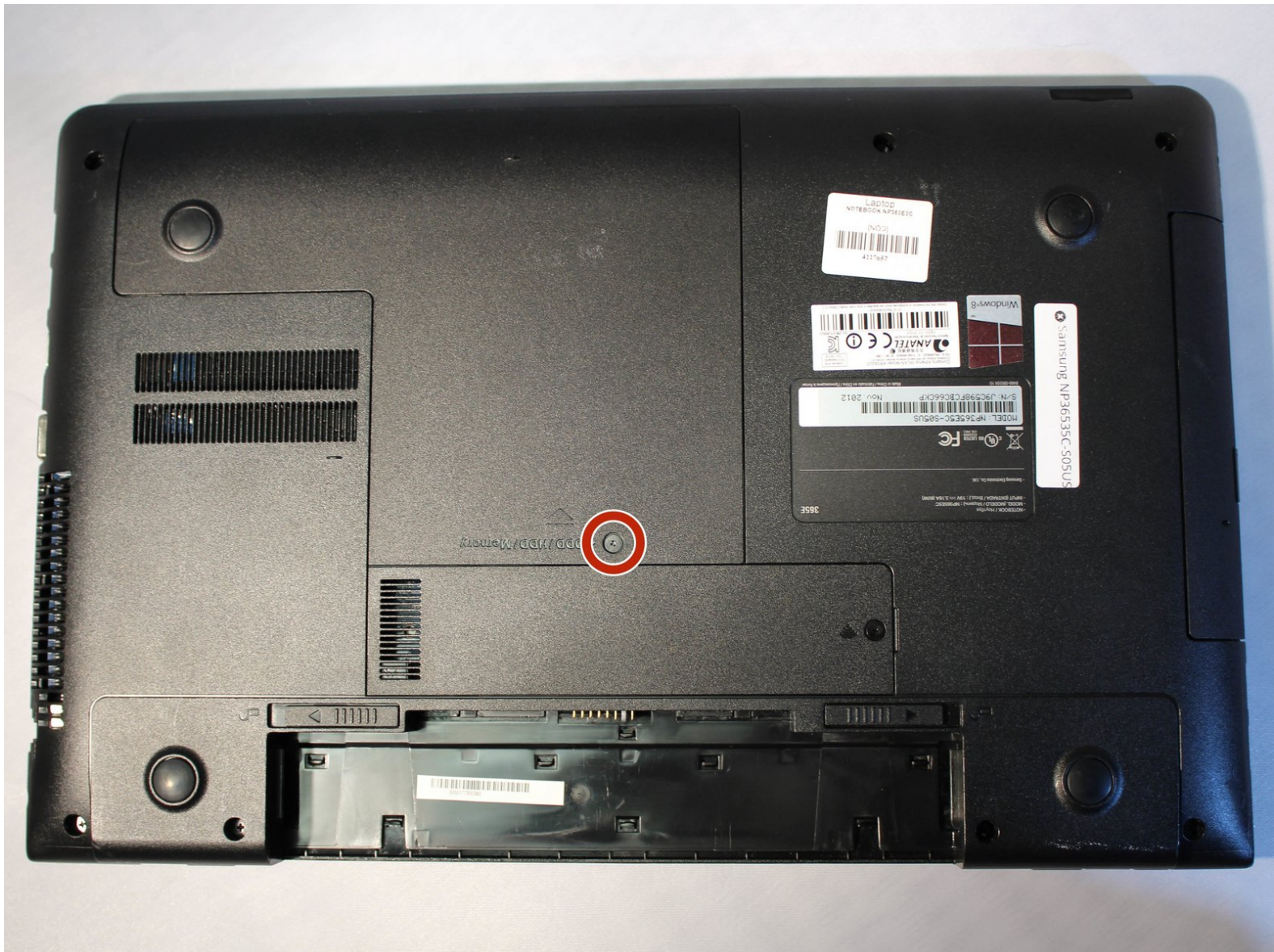




Samsung NP36535C-S05US ODD/HDD/Memory panel Replacement

Removing the ODD/HDD/Memory panel on the Samsung NP3653C-S05US laptop.

Written By: Mykel Vanek



INTRODUCTION

This guide will show how to remove the OD/HDD/Memory panel on the bottom of the laptop. Removing this panel gives access to multiple components in the computer.



TOOLS:

- [Phillips #0 Screwdriver](#) (1)
-

Step 1 — Battery



- Turn the computer off.
- Disconnect the charging cable from the laptop.
- ⚠ Failure to disconnect cable may result in electric shock.
- Flip the laptop face down on a flat surface.

Step 2



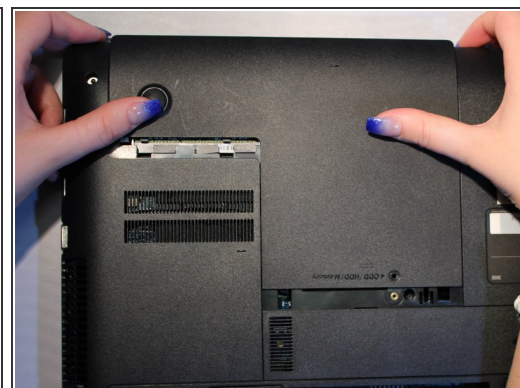
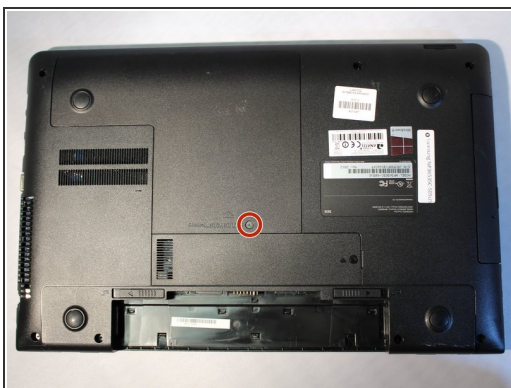
- Slide the left and right switches to the unlock position.

Step 3



- While holding the left and right lock switches in the unlock position, pull the battery away from the computer.

Step 4 — ODD/HDD/Memory panel



- Locate the ODD/HDD/Memory panel.
- Remove the 1.9 mm screw located on the ODD/HDD/Memory panel with the Philips #0 screwdriver.
- Slide the ODD/HDD/Memory panel away from the device to remove it.

To reassemble your device, follow these instructions in reverse order.