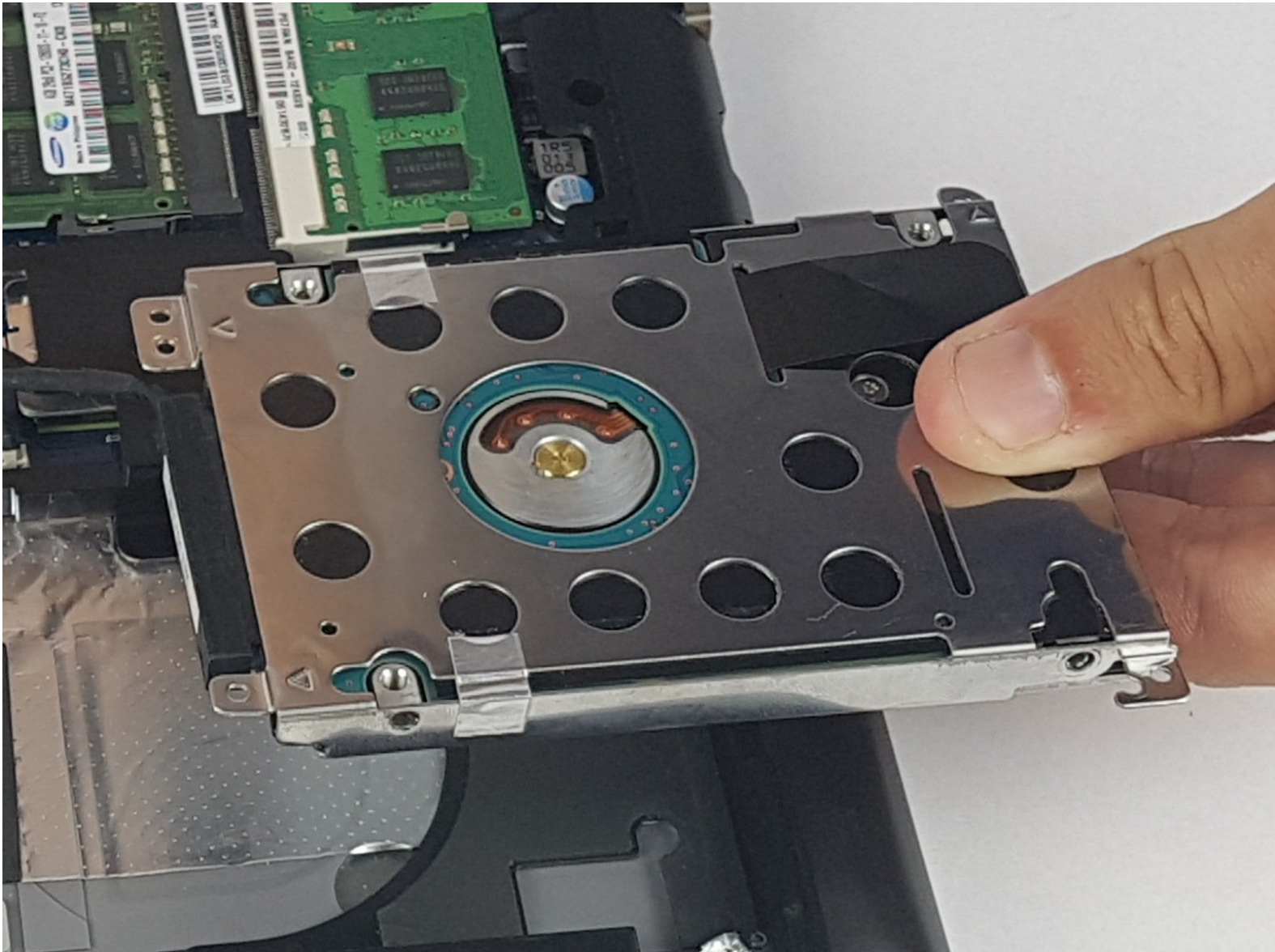




Samsung NP510R5E-A01UB Hard Drive Replacement

This guide will show you how to replace the hard drive for a Samsung NP510R5E-A01UB.

Written By: Brian Briggs



INTRODUCTION

The hard drive stores crucial memory for a device. This guide will show you how to replace it properly.



TOOLS:

- [Phillips #0 Screwdriver](#) (1)
 - [iFixit Opening Tools](#) (1)
-

Step 1 — Hard Drive



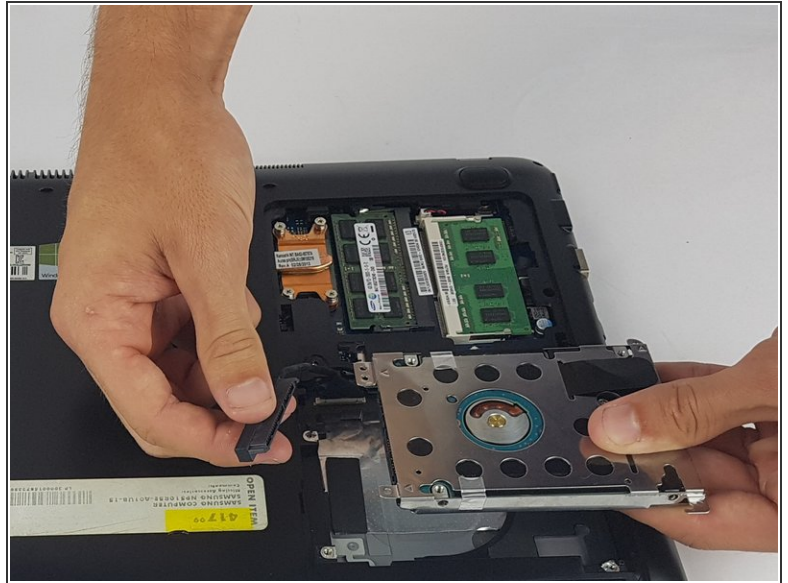
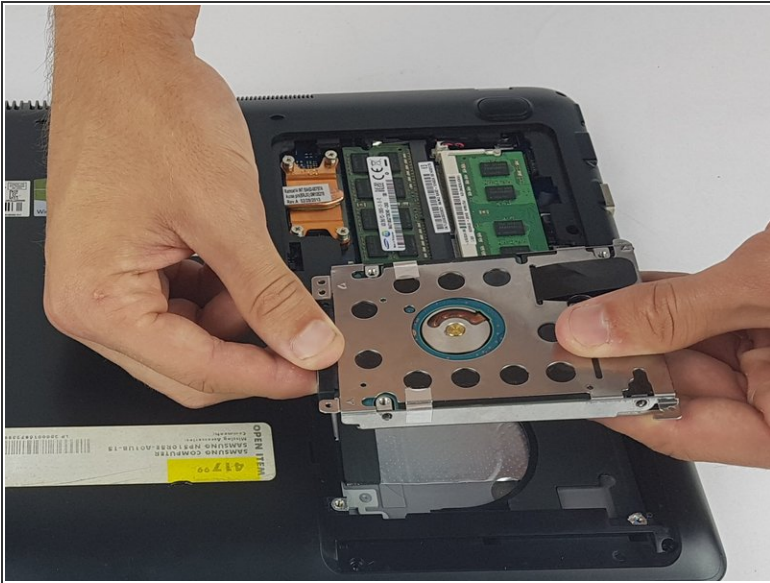
- ⚠ Make sure the device is powered off before beginning.
- Using the Phillips #0 screwdriver, remove the 6.5mm long screw in the area circled.

Step 2



- With the cover removed, unscrew all four of the 4.75mm long screws using the Phillips #0 screwdriver.

Step 3



- Unplug the connector from the hard drive by pulling straight out.

To reassemble your device, follow these instructions in reverse order.