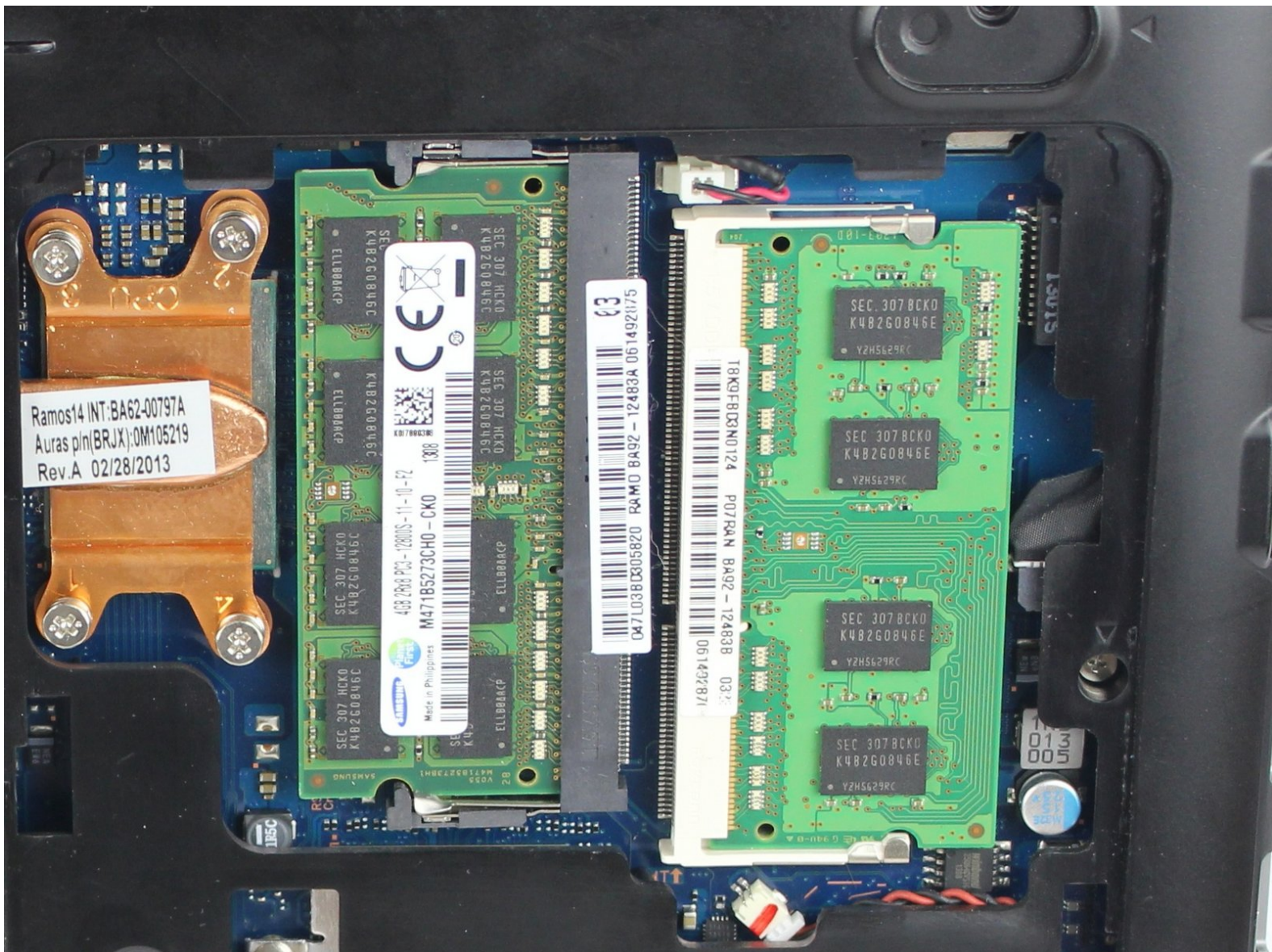




Samsung NP510R5E-A01UB RAM Replacement

This guide will show you how to replace the RAM for a Samsung NP510R5E-A01UB.

Written By: Brian Briggs



INTRODUCTION

Random Access Memory (RAM) is a critical part of any device, it assists the device to run smoothly. This guide will show you how to replace it properly.



TOOLS:

- [Phillips #0 Screwdriver](#) (1)
-

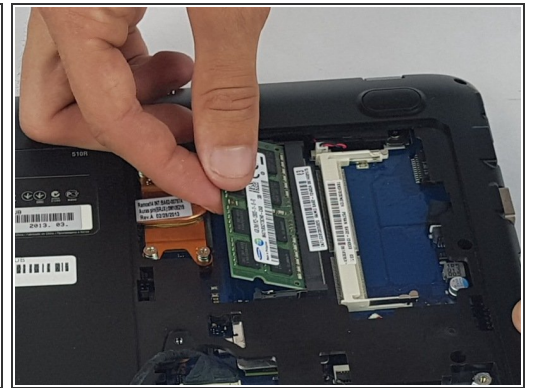
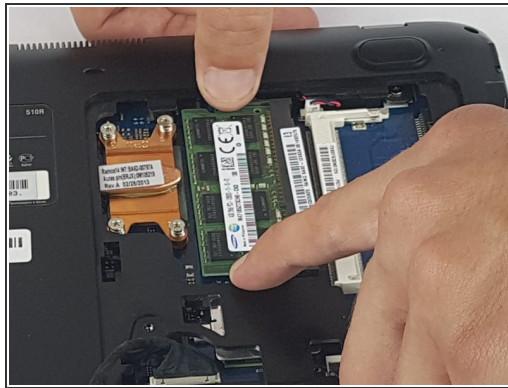
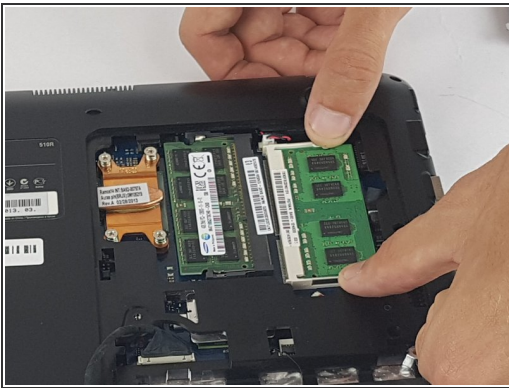
Step 1 — RAM



⚠ Make sure the device is powered off before beginning.

- Using the Phillips #0 screwdriver, remove the 6.5mm long screw in the area circled.

Step 2



- Press down on the tabs on both sides of the RAM to release, then pull away from the mount to remove.

To reassemble your device, follow these instructions in reverse order.