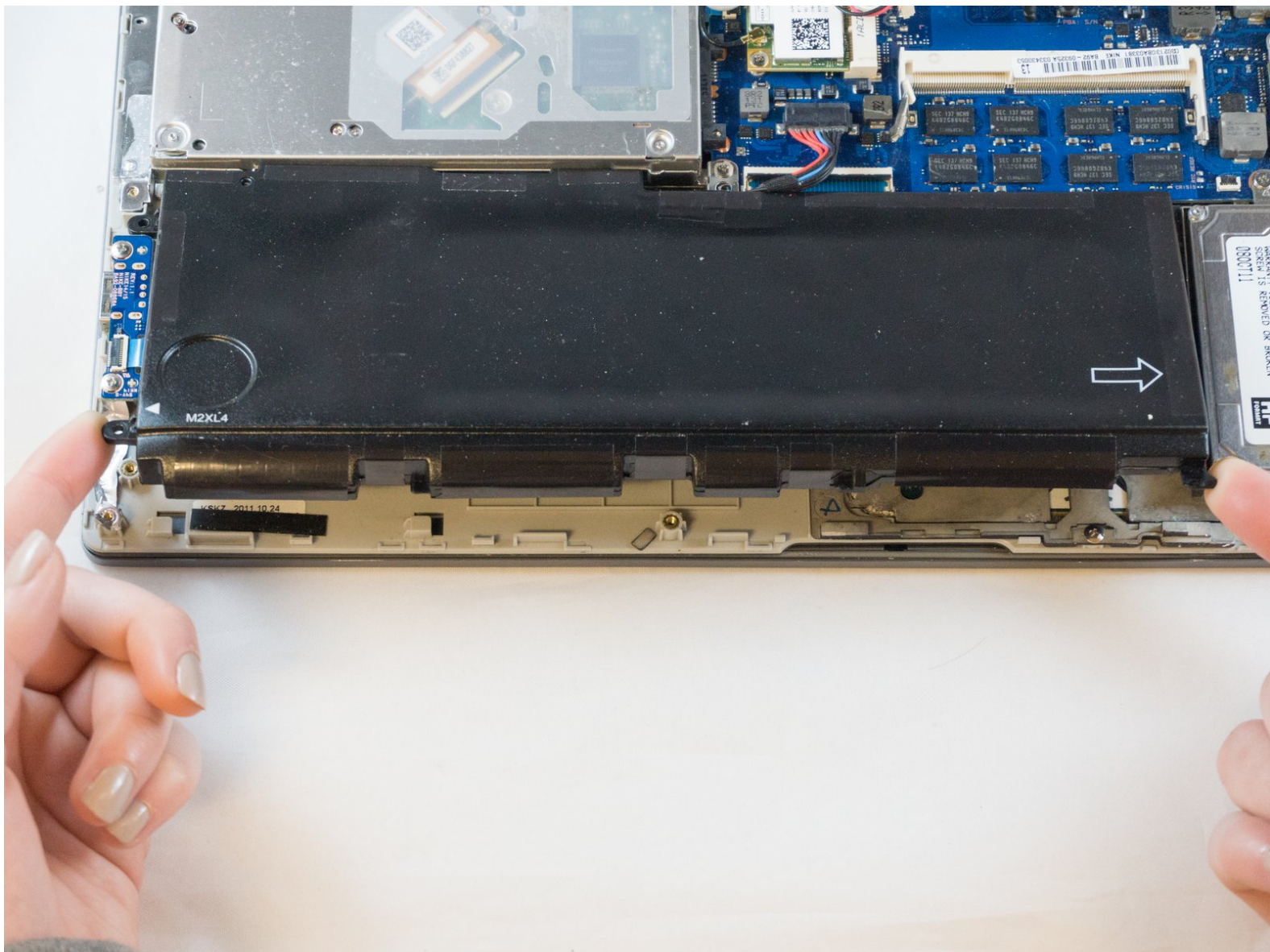




# Samsung NP700Z5AH Battery Replacement

Use this guide to replace the battery in the Samsung NP700Z5AH.

Written By: Erik



---

## INTRODUCTION

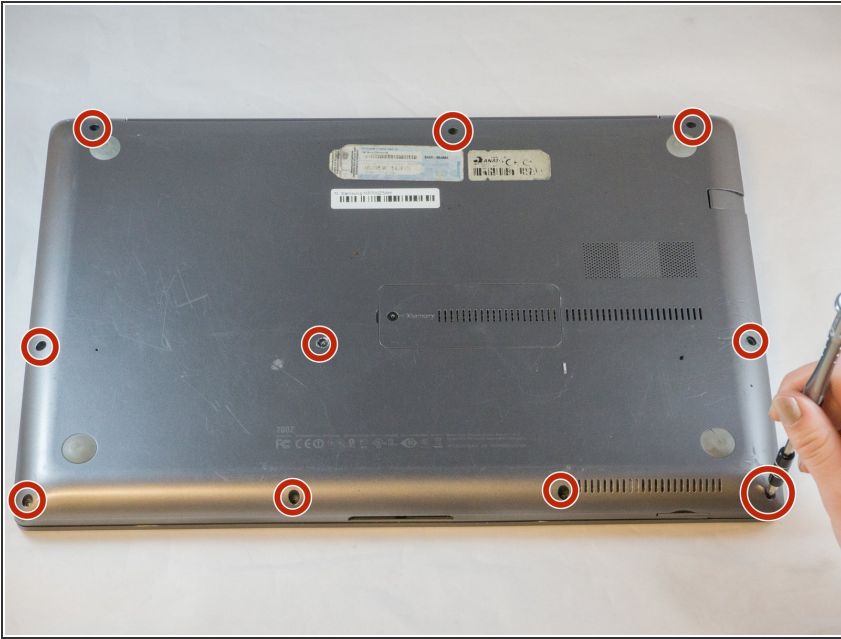
This guide details the process of replacing a dead or dying battery within the Samsung NP700Z5AH. This quick and simple process requires only two simple tools to complete.

---

### TOOLS:

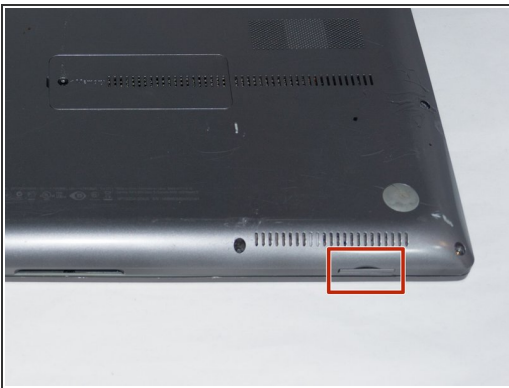
- [Phillips #00 Screwdriver](#) (1)
  - [Tweezers](#) (1)
-

## Step 1 — Battery



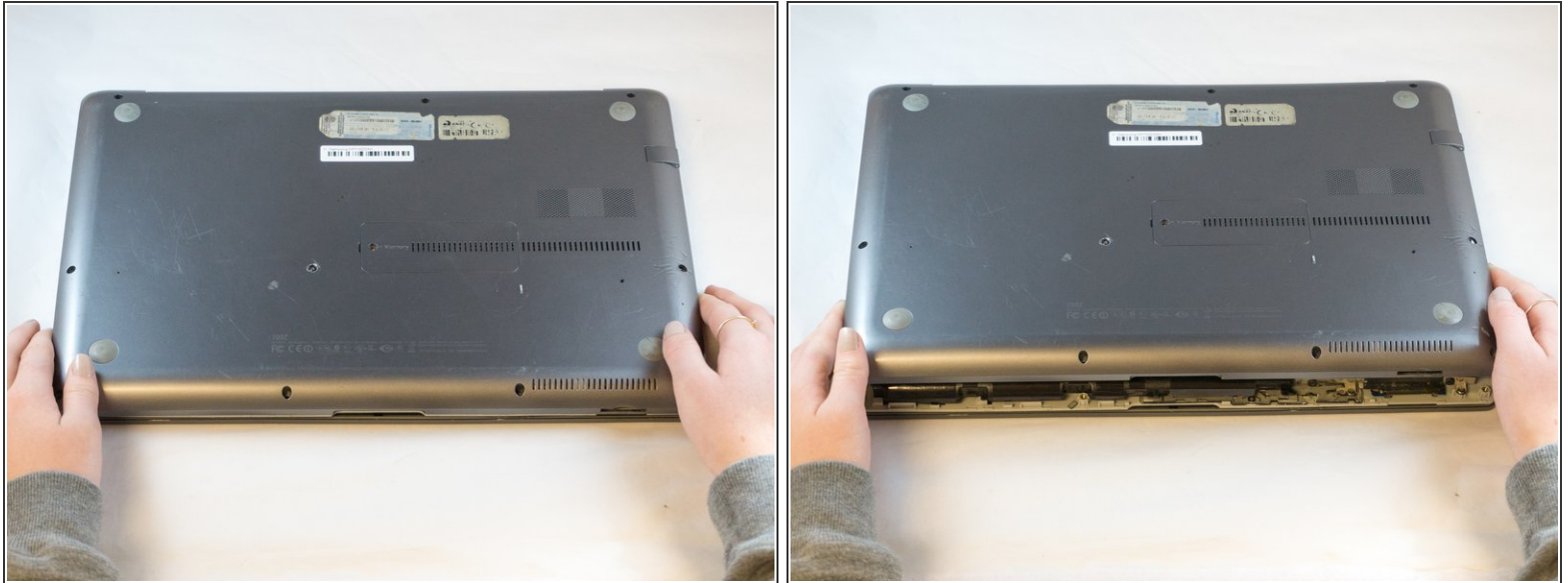
- Remove the ten 6.6mm Philips#00 screws securing the lower case to the upper case.

## Step 2



- Using your fingers, pinch the edge of the SD card and pull to remove it.

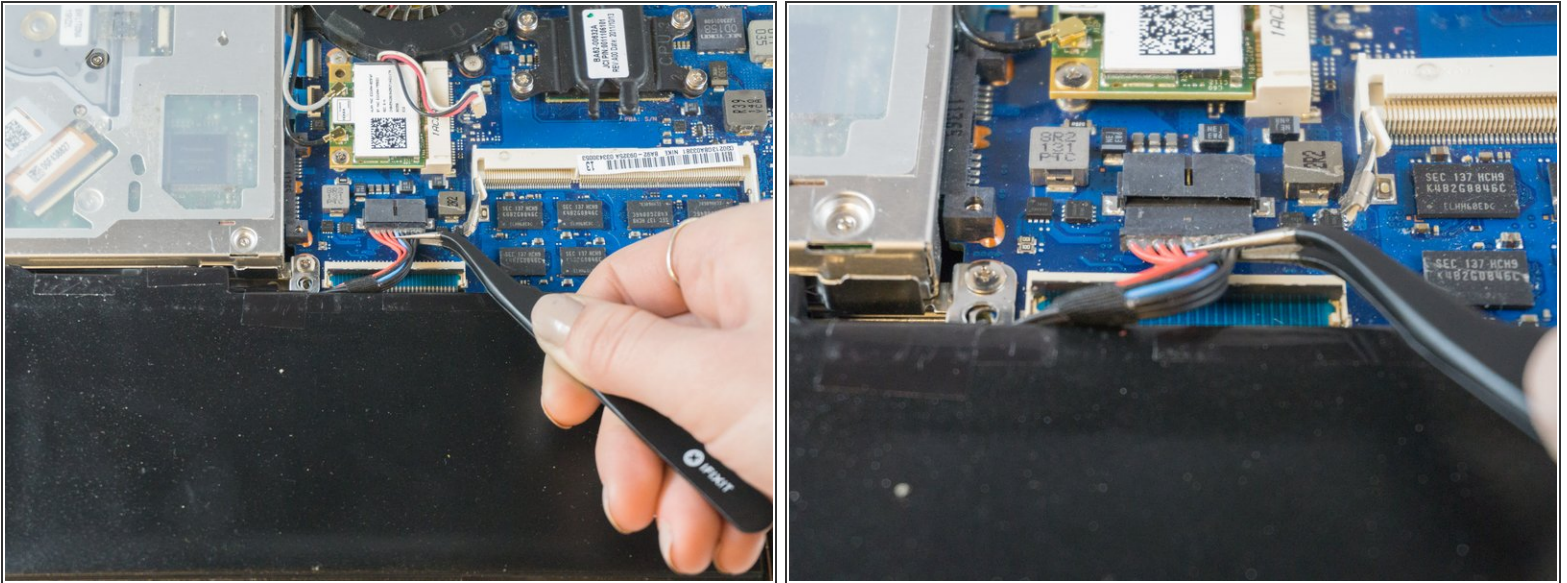
## Step 3



- Wedge your fingers in between the upper case and the lower case
- Gently pull the lower case away from the upper case to remove it



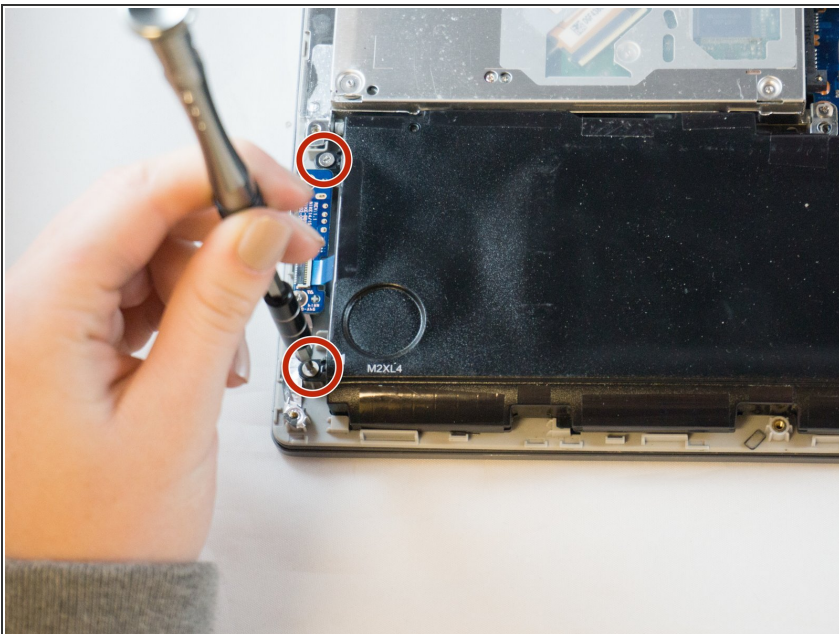
## Step 4



- Using tweezers or your fingertips, carefully pull on the battery connector to disconnect it from the motherboard.

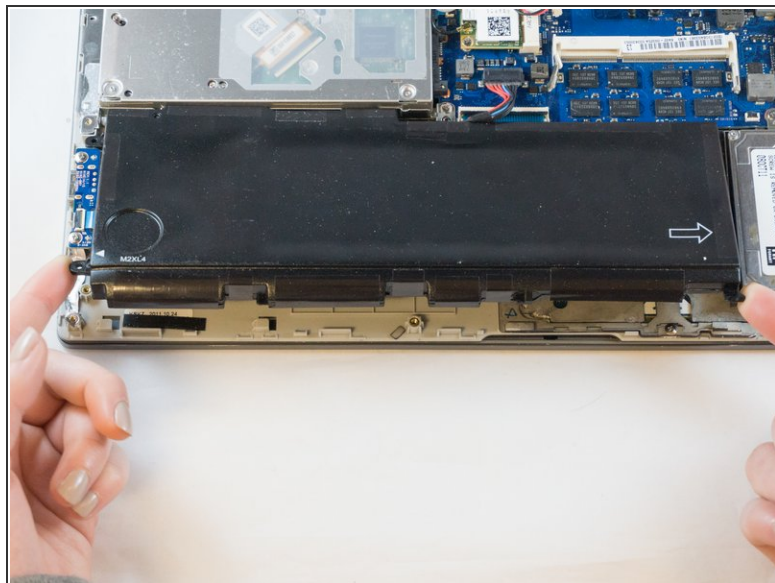
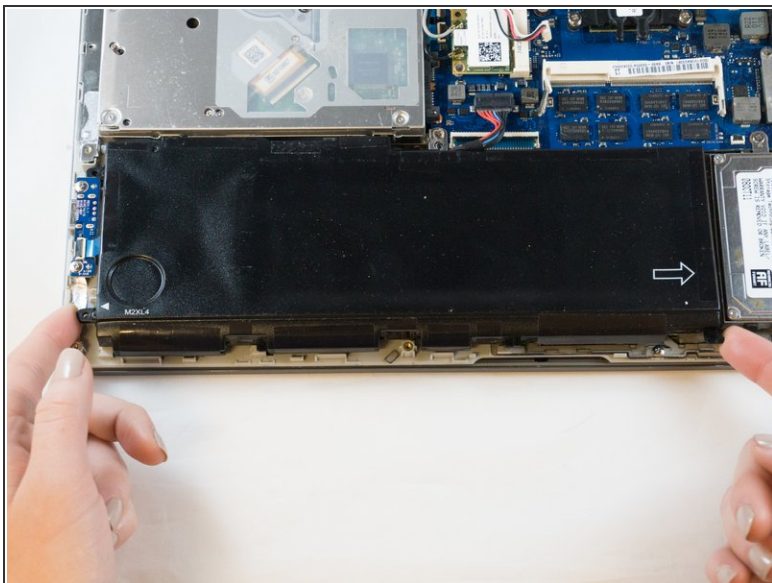
⚠ Be sure to pull straight backwards, or you risk damaging the wires.

## Step 5




- Remove the two 4.4mm Phillips#00 screws from the battery case.

## Step 6



- Place your fingers on the corner sections of the battery.
- Lift to remove the battery.

 If you choose to use tools to remove the battery be careful not to damage it. A damaged lithium-ion battery may leak dangerous chemicals and/or catch fire. Use only plastic pry tools.

To reassemble your device, follow these instructions in reverse order.