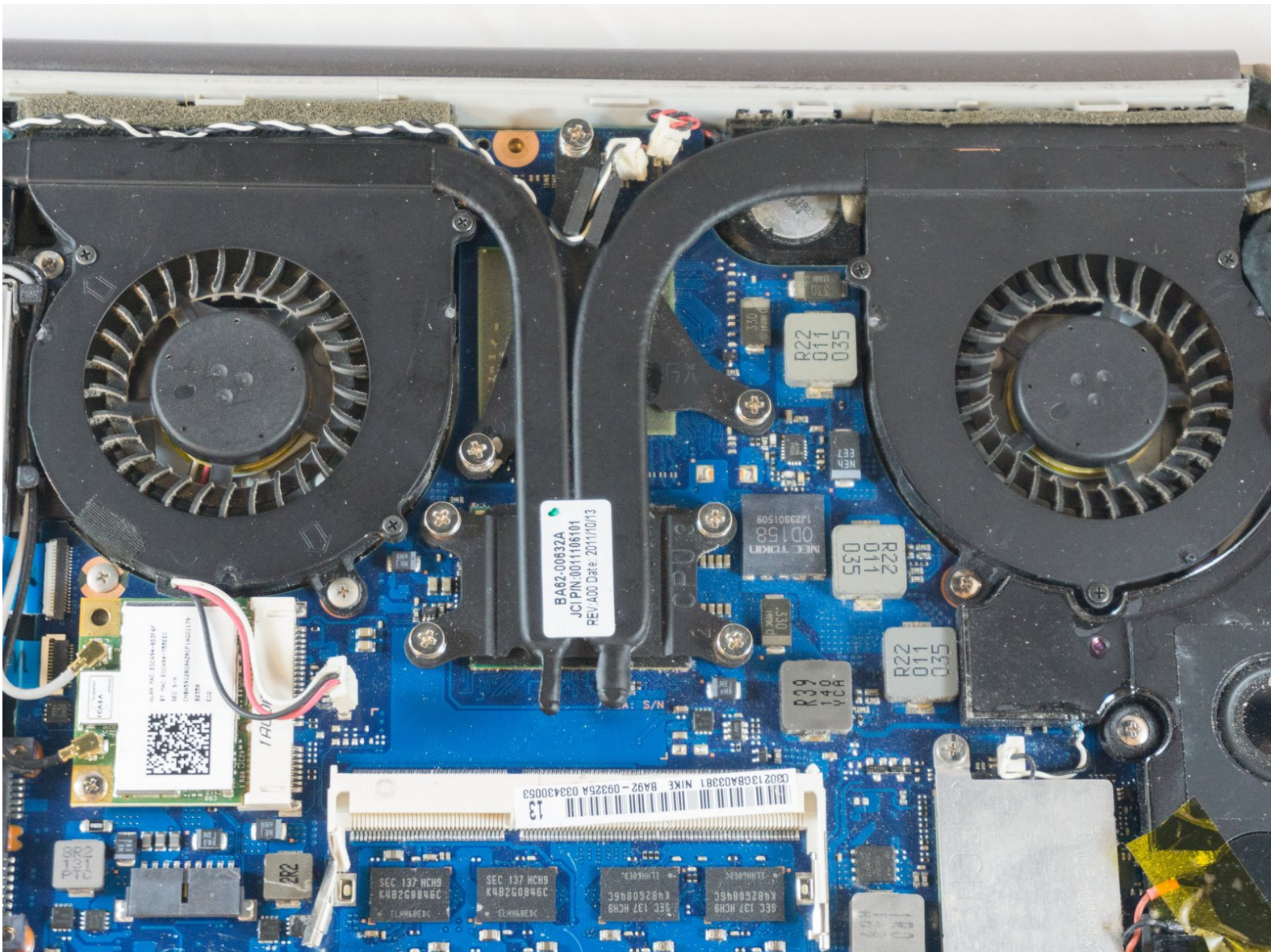




Samsung NP700Z5AH Fan Replacement

Use this guide to replace the fan in your Samsung NP700Z5AH.

Written By: Erik



INTRODUCTION

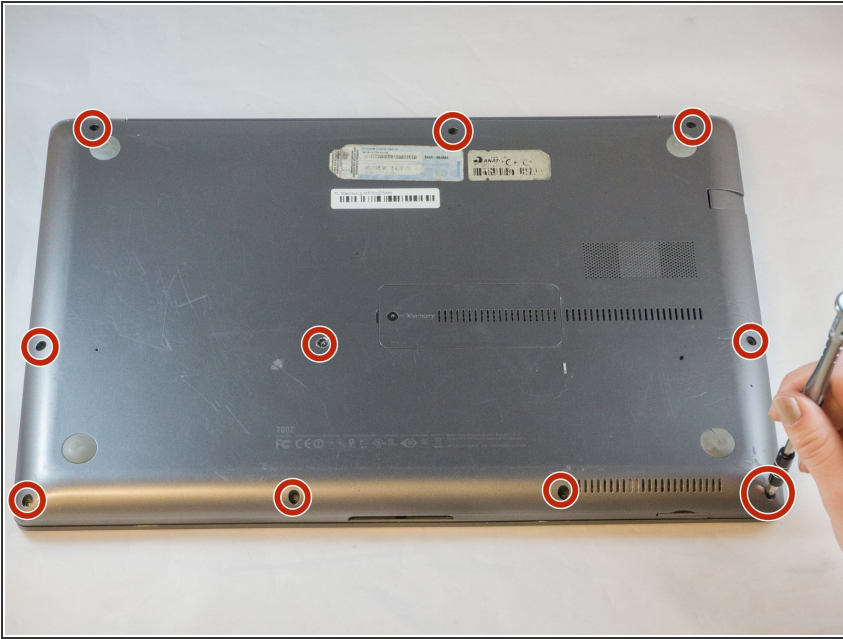
This guide provides details on how to remove a dirty or broken fan from the Samsung device.



TOOLS:

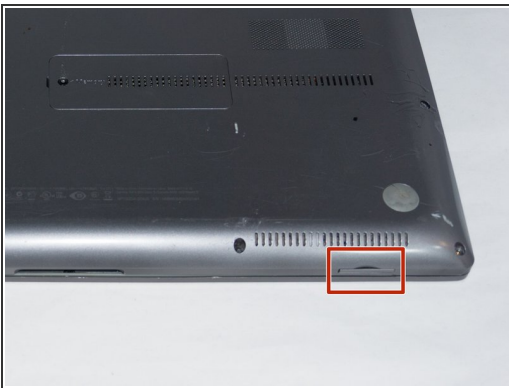
- [Phillips #00 Screwdriver](#) (1)
 - [Tweezers](#) (1)
 - [Spudger](#) (1)
-

Step 1 — Battery



- Remove the ten 6.6mm Philips#00 screws securing the lower case to the upper case.

Step 2



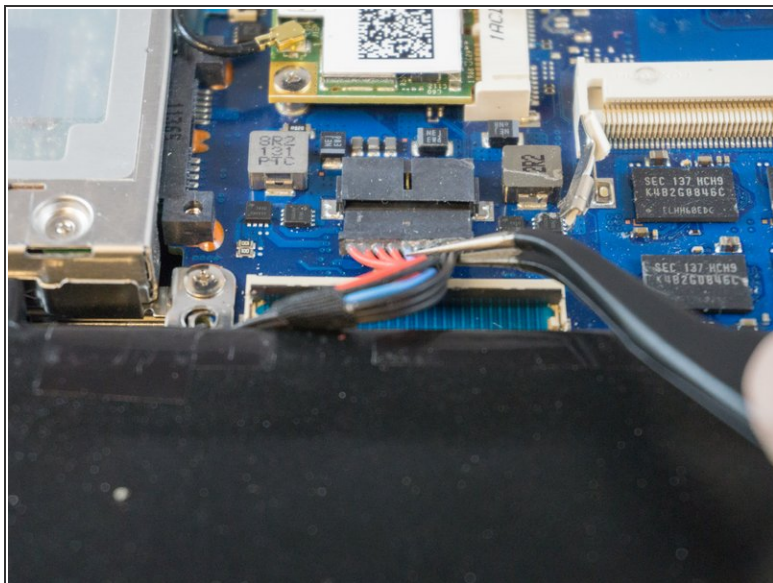
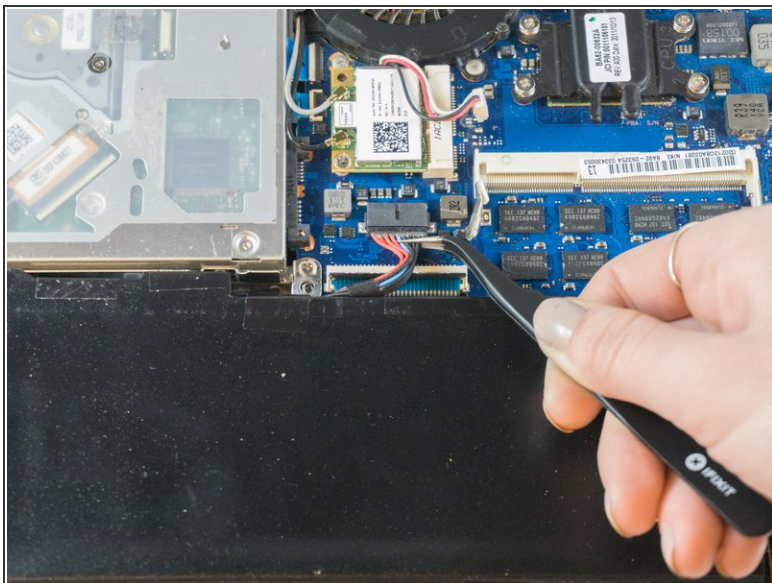
- Using your fingers, pinch the edge of the SD card and pull to remove it.

Step 3



- Wedge your fingers in between the upper case and the lower case
- Gently pull the lower case away from the upper case to remove it

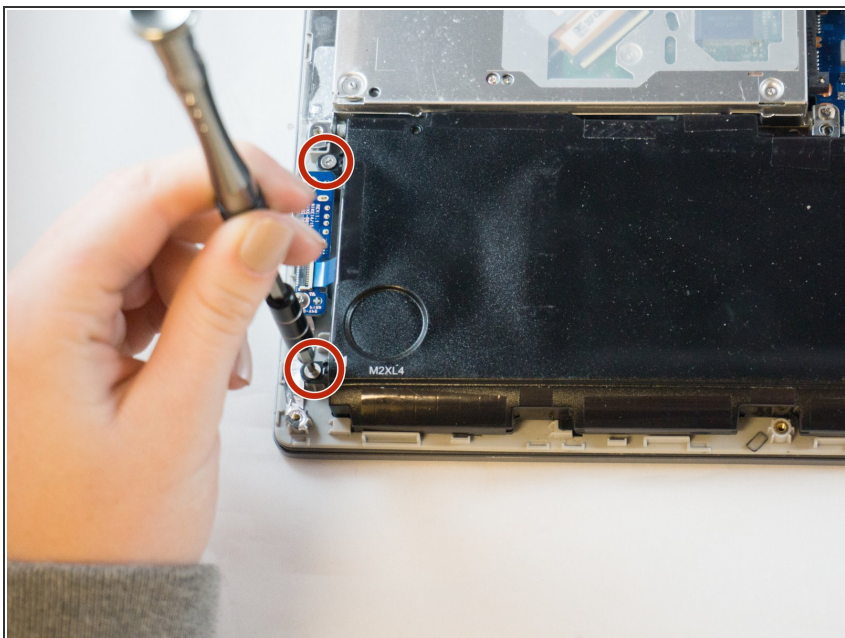
Step 4



- Using tweezers or your fingertips, carefully pull on the battery connector to disconnect it from the motherboard.

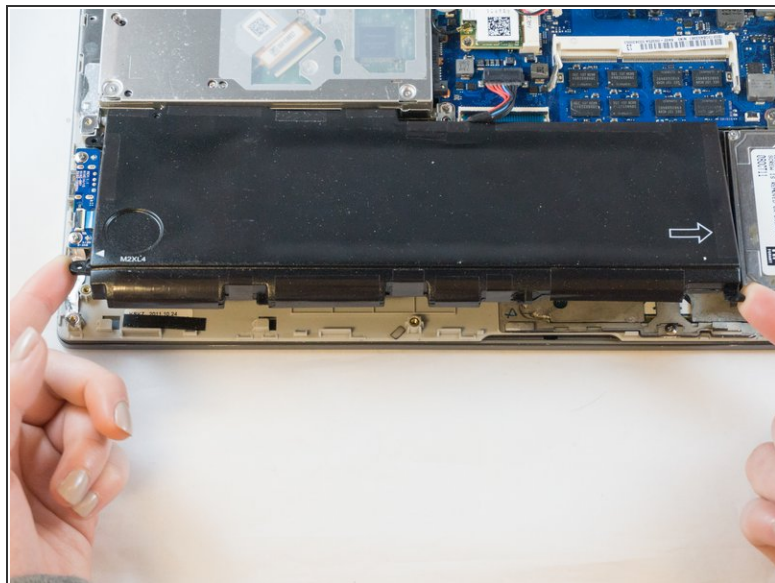
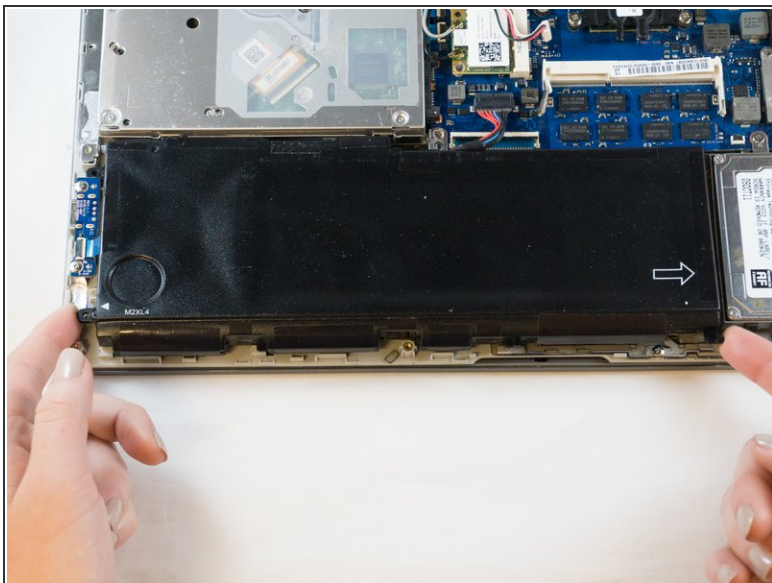
⚠ Be sure to pull straight backwards, or you risk damaging the wires.

Step 5




- Remove the two 4.4mm Phillips#00 screws from the battery case.

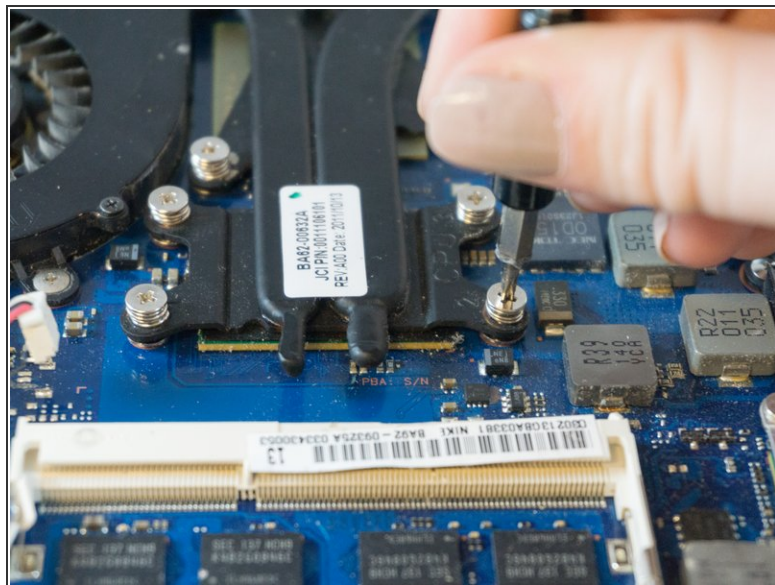
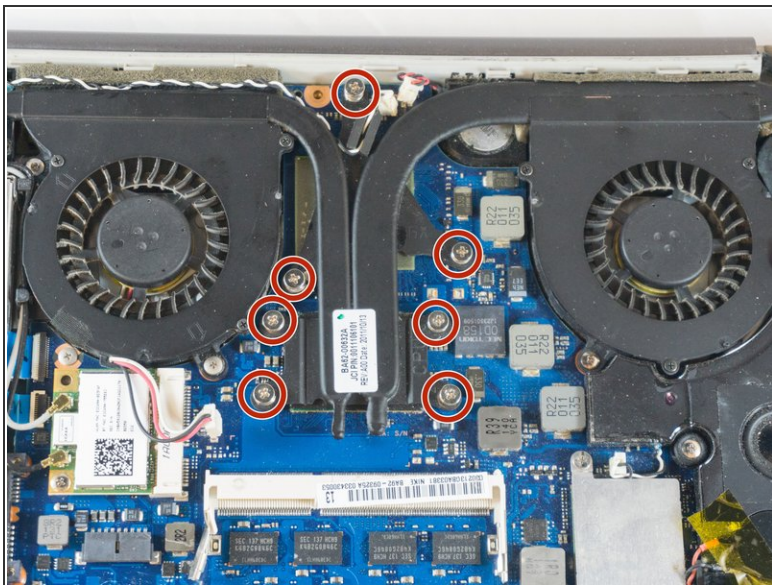
Step 6



- Place your fingers on the corner sections of the battery.
- Lift to remove the battery.

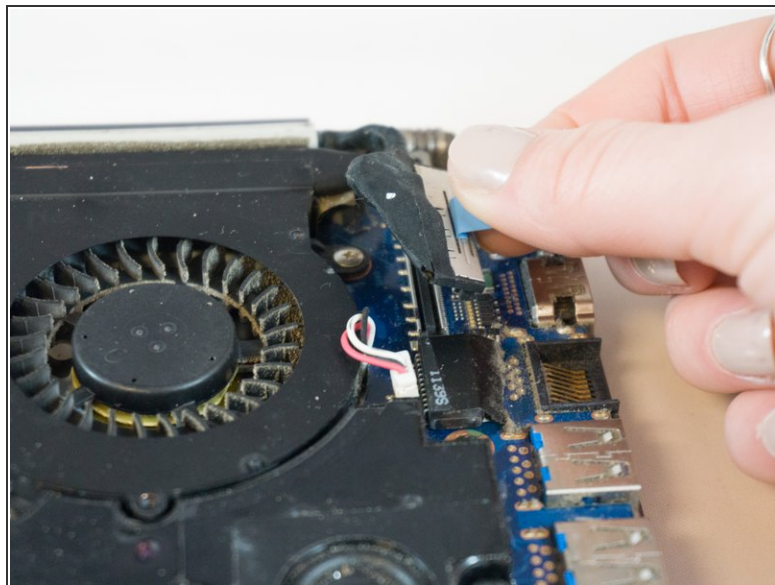
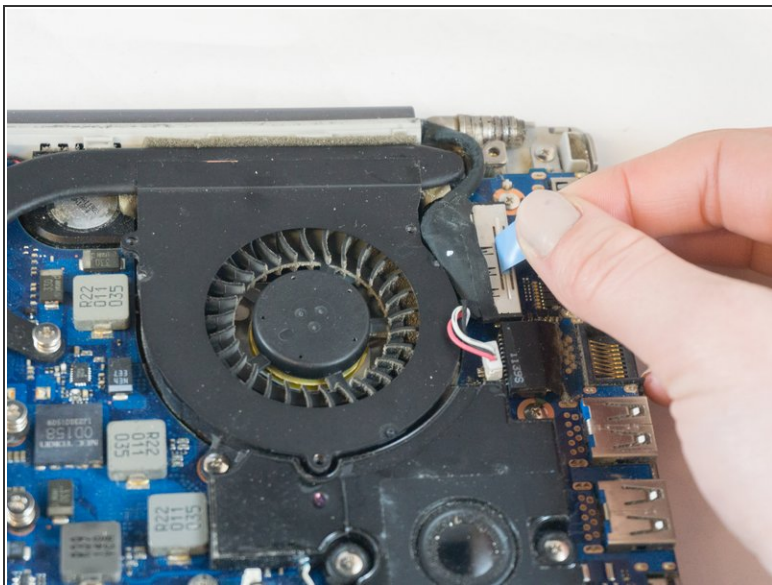
 If you choose to use tools to remove the battery be careful not to damage it. A damaged lithium-ion battery may leak dangerous chemicals and/or catch fire. Use only plastic pry tools.

Step 7 — Fan



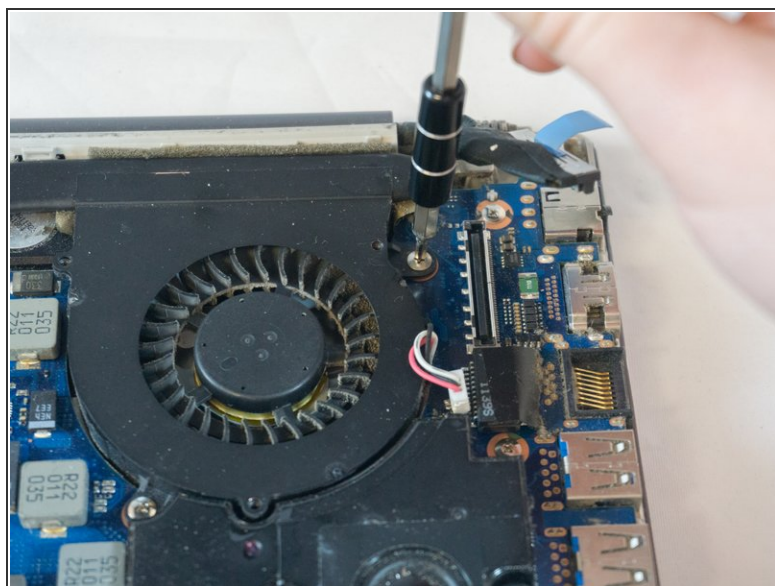
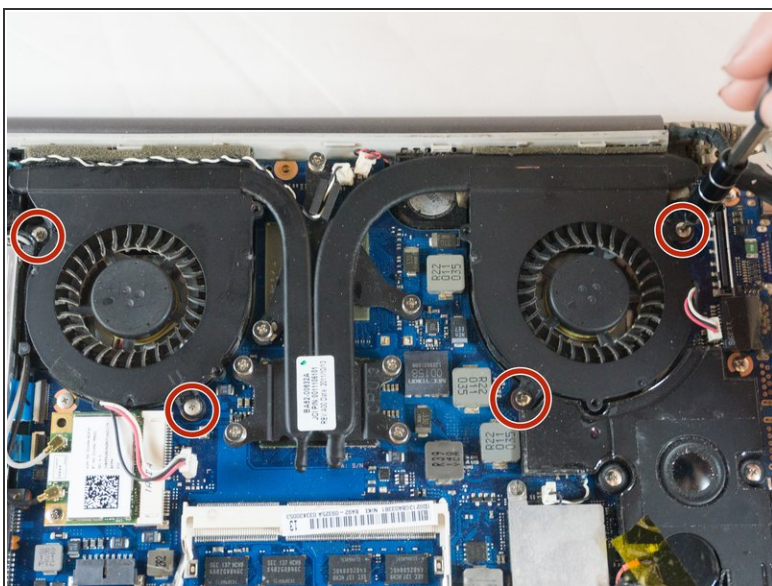
- Loosen but don't remove the 7 silver Phillips #00 3.5mm screws securing the fan to the motherboard. They should detach from the motherboard and remain attached to the fan assembly.

Step 8



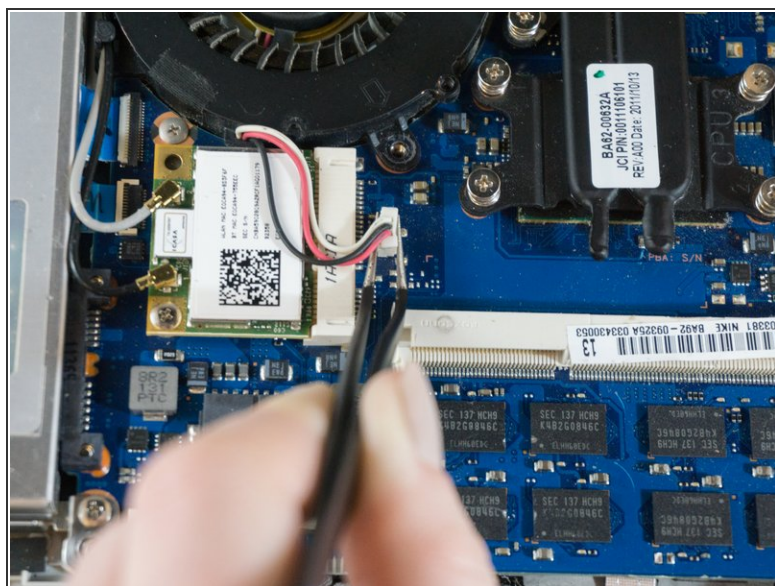
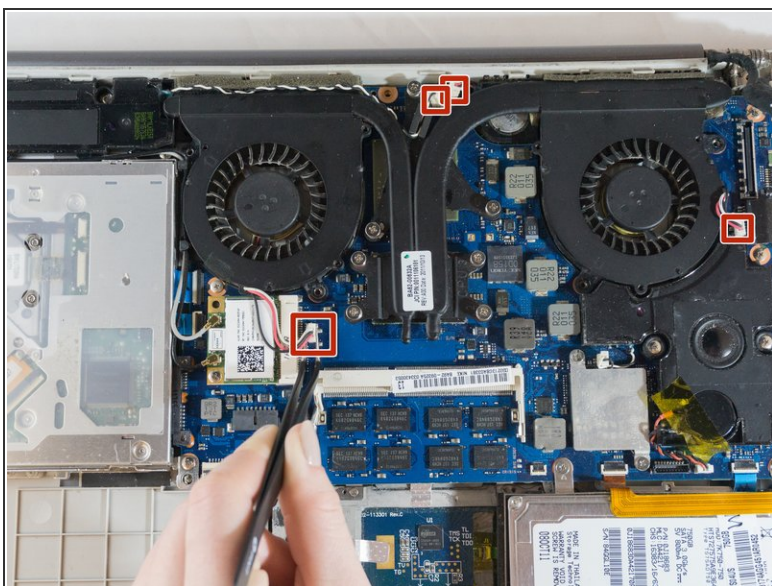
- Using your fingers, grasp the blue ribbon on the fan connector and pull straight up to disconnect it from the motherboard.
- ☑ To reinstall the cable, hold it near the end and push it straight into the connector, being careful not to kink the cable.

Step 9



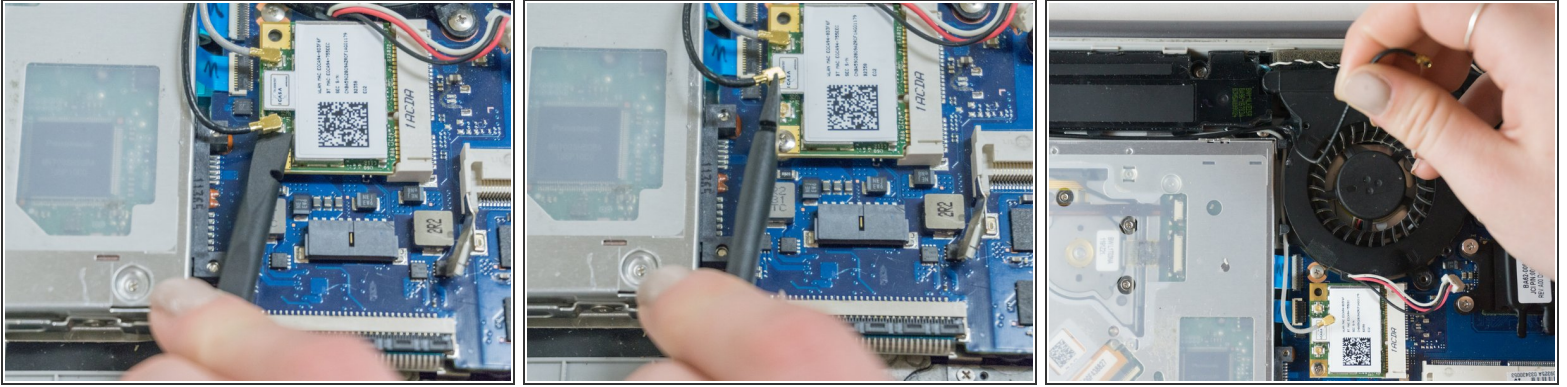
- Using the Phillips#00 remove the four 3.5mm screws securing the fan to the motherboard.

Step 10



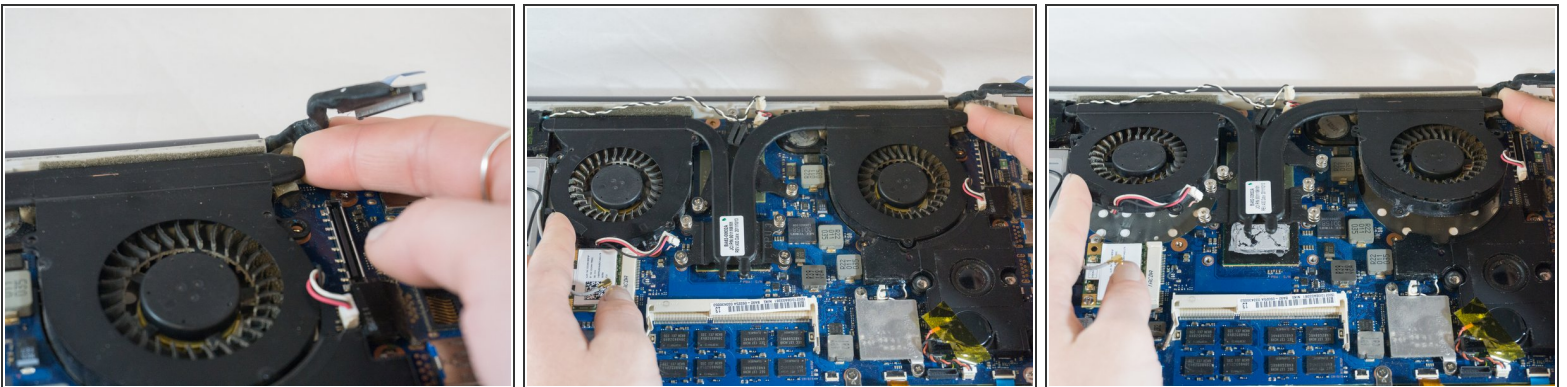
- Using tweezers, carefully pull up on the four power cable connectors to disconnect them from the motherboard.
- ☒ These connections were originally soldered and will need a small drop of solder to be re-attached. Use this guide to learn [How To Solder and Desolder Connections](#)

Step 11



- Place the tip of the spudger under the metal caps of the black and grey coaxial connectors and pry upwards to disconnect them.
 - After they are disconnected, un-thread them from around the fan.
- ☒ To reinstall, hold the connectors in place and gently press them straight down. The connectors “snap” into their sockets much like the metal snaps on a jacket.

Step 12



- Wedge your fingers under opposite corners of the fan and lift to remove it.

To reassemble your device, follow these instructions in reverse order.