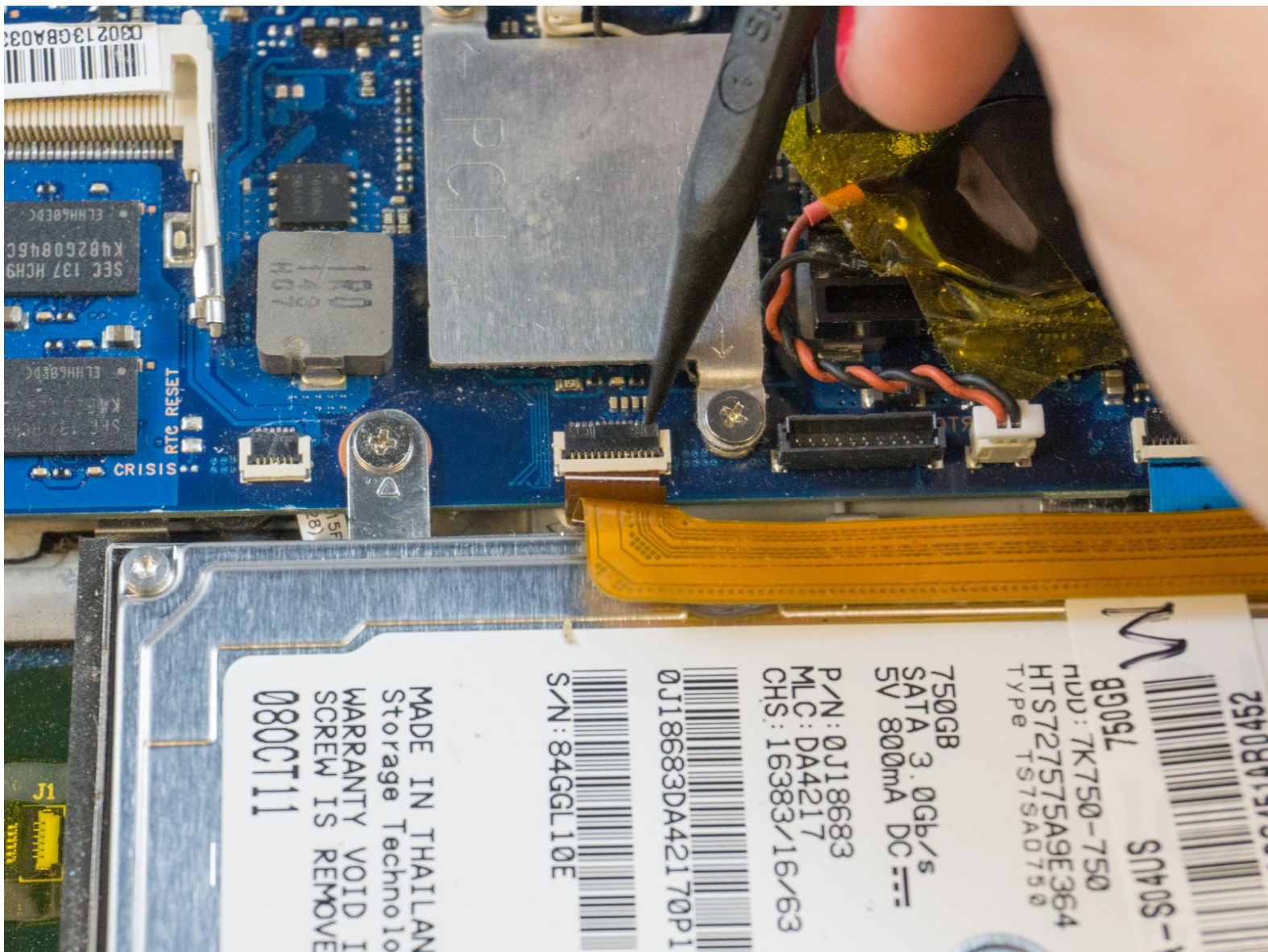




Samsung NP700Z5AH Hard Drive Replacement

Use this guide to replace the hard drive in your Samsung NP700Z5AH.

Written By: Erik



INTRODUCTION

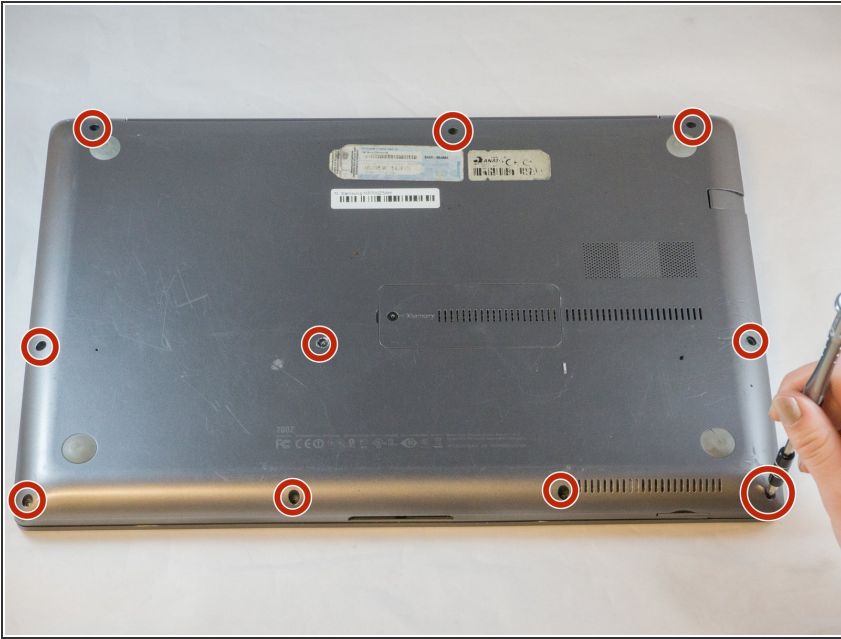
This guide will provide detailed steps to replace the hard drive in the Samsung device.



TOOLS:

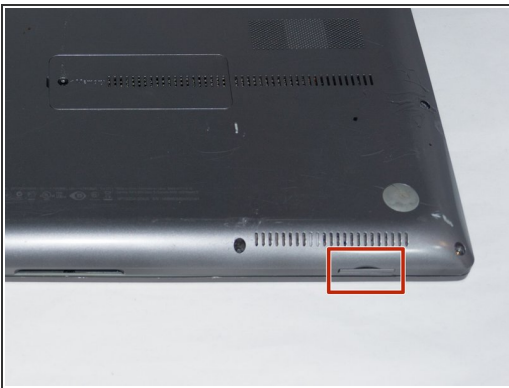
- [Phillips #00 Screwdriver](#) (1)
 - [Tweezers](#) (1)
 - [Spudger](#) (1)
-

Step 1 — Battery



- Remove the ten 6.6mm Philips#00 screws securing the lower case to the upper case.

Step 2



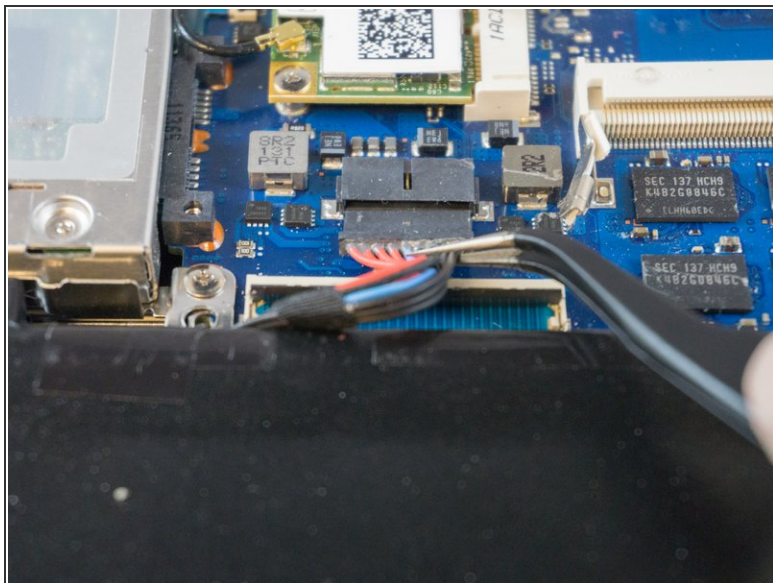
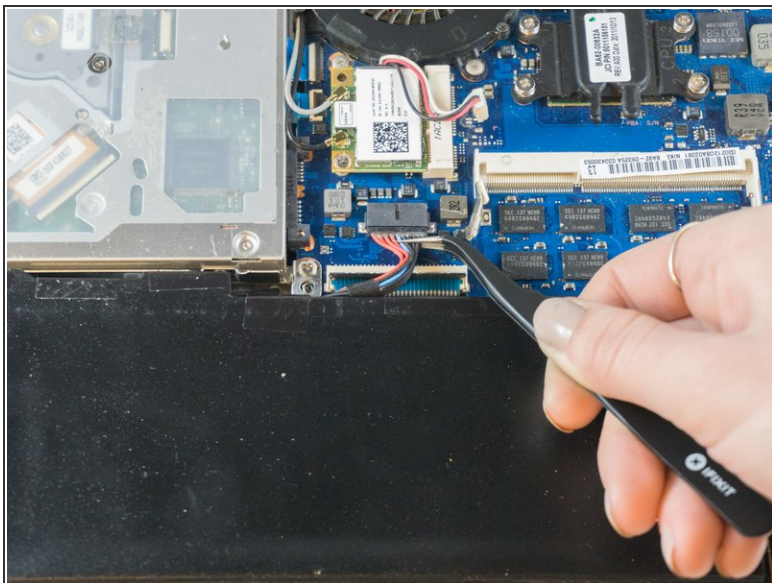
- Using your fingers, pinch the edge of the SD card and pull to remove it.

Step 3



- Wedge your fingers in between the upper case and the lower case
- Gently pull the lower case away from the upper case to remove it

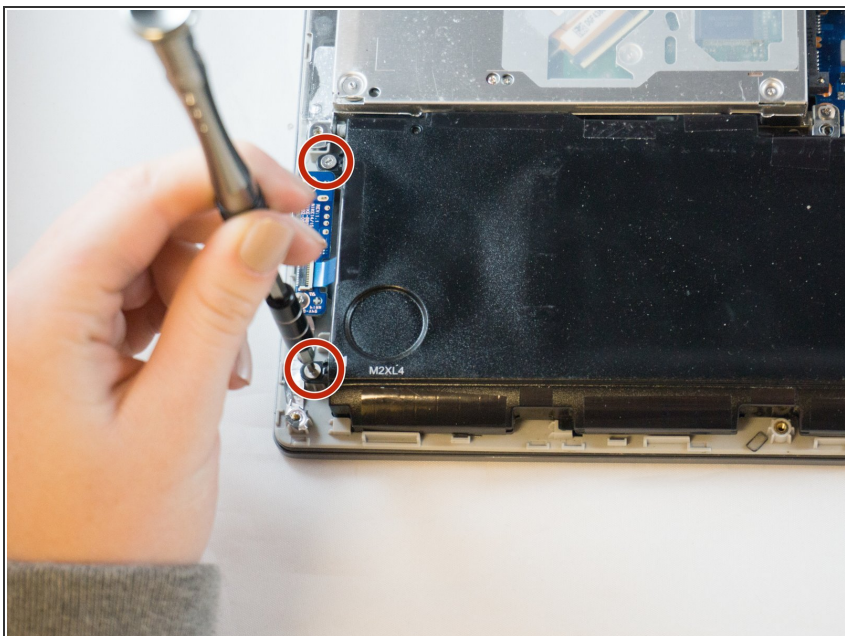
Step 4



- Using tweezers or your fingertips, carefully pull on the battery connector to disconnect it from the motherboard.

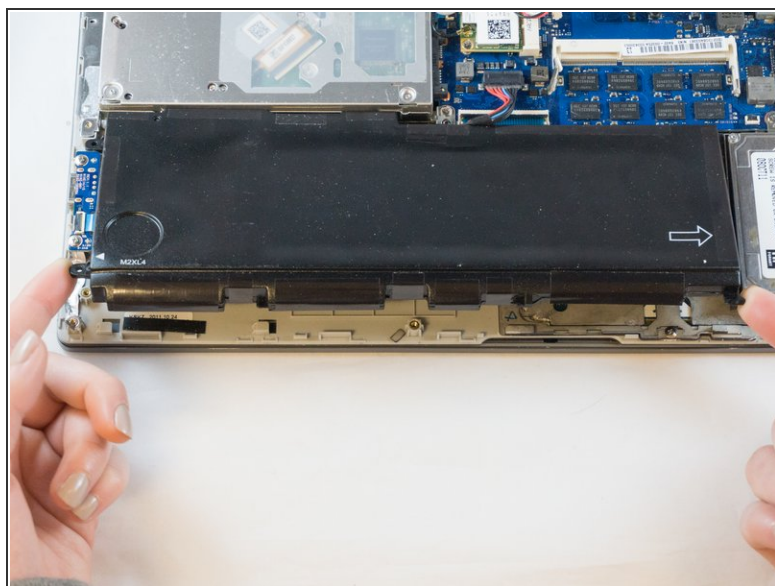
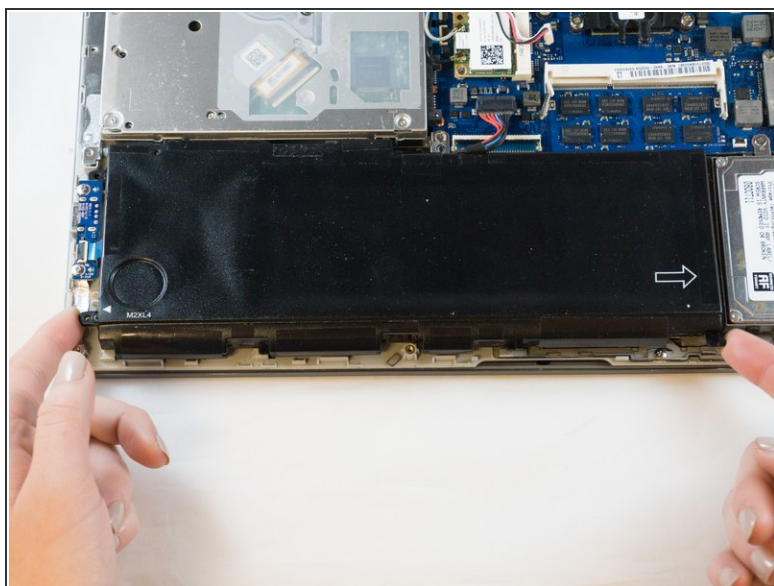
⚠ Be sure to pull straight backwards, or you risk damaging the wires.

Step 5




- Remove the two 4.4mm Phillips#00 screws from the battery case.

Step 6



- Place your fingers on the corner sections of the battery.
- Lift to remove the battery.

 If you choose to use tools to remove the battery be careful not to damage it. A damaged lithium-ion battery may leak dangerous chemicals and/or catch fire. Use only plastic pry tools.

Step 7 — Hard Drive

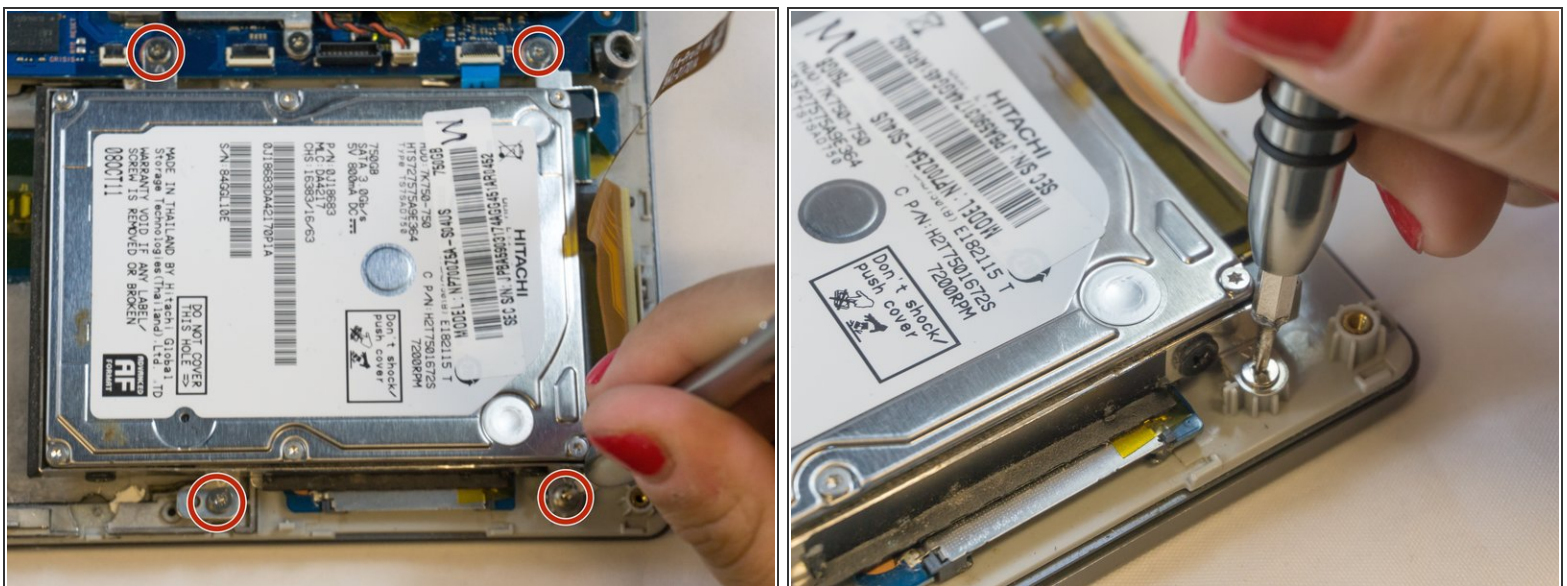


- Using the tip of the spudger, flip up the small locking flap on the ZIF connector. Now you can pull the cable.

⚠ Be sure to pry up on the hinged flap, not the connector socket.

- ☞ The white line on this ribbon cable marks the edge of the connection area. To reinstall, insert the cable into the connector up to this line, and then close the locking flap. If the cable doesn't insert easily up to (or very near to) this line, it's probably misaligned and needs to be gently removed and repositioned.

Step 8



- Using the Phillips#00, remove the four 4.5mm screws securing the hard drive.

Step 9



- Using your fingers, grasp the edges of the hard drive and lift to remove it.

To reassemble your device, follow these instructions in reverse order.