



Samsung NP900X4B Back Panel Replacement

This guide will show you how to remove the back panel of the Samsung NP900X4B.

Written By: Brian Miller



INTRODUCTION

This guide will give a step by step walk through on how to remove the back panel of the laptop. Before replacing the back cover make sure the device is unplugged and turned off as a safety step.

TOOLS:

- [Phillips #0 Screwdriver](#) (1)
-

Step 1 — Back Panel



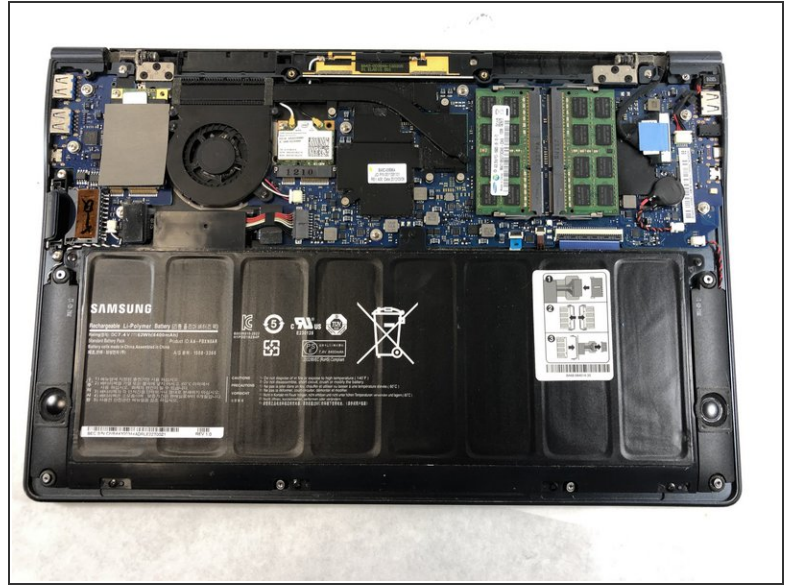
- First turn the computer over so you are looking at the back panel.
- Next locate all ten Phillips #0 3.5mm screws on the back panel that are securing it down.

Step 2



- Next remove all 3.5mm Phillips #0 screws shown in the previous step.

Step 3



- After all screws are removed, lift up the back panel as shown.

To reassemble your device, follow these instructions in reverse order.