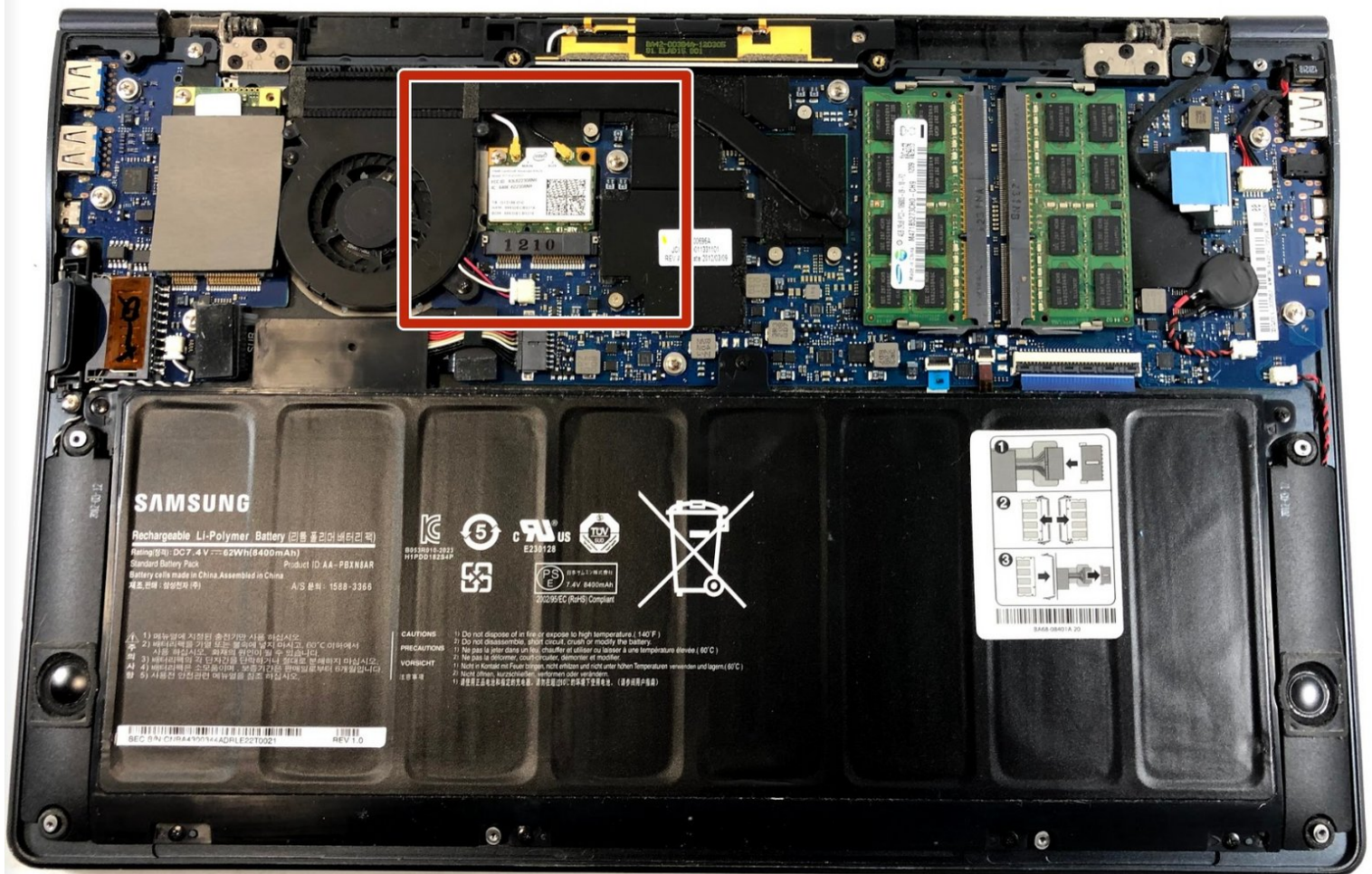




Samsung NP900X4B Wifi Card Replacement

How to replace a Samsung NP900X4B wifi card.

Written By: Jacob Drohan



INTRODUCTION

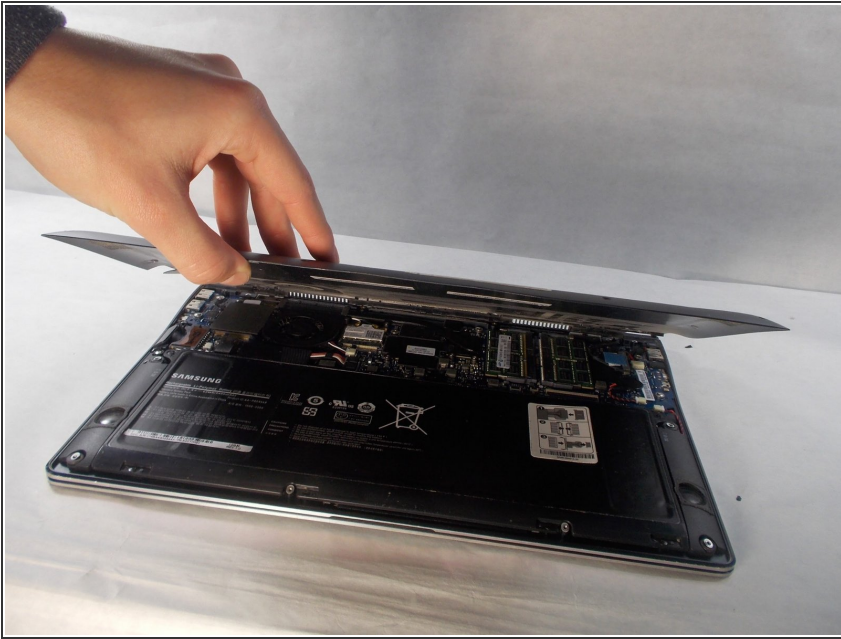
The Wifi Card in your laptop is a necessary component in order to access online features that a computer included. If your card is damaged or broken it will need to be removed for it to be replaced or repaired.



TOOLS:

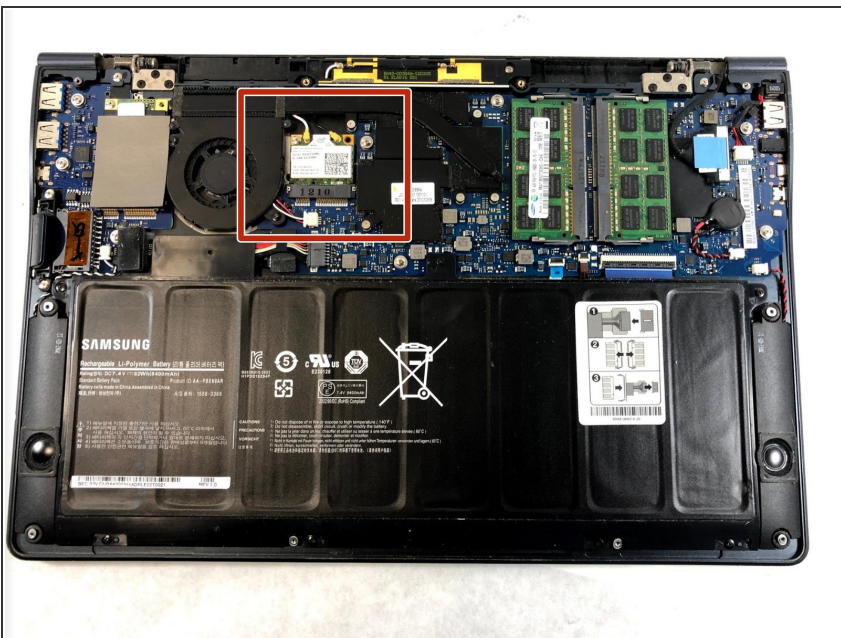
- [Phillips #00 Screwdriver](#) (1)
-

Step 1 — Wifi Card



- This guide should be attempted after the removal of the back panel is completed.
- The Battery Removal guide demonstrates how to do this. The link to this guide is posed here. [Samsung NP900X4B Battery Replacement](#)

Step 2



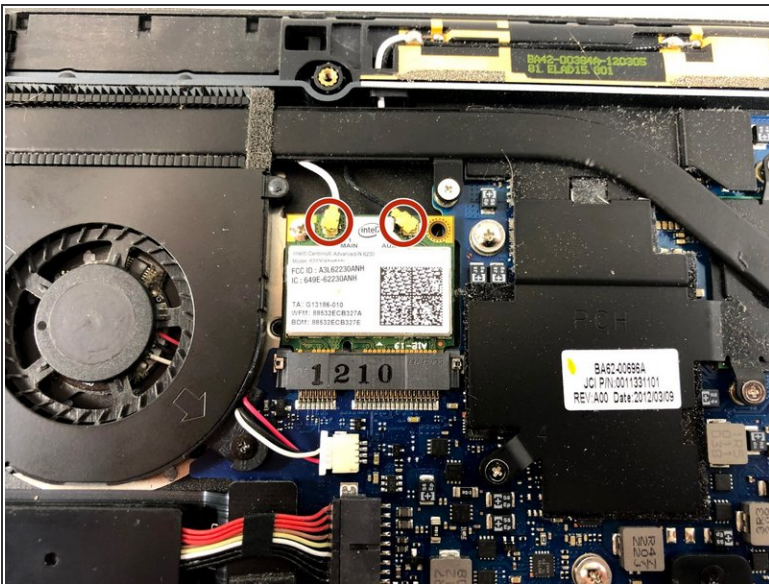
- In order to continue, you need to observe the inside of the laptop and find where the Wifi Card is located.

Step 3



- After finding the Wifi Card, you will discover two more 2.5mm Phillips #00 screws which hold the card in place.
- The screws locations are shown in the image.
- The same bit piece will be used to unscrew these (PH00/PH000). After completing this continue to the next step.

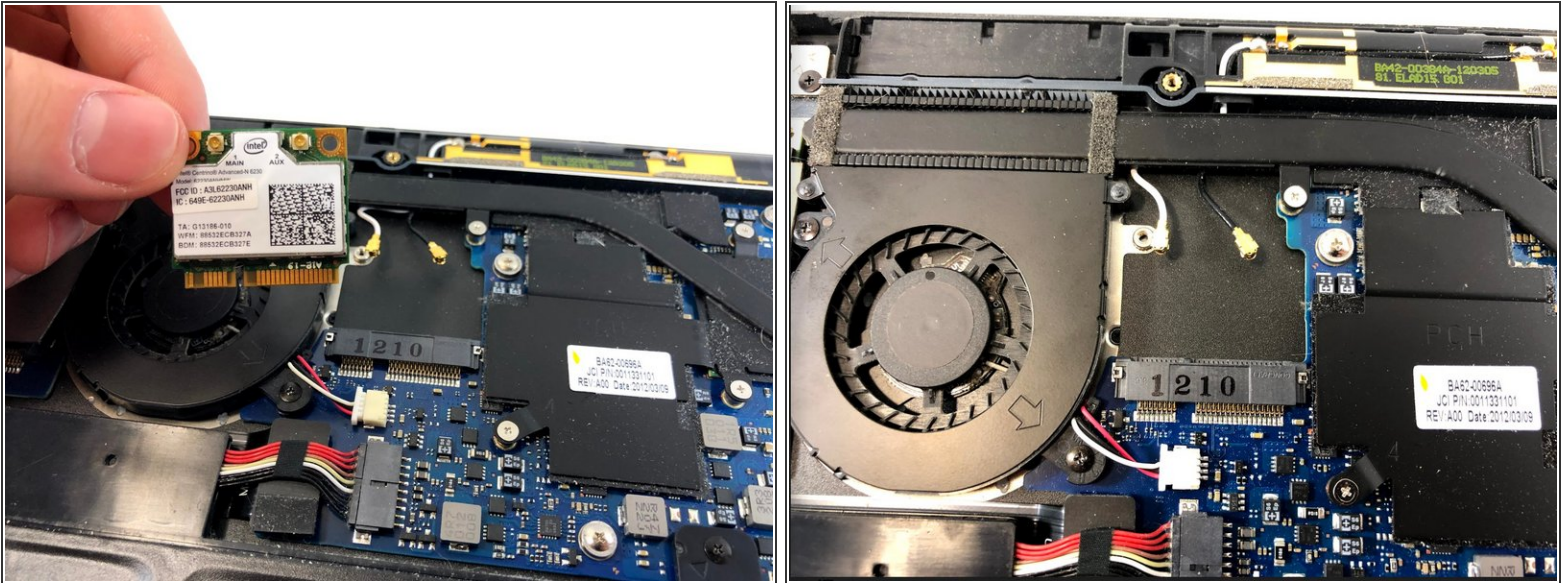
Step 4



- There will be two wires connecting to the Wifi Card from the laptop.
- These wires can be removed with one of the plastic tools in the iFixit toolkit by applying slight force onto them.
- After removing the wires move on to the next step.

This document was generated on 2020-04-04 09:29:26 AM (MST).

Step 5



- This last step is the easiest of them all, all you need to do it pick up the Wifi Card from its position and you're done!
- Now you are able to replace the card by following these steps in reverse or have the card further repaired.

To reassemble your device, follow these instructions in reverse order.