



Written By: Kelsea Weber



---

## INTRODUCTION

This guide gives you a look at the major components of the Samsung NX Mini and provides complete disassembly instructions.

We highly suggest you use a [magnetic project mat](#) or an [organization tray](#). This camera has **many** different types of screws and keeping them organized is key to proper reassembly.



### TOOLS:

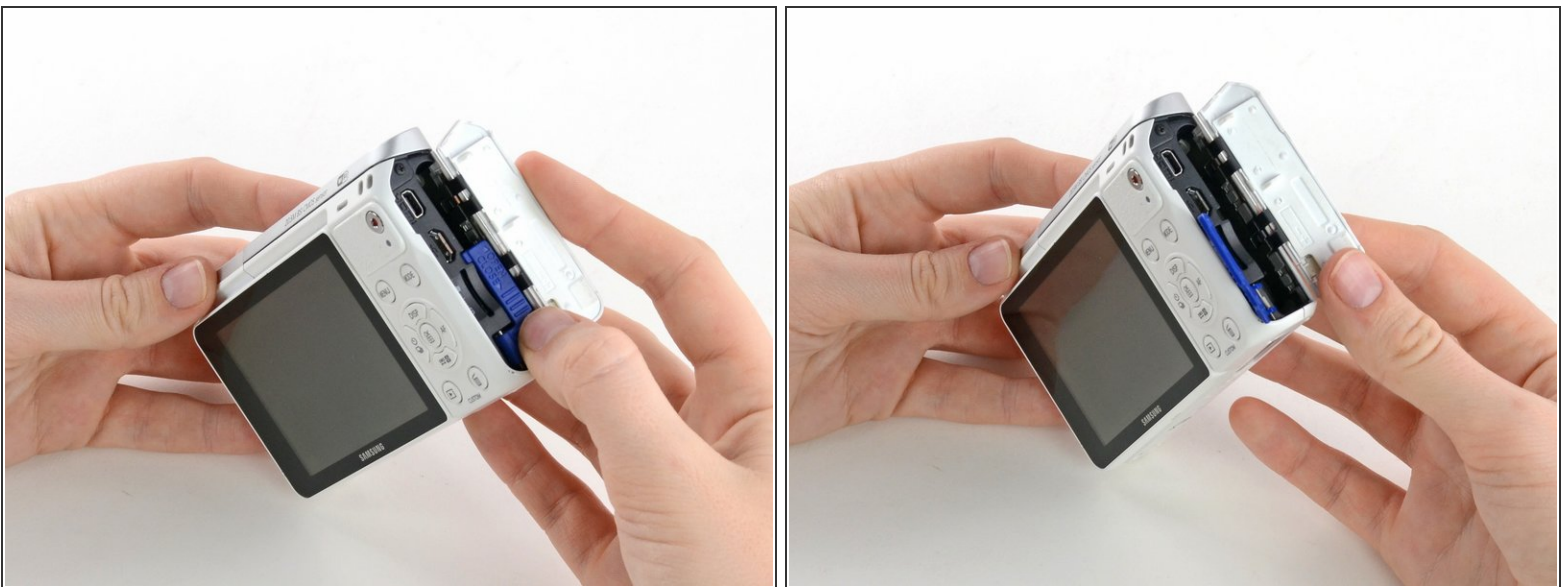
- [Phillips #00 Screwdriver](#) (1)
  - [Spudger](#) (1)
  - [Tweezers](#) (1)
  - [Magnetic Project Mat](#) (1)
-


## Step 1 — Battery



- Orient the camera so the button panel and LCD are facing you.
- Use a spudger or fingernail to open the battery compartment on the right side of the camera.

## Step 2



- Push the blue trapdoor to the left to release the battery, and remove the battery.
-  There is no battery shown in this photo.

## Step 3 — Front Case



- Use a Phillips #00 screwdriver to remove the 4 mm screw inside the battery compartment.

## Step 4



- Remove the 4 mm Phillips #00 screw hiding in the external flash port.



## Step 5



- Remove the four 5 mm Phillips #00 screws from the lens assembly.

## Step 6



- Remove the metal lens mount by hand or with tweezers.
- ⚠ Be careful not to touch the sensor in the center of the lens assembly.

## Step 7



- Use tweezers to remove the inner metal ring.

## Step 8



- Use a Phillips #00 screwdriver to remove the three 4 mm screws from the bottom of the case.

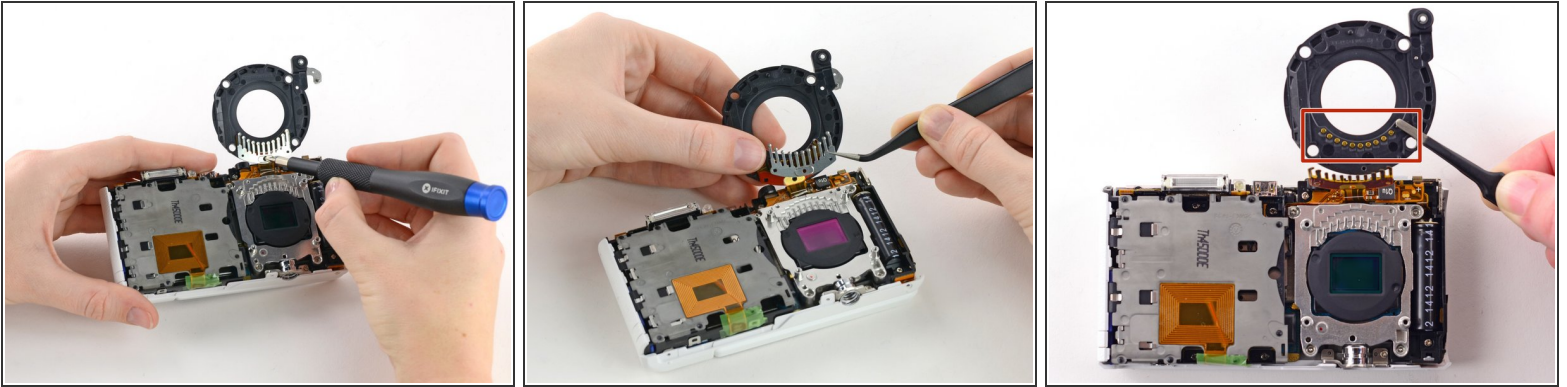
## Step 9



- Use your hands to slowly pull the front casing away from the camera.
- ⓘ The case is attached with multiple clips that may make a cracking noise as you pull it away from the camera.



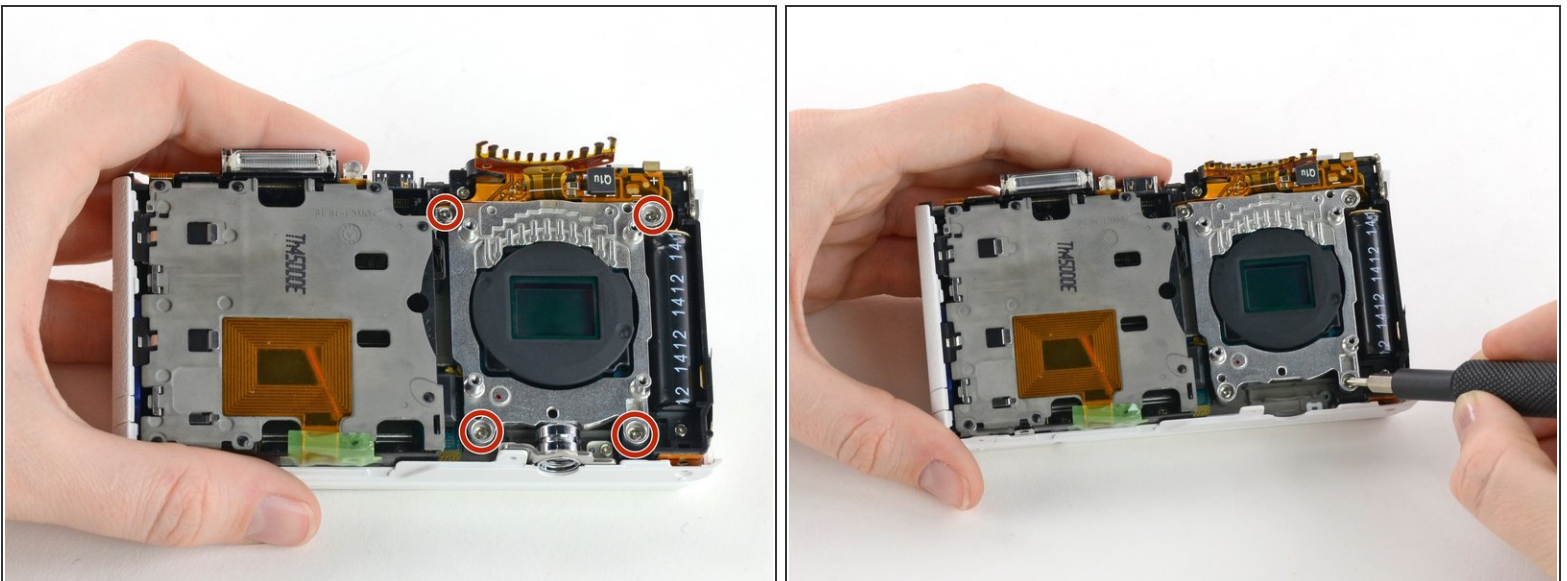
## Step 10 — Sensor



- Gently flip the sensor cover back to expose the screw attaching the sensor cover to the ribbon cable.
- Use a Phillips #00 screwdriver to remove the 3 mm screw from the sensor cover.
- Use tweezers to remove the metal contact cover. Be sure to carefully remove the cover so the gold contacts remain in place.

⚠ The gold lens contacts lying beneath the ribbon cable become loose when the screw and contact cover are removed.

## Step 11

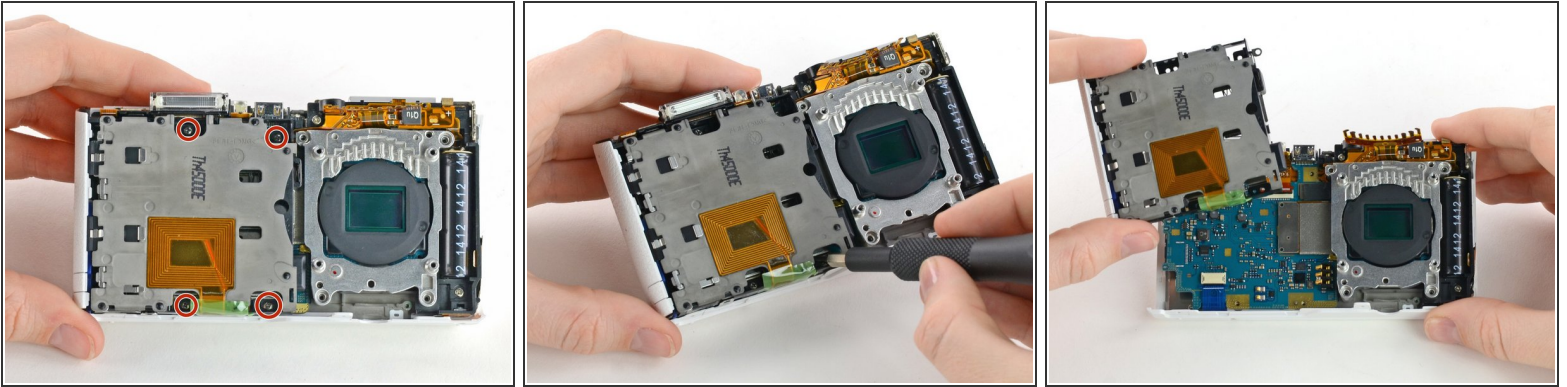


- Remove the four 4 mm Phillips #00 screws holding the sensor mount in place.

This document was generated on 2019-09-22 02:49:38 AM (MST).

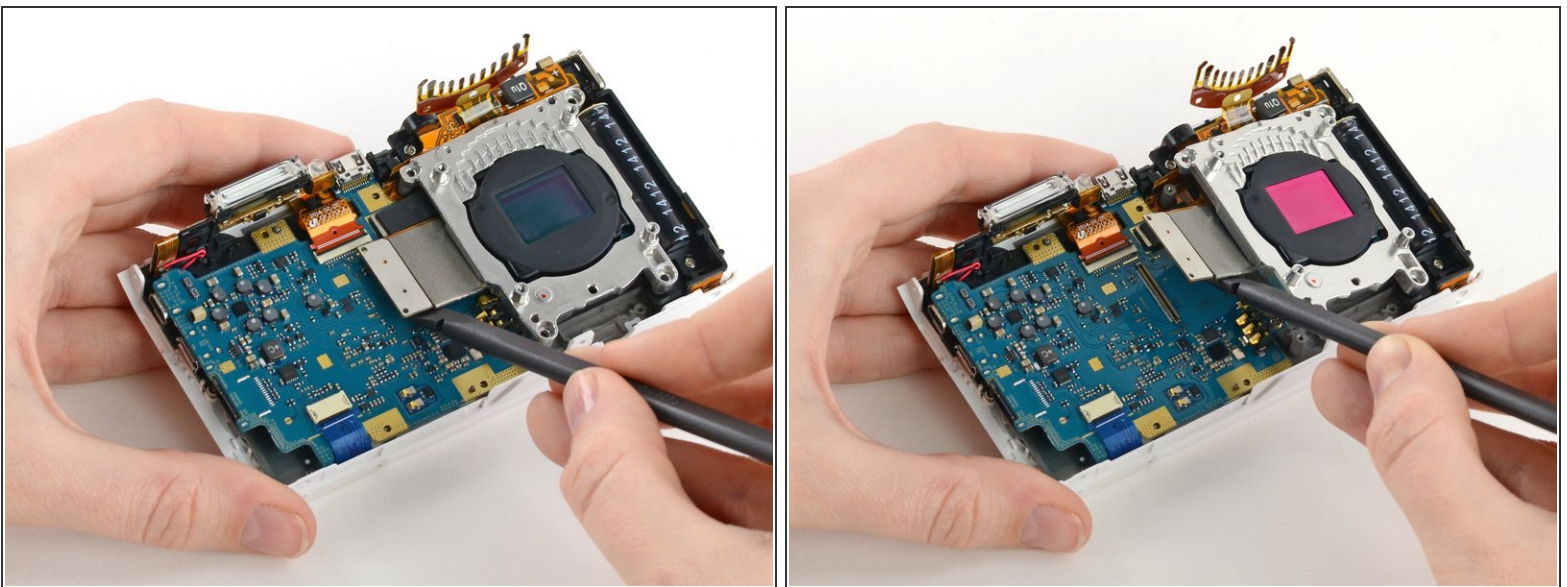


## Step 12



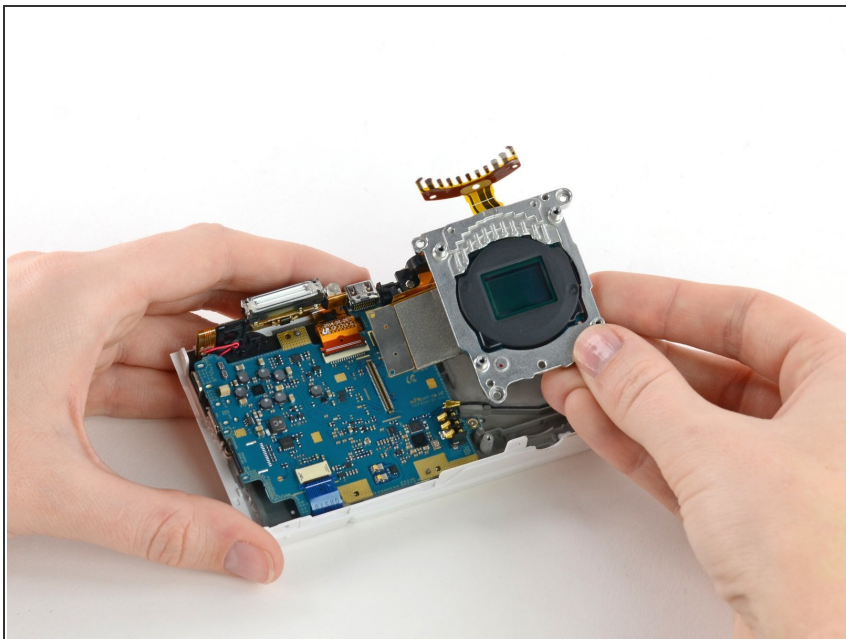
- Remove the four 4 mm Phillips #00 screws securing the battery compartment to the mother board.
- Remove the battery compartment.

## Step 13



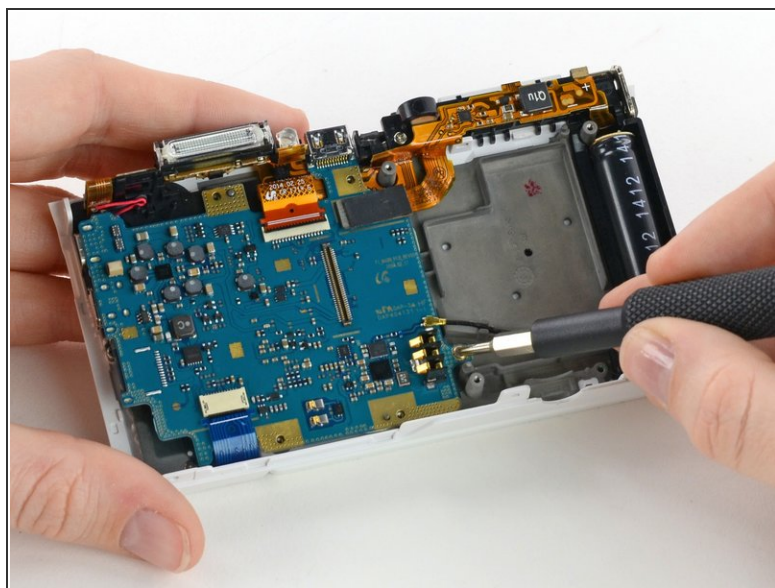
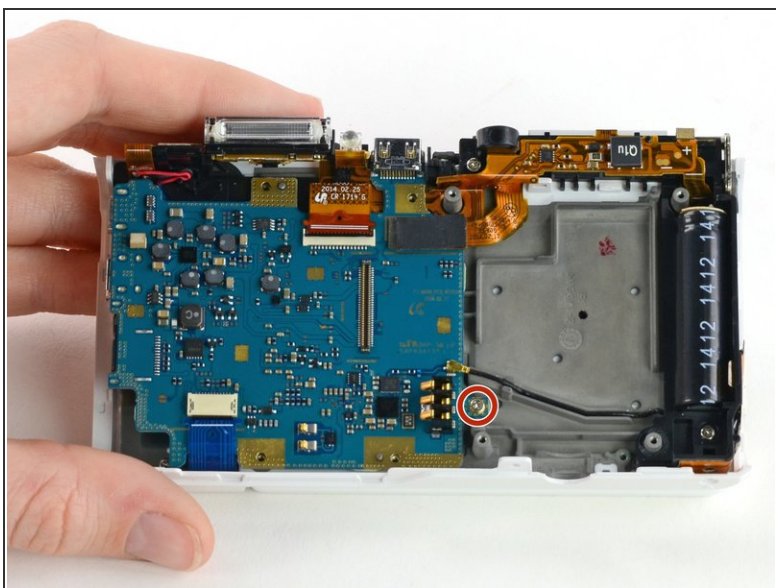
- Use a spudger to disconnect the ribbon cable connecting the image sensor to the motherboard.

## Step 14



- Gently remove the sensor mount from the camera case.

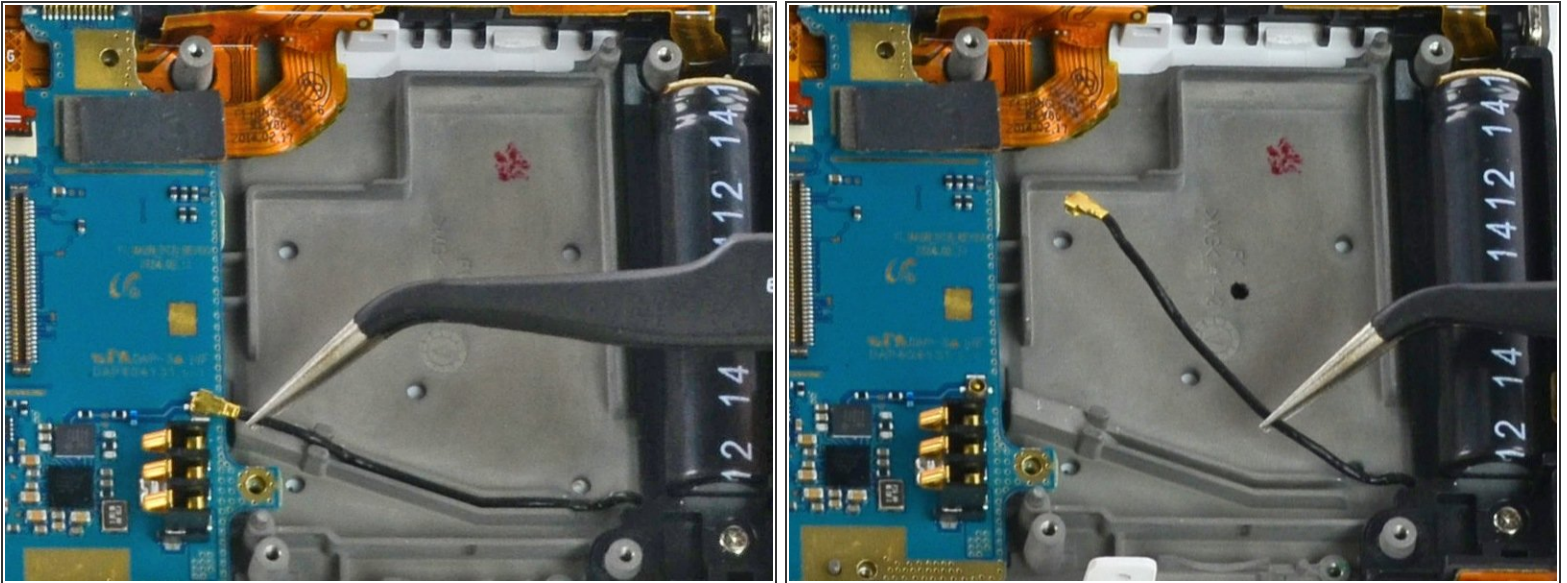
## Step 15 — Motherboard



- Use a Phillips #00 screwdriver to remove the 3 mm screw located below the wifi antenna.

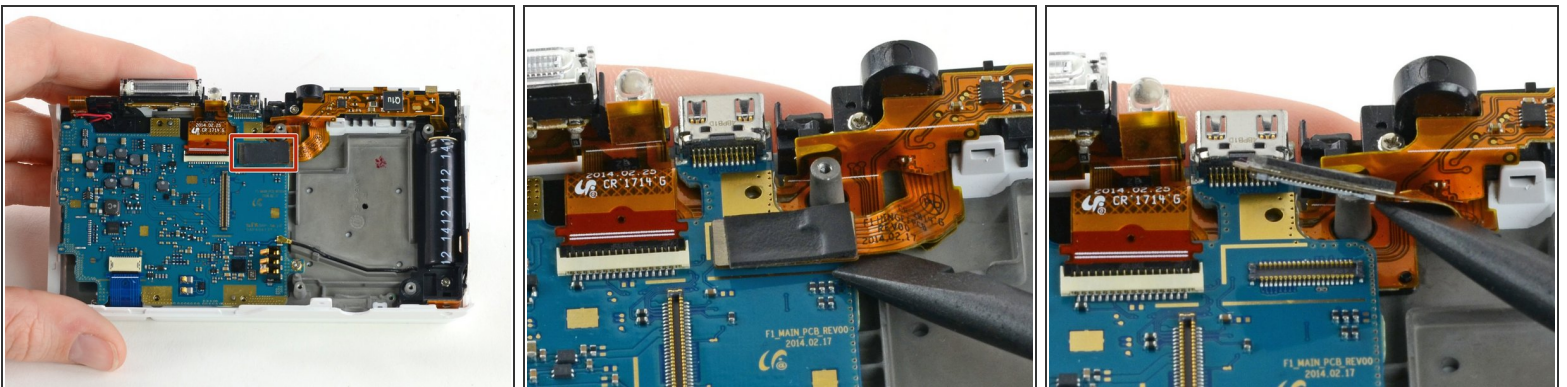


## Step 16



- Use tweezers to disconnect the wifi antenna from the motherboard.

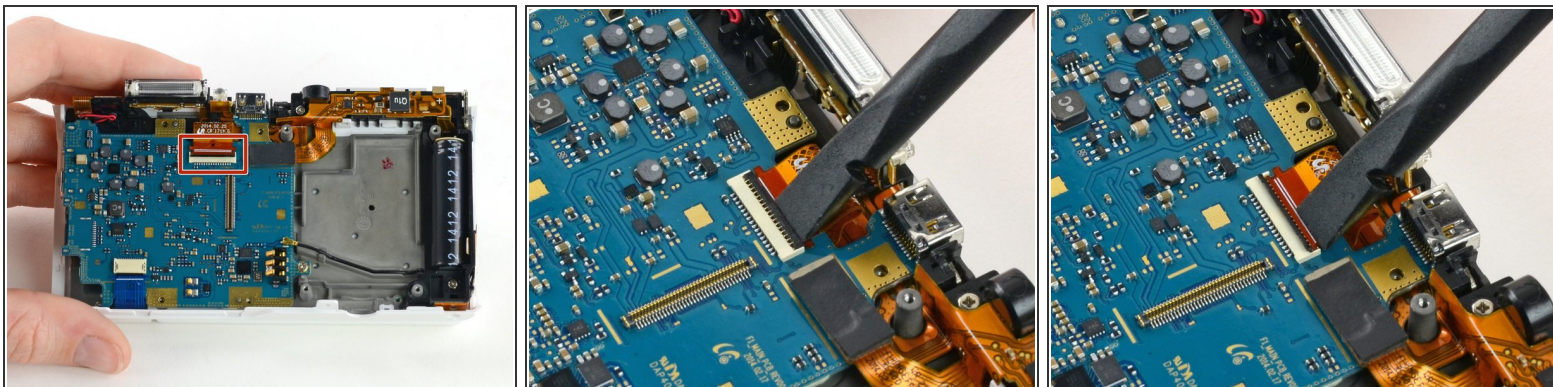
## Step 17



- Use a spudger to disconnect the LCD ribbon cable by prying it straight up from the motherboard.

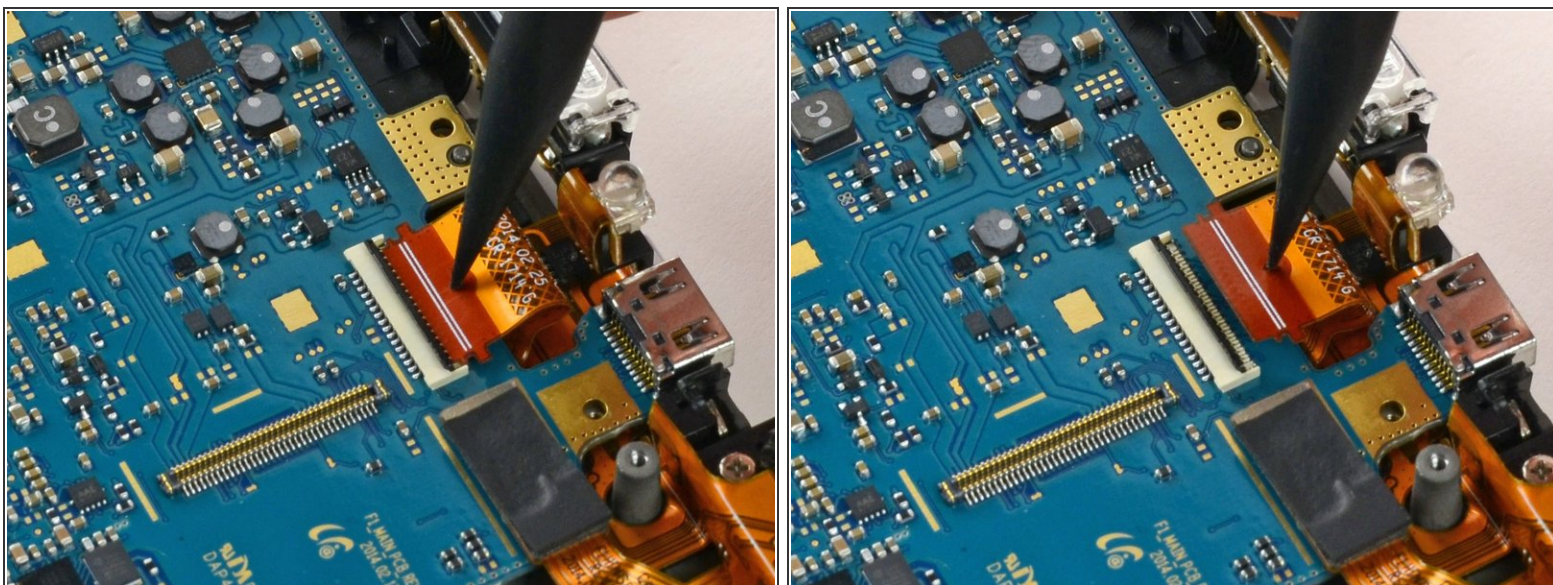


## Step 18



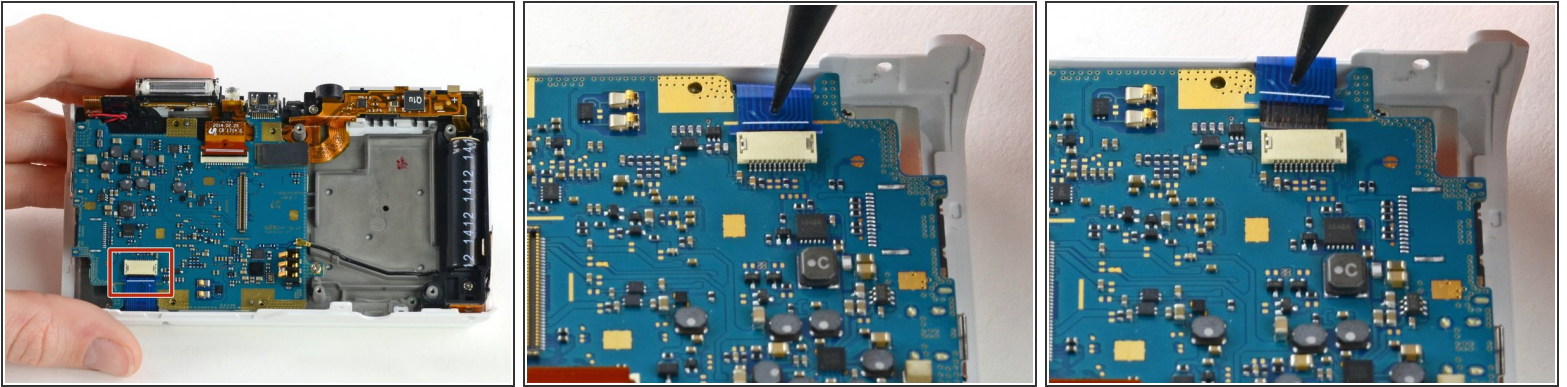
- Use a spudger to unlock the topmost ZIF connector by flipping open the black flap.

## Step 19



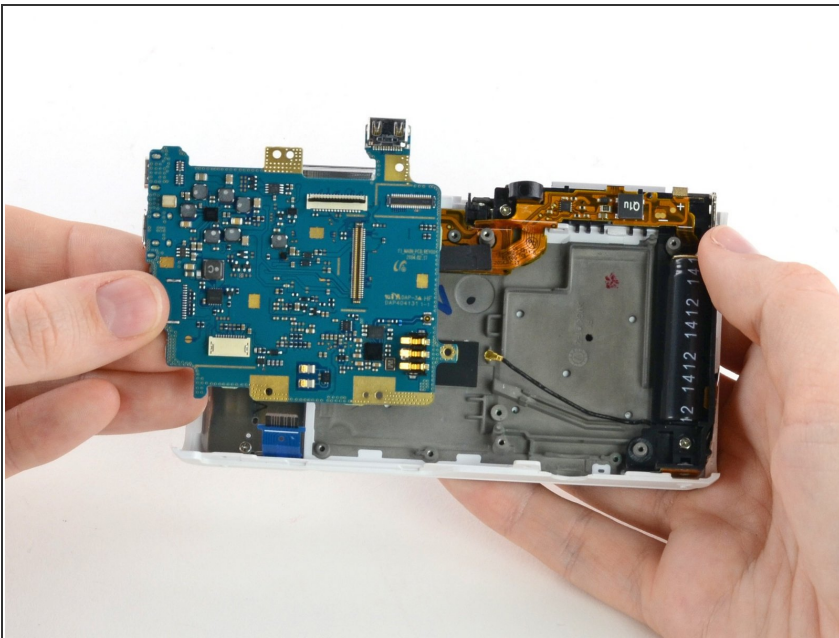
- Insert the pointed end of a spudger into the hole in the middle of the ribbon cable.
- Gently pull the spudger back to slide the ribbon cable out of its connector.

## Step 20



- Disconnect the blue ribbon cable from the motherboard.
- Insert the pointed end of a spudger into the hole in the top of the ribbon.
- Gently pull the ribbon from the connector.

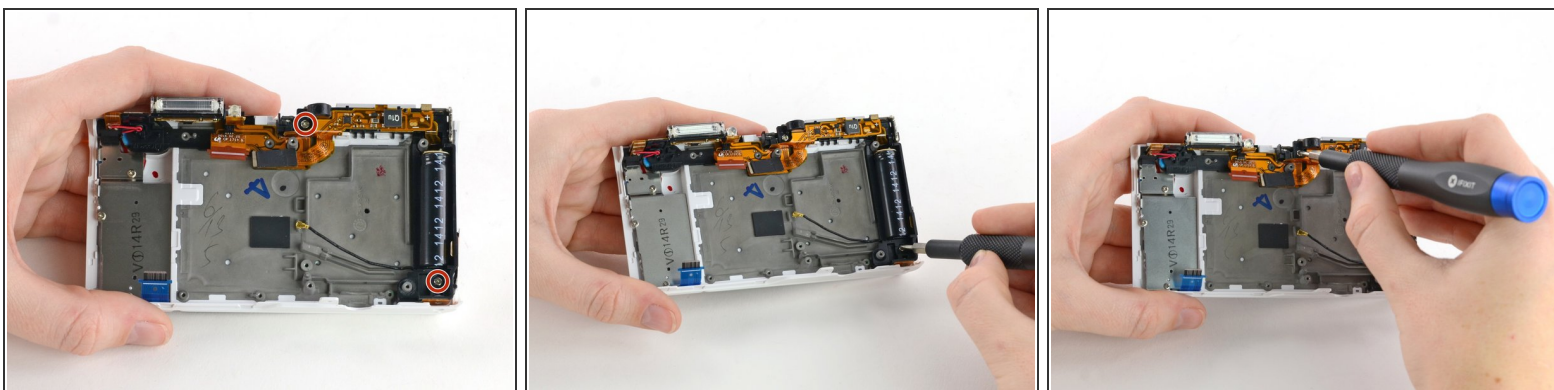
## Step 21



- Remove the motherboard from the camera.

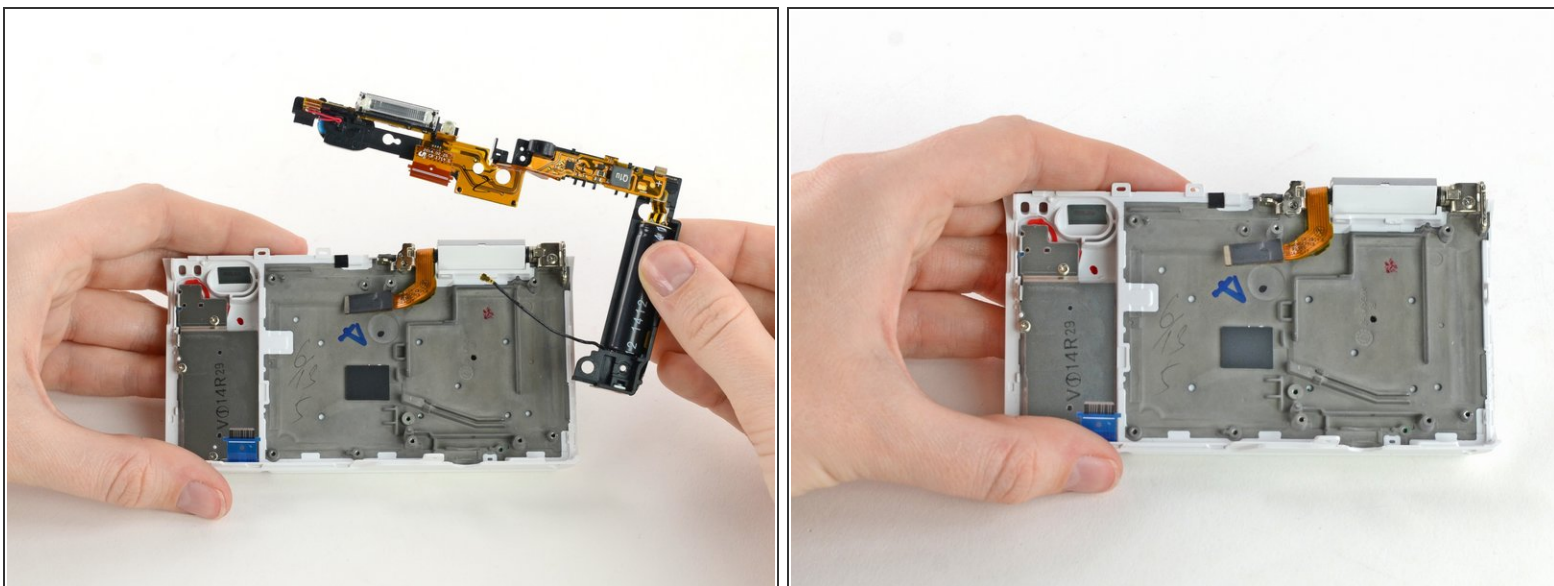


## Step 22 — Flash Assembly



- Use a Phillips #00 screwdriver to remove the two 5 mm screws holding the flash assembly to the camera case.

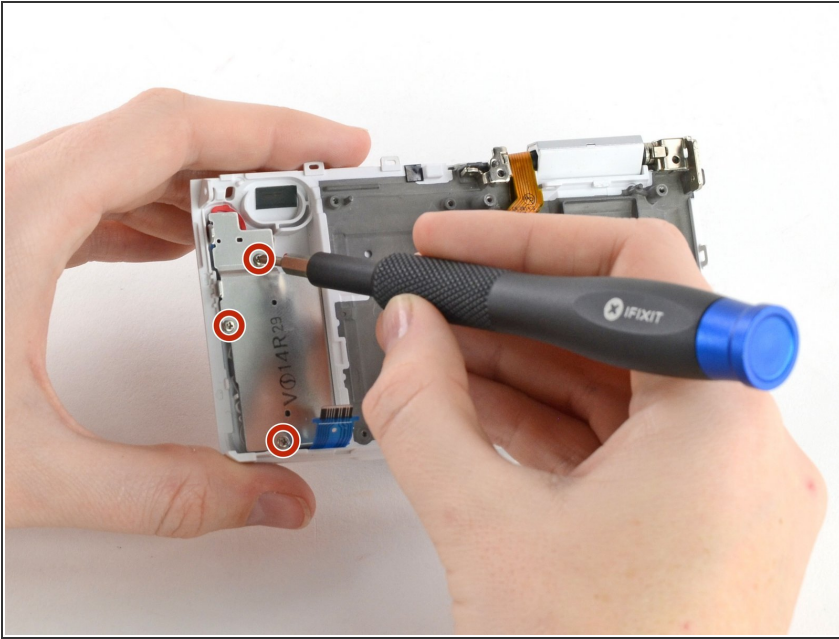
## Step 23



- Remove the flash assembly by gently pulling it away from the case.
- ⓘ You may need to use a spudger to release some of the clips holding the assembly in place.
- ⚠ Avoid touching the ends of the capacitor (the large black cylinder on the right). Capacitors that haven't been discharged may cause electric shock. Learn how to discharge a capacitor [here](#).

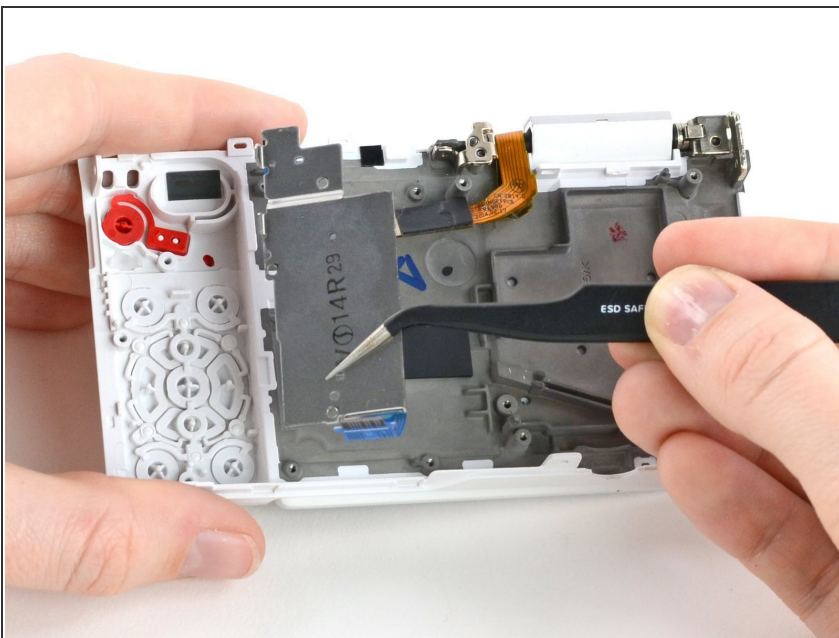


## Step 24 — Button Panel



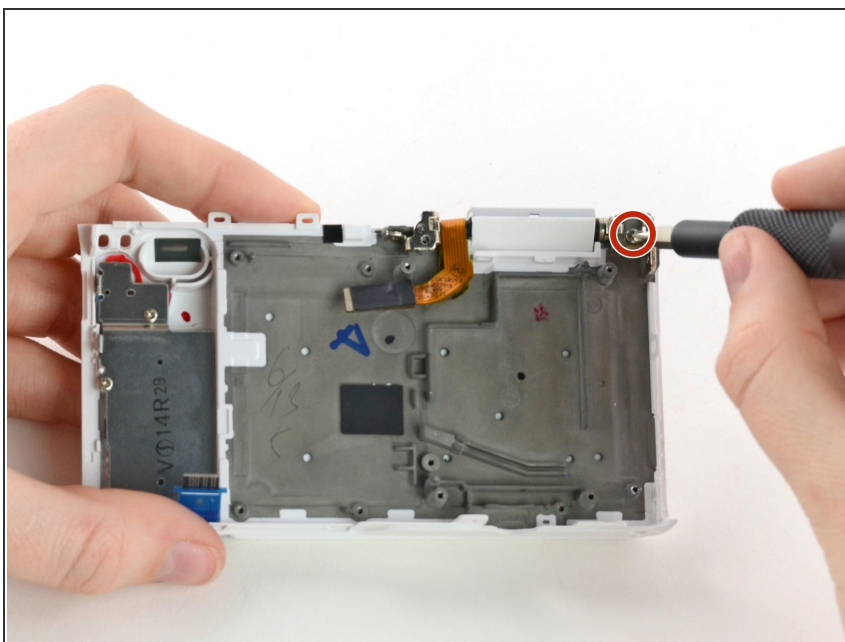
- Remove the three 4 mm Phillips #00 screws securing the button panel to the camera case.

## Step 25



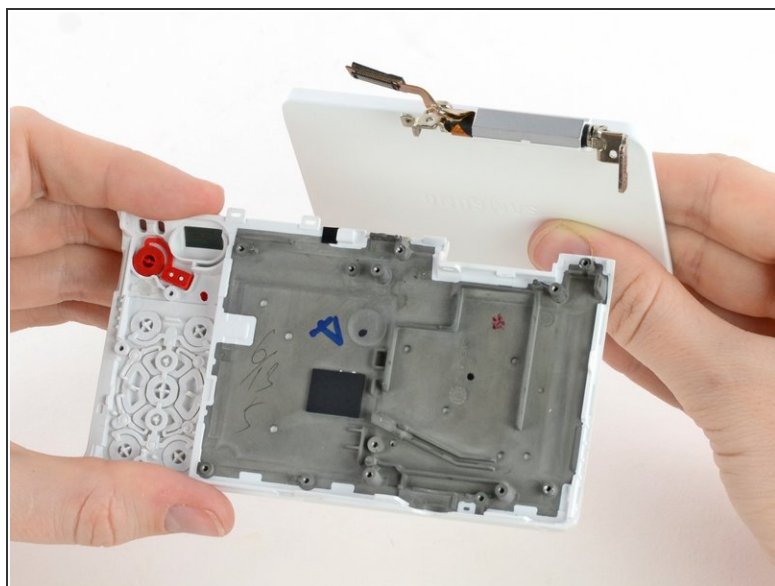
- Use tweezers to lift the button panel cover away from the case.

## Step 26 — LCD



- Remove the 5 mm Phillips #00 screw in the top right corner of the LCD assembly.

## Step 27



- Tilt and wiggle the LCD to remove it from the case.

## Step 28 — Samsung NX Mini Disassembly



- You have disassembled the Samsung NX Mini!
- ⓘ The capacitor can be removed from the flash assembly by desoldering. Learn about soldering techniques [here](#).

To reassemble your device, follow these instructions in reverse order.