



Samsung NX Mini Front Case Replacement

This guide will show you how to remove the front case of the Samsung NX Mini. We highly suggest using a Magnetic Project Mat for this repair. Cameras have many different screws, and organization is important to proper reassembly.

Written By: Kelsea Weber



INTRODUCTION

Use this guide to replace a damaged front case or open the case to access other components of your camera.



TOOLS:

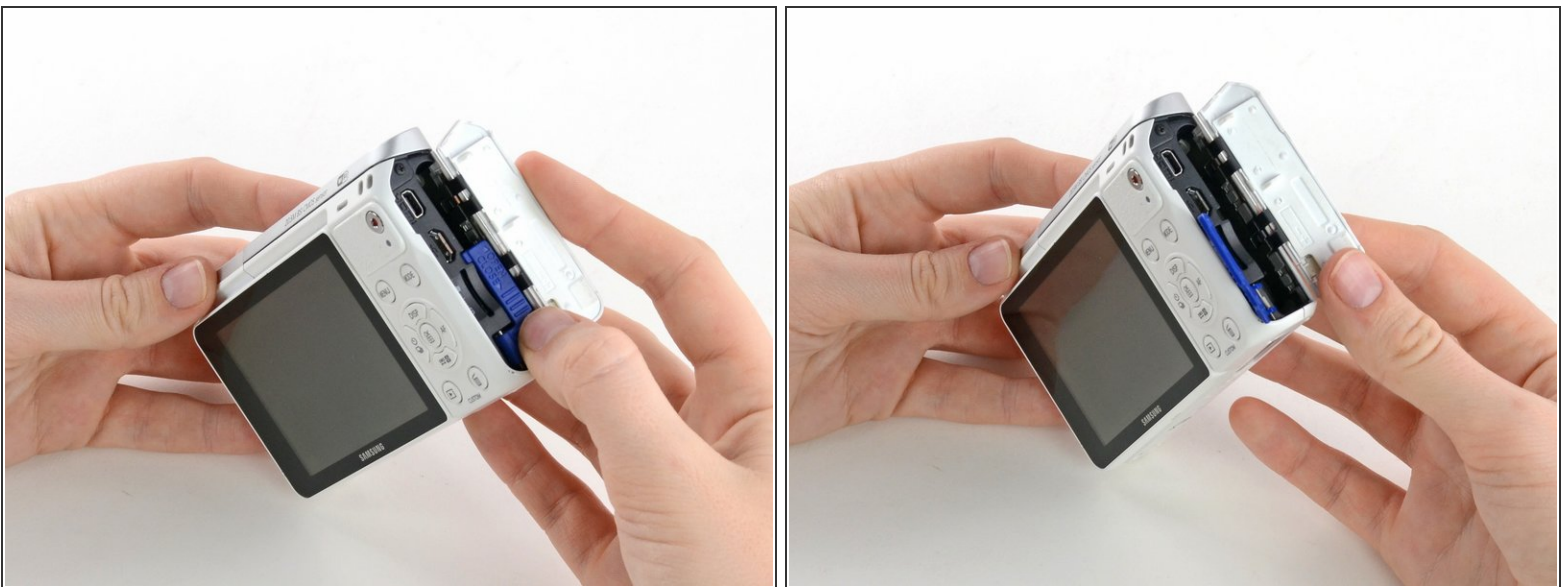
- [Phillips #00 Screwdriver](#) (1)
 - [Tweezers](#) (1)
 - [Spudger](#) (1)
 - [Magnetic Project Mat](#) (1)
-


Step 1 — Battery



- Orient the camera so the button panel and LCD are facing you.
- Use a spudger or fingernail to open the battery compartment on the right side of the camera.

Step 2



- Push the blue trapdoor to the left to release the battery, and remove the battery.
-  There is no battery shown in this photo.

Step 3 — Front Case



- Use a Phillips #00 screwdriver to remove the 4 mm screw inside the battery compartment.

Step 4



- Remove the 4 mm Phillips #00 screw hiding in the external flash port.

Step 5



- Remove the four 5 mm Phillips #00 screws from the lens assembly.

Step 6



- Remove the metal lens mount by hand or with tweezers.
- ⚠ Be careful not to touch the sensor in the center of the lens assembly.

Step 7



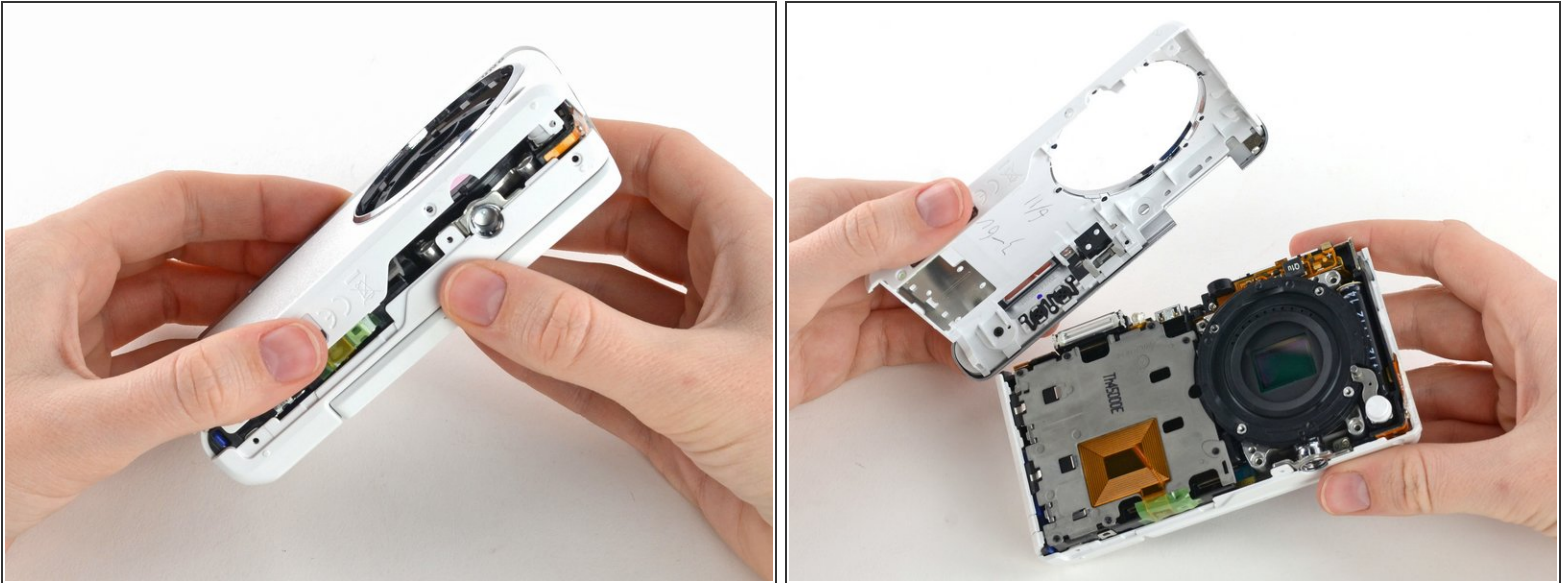
- Use tweezers to remove the inner metal ring.

Step 8



- Use a Phillips #00 screwdriver to remove the three 4 mm screws from the bottom of the case.

Step 9



- Use your hands to slowly pull the front casing away from the camera.
- ⓘ The case is attached with multiple clips that may make a cracking noise as you pull it away from the camera.

To reassemble your device, follow these instructions in reverse order.