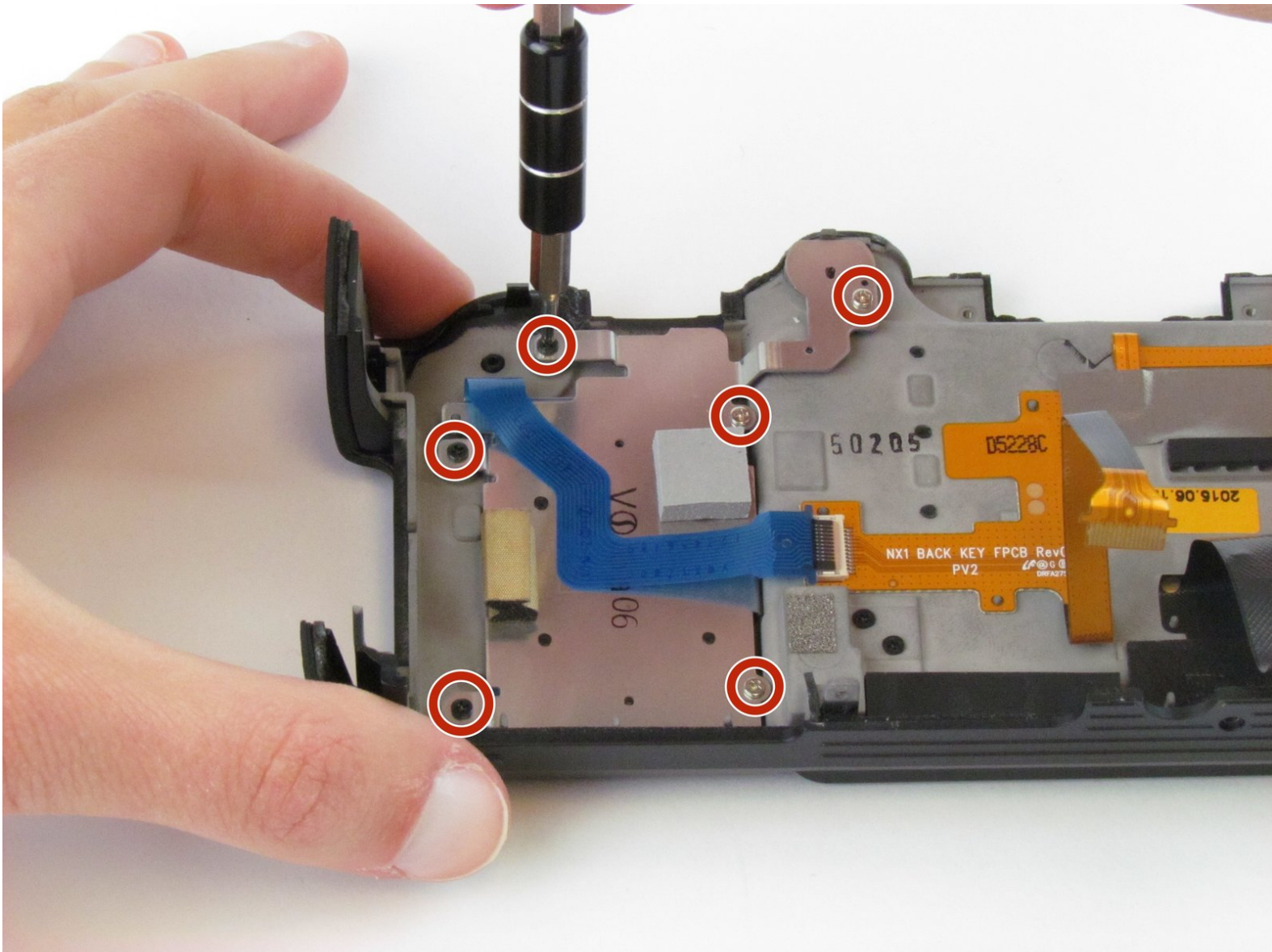




# Samsung NX1 Navigation Buttons Replacement

Replace the navigation buttons on the screen side of the camera.

Written By: Hannah Patrick



# INTRODUCTION

Navigation buttons are used to operate the camera and its various settings and features.



## TOOLS:

- [Phillips #00 Screwdriver](#) (1)
  - [Tweezers](#) (1)
  - [Spudger](#) (1)
-

## Step 1 — Viewfinder Focus Dial



- Push the rubber viewfinder grip upward.

## Step 2



- Use the Phillips #00 screwdriver to remove one 6.4 mm screw in the center of the dial.
- Remove the dial by lifting upward with your fingers.

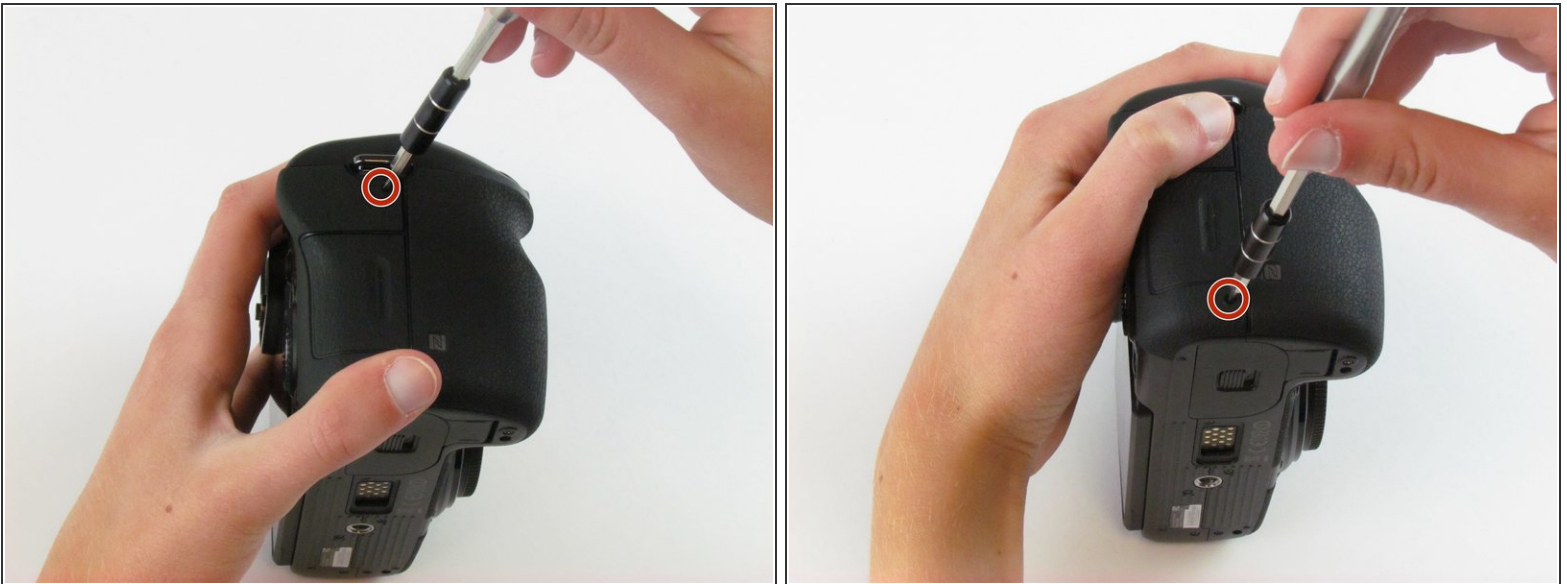


### Step 3 — Back Cover



- Use the Phillips #00 screwdriver to remove the four 5.5 mm screws surrounding the viewfinder.
- Use your fingers to lift the plastic viewfinder cover upward.

### Step 4



- Use the Phillips #00 screwdriver to remove the two 5.5 mm screws from the right side of the camera above the SD card port.

## Step 5



- Use the Phillips #00 screwdriver to remove one 5.5 mm screw on the left, above the HDMI port.

## Step 6



- Use the Phillips #00 screwdriver to remove the five 5.5 mm screws from the bottom, near the battery compartment.
- Use the Phillips #00 screwdriver to remove one 3.8 mm screw from the bottom of the hand grip, below the battery compartment.

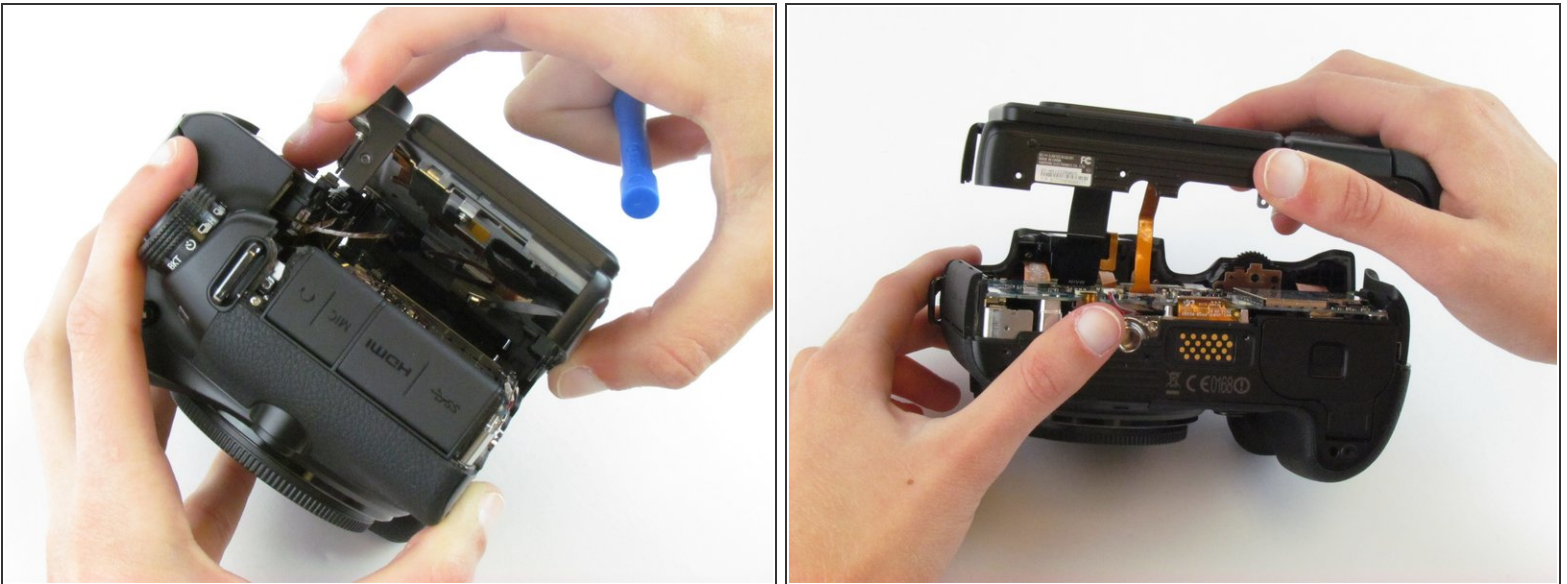
## Step 7



- Use a plastic opening tool to separate the back cover from the front cover.

**i** Pry the back cover in this order: bottom, right side, left side.

## Step 8

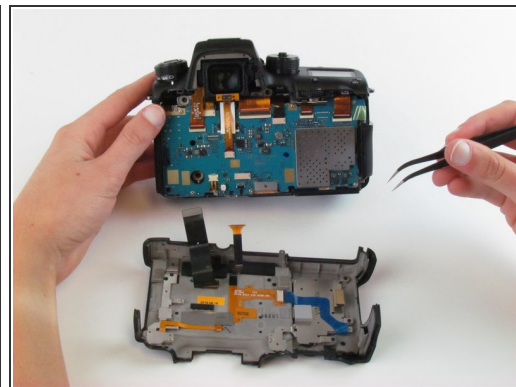
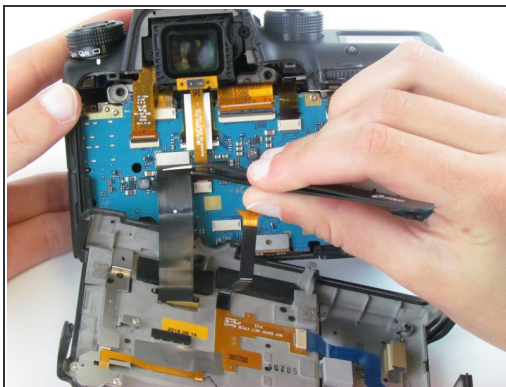
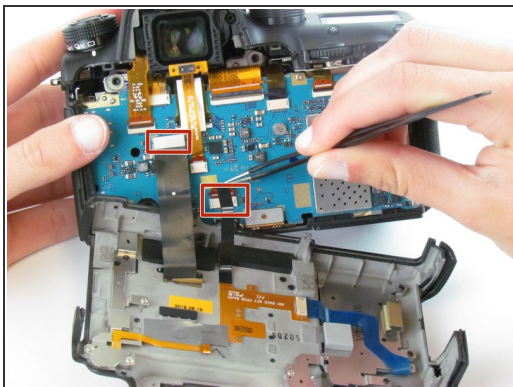


- Use your fingers to pull the back cover away from the front cover.

**i** Do not completely separate the back cover from the front cover as two cables hold these components together.

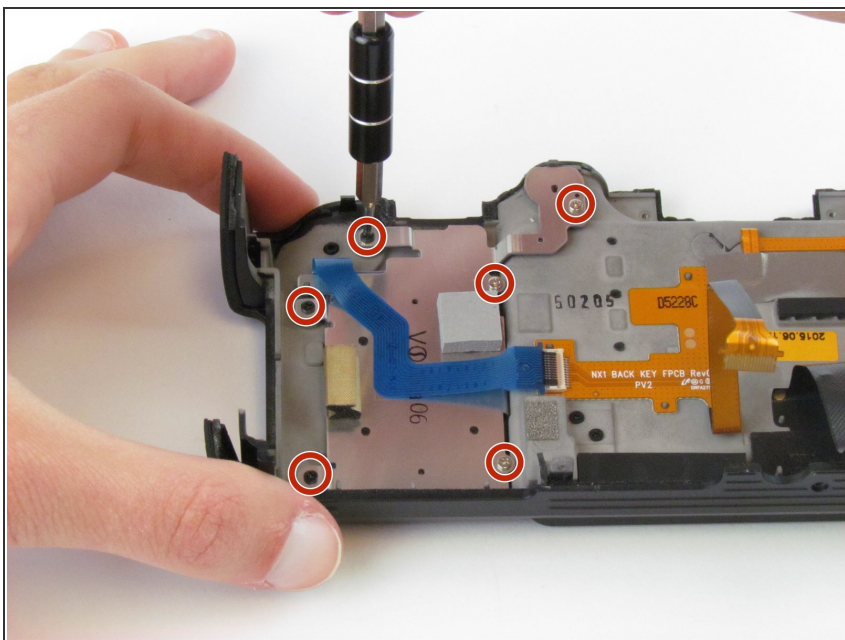


## Step 9



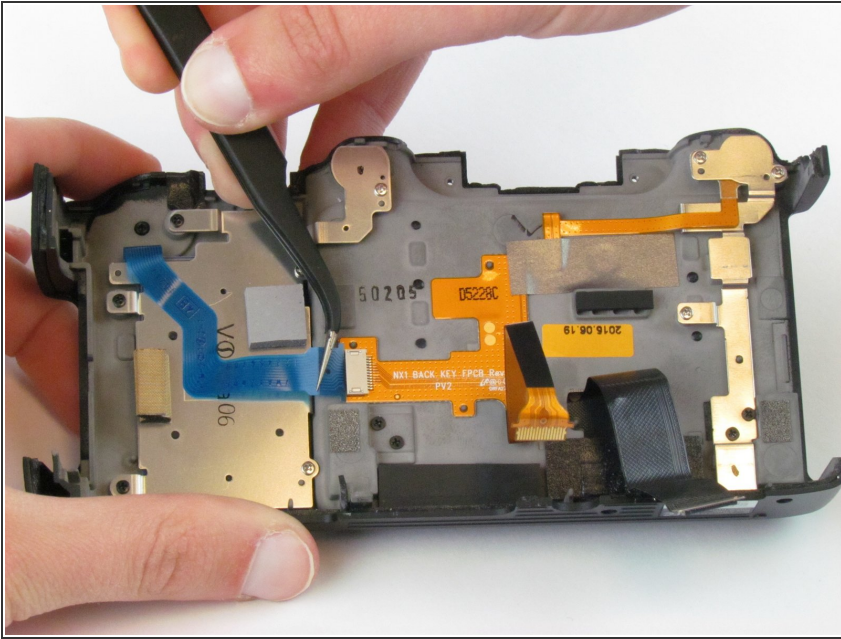
- Use tweezers to pull the two ribbon cables horizontally out of their clips.

## Step 10 — Navigation Buttons



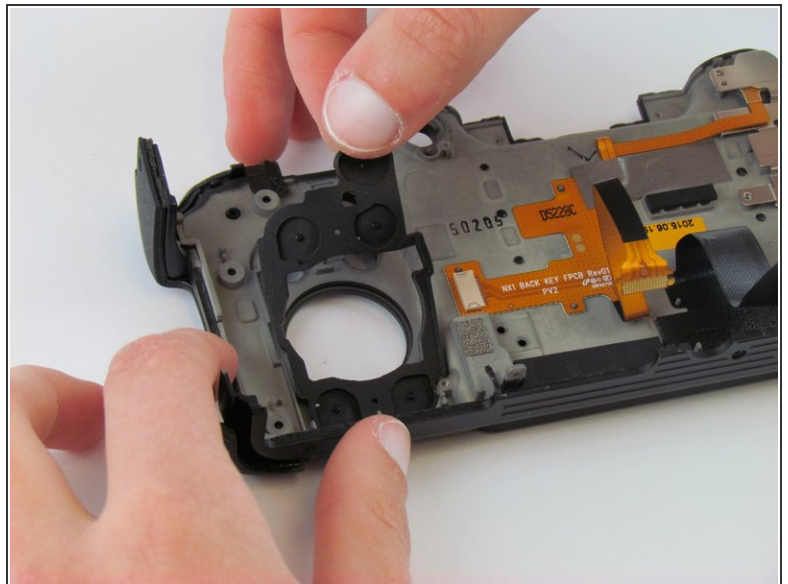
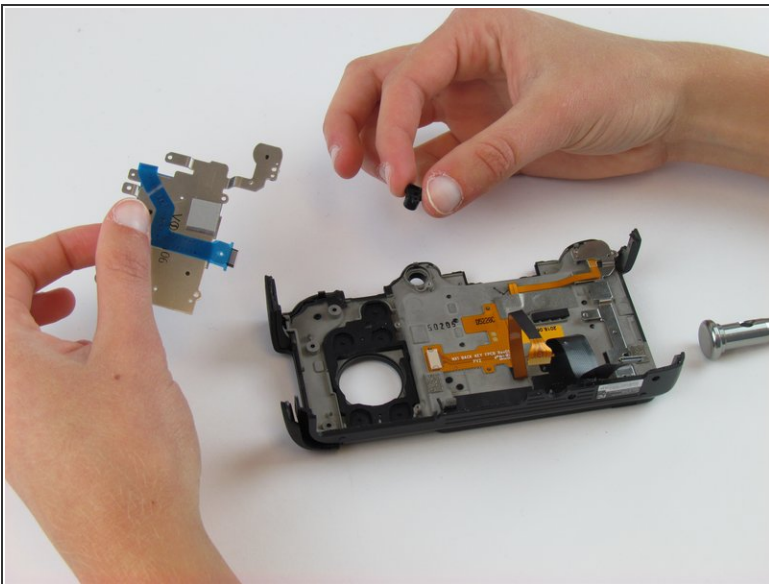
- Use the Phillips #00 screwdriver to remove the six screws (three silver 3.5 mm screws and three black 4.2 mm screws).

## Step 11



- Use the tweezers to pull the blue ribbon cable horizontally out of its clip.

## Step 12



- Use your fingers to remove the metal piece with the blue ribbon cable and the rubber buttons lying underneath.

To reassemble your device, follow these instructions in reverse order.

This document was generated on 2019-09-22 02:50:51 AM (MST).



