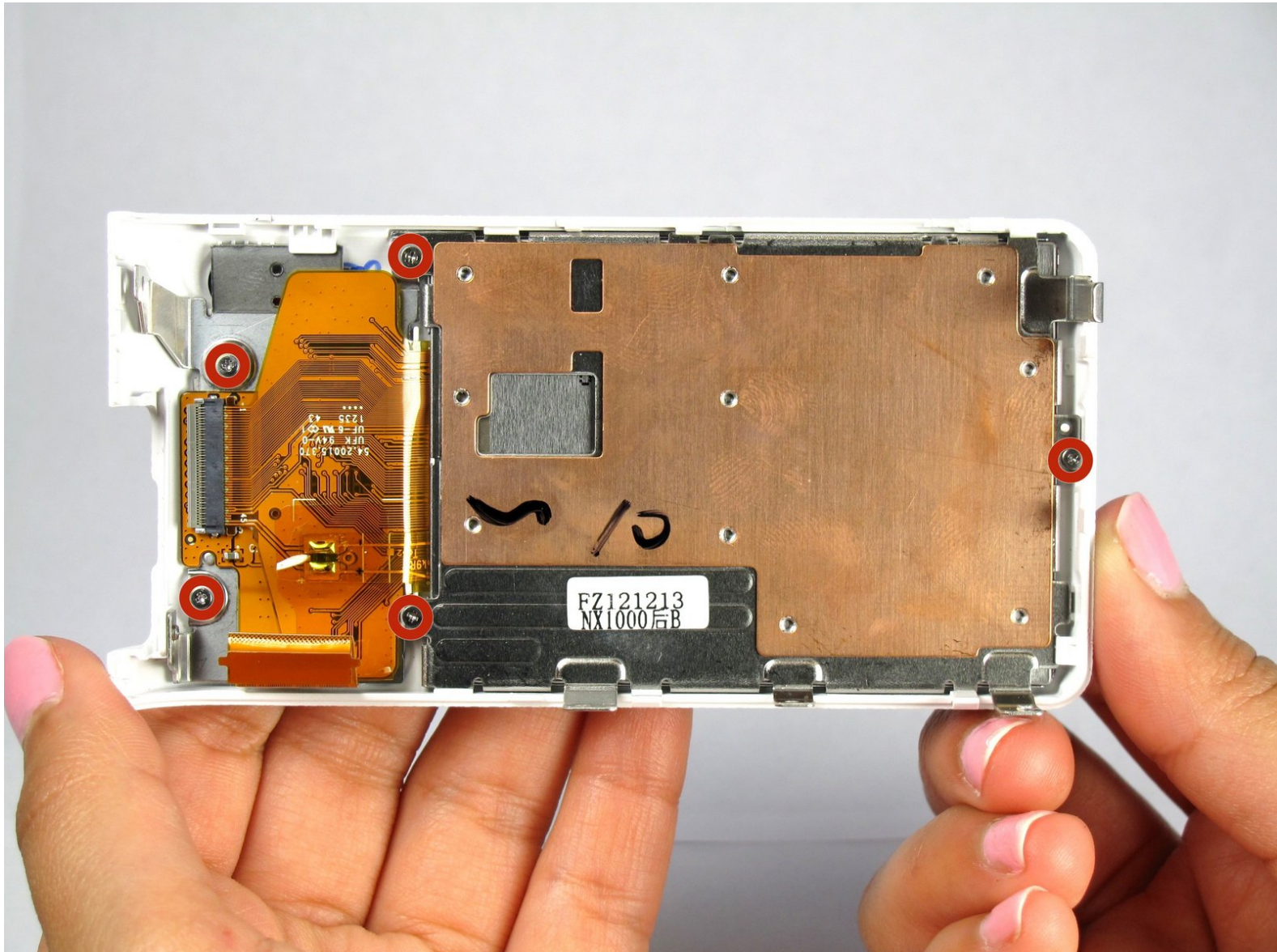




Samsung NX1000 Back Panel Components Replacement

Prerequisite only (additional backpanel removal steps)

Written By: Yesenia



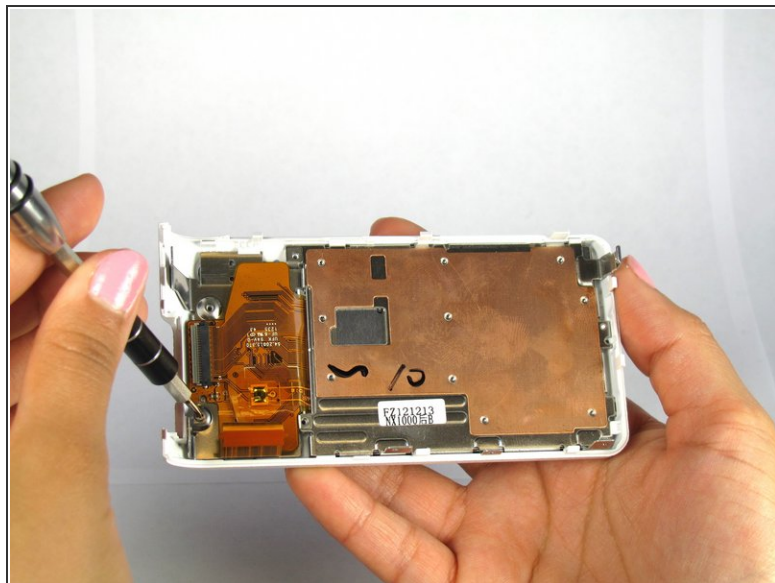
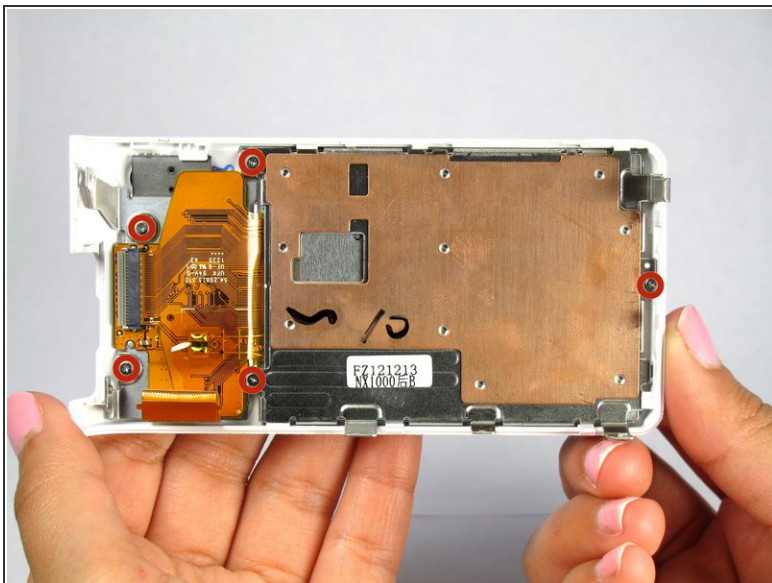
INTRODUCTION

If your backpanel is cracked or you wish to change the color with one you found online, here is the guide you are looking for! Be sure to turn off the camera and remove the battery before you begin the replacement.

TOOLS:

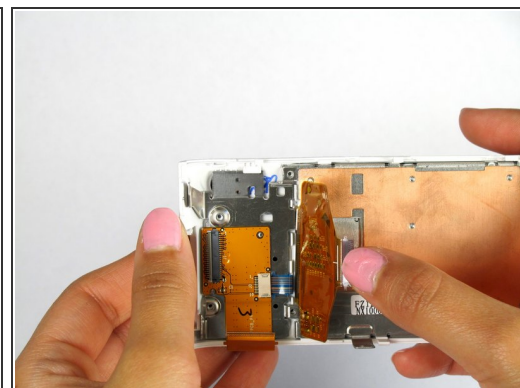
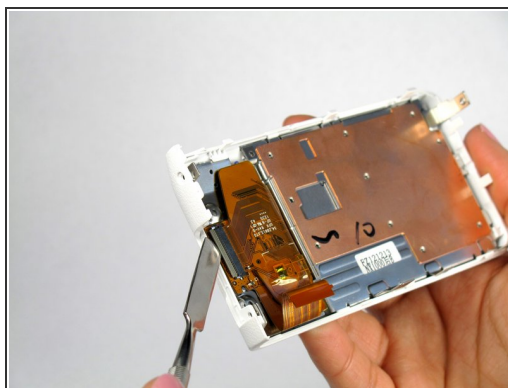
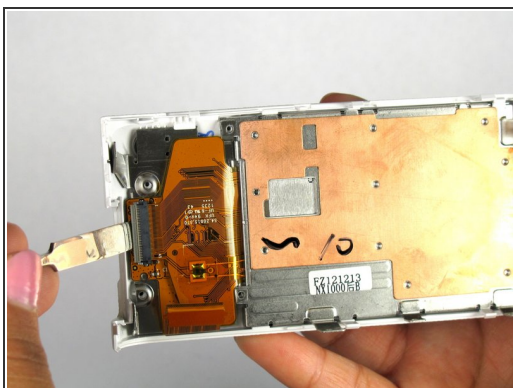
- [Metal Spudger Set](#) (1)
 - [iFixit Opening Tools](#) (1)
 - [Phillips #000 Screwdriver](#) (1)
-

Step 1 — Back Panel Components



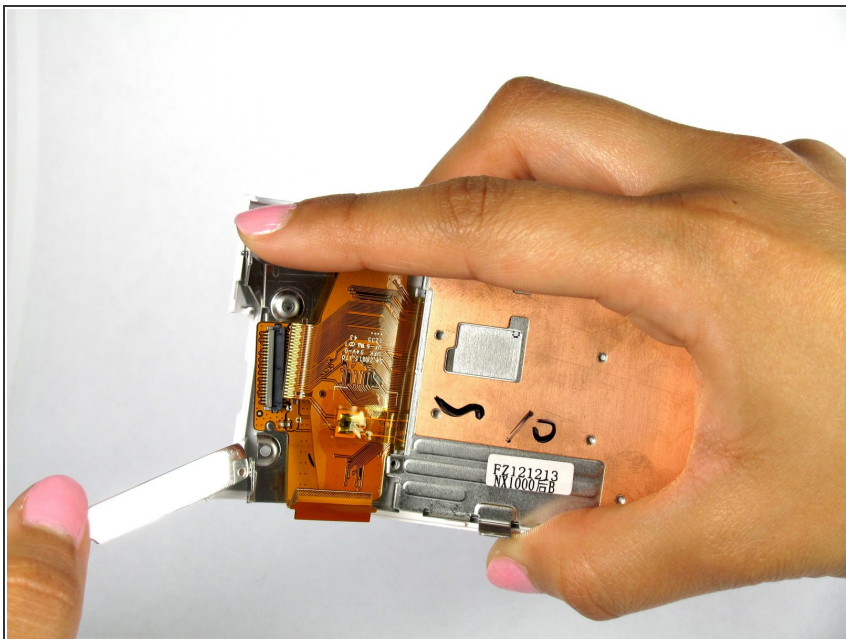
- Remove all five 3mm Philips #000 screws from the inside of the back panel using the Philips #000 Screwdriver.

Step 2



- Lift up the grey tab on the ZIF connector with the spudger to remove the ribbon.
- Using both thumbs push the ribbon out of the ZIF connection.

Step 3



- Use the metal spudger to pick the bottom of the plastic piece while simultaneously using your index finger to push down on the larger metal slab. This will cause the metal plate with the large ribbon to slide down and out of the plastic back panel.

⚠ Do not disconnect the blue ribbon.

To reassemble your device, follow these instructions in reverse order.