



# Samsung NX1000 Front Lens Cover Replacement

Replacement guide for the front lens.

Written By: Yesenia



---

## INTRODUCTION

If you need to replacement your front lens, here is the guide to do so. Be sure to turn off your camera and take out the battery before you being your replacement.

---

### TOOLS:

- [Metal Spudger Set](#) (1)
  - [iFixit Opening Tools](#) (1)
  - [Phillips #000 Screwdriver](#) (1)
-

## Step 1 — Front Lens Cover



- Unscrew the four 5.5 mm #000 Philips screws that are on the metal ring with a Philips #000 screwdriver.

## Step 2



- Remove the metal ring using the plastic opening tool.

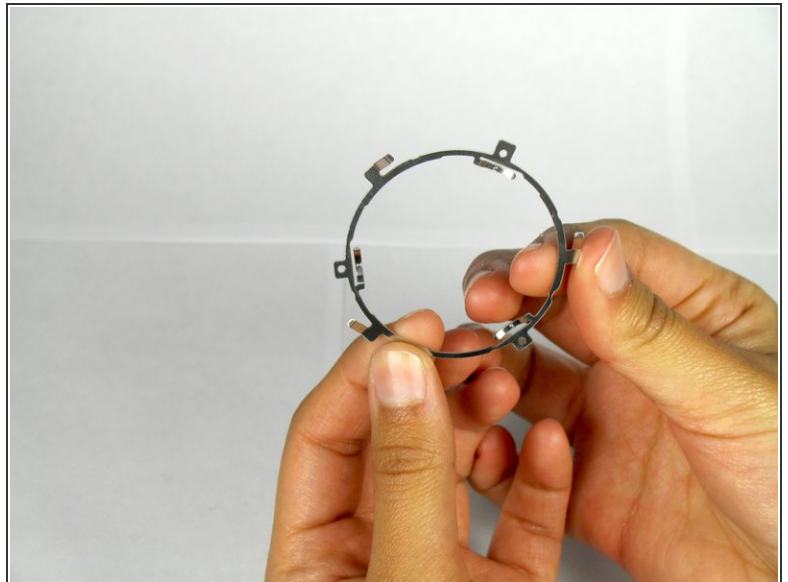


### Step 3



- Remove the black plastic ring using the plastic opening tool.

### Step 4



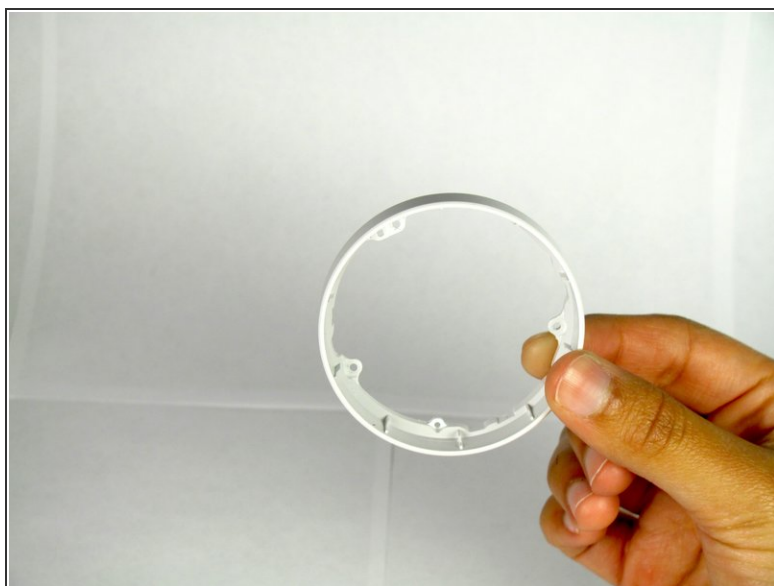
- Remove the thin metal ring.

## Step 5



- Remove the three 4.5 mm Phillips #000 head screws located inside the cover with a Phillips #000 screwdriver.

## Step 6



⚠ There are a few loose metal parts and springs. Be careful not to shake the device.

- Remove the white plastic ring.

To reassemble your device, follow these instructions in reverse order.