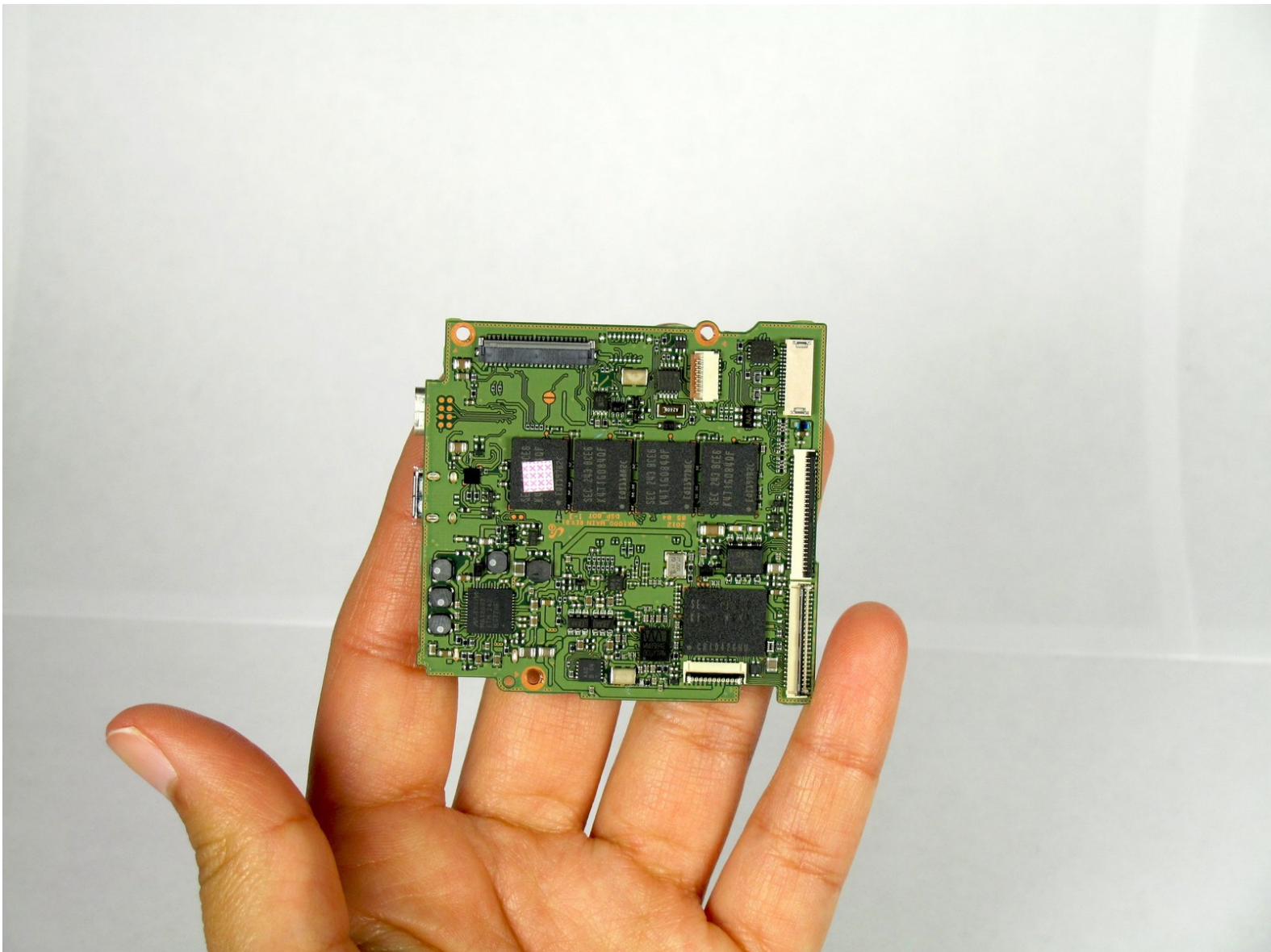




Samsung NX1000 Motherboard Replacement

This guide will show you how to replace the motherboard in the camera

Written By: Yesenia



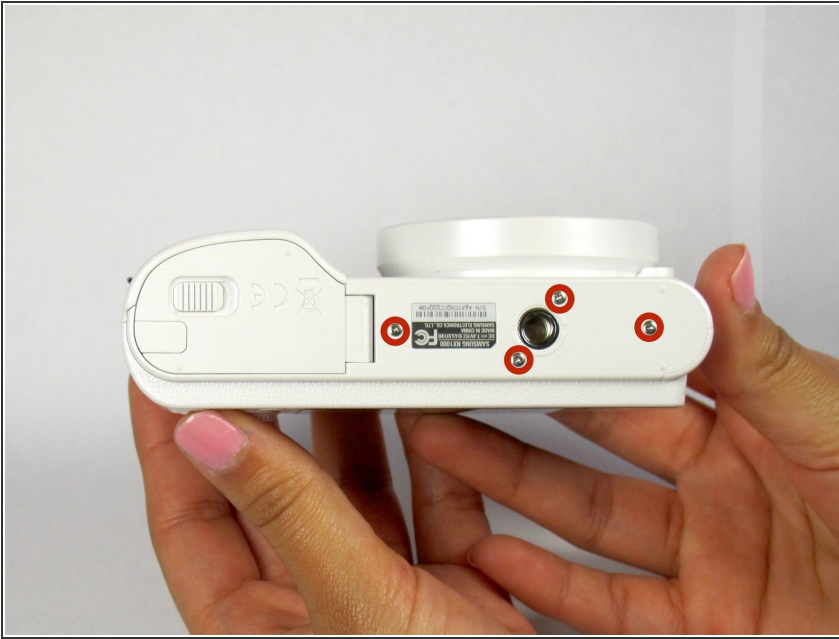
INTRODUCTION

This guide will show you how to replace the motherboard in the camera. Be sure to turn off the camera and remove the battery before you begin your replacement.

TOOLS:

- [Metal Spudger Set](#) (1)
 - [iFixit Opening Tools](#) (1)
 - [Phillips #000 Screwdriver](#) (1)
-

Step 1 — Removing the Back Panel



- Locate the bottom panel of the camera.
 - Unscrew the four 4.5mm Philips #000 (perpendicular cross) screws with the Philips #000 screwdriver.
- ⚠ Push the screwdriver firmly into the screw so that the driver will not strip the screw.

Step 2




- Unscrew the three 4.5mm #000 Philips screws on the sides of the camera using the Philips #000 screwdriver.

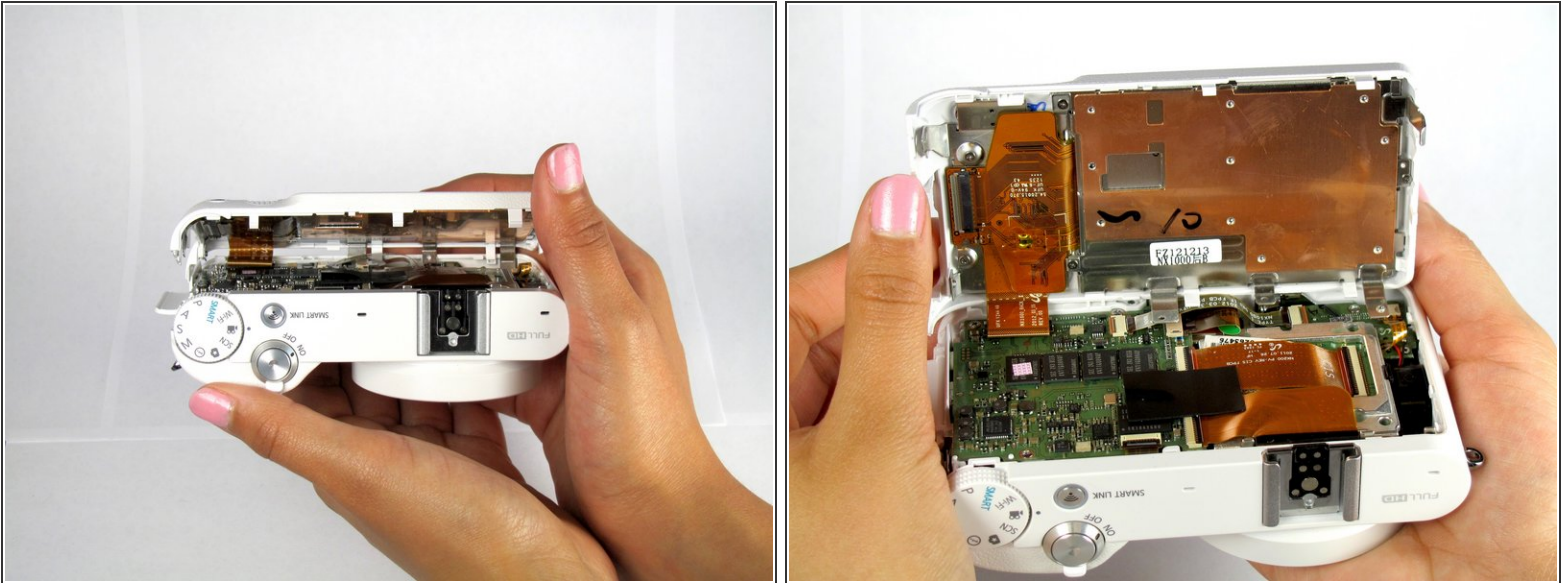
Step 3



- Pry open the back panel using the metal spudger.

 Do not completely separate the back panel from the camera. There is a ribbon on bottom left back corner underneath the buttons. The ribbon will hold the back panel to the camera. Do not jam the tool in this part or the ribbon will rip.

Step 4



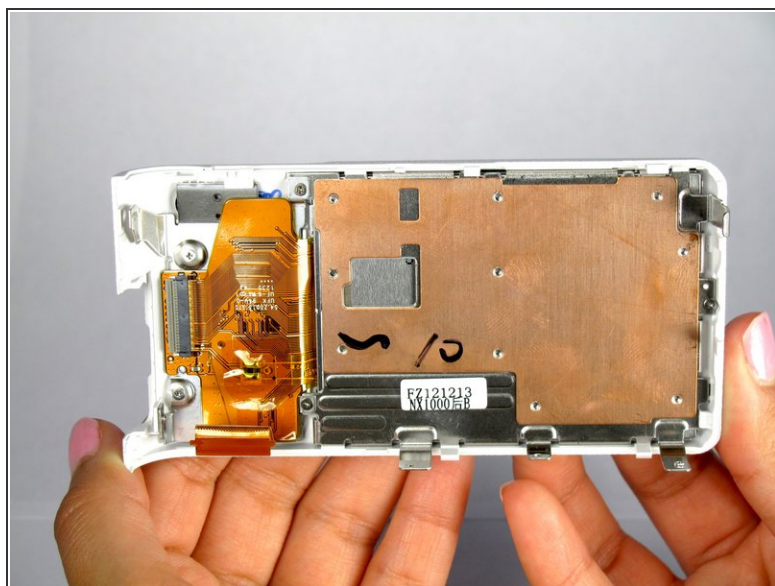
- Open the two halves of the camera, taking care not to disturb the ribbon cable.
- ⚠ Do not completely separate the halves. The ribbon cable needs to be disconnected from the ZIF connection carefully as shown in the next step

Step 5



- Remove the ribbon by lifting the grey tab on the ZIF connector with the metal spudger.
- Push the ribbon out of its socket with the plastic opening tool.

Step 6



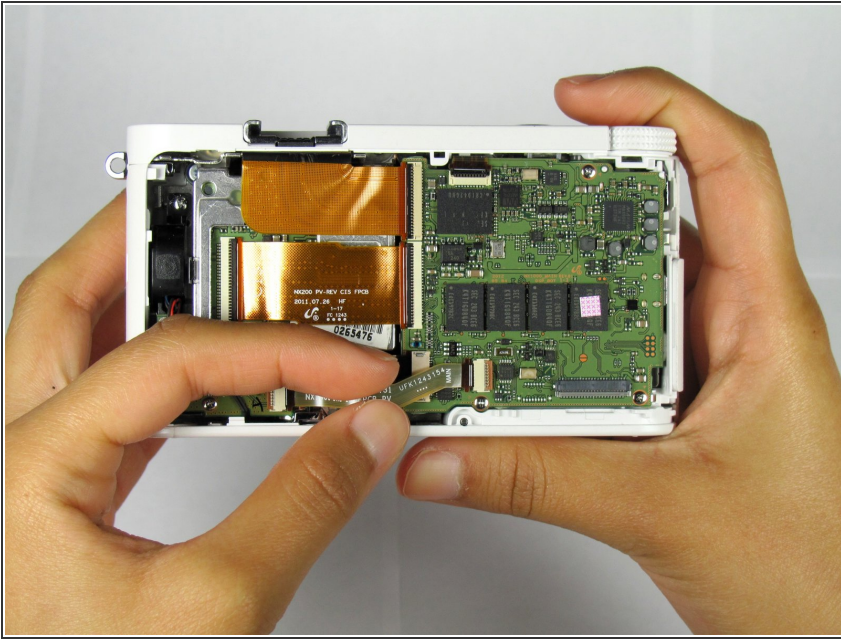
- Completely separate the back panel from the camera.

Step 7 — Motherboard



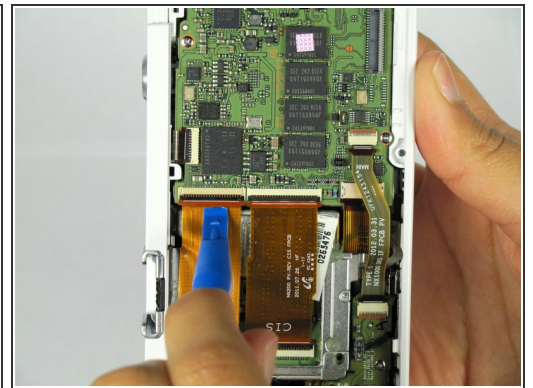
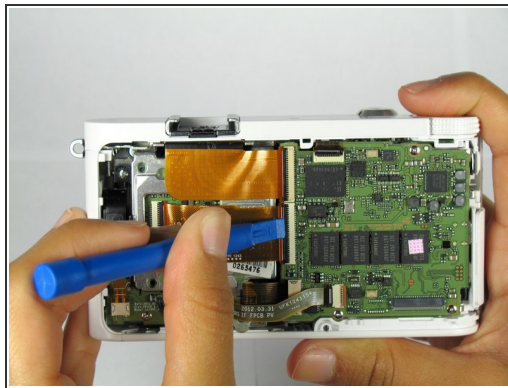
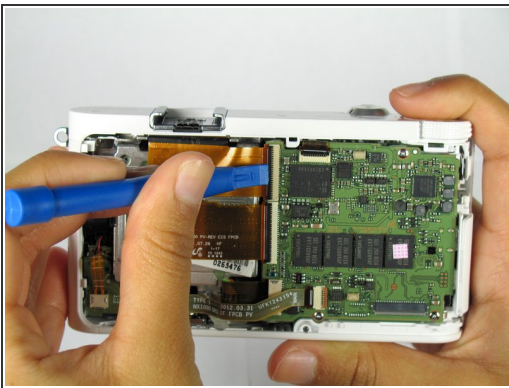
- Remove the black rubber tape with the plastic opening tool and slowly peel it off.

Step 8



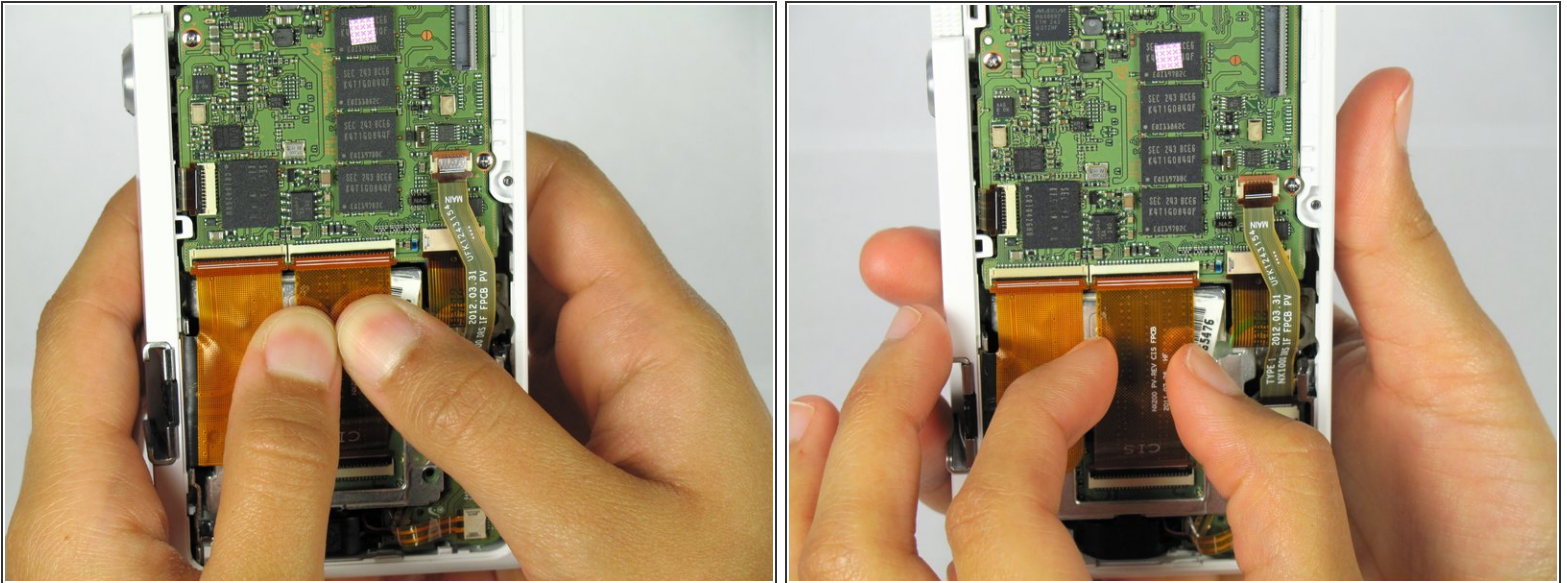
- Disconnect the bottom ribbon by grasping the ribbon and wiggling it out gently from the connection.

Step 9



- Open the ZIF connector on both of the larger ribbons by lifting the black latch with the plastic opening tool.

Step 10



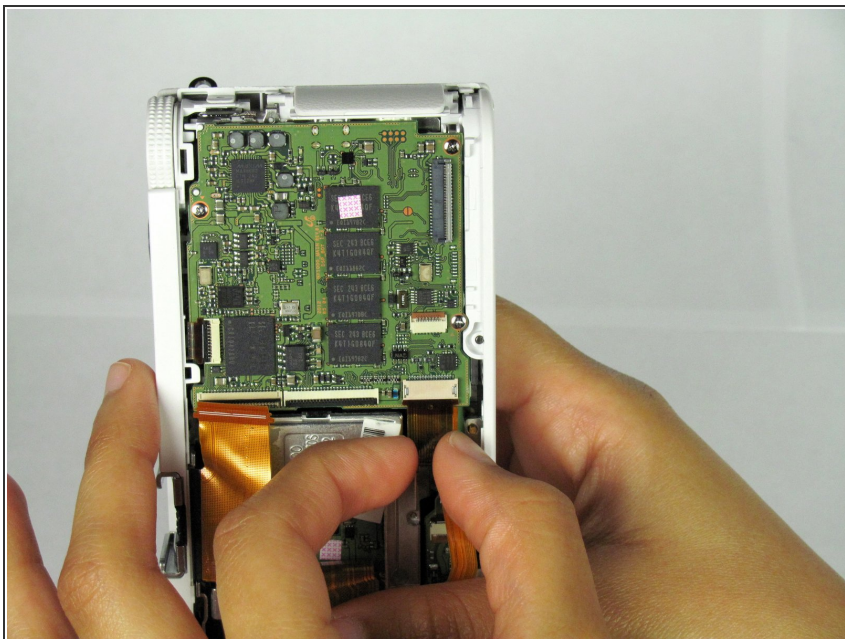
- Disconnect the bottom of the larger ribbons by gently wiggling it away from the ZIF connector.

Step 11



- Disconnect the top of the larger ribbons by wiggling it out of the ZIF connector / prying the ribbon out with the plastic opening tool.
- ⚠ Make sure to remove this ribbon carefully. The ribbon is connected at the top right corner and can tear if not removed carefully.

Step 12



- Hold back the ribbons to access the second smaller one at the bottom of the camera.
- Slowly wiggle the ribbon out of the ZIF connection.

Step 13



- Unscrew the three 4.5mm Philips #000 screws with the Philips #000 screwdriver.

Step 14



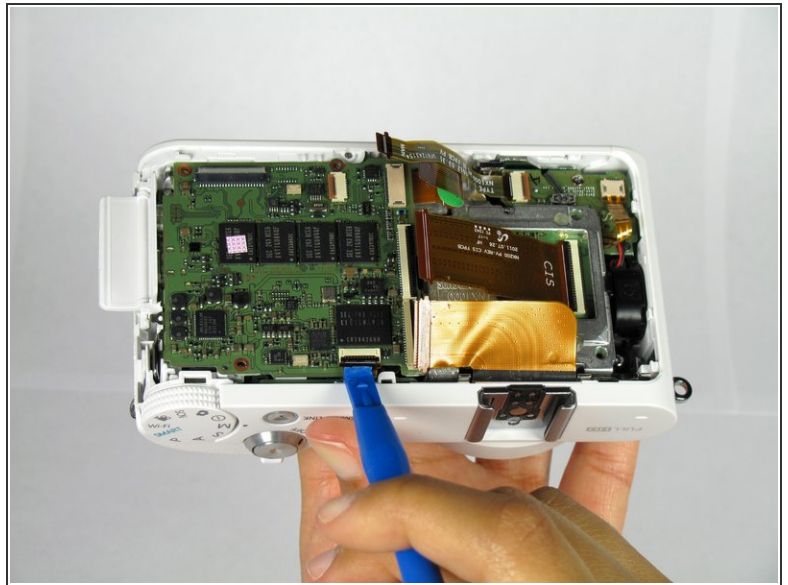
- Using the plastic opening tool lift the motherboard up starting from the bottom left side.

Step 15



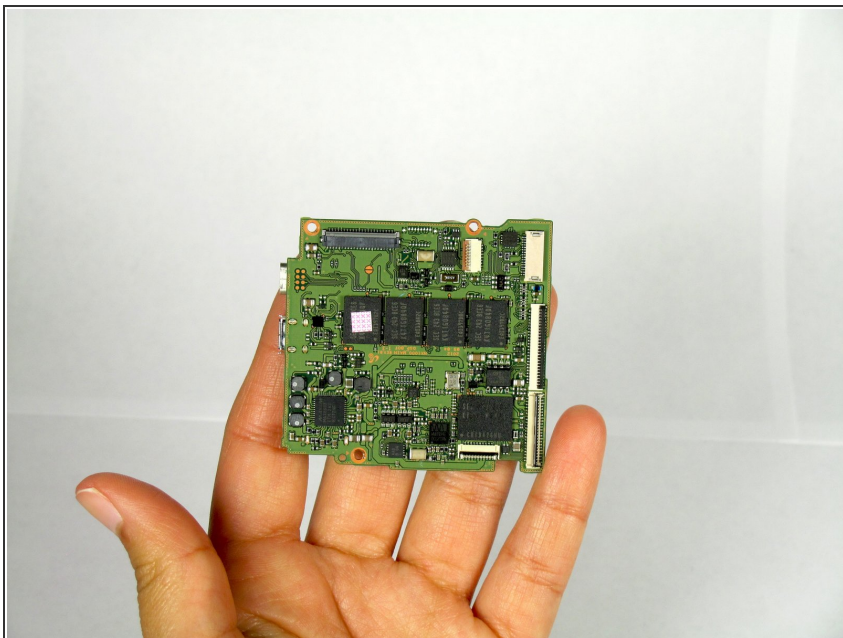
- Pull out the board to the left, freeing the external ports from the plastic case.
- ⓘ Be careful when lifting the motherboard. There is one more ribbon cable to free before fully removing the board.

Step 16



- Carefully place the motherboard back down to remove the last ribbon. Lift the black latch up from the ZIF connector of the last ribbon with the plastic opening tool.

Step 17



- Slowly and carefully wiggle the ribbon out of the ZIF connection (Do this by holding the back of the ribbon).

To reassemble your device, follow these instructions in reverse order.