



Samsung NX2000 Motherboard Replacement

This guide will explain how to replace the camera's motherboard in the simplest way possible.

Written By: Delmis Gomez



INTRODUCTION

This guide will require an extensive amount of tools, from screwdrivers to scalpels. The camera will be taken apart piece by piece extensively so make sure there is enough room to lay out all the parts without them becoming lost.



TOOLS:

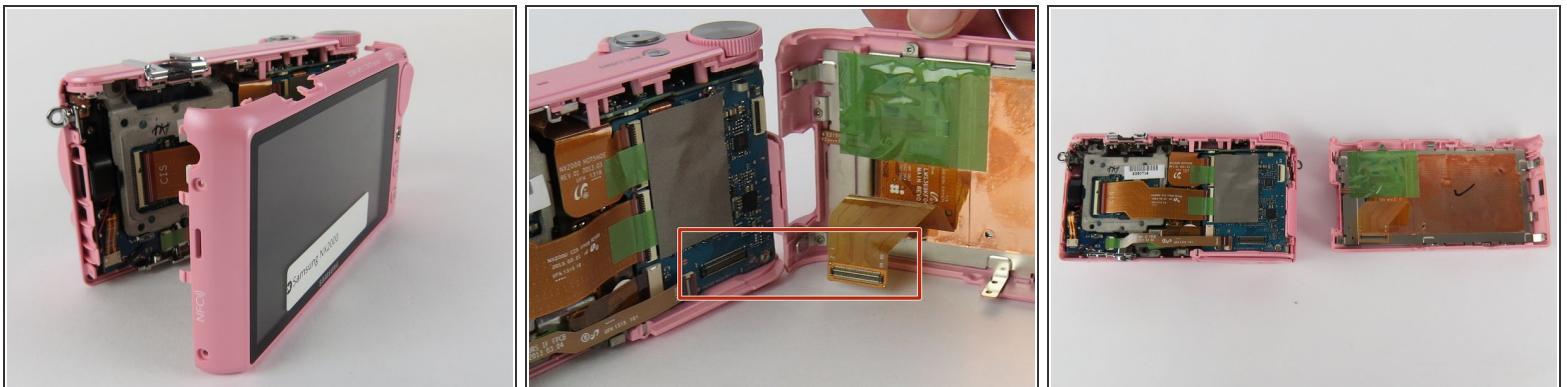
- [Tri-point Y0 Screwdriver](#) (1)
 - [iFixit Opening Tools](#) (1)
-

Step 1 — Motherboard



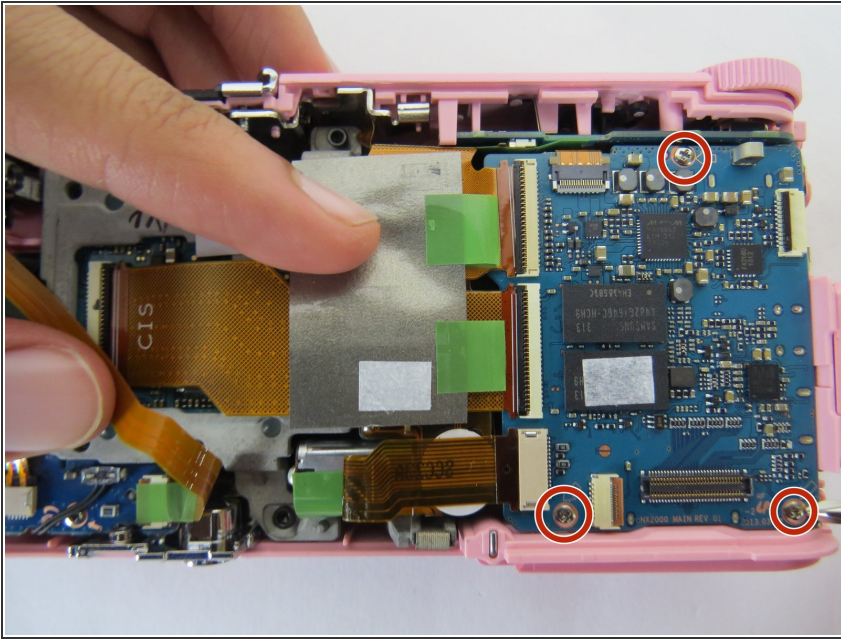
- Remove the 4mm Y0 screws found on the sides and bottom of the camera.

Step 2



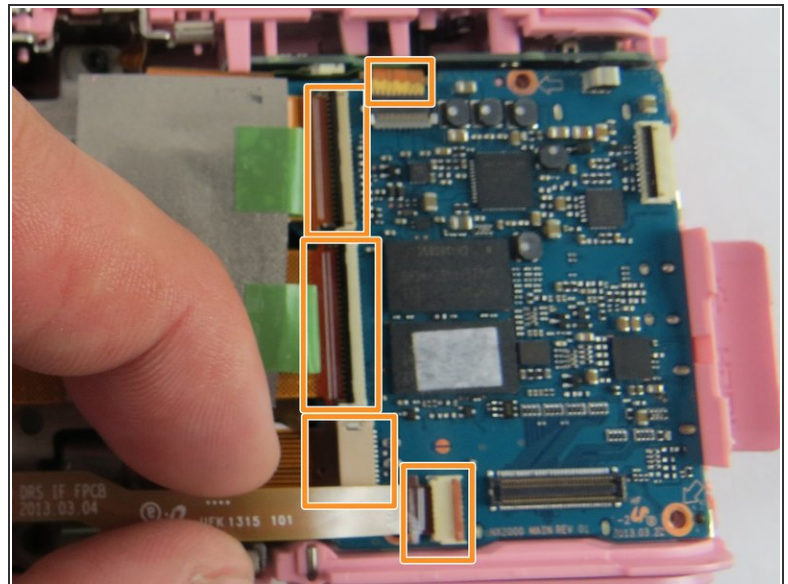
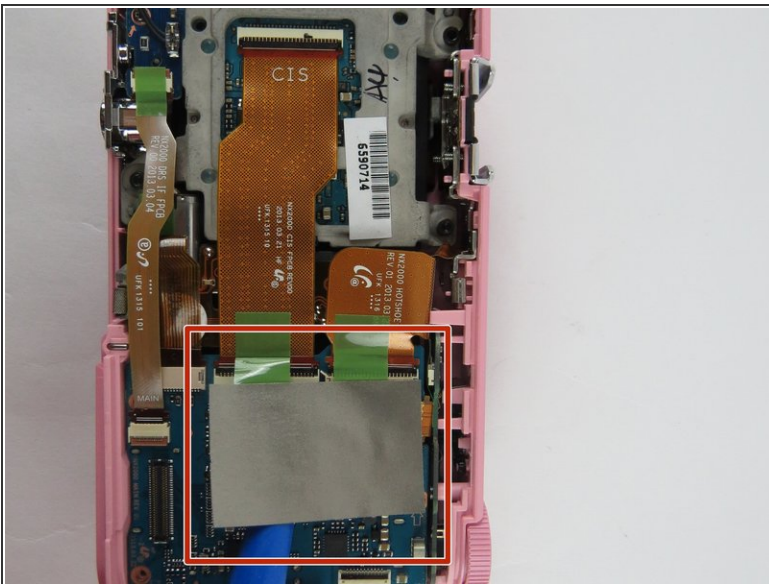
- Use a plastic opening tool to pry the back cover (with LCD screen) away from the front of the camera.
- Use a plastic opening tool to disconnect the LCD ribbon cable holding the two pieces of the camera together.

Step 3



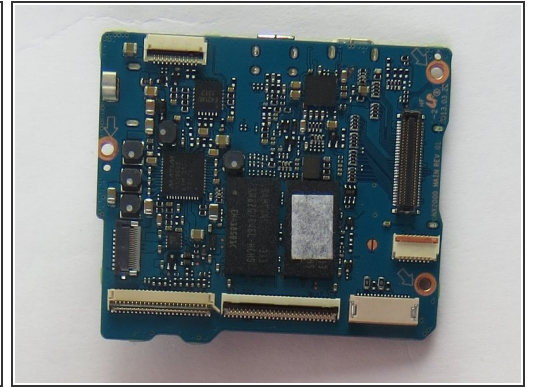
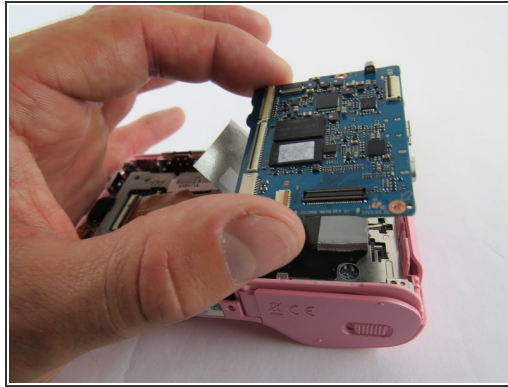
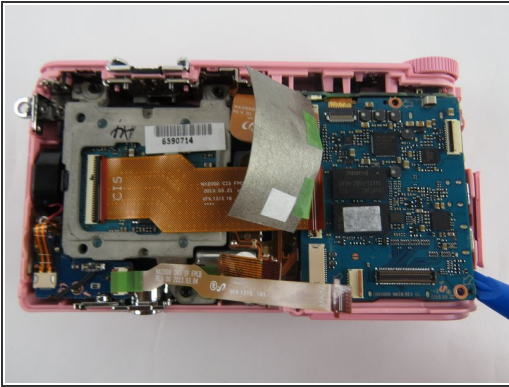
- Move towards the main frame of the camera and locate the three 1mm Y0 screws holding down the motherboard.

Step 4



- Lift the duct tape covering the ribbon cable connectors.
- Use a plastic opening tool to lift the black tab on top of the ZIF connectors.
- Pull all five ribbon cables out with tweezers.

Step 5



- Take the time to make sure everything is detached and lift the motherboard slowly using your fingers.

To reassemble your device, follow these instructions in reverse order.