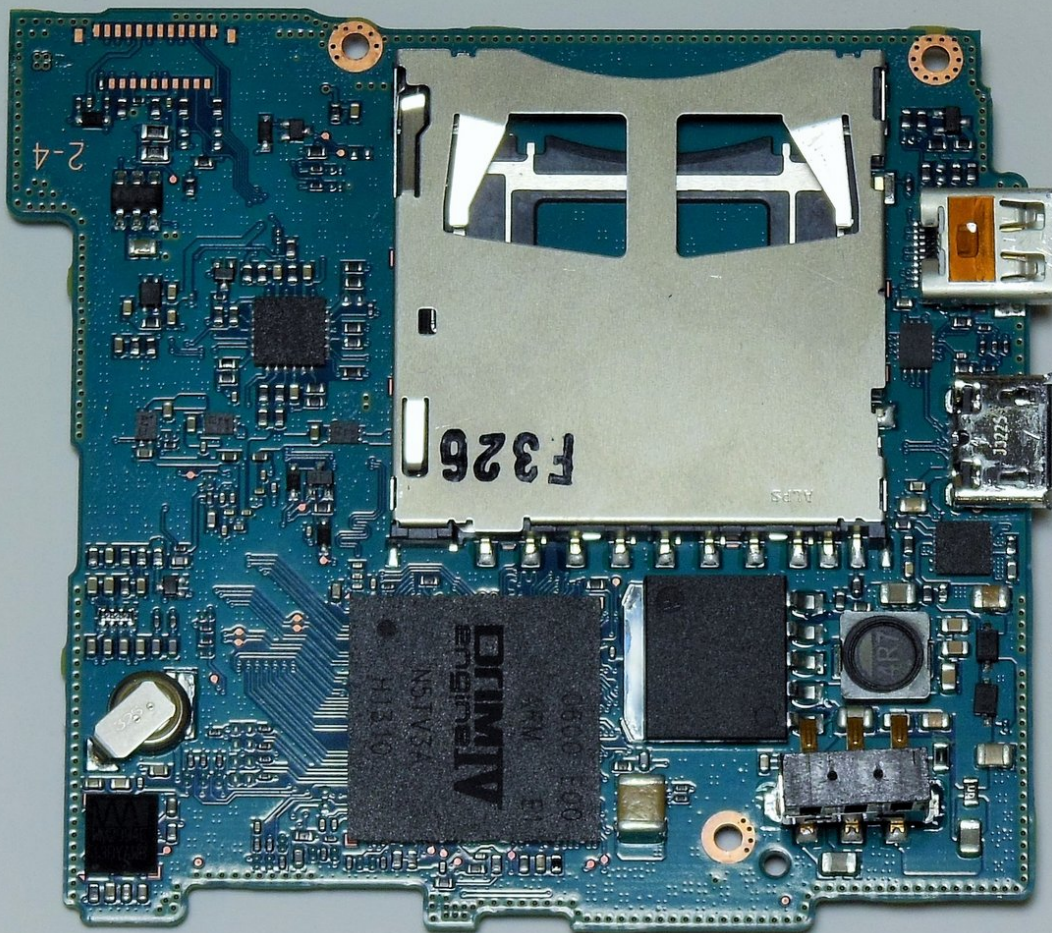




Samsung NX300 Motherboard Replacement

Replace a damaged or nonfunctional motherboard inside the camera.

Written By: Andres Perez



INTRODUCTION

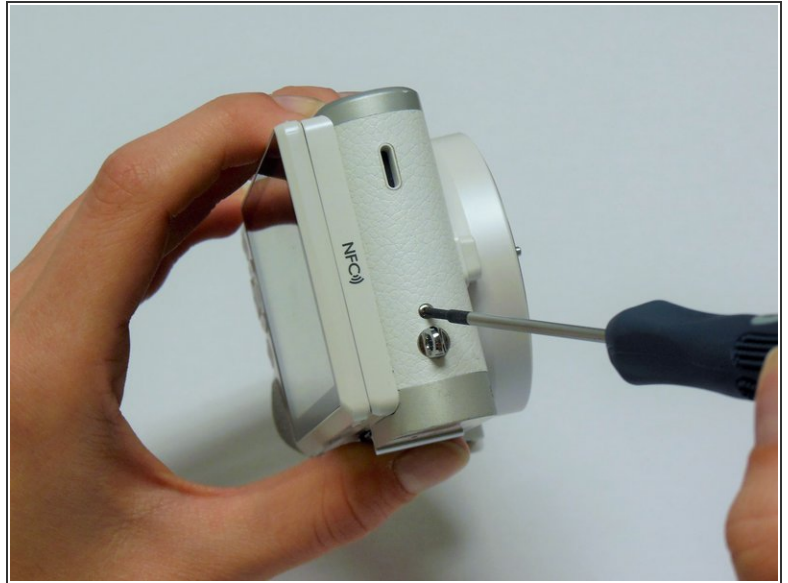
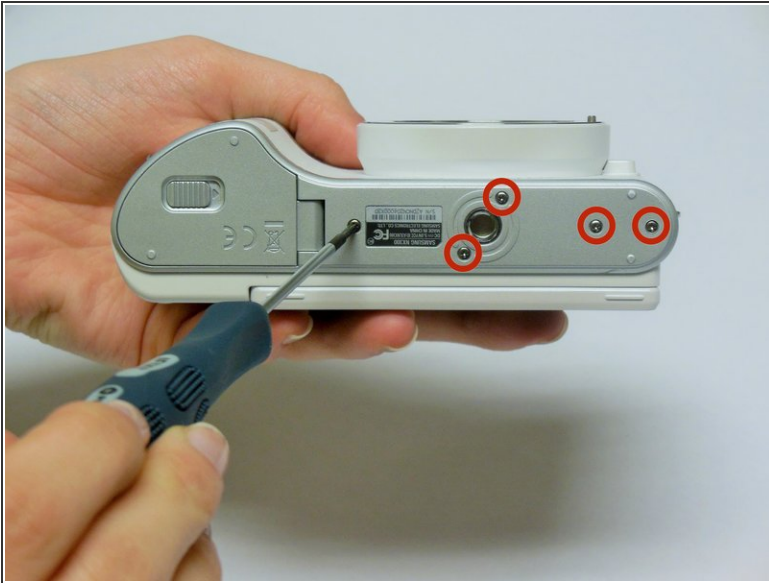
Should either the memory card reader, USB or HDMI ports become unresponsive or otherwise damaged, it will be necessary to replace the motherboard. This guide will show how to replace the camera's motherboard.



TOOLS:

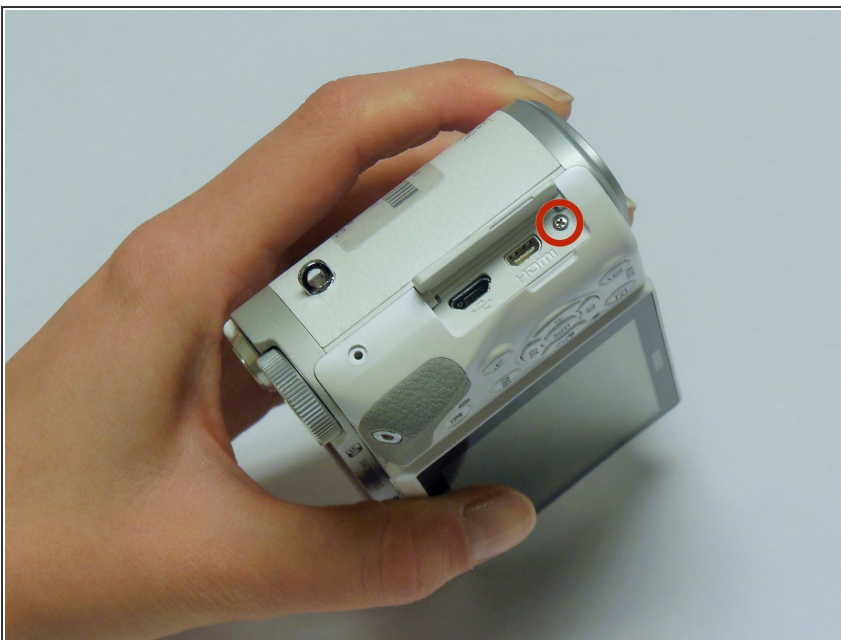
- [Phillips #00 Screwdriver](#) (1)
 - [iFixit Opening Tools](#) (1)
 - [Tweezers](#) (1)
-

Step 1 — Unscrew the Back Panel



- Using a Phillips #00 precision screwdriver, remove the seven 4mm screws (5 on the bottom of the device and 1 on each of the two sides) holding the back panel to the camera.
- In NX300M, there is an additional screw under the text AMOLED behind display which should be removed before detaching the back panel of the camera.

Step 2 — Remove the Input Port Screw



- Using a Phillips #00 precision screwdriver, remove the last 4mm screw located inside the input ports' compartment.

Step 3 — Open the Camera Casing



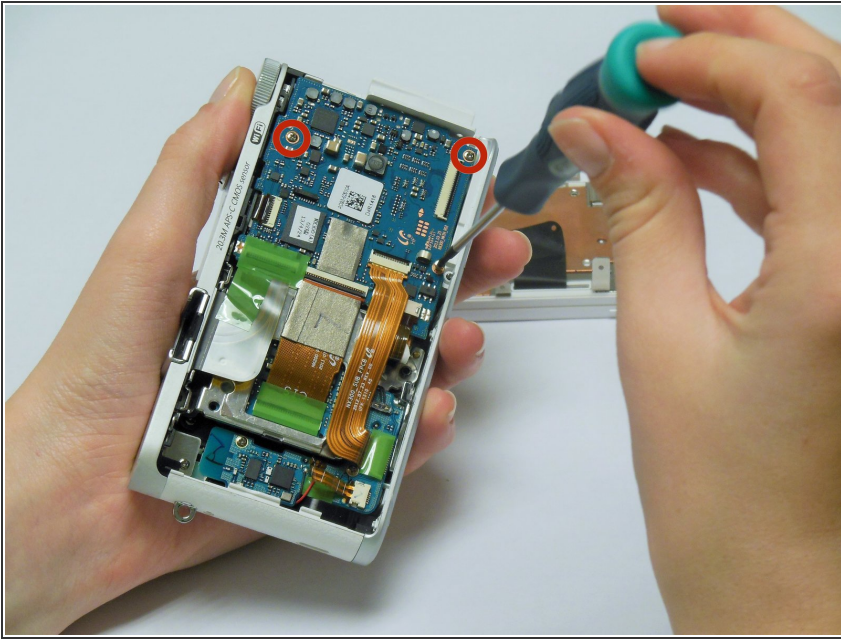
- Place a plastic opening tool into the gap between the back panel and camera body, from both the top and the bottom of camera. Carefully pry open the camera and separate the back panel.

Step 4 — Remove the Back Panel



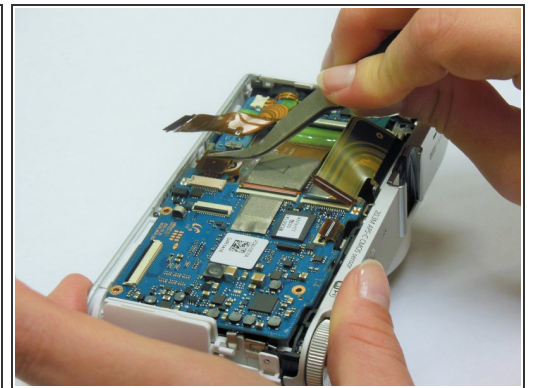
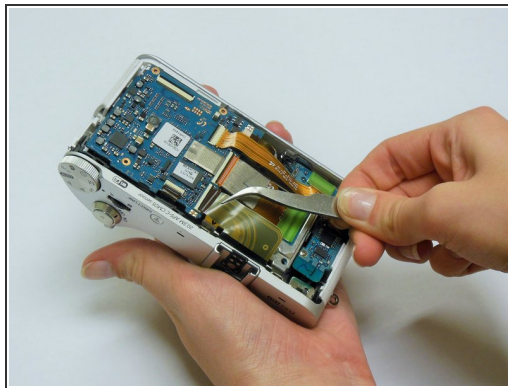
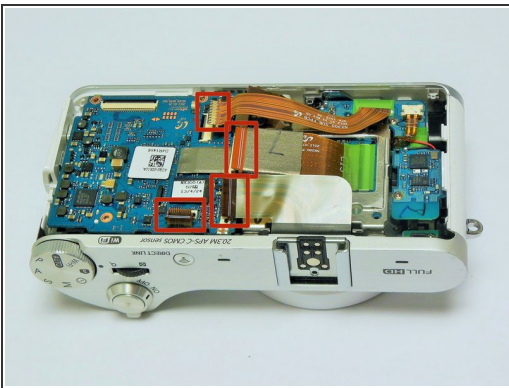
- Using tweezers or your fingers, pull the display's black ribbon from the motherboard. This frees the back panel altogether.
- ⓘ To safely remove ribbons, you would need to first unlock the holding mechanism by lifting up the black strip atop the ribbon adapter.

Step 5 — Unscrew the Motherboard



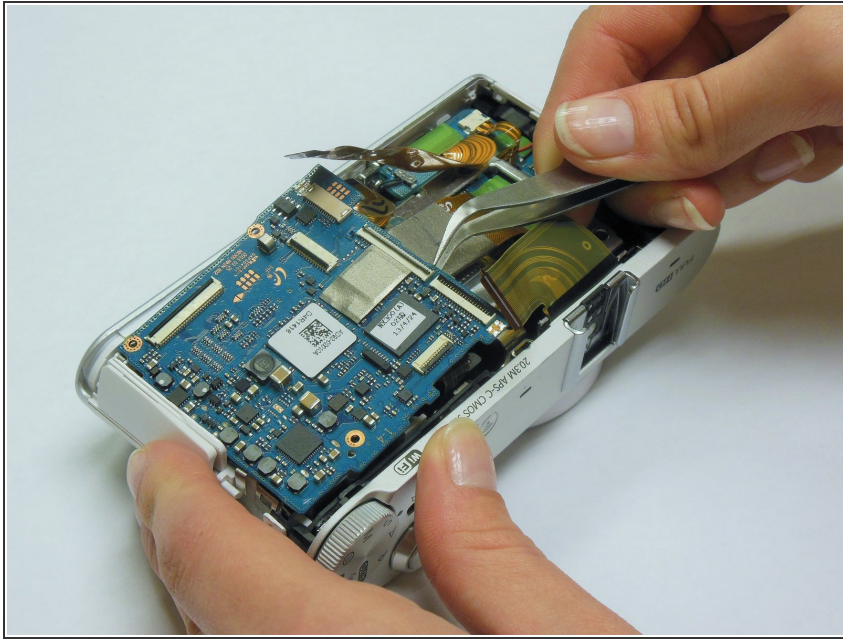
- Using a Phillips #00 precision screwdriver, remove the three 4mm screws holding the motherboard in place.

Step 6 — Detach the Ribbons



- Using tweezers or a plastic opening tool, release the locks on the ribbon receptors by flicking up the black bars on the holds. Pull the five ribbons away from the motherboard (one hidden from view). This will free the motherboard completely from the device.
- ⓘ To safely remove ribbons, you would need to first unlock the holding mechanism by lifting up the black strip atop the ribbon adapter.

Step 7



- The motherboard is now free. Pull the motherboard up and slightly away from the input compartment; it will lift out easily.

To reassemble your device, follow these instructions in reverse order.